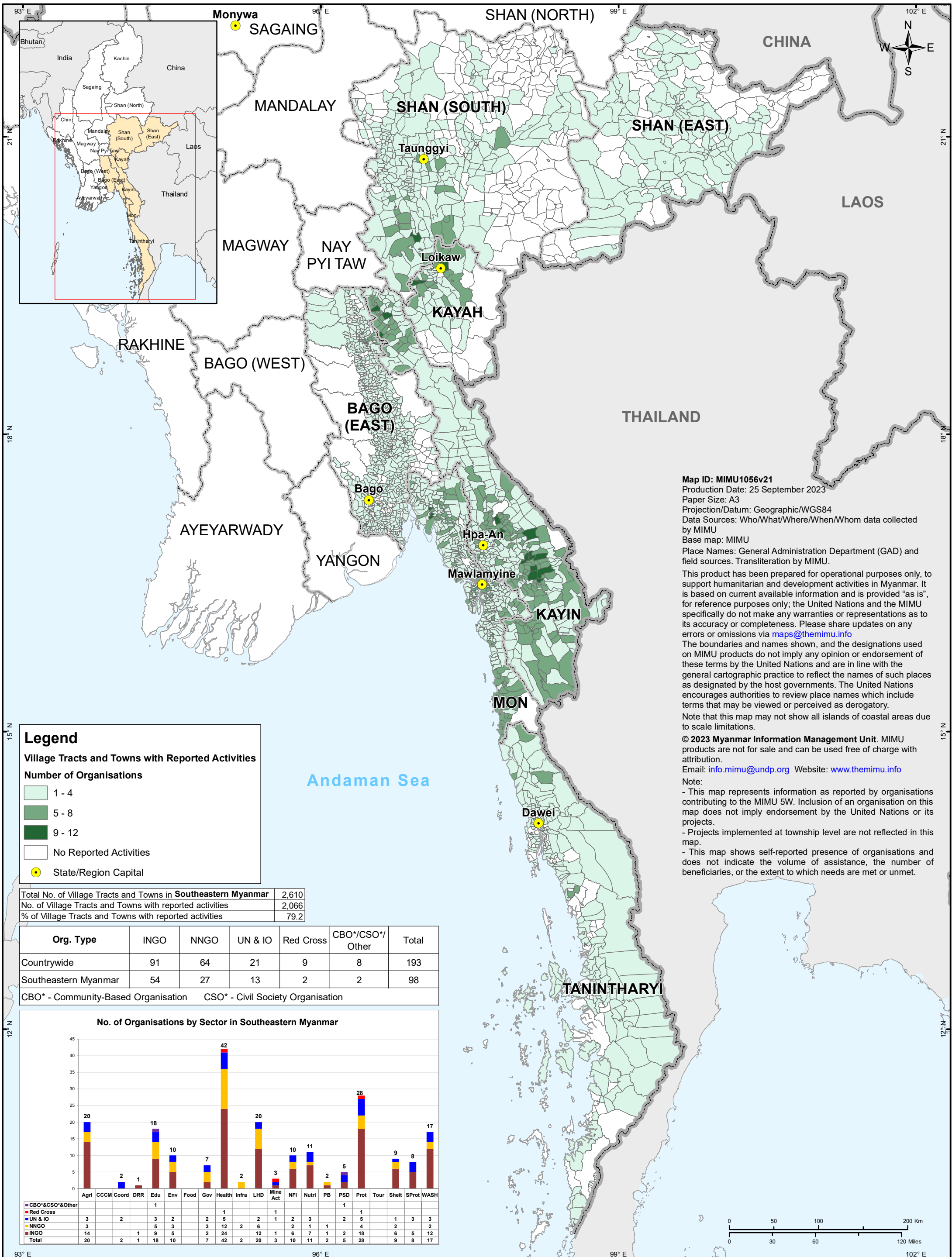




# Who What Where When for Whom - All Sectors - SOUTHEASTERN MYANMAR

Projects Under Implementation as of August 31, 2023



**Map ID: MIMU1056v21**  
 Production Date: 25 September 2023  
 Paper Size: A3  
 Projection/Datum: Geographic/WGS84  
 Data Sources: Who/What/Where/When/Whom data collected by MIMU  
 Base map: MIMU  
 Place Names: General Administration Department (GAD) and field sources. Transliteration by MIMU.

This product has been prepared for operational purposes only, to support humanitarian and development activities in Myanmar. It is based on current available information and is provided "as is", for reference purposes only; the United Nations and the MIMU specifically do not make any warranties or representations as to its accuracy or completeness. Please share updates on any errors or omissions via [maps@themimu.info](mailto:maps@themimu.info)

The boundaries and names shown, and the designations used on MIMU products do not imply any opinion or endorsement of these terms by the United Nations and are in line with the general cartographic practice to reflect the names of such places as designated by the host governments. The United Nations encourages authorities to review place names which include terms that may be viewed or perceived as derogatory.

Note that this map may not show all islands of coastal areas due to scale limitations.

© 2023 Myanmar Information Management Unit. MIMU products are not for sale and can be used free of charge with attribution.  
 Email: [info.mimu@undp.org](mailto:info.mimu@undp.org) Website: [www.themimu.info](http://www.themimu.info)

Note:  
 - This map represents information as reported by organisations contributing to the MIMU 5W. Inclusion of an organisation on this map does not imply endorsement by the United Nations or its projects.  
 - Projects implemented at township level are not reflected in this map.  
 - This map shows self-reported presence of organisations and does not indicate the volume of assistance, the number of beneficiaries, or the extent to which needs are met or unmet.

### Legend

**Village Tracts and Towns with Reported Activities**

**Number of Organisations**

- 1 - 4
- 5 - 8
- 9 - 12
- No Reported Activities
- State/Region Capital

Total No. of Village Tracts and Towns in Southeastern Myanmar	2,610
No. of Village Tracts and Towns with reported activities	2,066
% of Village Tracts and Towns with reported activities	79.2

Org. Type	INGO	NNGO	UN & IO	Red Cross	CBO*/CSO*/Other	Total
Countrywide	91	64	21	9	8	193
Southeastern Myanmar	54	27	13	2	2	98

CBO\* - Community-Based Organisation    CSO\* - Civil Society Organisation

