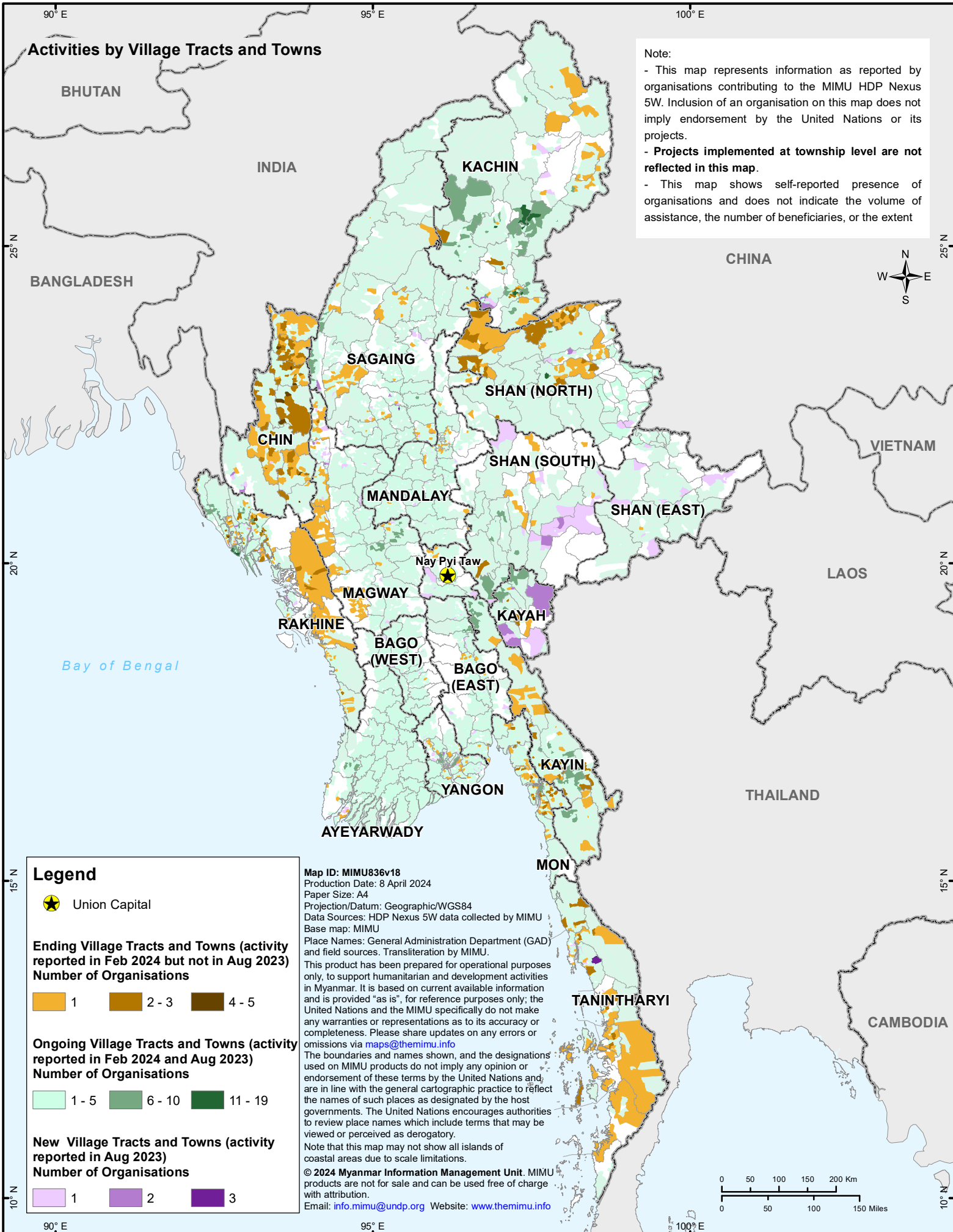


HDP Nexus 5W - All Sectors

Change from August 2023 - February 2024



Note:

- This map represents information as reported by organisations contributing to the MIMU HDP Nexus 5W. Inclusion of an organisation on this map does not imply endorsement by the United Nations or its projects.
- **Projects implemented at township level are not reflected in this map.**
- This map shows self-reported presence of organisations and does not indicate the volume of assistance, the number of beneficiaries, or the extent

Legend

- Union Capital

Ending Village Tracts and Towns (activity reported in Feb 2024 but not in Aug 2023)
Number of Organisations

- 1
- 2 - 3
- 4 - 5

Ongoing Village Tracts and Towns (activity reported in Feb 2024 and Aug 2023)
Number of Organisations

- 1 - 5
- 6 - 10
- 11 - 19

New Village Tracts and Towns (activity reported in Aug 2023)
Number of Organisations

- 1
- 2
- 3

Map ID: MIMU836v18
 Production Date: 8 April 2024
 Paper Size: A4
 Projection/Datum: Geographic/WGS84
 Data Sources: HDP Nexus 5W data collected by MIMU
 Base map: MIMU
 Place Names: General Administration Department (GAD) and field sources. Transliteration by MIMU.
 This product has been prepared for operational purposes only, to support humanitarian and development activities in Myanmar. It is based on current available information and is provided "as is", for reference purposes only; the United Nations and the MIMU specifically do not make any warranties or representations as to its accuracy or completeness. Please share updates on any errors or omissions via maps@themimu.info
 The boundaries and names shown, and the designations used on MIMU products do not imply any opinion or endorsement of these terms by the United Nations and are in line with the general cartographic practice to reflect the names of such places as designated by the host governments. The United Nations encourages authorities to review place names which include terms that may be viewed or perceived as derogatory.
 Note that this map may not show all islands of coastal areas due to scale limitations.
 © 2024 Myanmar Information Management Unit. MIMU products are not for sale and can be used free of charge with attribution.
 Email: info.mimu@undp.org Website: www.themimu.info

