

CCCM SITE MONITORING: Dar Pai Camp

Township: Sittwe (Rakhine, MYANMAR)

July-2018



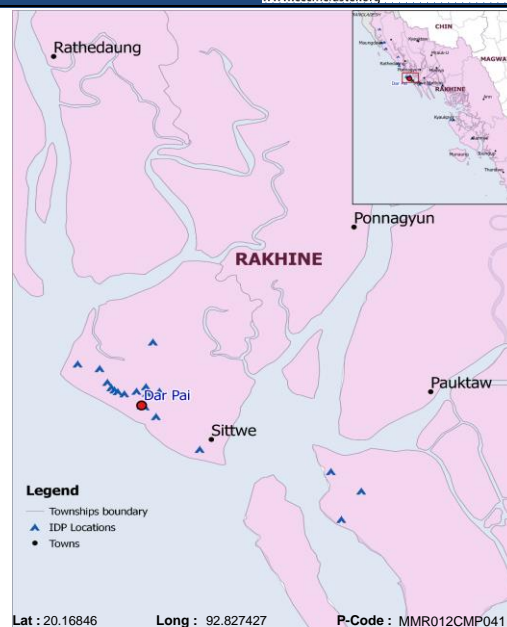
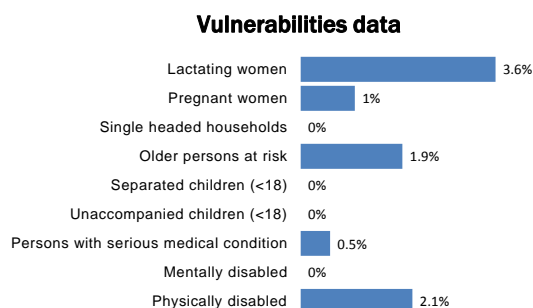
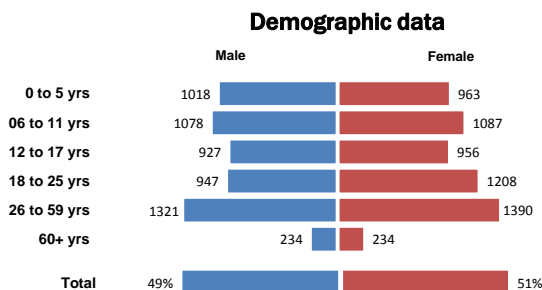
Geographic Data: Vil. Tract / Town : Bu May

Village/Ward : Dar Paing Ywar Thit

11,363 people
 1,983 households

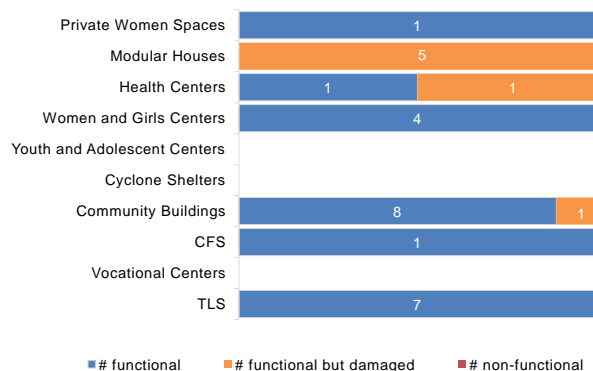
53% children
 4% elderly

9 new borns
 4 deaths

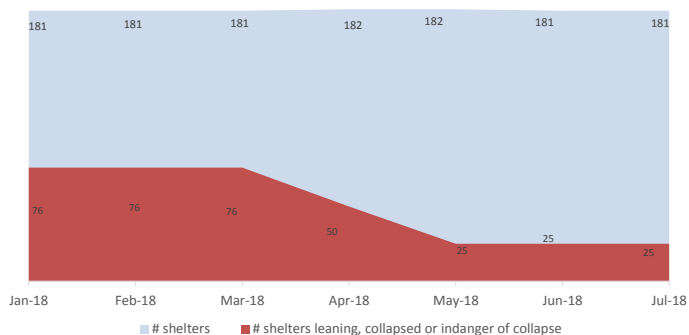


Camp Management or Focal Point Agency: DRC

Community infrastructure damage



Shelter rehabilitation and repair



Sector Overview



CCCM	# of coordinations meetings with CMCs	2
	# of meetings with service providers	2
	Community Based Group	# of meetings held
	Women Committee	1
	Men's Sports Club	1



Health	Health facility presence in the camps /sites	Yes
	# of NGO clinics	2
	# of Government clinics	0
	IDPs access to nearby health facility	Yes

NFI

NFI	# of HHs receiving WaSH consumables (soap, towel)	1448
	# of HHs receiving Sanitary Kits / Dignity Kits	1448
Shelter	# of temporary shelters (8 – 10 units)	181
	# of informal / makeshift shelters	510
	Date of the last Shelter Cluster assessment	01-Jan-18

	Functional	Non-functional
# Lightings at Latrines	2	16
#Lighting at other areas of camps	0	0
WASH	# of Hand Pumps	141
	# of Ponds	0
	# of Latrines	370
	# of Solid Waste Management System	2



Service Delivery Actors in the Camp

