

# CCCM SITE MONITORING: Dar Pai Camp

June-2018

Township: Sittwe (Rakhine, MYANMAR)



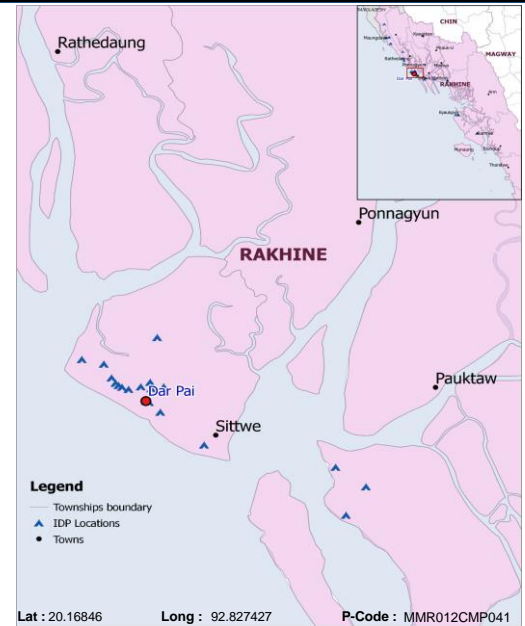
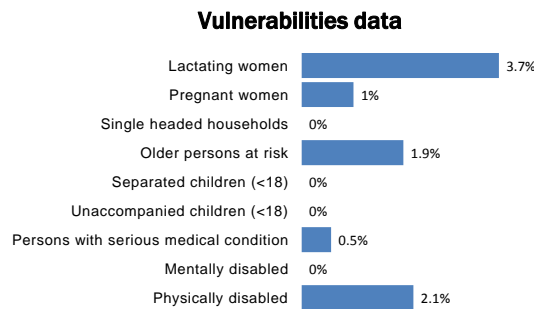
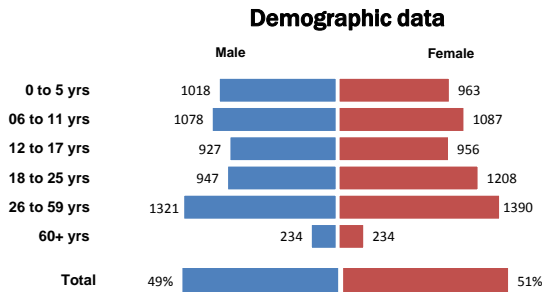
Geographic Data: Vil. Tract / Town : Bu May

Village/Ward : Dar Paing Ywar Thit

11,363 people  
 1,983 households

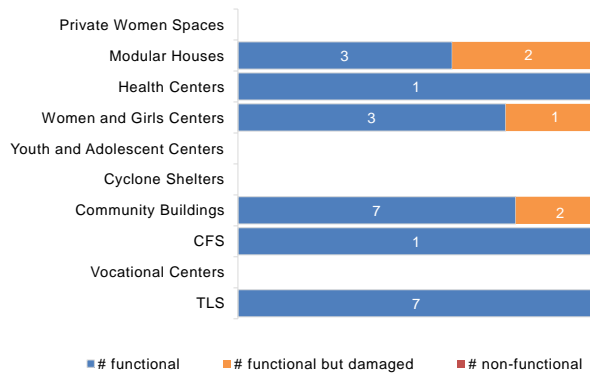
53% children  
 4% elderly

12 new borns  
 1 deaths

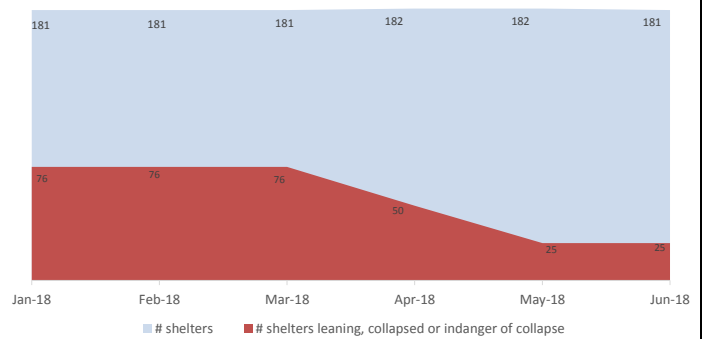


Camp Management or Focal Point Agency: DRC

## Community infrastructure damage



## Shelter rehabilitation and repair



## Sector Overview



<b>CCCM</b>	# of coordinations meetings with CMCs	1
	# of meetings with service providers	1
Community Based Group	# of meetings held	1
Camp Women's Association		



<b>Health</b>	Health facility presence	Yes
	# of NGO clinics	1
	# of Government clinics	1
	IDPs access to nearby health facility	No



<b>NFI</b>	# of HHs receiving WaSH consumables (soap, towel)	1448
	# of HHs receiving Sanitary Kits / Dignity Kits	1448
<b>Shelter</b>	# of temporary shelters (8 – 10 units)	181
	# of informal / makeshift shelters	510
	Date of the last Shelter Cluster assessment	01-Jan-18



	Functional	Non-functional
# Lightings at Latrines	2	16
#Lighting at other areas of camps	0	No Info
<b>WASH</b>		
# of Hand Pumps	139	6 (4%)
# of Ponds	0	0
# of Latrines	366	4 (1%)
# of Solid Waste Management System	1	1



## Service Delivery Actors in the Camp

