

DAMAGE ASSESSMENT OVER TUIKHINGZANG, TONZANG TOWNSHIP, CHIN DIVISION, MYANMAR

Analysis with Pleiades and WorldView-2 Data Acquired 16 September 2015 and 31 January 2013

This map illustrates satellite-detected damaged structures over Tuikhingzang town, Tonzang township, Chin Division, Myanmar. After a reported landslide induced dam that ruptured on 28 August 2015, UNITAR-UNOSAT analyzed imagery collected by the Pleiades satellite on 16 September 2015 and identified an area severely affected by a mudslide. Wide agricultural areas appear affected and the town of Tuikhingzang is partially covered by

mud. UNOSAT identified a total of 141 destroyed structures and 48 severely damaged structures in the area. Local roads are also affected and a bridge has been completely destroyed. In addition two IDP settlements are visible 1 and 3 km northeast of the town and a total of 260 possible tent shelters were identified. This is a preliminary analysis & has not yet been validated in the field. Please send ground feedback to UNITAR / UNOSAT.

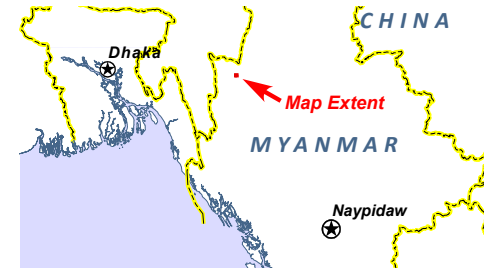
Flooding



Production Date:
17/09/2015

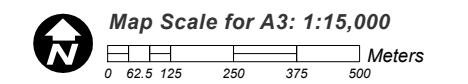
Version 1.0

Activation Number:
FL-2015-000089-MMR



LEGEND

- Destroyed structure
- Severely damaged structure
- IDP Settlement



Disaster coverage by the International Charter 'Space and Major Disasters'. For more information on the Charter, which is about assisting the disaster relief organizations with multi-satellite data and information, visit www.disasterscharter.org



Satellite Data (1): Pleiades
Imagery Dates: 16 September 2015
Resolution: 50 cm
Copyright: © CNES (2015)
Source: Airbus Defense and Space all rights reserved
Satellite Data (2): Worldview-2
Imagery Date: 31 January 2013
Copyright: DigitalGlobe Inc
Source: USGS/HDDS
Road Data : Google Map Maker / OSM / ESRI
Other Data: USGS, UNCS, NASA, NGA
Analysis : UNITAR / UNOSAT
Production : UNITAR / UNOSAT
Analysis conducted with ArcGIS v10.3

Coordinate System: WGS 1984 UTM zone 46N
Projection: Transverse Mercator
Datum: WGS 1984
Units: Meter

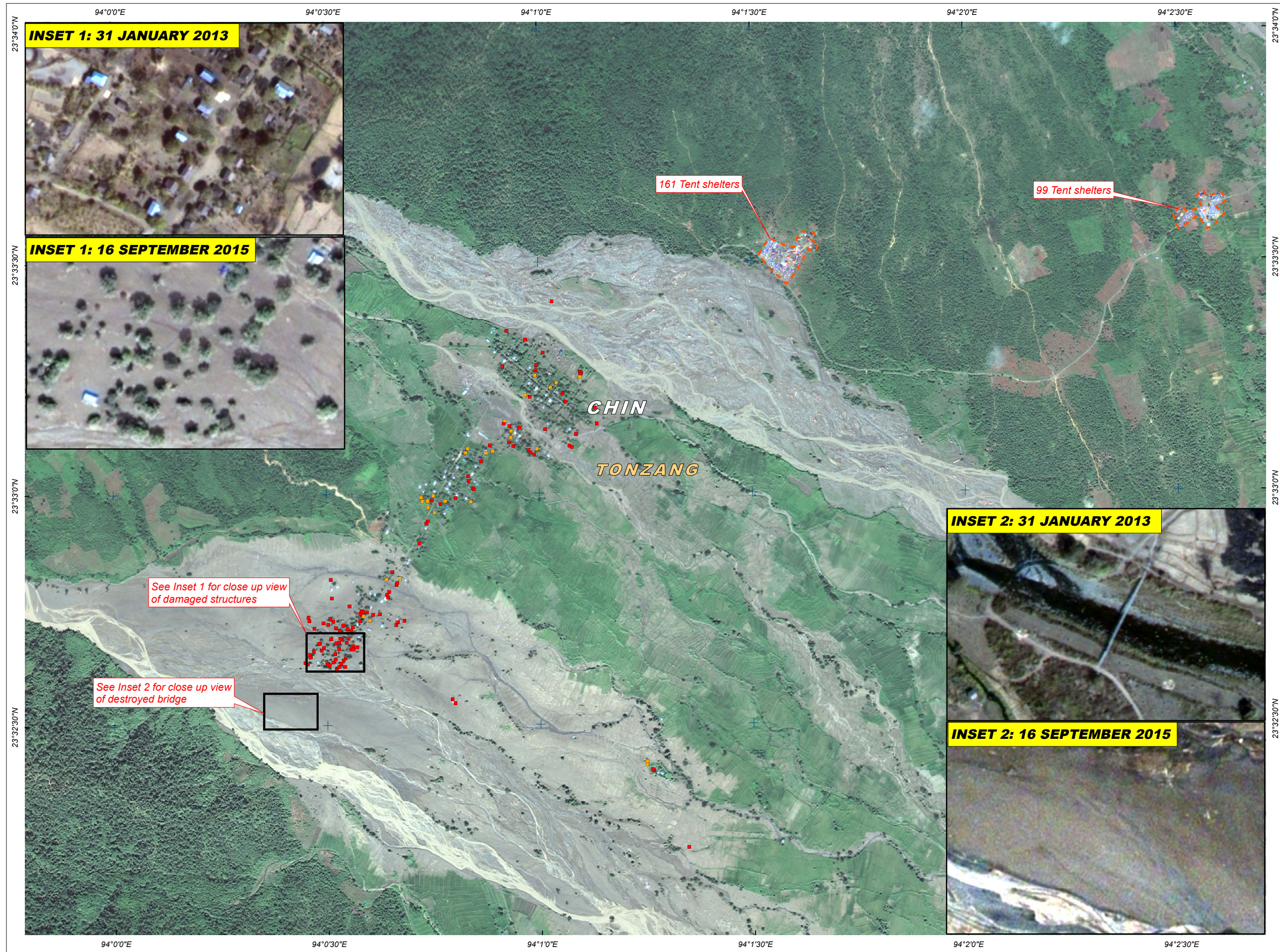
The depiction and use of boundaries, geographic names and related data shown here are not warranted to be error-free nor do they imply official endorsement or acceptance by the United Nations. UNOSAT is a program of the United Nations Institute for Training and Research (UNITAR), providing satellite imagery and related geographic information, research and analysis to UN humanitarian and development agencies and their implementing partners.

This work by UNITAR/UNOSAT is licensed under a Creative Commons Attribution-NonCommercial-ShareAlike 3.0 Unported License.



UNOSAT

Contact Information: unosat@unitar.org
24/7 Hotline: +41 76 487 4998
www.unitar.org/unosat



INSET 1: 31 JANUARY 2013

INSET 1: 16 SEPTEMBER 2015

INSET 2: 31 JANUARY 2013

INSET 2: 16 SEPTEMBER 2015

See Inset 1 for close up view of damaged structures

See Inset 2 for close up view of destroyed bridge