

Flood Hazard Map (Short Return Period)

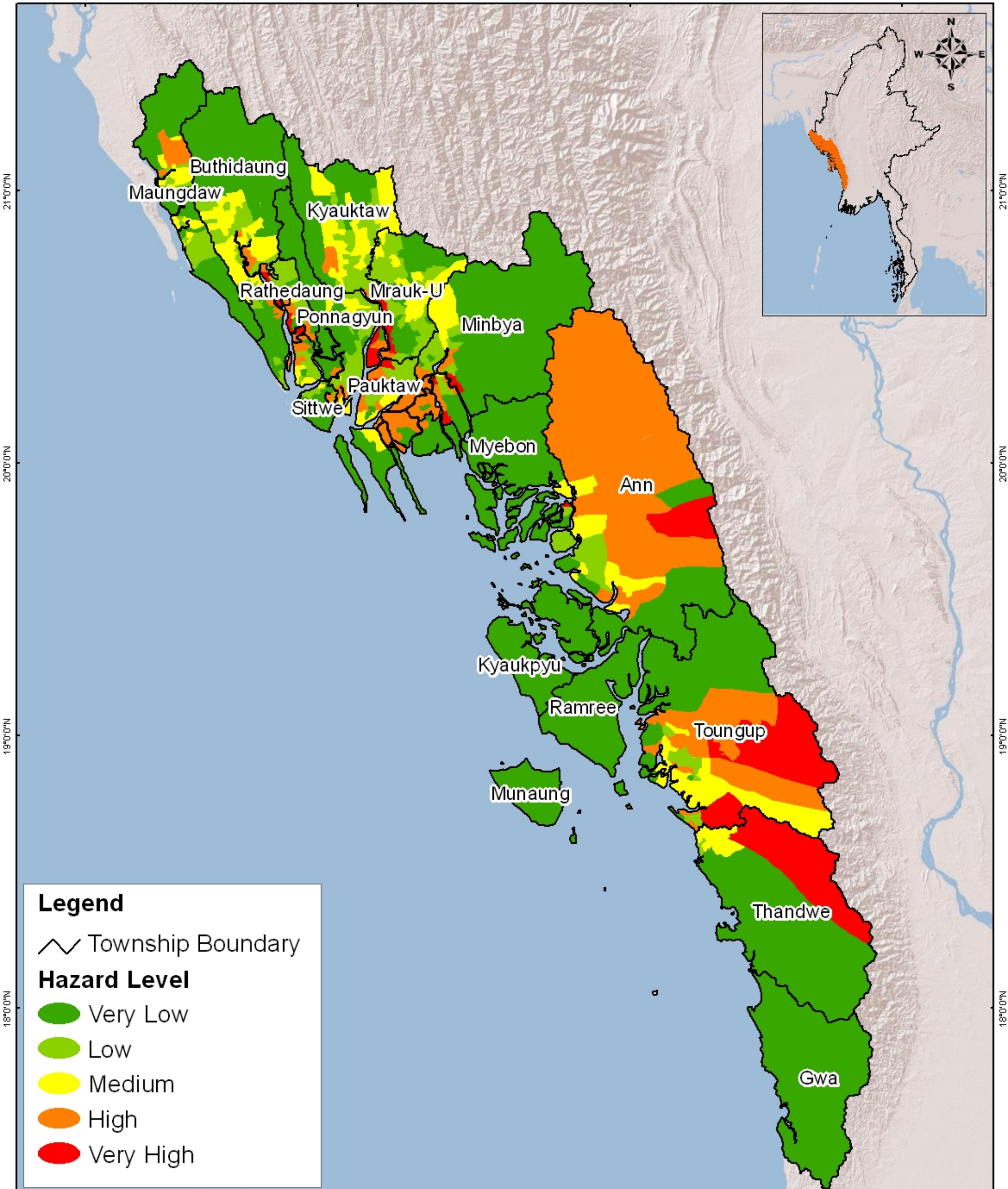
Multi Hazard Risk Assessment in the Rakhine State of Myanmar

92°0'0"E

93°0'0"E

94°0'0"E

95°0'0"E

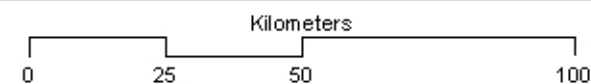


Legend

~ Township Boundary

Hazard Level

- Very Low
- Low
- Medium
- High
- Very High



Source : Department of Meteorology and Hydrology (DMH), DEM ASTER 30 m
 Disclaimer : Administrative boundary depicted in this map may not reflect reality on the ground.

Map production date: September 2011

92°0'0"E

93°0'0"E

94°0'0"E

95°0'0"E