

FLOOD WATERS OVER ANN AND MYEBON AREA, RAKHINE STATE, MYANMAR

Analysis with ALOS-2 / PALSAR-2 Data Acquired 16 August 2015 and Landsat-8 Data Acquired 30 January 2015

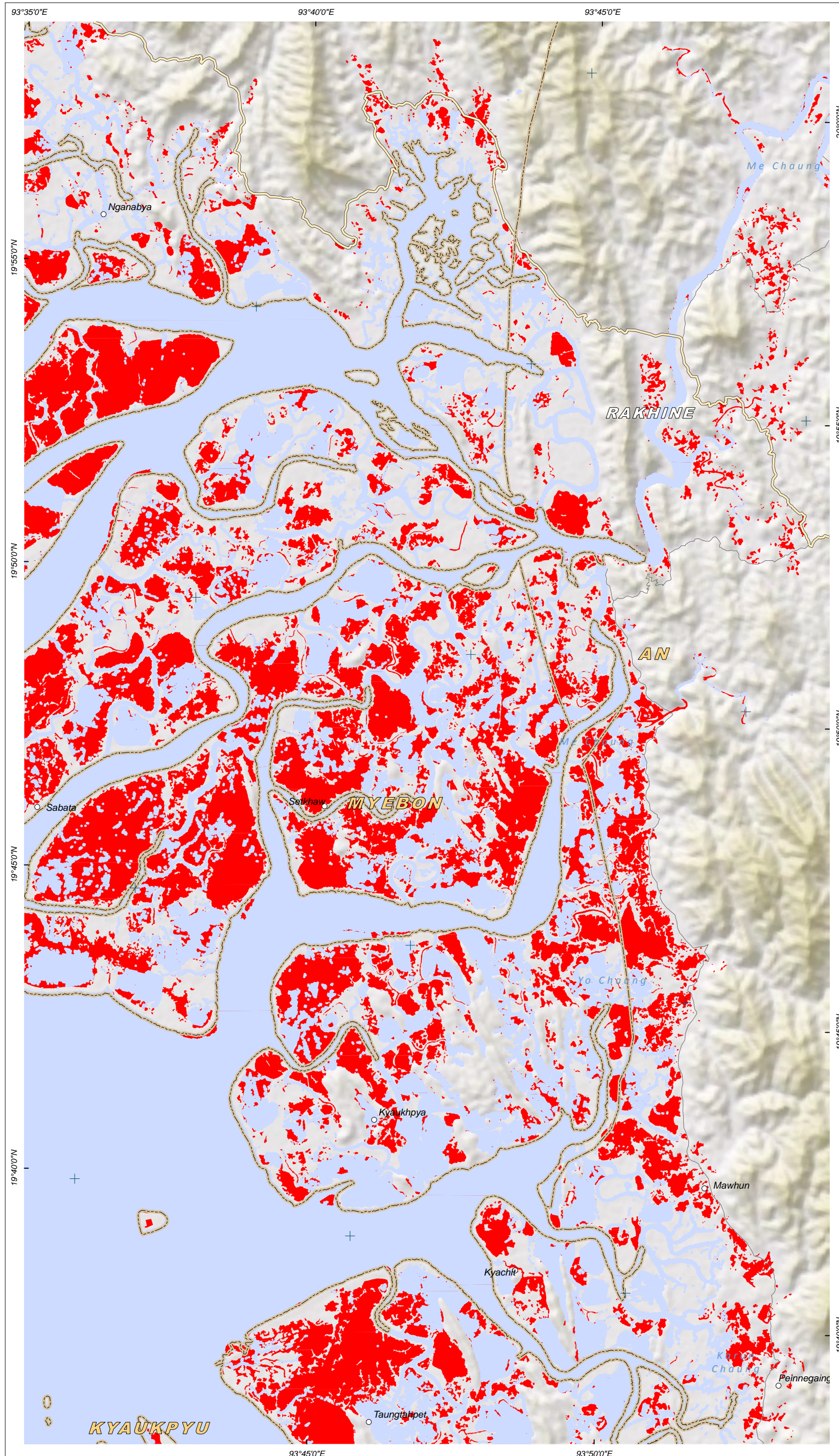
Flooding



Production Date: 8/17/2015

Version 1.0

Glide Number: FL-2015-000089-MMR



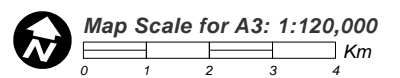
This map illustrates satellite-detected flood waters over western Rakhine State, Myanmar, in the areas of Ann and Myebon townships, as imaged by the ALOS-2 / PALSAR-2 satellite on 16 August 2015. In the analyzed area a total of ~24,600 ha of lands are affected by floods, mainly agricultural and/or paddy fields. The surface covered with water in the analyzed area has increased from a pre-flood level of 10.2% to 15.2% during the flood period. It is likely that flood waters have been systematically underestimated along highly vegetated areas near the main river banks, and within built-up urban areas because of the special characteristics of the satellite data used. This is a preliminary analysis and has not yet been validated in the field. Please send ground feedback to UNITAR-UNOSAT.

LEGEND

- Village
- Primary Road
- Secondary Road
- ▭ State Boundary
- ▭ Township Boundary

FLOOD WATER EXTENT ANALYSIS (Satellite-Based Classification)

- Probable Standing Flood Waters: [ALOS-2 / PALSAR-2 - 16 August 2015]
- Pre-Crisis Water Extent [Landsat-8 - 30 January 2015]



Satellite Data (1): ALOS-2 / PALSAR-2
Imagery Dates: 16 August 2015
Resolution: 6.25 m
Copyright: JAXA
Source: JAXA
Satellite Data (2): Landsat-8
Imagery Dates: 30 January 2015
Resolution: 30 m
Copyright: USGS
Source: USGS
Road Data : OpenStreetMap
Other Data : USGS, UNCS, NASA, NGA, COD, MIMU
Analysis : UNITAR / UNOSAT
Production: UNITAR / UNOSAT
Analysis conducted with ArcGIS v10.3

Coordinate System: WGS 1984 UTM Zone 46N
Projection: Transverse Mercator
Datum: WGS 1984
Units: Meter

The depiction and use of boundaries, geographic names and related data shown here are not warranted to be error-free nor do they imply official endorsement or acceptance by the United Nations. UNOSAT is a program of the United Nations Institute for Training and Research (UNITAR), providing satellite imagery and related geographic information, research and analysis to UN humanitarian and development agencies and their implementing partners.

This work by UNITAR/UNOSAT is licensed under a Creative Commons Attribution-NonCommercial-ShareAlike 3.0 Unported License.

Disaster coverage by the International Charter 'Space and Major Disasters'. For more information on the Charter, which is about assisting the disaster relief organizations with multi-satellite data and information, visit www.disasterscharter.org



UNOSAT

Contact Information: unosat@unitar.org
24/7 Hotline: +41 76 487 4998
www.unitar.org/unosat