

# FLOOD WATERS OVER ANN AREA, RAKHINE STATE, MYANMAR

Analysis with ALOS-2 / PALSAR-2 Data Acquired 12 August 2015 and 25 March 2015 and Landsat-8 Data Acquired 30 January 2015

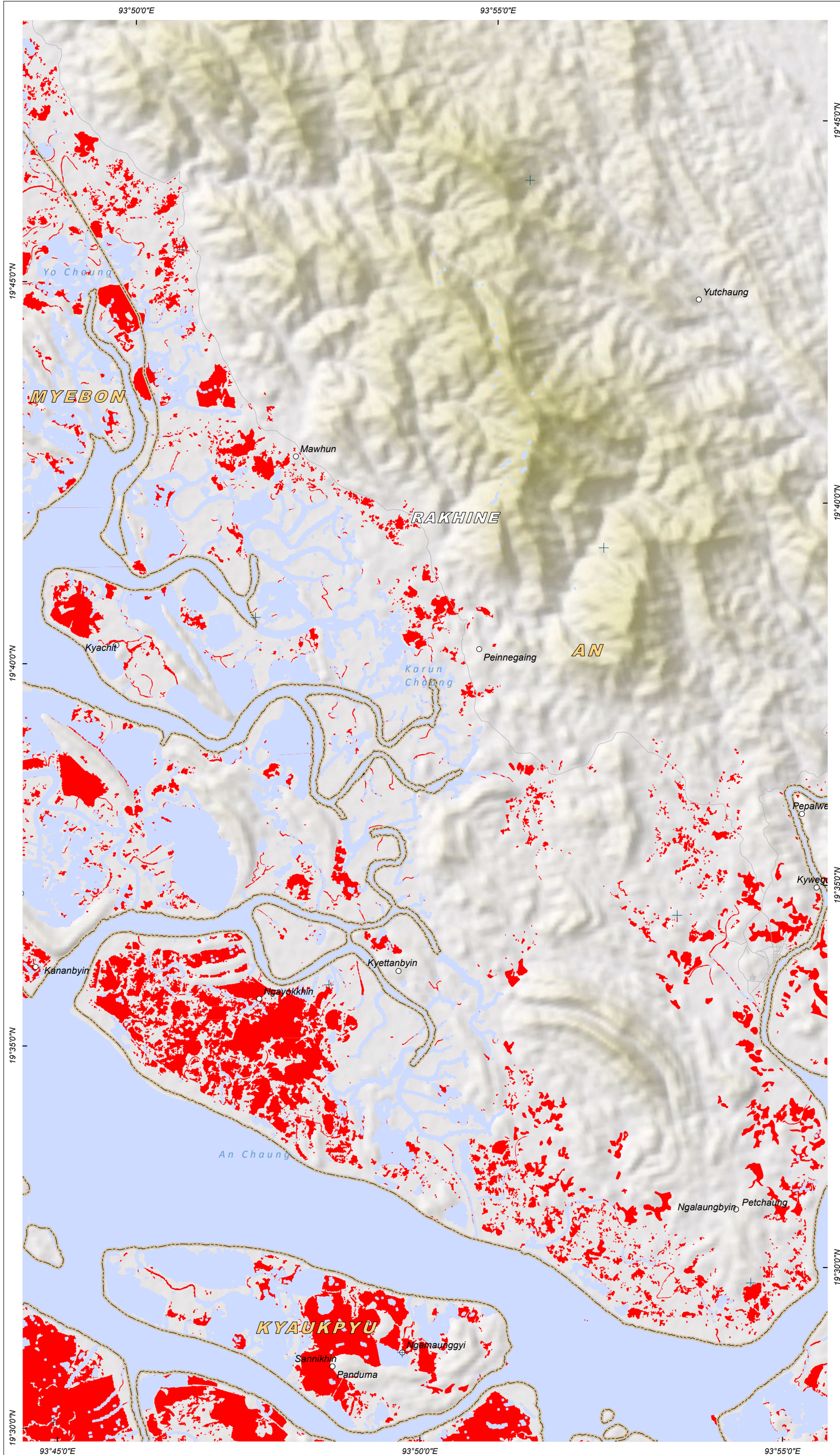
**Flooding**



Production Date: 8/14/2015

Version 1.0

Glide Number: FL-2015-000089-MMR



This map illustrates satellite-detected flood waters over western Rakhine State, Myanmar, in the areas of Ann and south of Myebon townships, as imaged by the ALOS-2 / PALSAR satellite on 12 August 2015. In the analyzed area a total of ~3,800 ha of lands are affected by floods, mainly agricultural and/or paddy fields. The surface covered with water in the analyzed area has increased from a pre-flood level of 3.8% to 4.6% during the flood period. It is likely that flood waters have been systematically underestimated along highly vegetated areas near the main river banks, and within built-up urban areas because of the special characteristics of the satellite data used. This is a preliminary analysis and has not yet been validated in the field. Please send ground feedback to UNITAR-UNOSAT.

**LEGEND**

- Village
- Airport
- Secondary Road
- State Boundary
- Township Boundary

**FLOOD WATER EXTENT ANALYSIS**  
(Satellite-Based Classification)

- Probable Standing Flood Waters: [ALOS-2 / PALSAR-2 - 12 August 2015]
- Pre-Crisis Water Extent [Landsat-8 - 30 January 2015]

Map Scale for A3: 1:95,000  
0 1 2 3 Km

Satellite Data (1): ALOS-2 / PALSAR-2  
Imagery Dates: 12 August 2015 and 25 March 2015  
Resolution: 6.25 m  
Copyright: JAXA  
Source: JAXA  
Satellite Data (2): Landsat-8  
Imagery Dates: 30 January 2015  
Resolution: 30 m  
Copyright: USGS  
Source: USGS  
Road Data : OpenStreetMap  
Other Data : USGS, UNCS, NASA, NGA, COD, MIMU  
Analysis : UNITAR / UNOSAT  
Production: UNITAR / UNOSAT  
Analysis conducted with ArcGIS v10.3

Coordinate System: WGS 1984 UTM Zone 46N  
Projection: Transverse Mercator  
Datum: WGS 1984  
Units: Meter

The depiction and use of boundaries, geographic names and related data shown here are not warranted to be error-free nor do they imply official endorsement or acceptance by the United Nations. UNOSAT is a program of the United Nations Institute for Training and Research (UNITAR), providing satellite imagery and related geographic information, research and analysis to UN humanitarian and development agencies and their implementing partners.

This work by UNITAR/UNOSAT is licensed under a Creative Commons Attribution-NonCommercial-ShareAlike 3.0 Unported License.

Disaster coverage by the International Charter 'Space and Major Disasters'. For more information on the Charter, which is about assisting the disaster relief organizations with multi-satellite data and information, visit [www.disasterscharter.org](http://www.disasterscharter.org)



**UNOSAT**

Contact Information: [unosat@unitar.org](mailto:unosat@unitar.org)  
24/7 Hotline: +41 76 487 4998  
[www.unitar.org/unosat](http://www.unitar.org/unosat)