

FLOOD WATERS OVER CENTRAL MAGWAY STATE, MYANMAR

Analysis with TerraSAR-X Satellite Data Acquired 6 August 2015 and 8 May 2011

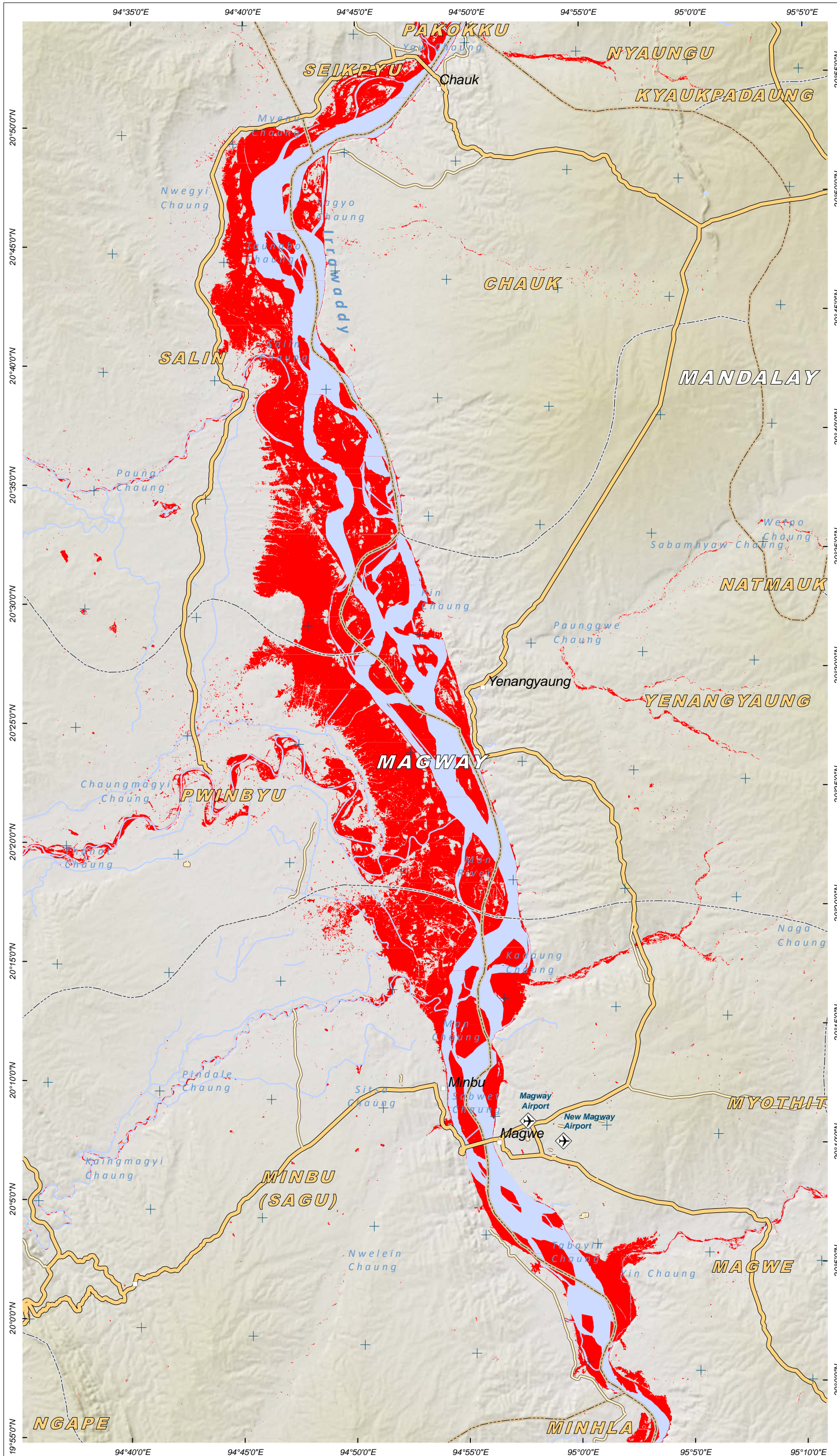
Production Date:

07/08/2015



Version 1.0

Glide Number:
FL-2015-000089-MMR



This map illustrates satellite-detected flood waters in the Central region of Magway State in the areas of Chalin, Chauk, Pwinbyu, Yenangyaung, Magwe and Sagu Townships of Myanmar as imaged by the TerraSAR-X satellite on 6 August 2015. Waters along the Irrawaddy River have expanded and inundated lands on either sides of the Irrawaddy river bank. Total surface covered with water in the analyzed area has increased from a pre-flood level of 6% to 15% during the flood period, and as of 6 August 2015 a total of ~60,000 ha of lands were affected. This is a preliminary analysis and has not yet been validated in the field. Please send ground feedback to UNITAR-UNOSAT.

LEGEND

- Town
- Airport
- Highway/Primary Road
- Secondary Road
- State Boundary
- Township Boundary

FLOOD WATER EXTENT ANALYSIS (Satellite-Based Classification)

- Probable Standing Flood Waters: [TerraSAR-X - 6 August 2015]
- Pre-Crisis Water Extent: [TerraSAR-X - 8 May 2011]

Map Scale for A3: 1:300,000

Satellite Data (1): TerraSAR-X
Imagery Dates: 6 August 2015
Resolution: 6.25 m
Copyright: © DLR e. V. 2015, Distribution Airbus DS Geo GmbH
Source: DLR
Satellite Data (2): TerraSAR-X
Imagery Dates: 8 May 2011
Resolution: 6.25 m
Copyright: © DLR e. V. 2015, Distribution Airbus DS Geo GmbH
Source: DLR
Road Data : OpenStreetMap
Other Data: USGS, UNCS, NASA, NGA, MIMU
Analysis : UNITAR / UNOSAT
Production: UNITAR / UNOSAT
Analysis conducted with ArcGIS v10.3

Coordinate System: WGS 1984 UTM Zone 46N
Projection: Transverse Mercator
Datum: WGS 1984
Units: Meter

The depiction and use of boundaries, geographic names and related data shown here are not warranted to be error-free nor do they imply official endorsement or acceptance by the United Nations. UNOSAT is a program of the United Nations Institute for Training and Research (UNITAR), providing satellite imagery and related geographic information, research and analysis to UN humanitarian and development agencies and their implementing partners.

This work by UNITAR/UNOSAT is licensed under a Creative Commons Attribution-NonCommercial-ShareAlike 3.0 Unported License.

Disaster coverage by the International Charter 'Space and Major Disasters'. For more information on the Charter, which is about assisting the disaster relief organizations with multi-satellite data and information, visit www.disasterscharter.org



UNOSAT

Contact Information: unosat@unitar.org
24/7 Hotline: +41 76 487 4998
www.unitar.org/unosat