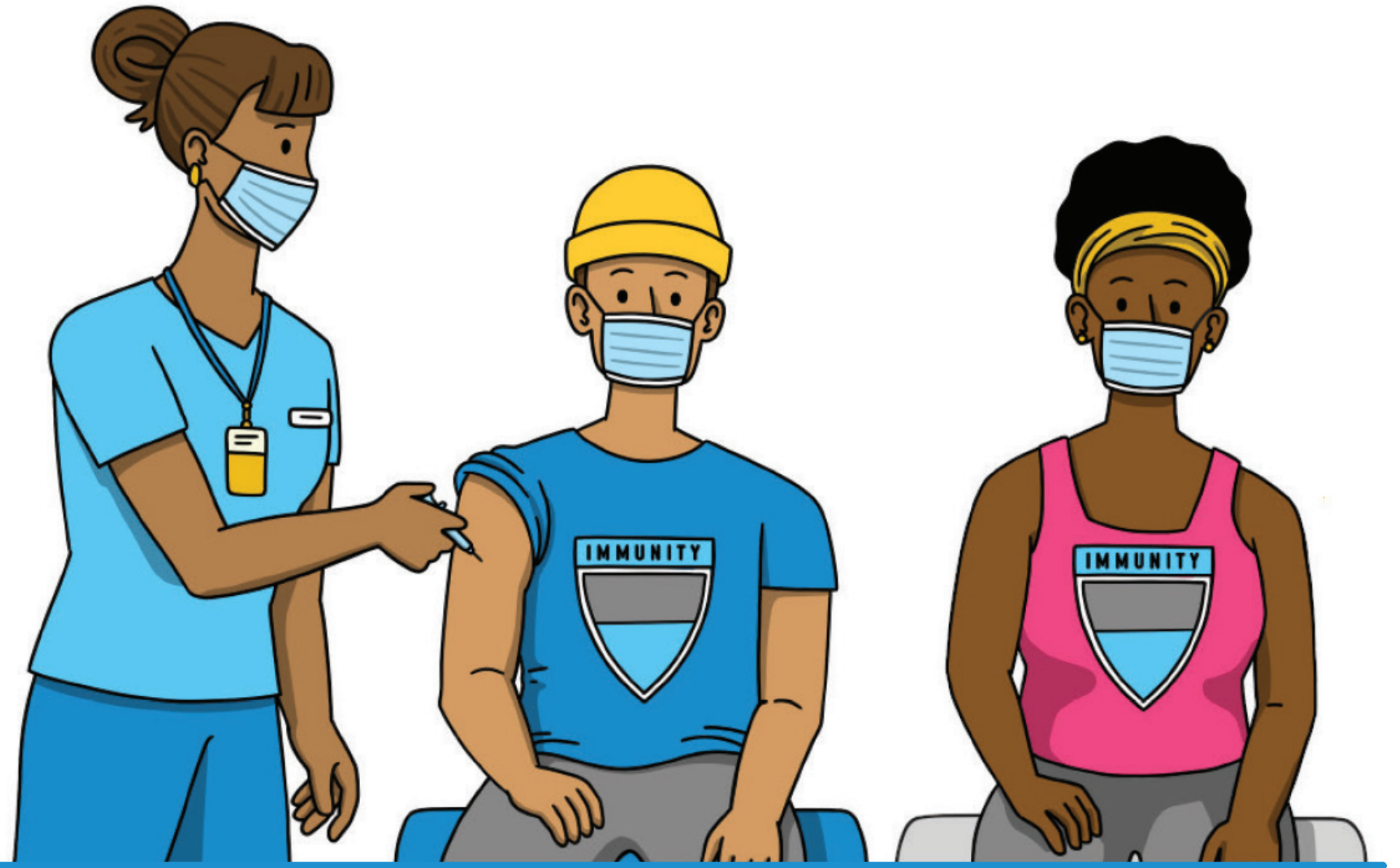
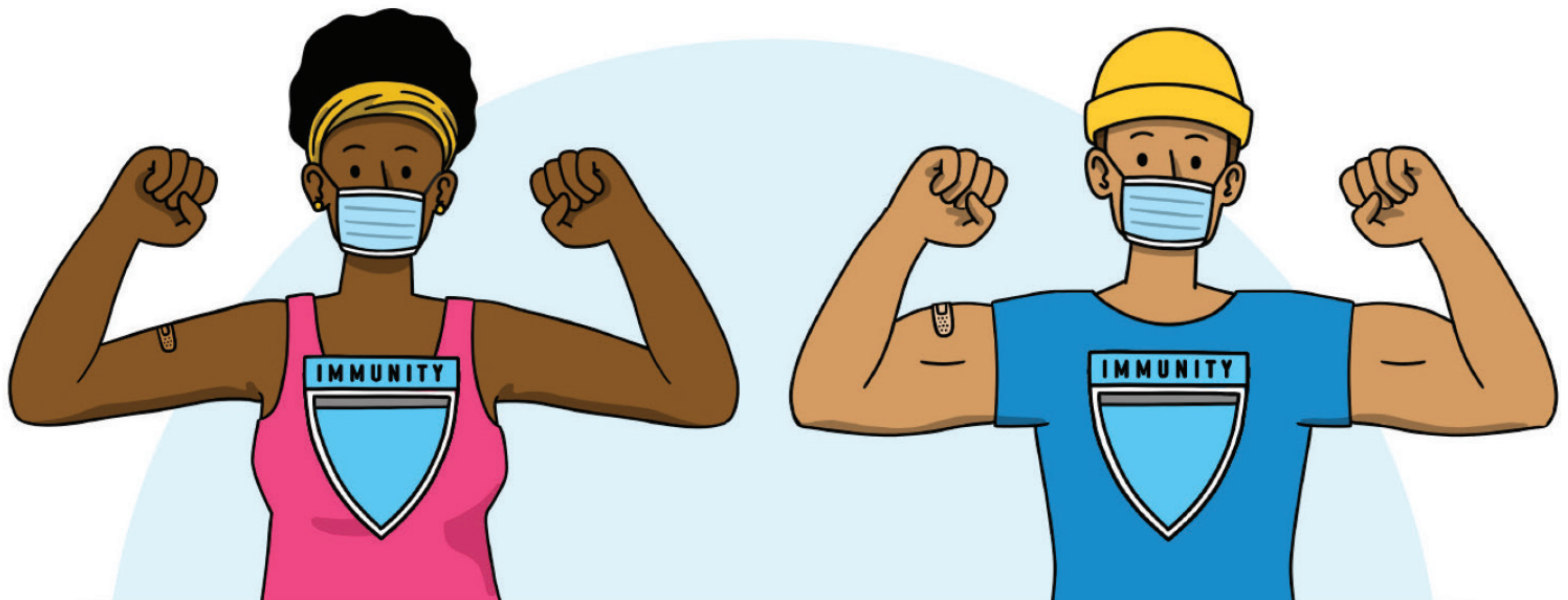


Naw Covid-19 na gaw na dzeu-eu qaw ka kaw-eh se tcaw^ -eu lo meh.

Na gaw ma bi nyaw la pha-eh a dui ghaw maw la qhoe ah -eu gha a myah ni gha qa^ lo^ choe -eu a dui ma si nya-eu mi neh meh.



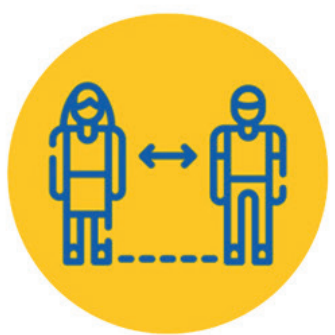
Ka kaw-eh se -ah na gaw ma bi nyaw la pha-eh a yam ghaw myah ni gha daw^ lah neh -eu ja^ gha leh saw hta -aw.



Daw taw^ lu chaw hteh-eu la qhoe hti kaw^ lo -eh la^ qhm -aw.



Sa bya haw - eu i^ cu neh dzui shaw -aw.



Hti gha hti gha yaw ghaw ghaw -eh jaw -aw.



Qha meh haw - eu na meh meh tsah tsah -aw.



Daw phev tu ni jaw ya -eu deu -ah chaw tse haw -aw.



Yaw ceu^ ceu^ - eh jaw -aw.



Ja leh yaw mui -eh za ni hta -aw.



Ka kaw-eh se tcaw -aw.

Covid-19 haw -eu a yaw -ah neh pa^ do^ le -eu a^ jiu nui deu ma bi nyaw keu^ la pha -eh la^ qhm -eu gha du sa ti bi -eu ga kaw^ heu deu -ah chaw hteh-eu gha du yaw jaw na lu nui ma -ah sha daw^ hta -aw.