

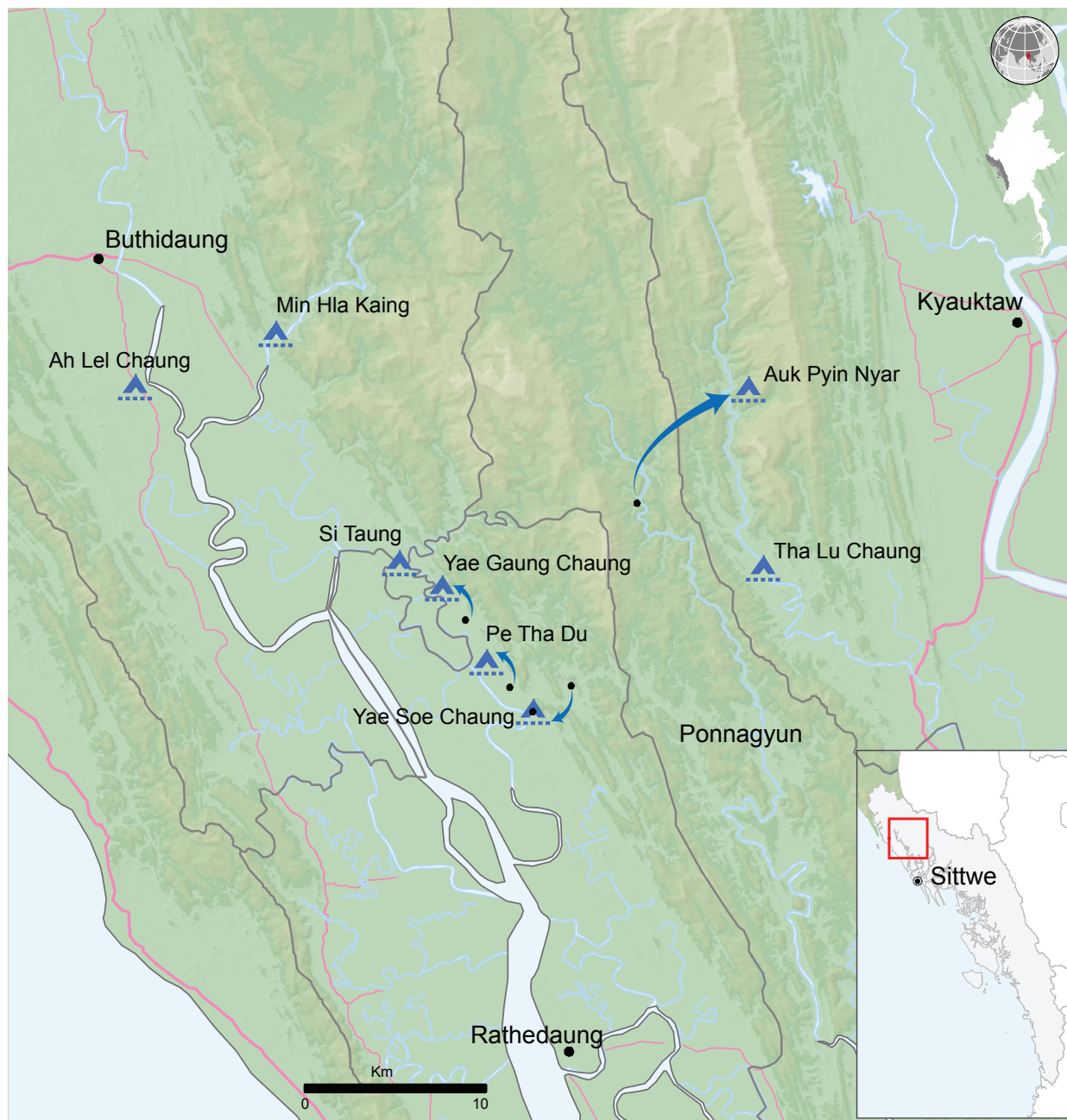
Myanmar: New Displacement in Rakhine State (as of 28 April 2016)

Since mid-April fighting between the Myanmar Military and the Arakan Army has displaced approximately 1,100 people in Buthidaung, Rathedaung and Kyauktaw townships in Rakhine State. Those displaced are primarily staying in schools and a smaller number with relatives.

On 25 April, a joint mission by the Rakhine State Government, the UN and INGOs visited four displacement sites in Buthidaung and Rathedaung to assess needs. Local authorities and other local groups have provided food for IDPs. International organizations will be providing non-food items, including sleeping mats and cooking utensils as well as water and sanitation support.

On 26 and 27 April, another mission visited IDP sites in Kyauktaw where there are around 170 IDPs. Local CSOs have provided some food assistance, but there is a need for additional food assistance, as well as for NFIs and water.

The UN and partners are liaising closely with the government on meeting outstanding humanitarian needs.

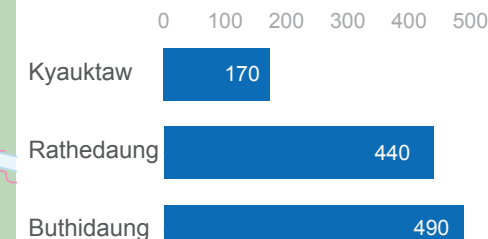


DISPLACEMENT

~1,100 IDPs

8 Temporary IDP sites

NUMBER OF IDPS



- New temporary IDP sites
- Place of origin villages
- Rivers / water bodies
- Roads

The boundaries and names shown and the designations used on this map do not imply official endorsement or acceptance by the United Nations.

Creation date: 28 April 2016 Sources: OCHA, INGOs, Rakhine State Government, MIMU Feedback: ochamyanmar@un.org www.unocha.org www.reliefweb.int