



## MIMU 5W Trends - 2020 to 2023

### The MIMU 5W

MIMU's "Who does What Where, When and for Whom" database, or 5W, is a tool tracking the implementation of humanitarian, development and peace focused projects to support coordination, planning and efficient use of resources. MIMU has conducted this exercise regularly in Myanmar since 2008. Information is currently compiled every six months based on reports provided voluntarily by contributing agencies.

The MIMU 5W shows:

- which organizations (*WHO*),
- are carrying out which activities (*WHAT*),
- in which locations (*WHERE*),
- project status – whether planned, ongoing or completed (*WHEN*)
- project beneficiary focus (for *WHOM*) – whether focused on IDPs or other vulnerable communities.

MIMU 5W Products capture information on the presence of organisations and do not indicate the volume of assistance, the number of beneficiaries, or the extent to which needs are met or unmet.

### Summary

The MIMU 5W Comparison report compares MIMU 5W results from August 2020 to August 2023, looking particularly at the impact of events in early 2021 on agencies' reported activities.

**2021 saw a significant reduction in the number of reporting agencies and activities compared to the previous round in August 2020:**

- **Over 30% reduction in reporting agencies** (from 213 agencies in Aug 2020 to 159/163 agencies in May/Oct 2021), mainly INGOs and NNGOs.
- **33% reduction in the number of projects reported countrywide** (over 200 less projects) in 2021, with reductions mainly in Shan (over 100), Yangon (over 90) and Rakhine (over 60).
- **A significant reduction in the number of activities reported as ongoing** - 43,428 less activities in May 2021, mainly in Tanintharyi (84% reduction), Shan east (58%), Mon (57%), Shan south (55%) and Kayin (50%), and 35,930 less activities in Oct 2021, mainly in Rakhine (18%), Chin and Shan south (11% in each), Tanintharyi (10%), Kayin (9%), Shan north (8%) and Mon (7%).
- **Suspension of activities was significant.** The highest number of suspended activities were reported in May 2021 (19 times higher than in August 2020).

**2022 and 2023 has seen increase in reporting agencies and reported activities compared to 2021:**

- **About 1,000 more village tracts/towns reported ongoing activities in 2023** (over 83%-86% of VTs/Towns around the country), mainly in Bago east, Mon, Sagaing and Tanintharyi as compared to 2021.
- **Less activities reported as suspended** in 2023 (1% of total reported activities) compared to 2021 (around 10%) and August 2022 (2%) – this does not indicate however whether activities have ended/completed or resumed.

**Overall, despite the higher number of reporting agencies over the past 12 months:**

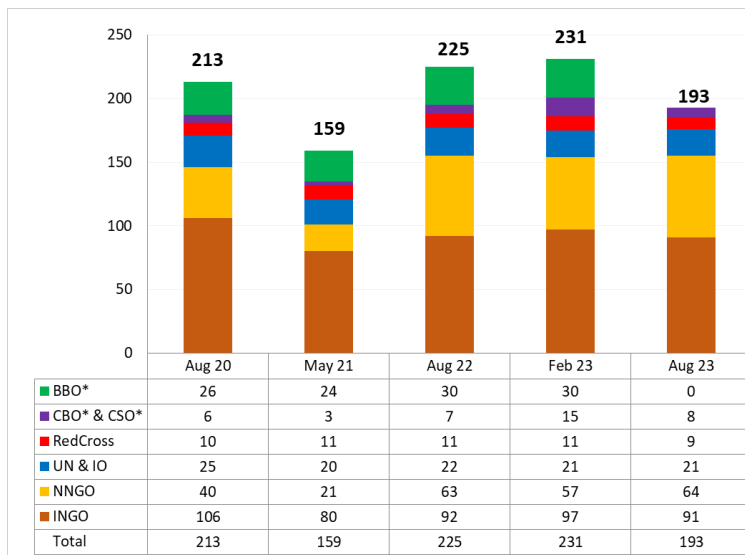
- **More activities were reported as "completed/ended"** – 21,257 more completed/ended activities were found in August 2023 than August 2022. This change was particularly noted within **Livelihoods activities, where** one agency ended a project with a large number of micro credit activities in June 2023.
- **A lower percentage of total activities were reported at VTs/Towns level as "ongoing"** – 2% less ongoing activities reported as active (from 85% in Aug 2022 and 83% in Aug 2023)
- **More ongoing activities focused on IDP and Host communities** (25% increase) alongside a 6% decrease in Development focused activities.

## Trend Analysis

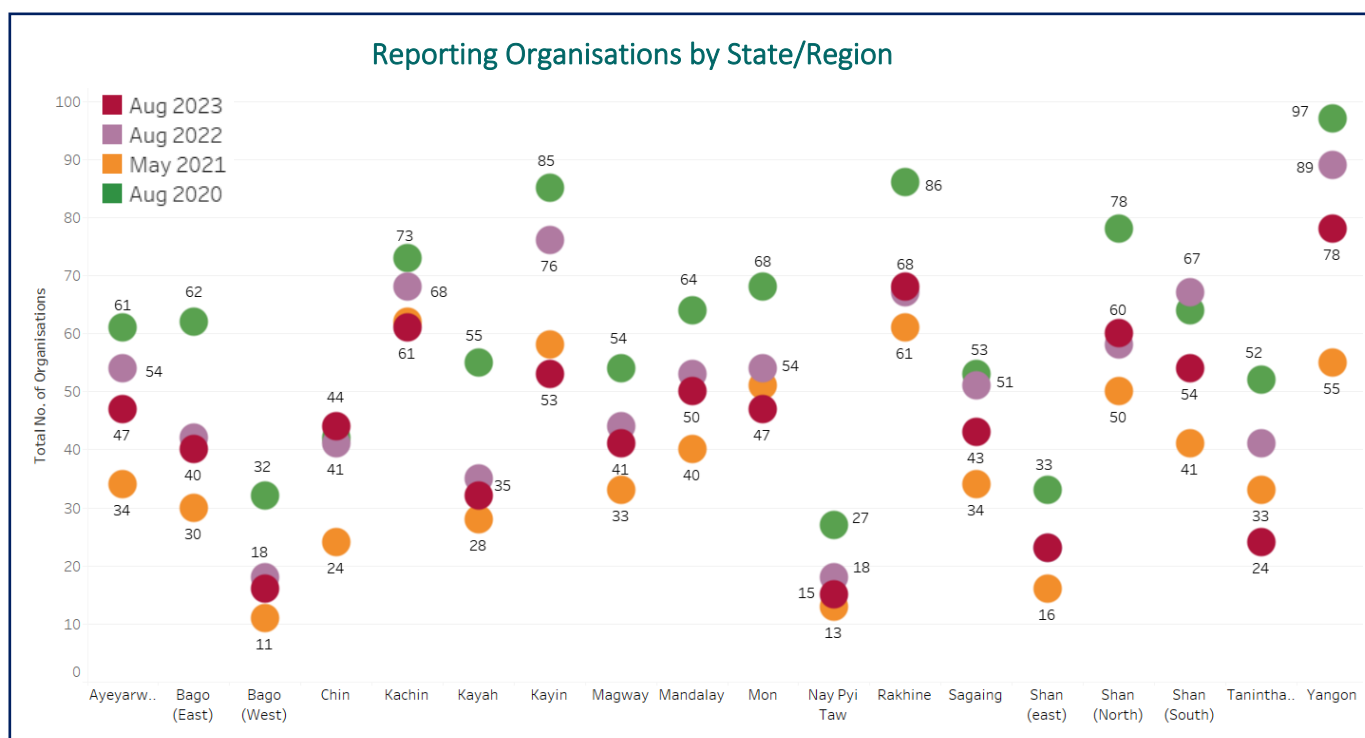
This analysis reviews activities reported to the MIMU 5W between August 2020 and August 2023. The MIMU 5W tool captures information on the type, area and status of activities, but does not include the number of people reached, the extent to which needs are met or any financial information. Please share your feedback, suggestions and any queries on this analysis with us via [info.mimu@undp.org](mailto:info.mimu@undp.org)

## Reporting Organizations

After high levels of reporting through 2019 and 2020, the number of reporting agencies dropped significantly in 2021 before rising in Aug 2022 and Feb 2023. 38 less organisations reported in Aug 2023 compared to previous round in Feb 2023, mainly border-based agencies who usually report projects in southeastern Myanmar. There has been a notable increase in the number of NNGOs which is now higher than in 2020.

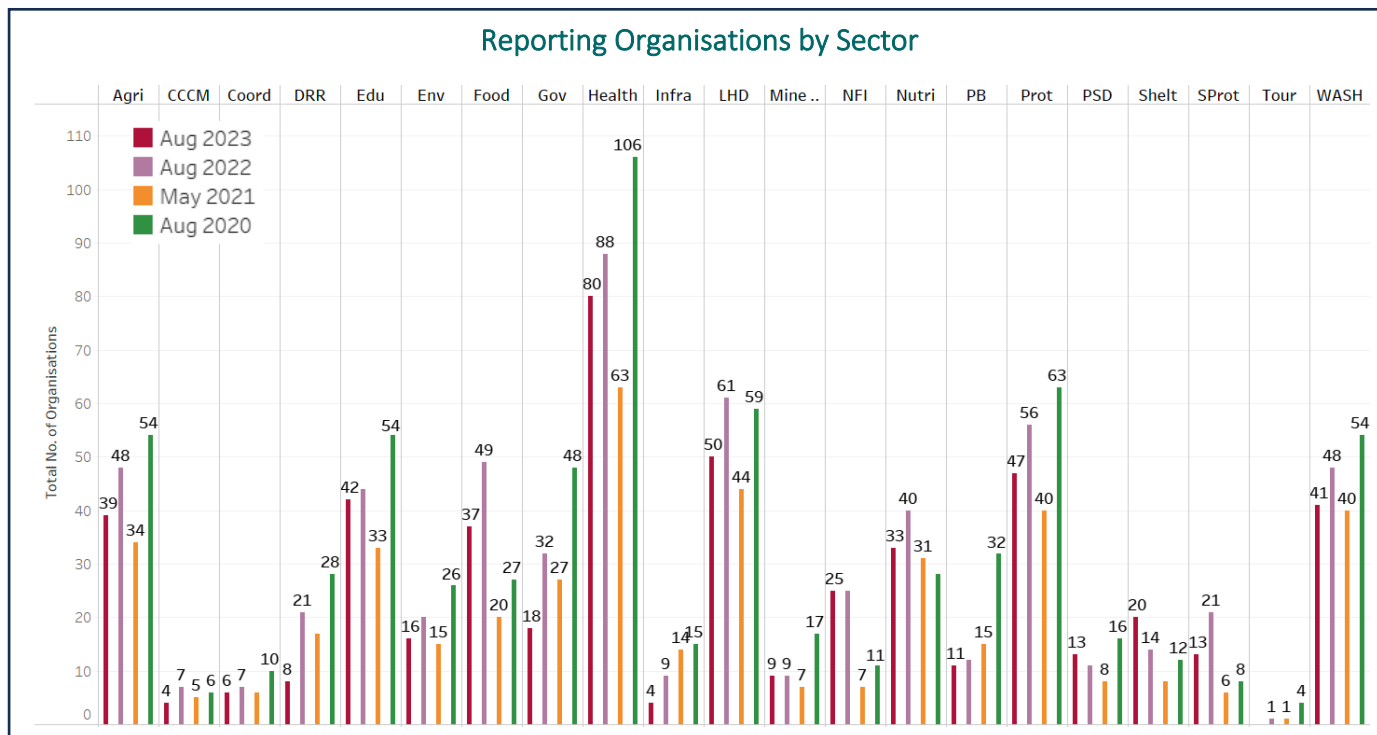


Regarding the number of organisations with ongoing activities by state/region, **Aug 2020 saw the highest number of organisations in every state and region except Chin and Shan South.** Significantly less organisations were found in Kayin (32 less organisations), Tanintharyi (28 less), Kayah (23 less) and Bago east (22 less) due to no 5W data received from border-based agencies in Aug 2023. Compared to Aug 2022, less organisations with projects under implementation were found in all state/region except Chin (3 more organisations), Shan north (2 more) and Rakhine (1 more).



## Reporting by Sector

Engagement has dropped in 16 sectors in Aug'2023 compared to Aug'2020, particularly interventions related to Governance (30 less organisations with ongoing activities), Health (26 less), Peace Building/Conflict Prevention (21 less) and Disaster Risk Reduction (20 less). By contrast, there was an increase in agencies reporting work in 5 mainly humanitarian-focused sectors - Non-food items (14 more organisations), Food (10 more), Shelter (8 more), Nutrition and Social Protection (5 more in each).



The past 12 months (Aug'2022 to Aug'2023) saw an increase in agency engagement in 2 sectors; Shelter (6 more reporting organisations and more work on Emergency shelter and Shelter support) and Private Sector Development (2 more organisations with more work on Skills Development and Small and Medium Enterprises). Agency engagement was reduced in Governance (14 less organisations reporting activities), Disaster Risk Reduction (13 less) and Food (12 less).

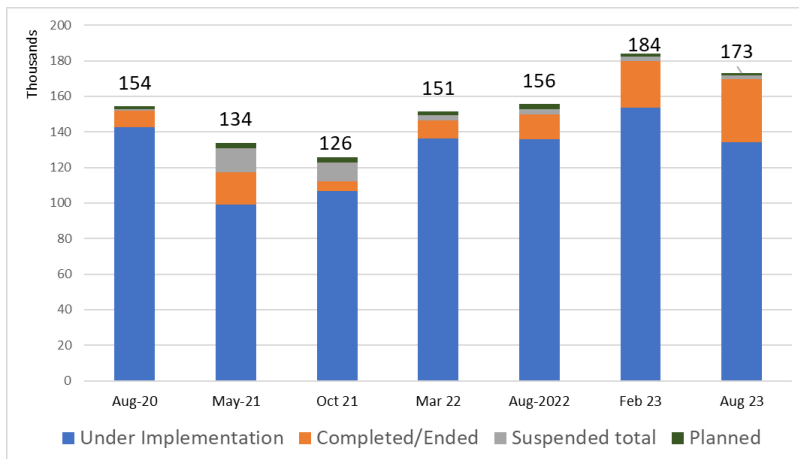
## Reporting by Project status

2023 was notable for the very high number of activities reported as completed (2.7 times higher than Aug'2020), with 35,271 completed activities reported in August 2023 compared to 9,342 in August 2020.

Project Status	Aug 20		May 21		Aug 22		Aug 23	
	No. of Activities per Location	% of total reported activities	No. of Activities per Location	% of total reported activities	No. of Activities per Location	% of total reported activities	No. of Activities per Location	% of total reported activities
Activities reported at VT/town and/or Village/ward level	131,314	92%	119,395	89%	127,226	94%	162,949	94%
Under Implementation	142,674	92%	99,246	74%	135,758	87%	13,4223	78%
Completed/Ended	9,342	6%	18,135	14%	14,014	9%	35,271	20%
Suspended due to access/security constraints			7,897	6%	1,921	1%	1,228	1%
Suspended due to funding constraints			191	0.1%	320	0.2%	121	0.1%
Suspended for other reasons			5,402	4%	915	0.6%	915	0.5%
<b>Suspended total</b>	674	0.40%	13,490	10%	3,156	2%	2,264	1%
Planned	1,787	1%	3,022	2%	2,856	2%	1,289	1%
<b>Grand Total</b>	<b>154,477</b>	<b>100%</b>	<b>133,893</b>	<b>100%</b>	<b>155,784</b>	<b>100%</b>	<b>173,047</b>	<b>100%</b>

In both Aug 2022 and Aug 2023, the number of suspended activities were lower than in May 2021, but still a significant number of activities were suspended compared to Aug 2020, mainly due to access/security constraints. It is not possible to assess how many of the suspended activities from 2021 and 2022 were ended vs resumed by 2023 due to the changes in project names and locations, however most of the activities reported as suspended in August 2023 were in Tanintharyi (over 627 activities suspended), Shan north (443), Rakhine (325), Sagaing (187) and Yangon (132). Note that this reflects the organisation’s assessment of project status at the time of MIMU 5W reporting and may not capture temporary suspensions on the ground.

A particularly high number of activities have been completed/ended over the past 12 months since Aug’2022 (26,376 activities, or 14% of the total activities reported to the MIMU 5W in Feb 2023 mainly in Health, WASH, Protection and Nutrition and 35,271 activities, or 20% in Aug 2023 mainly in Livelihoods, WASH, Education and Nutrition.)



615 village tracts/towns and 10 camps with activities in Aug’2020 no longer had any activities in Aug’2023. VT/town level reductions were mainly in Rakhine (149 less), Magway (135), Shan south (114), Sagaing (87), Tanintharyi (76) and Ayeyarwady (62), whereas camp-level interventions were reduced in Rakhine (11 less camps) and Kachin (5 less) but increased in Shan north (6 more camps).

Village tracts/towns with reported activities	Aug-20	May-21	Aug-22	Aug-23
Total No. of Village Tracts (VTs) and Towns in Myanmar	14,304	14,303	14,303	14,303
VTs and Towns with reported activities – All Sectors	12,490	10,984	12,085	11,875
% of VTs and Towns with reported activities	87%	77%	85%	83%

23 less nation-wide projects were reported over the past 12 months (Aug’2022 to Aug’2023), the majority in Tanintharyi (30 less projects) and Kayin (26 less).

This is still 125 less nation-wide projects than in Aug’2020. Reductions were most significant mainly in Shan (79 less projects), Kayin (78 less), Yangon (77 less), Tanintharyi (44 less), Magway (43 less), Mon (42 less) and Kayin (41 less).

\*Number of Nation-wide projects is estimated by a unique count of ongoing overall projects implemented by agencies. Note that one project may be implemented in more than one state/region. In that case, the accumulated number of projects by state/region is not equal to the number of nation-wide projects.

State/ Region	No. of Projects				Difference	
	Aug 2020 (A1)	May 2021 (M)	Aug 2022 (A2)	Aug 2023 (A3)	(3 years since Aug’20)	(last year since Aug’22)
Ayeyarwady	120	66	106	92	-28	-14
Bago	105	47	73	69	-36	-4
Chin	83	45	52	54	-29	2
Kachin	173	148	167	159	-14	-8
Kayah	97	51	58	56	-41	-2
Kayin	186	126	134	108	-78	-26
Magway	104	53	62	61	-43	-1
Mandalay	128	82	106	101	-27	-5
Mon	134	101	105	92	-42	-13
Nay Pyi Taw	53	19	25	24	-29	-1
Rakhine	192	136	142	140	-52	-2
Sagaing	98	62	96	79	-19	-17
Shan	203	96	132	124	-79	-8
Tanintharyi	112	72	98	68	-44	-30
Yangon	210	119	148	133	-77	-15
<b>*Nation-wide</b>	<b>814</b>	<b>608</b>	<b>712</b>	<b>689</b>	<b>-125</b>	<b>-23</b>

## Reporting by Project Focus

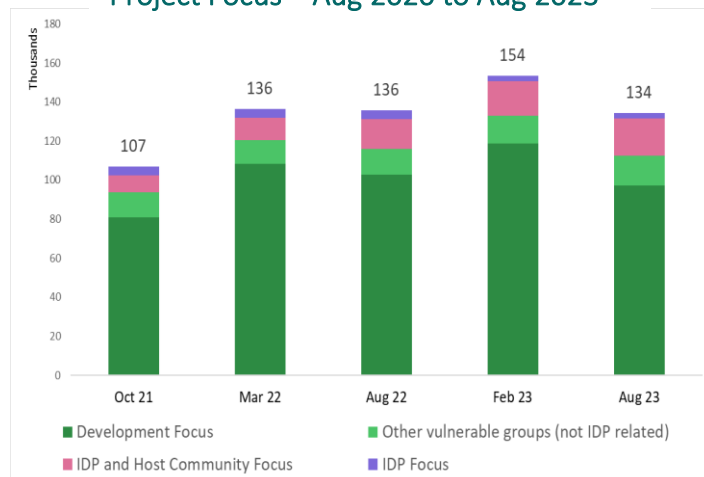
Development focused activities made up 72% of activities reported to the Aug'2023 MIMU 5W, with 5,482 less activities reported than in Aug'2022. Development-focused activities also made up the majority of the Ongoing activities (80%), followed by completed/ended activities (18%) and suspended activities (2%).

IDP and Host Community focused activities were the second most numerous, totalling 14% of the total activities reported in Aug'2023, with an 25% increase since Aug'2022 (3,849 more activities) and 9 more implementing agencies. Over the past 12 months, there has been a 25% increase in ongoing activities and 1.3 times decrease in those listed as suspended.

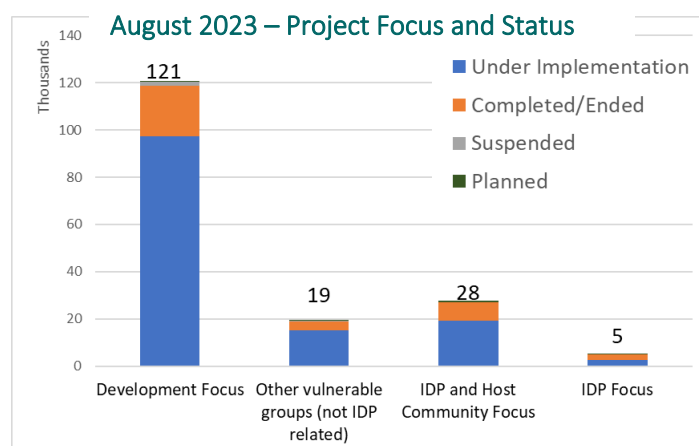
Activities with Other Vulnerable Groups (non IDPs) made up almost 11% of reported activities in Aug'2023. The number of reported activities increased by 17% despite 17 less implementing agencies over the past 12 months, but also a 14% increase in ongoing activities and 1.1 times less suspended activities.

Key finding is that activities which were solely IDP-focused increased by just 2% although ongoing activities were reported in 27 less camps and 127 less village tracts and towns over 12 months, with 19 less number of implementing agencies. There was also a 64% reduction in ongoing activities and 70% reduction in suspended activities in Aug 2023 compared to Aug 2022.

Project Focus – Aug'2020 to Aug'2023



August 2023 – Project Focus and Status



Project Focus	Aug 22 (Ongoing Projects)					Aug 23 (Ongoing Projects)				
	# of Organizations	# of VTs/Towns	# of Villages/Wards	No. of Camps	No. of Activities per location	# of Orgs	# of VTs/Towns	# of Villages/Wards	No. of Camps	No. of Activities per location
Development Focus	159	11,373	40,925		102,670	133	11,115	37,129		97,188
Other vulnerable groups (not IDP related)	96	2,612	5,228		13,250	79	2,050	4,118		15,135
IDP and Host Community Focus	58	1,685	4,696	154	15,274	67	2,034	6,281	173	19,123
IDP Focus	64	518	715	201	4,564	45	391	616	174	2,777
<b>Grand Total</b>	<b>224</b>	<b>12,085</b>	<b>44,850</b>	<b>203</b>	<b>135,758</b>	<b>181</b>	<b>11,875</b>	<b>41,152</b>	<b>206</b>	<b>134,223</b>

## Reporting by Sector and Area

As of Aug'2023, less Village tracts/towns were reached in 14 sectors compared to 3 years earlier in Aug'2020 – these included Livelihoods (5,197 less village tracts/towns in Aug'2023), WASH (1,714 less), Health (1,149 less), Environment (1,022 less), Governance (721 less) and infrastructure (380 less). At the same time, the number of VTs/Towns with ongoing activities increased in 7 sectors, namely Nutrition (activities in 872 more village tracts/towns), Agriculture (645 more), Food (387 more), Mine Action (361 more), NFI (139 more), Shelter (95 more) and Social Protection (8 more) compared to Aug 2020 5W round.

The reach increased particularly in 10 sectors over the past 12 months – mainly in Nutrition (590 more village tracts/towns), Agriculture (375 more), Education (322 more), Mine Action (287 more) and Food (209 more).

Ongoing activities were reported in 206 previously-established IDP camps<sup>1</sup> in Aug'2023. This was 10 less camps than 3 years previously in August 2020 and 3 more camps than 12 months ago, however the past 12 months saw an increase in reported activities in 7 sectors in the previously-established camps, most notably in the Food, Nutrition, NFI and Mine Action sectors.

<sup>1</sup> The MIMU 5W uses the CCCM camp list which included camps that were established prior to 2021 in Rakhine, Kachin and Shan States in this round.

## No. VTs/Towns and Camps with Ongoing activities by State/Region

State/Region	VTs and Towns				Camps			
	Aug 2020 (A1)	May 2021 (M)	Aug 2022 (A2)	Aug 2023 (A3)	Aug 2020 (A1)	May 2021 (M)	Aug 2022 (A2)	Aug 2023 (A3)
Ayeyarwady	1,952	1,933	1,943	1,890				
Bago (East)	532	455	564	604				
Bago (West)	639	588	630	658				
Chin	485	482	481	457				
Kachin	488	406	502	484	135	132	136	130
Kayah	84	72	84	62				
Kayin	394	368	394	394				
Magway	1,412	1,233	1,260	1,277				
Mandalay	1,234	1,113	1,182	1,235				
Mon	390	258	384	384				
Nay Pyi Taw	167	136	157	162				
Rakhine	966	814	946	817	46	42	32	35
Sagaing	1,641	1,451	1,602	1,554				
Shan (East)	155	127	130	134				
Shan (north)	716	618	661	743	35	29	35	41
Shan (South)	393	312	370	279				
Tanintharyi	285	134	244	209				
Yangon	557	484	551	532				
<b>Grand Total</b>	<b>12,490</b>	<b>10,984</b>	<b>12,085</b>	<b>11,875</b>	<b>216</b>	<b>203</b>	<b>203</b>	<b>206</b>
<b>% of total VTs/Towns and Camps in Myanmar</b>	<b>87%</b>	<b>77%</b>	<b>85%</b>	<b>83%</b>	<b>94%</b>	<b>89%</b>	<b>89%</b>	<b>99%</b>

## No. VTs/Towns and Camps with Ongoing activities by Sector

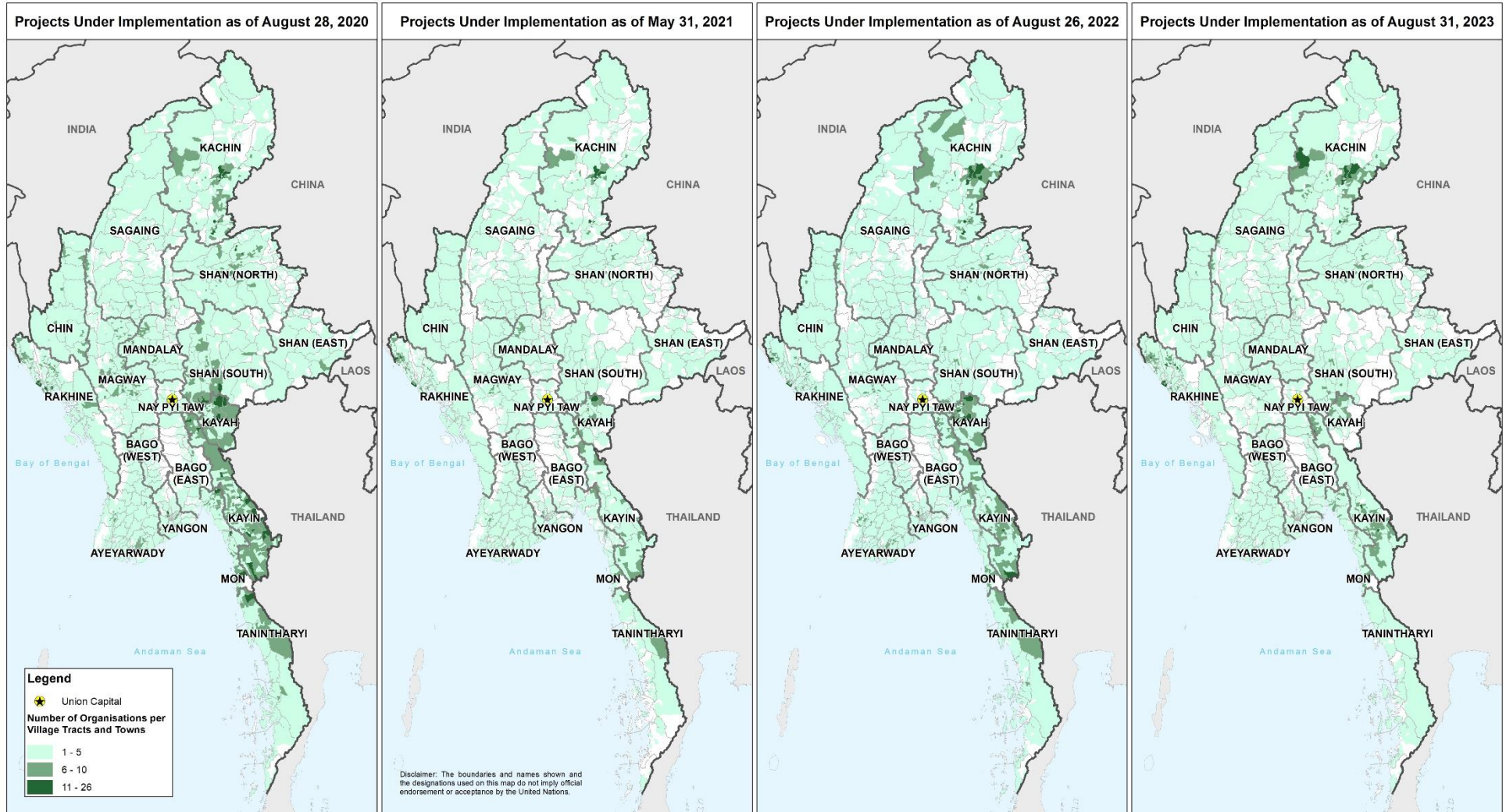
Sector	VTs and Towns				Camps			
	Aug 2020 (A1)	May 2021 (M)	Aug 2022 (A2)	Aug 2023 (A3)	Aug 2020 (A1)	May 2021 (M)	Aug 2022 (A2)	Aug 2023 (A3)
Agriculture	7,668	6,932	7,938	8,313	26	23	6	4
CCCM	163	81	56	5	163	154	189	48
Coordination	99	77	98	55				
Disaster Risk Reduction	254	206	245	122	11	3	2	1
Education	2,169	556	1,668	1,990	62	79	88	59
Environment	1,349	715	317	327				
Food	293	378	471	680	152	144	67	134
Governance	950	464	472	229	7		2	4
Health	5,468	3,398	4,631	4,319	161	111	131	119
Infrastructure	429	120	32	49		8	2	
Livelihoods	6,719	5,394	5,496	1,522	118	97	84	61
Mine Action	504	337	578	865	25	23	30	64
Non-Food Items	106	47	105	245	37	19	8	48
Nutrition	939	1,106	1,221	1,811	151	135	113	157
Peace Building/ Conflict Prevention	214	61	122	36	98	84	6	9
Private Sector Development	95	21	84	93			35	41
Protection	1,837	1,165	2,097	1,763	191	140	170	129
Responsible Tourism	22							
Shelter	120	83	56	215	157	155	44	15
Social Protection	73	28	82	81	19	16	15	2
WASH	2,359	482	733	645	127	151	123	64

For more information or clarification, see [MIMU's 5W products](#) and interactive dashboards or contact us: [Info.mimu@undp.org](mailto:Info.mimu@undp.org)

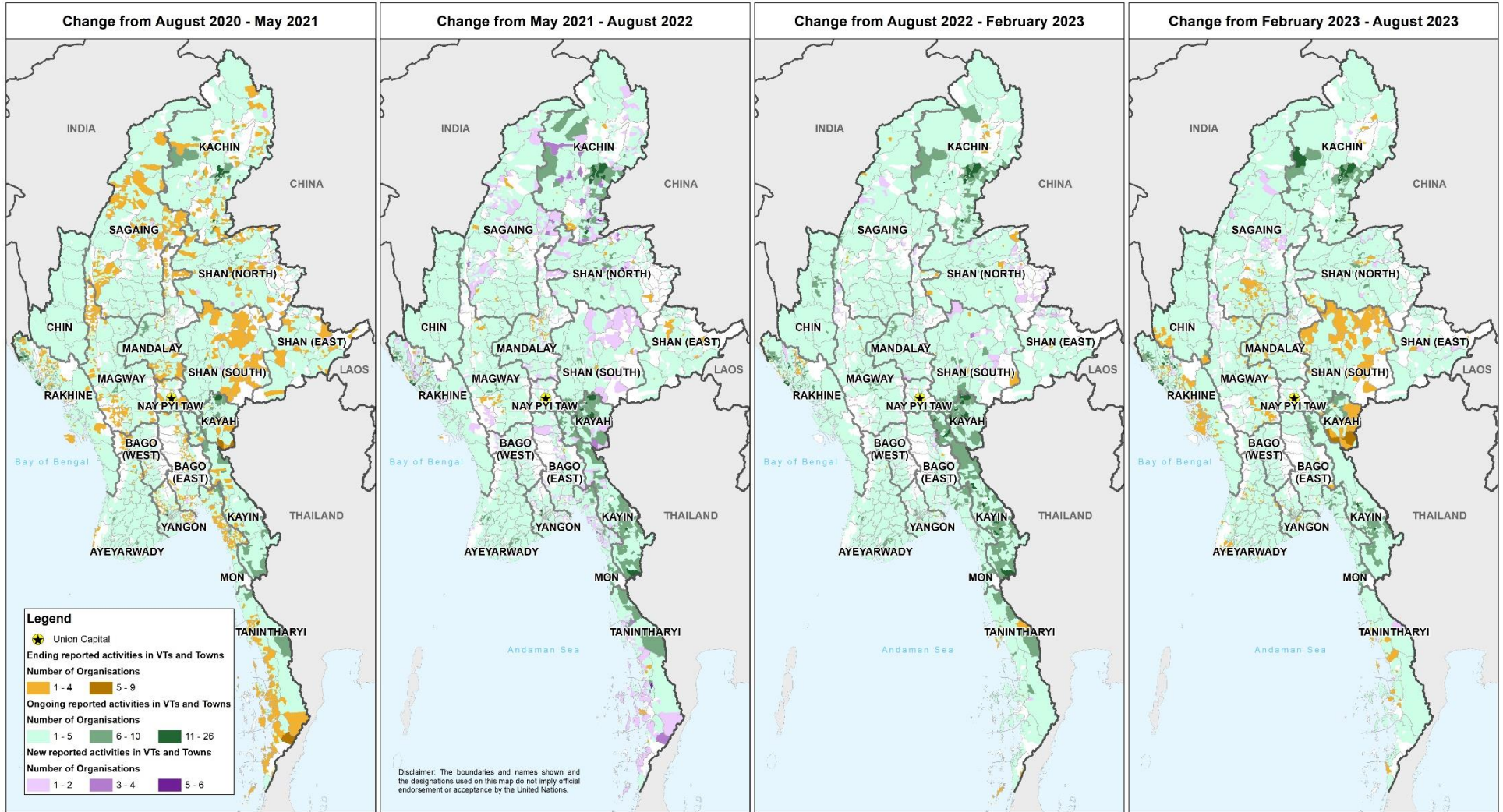


## Number of Organizations reporting Projects Under Implementation by Village Tract

These maps reflect the changing concentration of reporting organisations by area from 2020 to 2023. Note that this does not indicate the level of need or vulnerability and whether needs are met.



## Change in Reported Activities by Village Tract



The maps below show trends over time in terms of village tracts with newly established activities (purple colour), ongoing activities (green colour) and recently ended activities (orange colour).