



Change History of MIMU Pcode Version 9.4 vs 9.5

February 2024

Overview

The major changes between Version 9.4, released in May 2023 and the new [Version 9.5 February 2024](#) are mainly supported by Centre for Development and Environment (CDE) and field agencies as of 31st January 2024. **Pcode data for 1,562 villages were verified or updated:** 1,128 villages had their coordinates adjusted to the correct locations, coordinates for 280 villages were newly acquired and 154 new villages were added. The transliteration of all villages' names in Naga self-administered zone (352 villages) were modified with the support of Naga linguistic specialists.

Tanintharyi had the most updates with corrections to 796 villages, followed by Mon (285 villages), Ayeyarwady (106), Shan north (85), Shan south (75), Kachin (44), Yangon (31), Sagaing (23), Shan east (22) and Bago east and Magway (20 in each). States/regions with the least updates were Kayah (1 village), Mandalay (3), Kayin (7), Chin (8), Bago west (11), Rakhine (12) and Nay Pyi Taw (13).

State/Region	Modified Coordinates	Added Coordinates	New Village	Grand Total
Ayeyarwady	106			106
Bago (East)	16	4		20
Bago (West)	11			11
Chin	8			8
Kachin	33	11		44
Kayah	1			1
Kayin	7			7
Magway	13	7		20
Mandalay	2		1	3
Mon	233	41	11	285
Nay Pyi Taw	13			13
Rakhine	12			12
Sagaing	22	1		23
Shan (East)	19	3		22
Shan (North)	45	40		85
Shan (South)	51	24		75
Tanintharyi	505	149	142	796
Yangon	31			31
Grand Total	1,128	280	154	1,562

Modified Coordinates - corrected existing coordinates (Longitude and Latitude) with information from field colleagues

Added Coordinates – listed villages for which coordinates (Longitude and Latitude) were provided by field colleagues

New Villages - villages not previously listed with coordinates provided by field colleagues

The detailed listing can be found in the Excel file named "[MIMU PCode ChangeHistory Version9.4 to Version9.5 13Feb2024](#)" on the MIMU website.

With this new update the coverage of coordinates (and hence villages which can be mapped with names and coordinates) has reached 80% in this PCode Version 9.5. The map showing percentage of coordinates coverage at township level can be found at the end of the report.

Version	Total Active* Villages	Villages with GPS	% of Coordinates Coverage	Released in
9.5	66,613	52,865	79.4	Feb 24
9.4	66,459	52,435	78.9	May 23
9.3	66,351	51,997	78.4	Jan 21
9.2	66,358	52,022	78.4	Mar 20
9.1	66,329	51,737	78	Jan 20

Active - settlement classified as village by GAD as of January 2021 or reported by field sources

Summary of changes

1) New Villages

State/Region	Township	# of New Villages
Tanintharyi	Tanintharyi	31
Tanintharyi	Bokpyin	30
Tanintharyi	Myeik	22
Tanintharyi	Yebyu	19
Tanintharyi	Palaw	18
Tanintharyi	Kawthoung	15
Mon	Bilin	10
Tanintharyi	Dawei	4
Tanintharyi	Thayetchaung	3
Mandalay	Madaya	1
Mon	Chaungzon	1
Grand Total		154



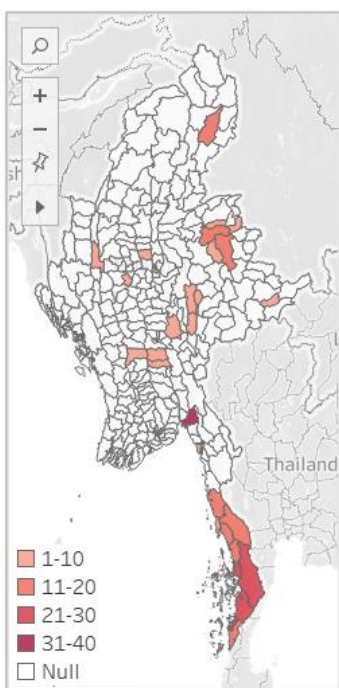
A total of 154 villages were newly added to the database in 11 townships in Tanintharyi, Mon and Mandalay.

Mainly in

- 1) Tanintharyi Township (31 villages)
- 2) Bokpyin Township (30 villages)
- 3) Myeik Township (22 villages)

2) Added Coordinates

State/Region	Township (Top 15)	# of Villages with newly added coordinates
Mon	Bilin	39
Tanintharyi	Bokpyin	29
Tanintharyi	Tanintharyi	25
Tanintharyi	Myeik	23
Tanintharyi	Thayetchaung	18
Shan (North)	Tangyan	16
Tanintharyi	Kawthoung	16
Tanintharyi	Dawei	14
Shan (North)	Lashio	12
Tanintharyi	Palaw	12
Kachin	Injyangyang	11
Tanintharyi	Yebyu	11
Shan (South)	Pinlaung	8
Shan (North)	Mongyai	6
Shan (South)	Hopong	6



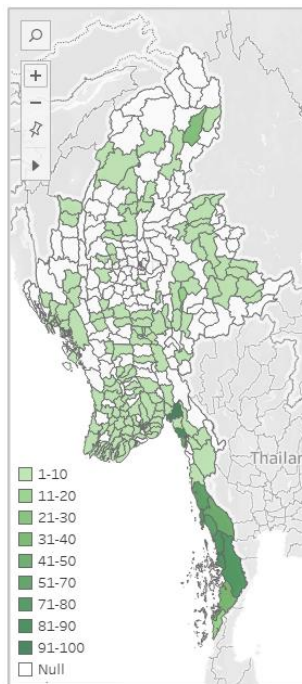
The coordinates of 280 villages in 28 townships of 9 states/regions were newly added.

Mainly in

- 1) Bilin Township (39 villages)
- 2) Bokpyin Township (29 villages)
- 3) Tanintharyi Township (25 villages)

3) Modified Coordinates

State/Region	Township (Top 15)	# of Villages with Modified coordinates
Mon	Bilin	93
Mon	Paung	89
Tanintharyi	Tanintharyi	79
Tanintharyi	Launglon	73
Tanintharyi	Palaw	73
Tanintharyi	Myeik	70
Tanintharyi	Yebyu	59
Tanintharyi	Thayetchaung	56
Tanintharyi	Dawei	44
Mon	Chaungzon	43
Tanintharyi	Bokpyin	35
Kachin	Injyangyang	27
Tanintharyi	Kawthoung	16
Shan (South)	Loilen	15
Shan (North)	Tangyan	10



The coordinates of 1,128 villages in 150 townships in all states/regions were modified.

Mainly in

- 1) Bilin Township (93 villages)
- 2) Paung Township (89 villages)
- 3) Tanintharyi Township (79 villages)

4) Number of Admin Units by State/Region (Pcode version 9.5 as of Jan 2024)

State/Region	District				Township				Town				Ward			Village Tract					Village				
	GAD	Field Sources	Delisted by GAD	Total	GAD	Field Sources	Delisted by GAD	Total	GAD	Field Sources	In City Area	Total	GAD	Delisted by GAD	Total	GAD	Field Sources	Delisted by GAD	Delisted (Field Sources)	Total	GAD	Field Sources	Delisted by GAD	Delisted (Field Sources)	Total
Ayeyarwady	6			6	26			26	45			45	302	1	303	1,920		48		1,968	11,861	263	505	60	12,689
Bago (East)	2			2	14			14	29			29	198		198	731		14		745	2,884	12	154		3,050
Bago (West)	2			2	14			14	23			23	130		130	686		7		693	3,616		50		3,666
Chin	4			4	9			9	20			20	72		72	463		8		471	1,342	143	31	2	1,518
Kachin	4			4	18			18	33			33	178		178	587	1	16		604	2,507	492	165		3,164
Kayah	2			2	7			7	11			11	52		52	74		6		80	510	10	196		716
Kayin	4			4	7			7	18			18	86		86	376		1		377	2,097	49	17		2,163
Magway	5			5	25			25	32			32	199		199	1,538		7		1,545	4,790		115		4,905
Mandalay	7			7	28			28	30		5	35	282		282	1,414		7		1,421	4,799	112	64		4,975
Mon	2			2	10			10	17			17	106		106	367		19		386	1,143	16	158		1,317
Nay Pyi Taw	2			2	8			8	8		1	9	58	1	59	187		11		198	796	51	67	2	916
Rakhine	5			5	17			17	28			28	195		195	1,036		16		1,052	3,702	46	454	1	4,203
Sagaing	11			11	37			37	50			50	272		272	1,758		22	1	1,781	5,993	130	426	3	6,552
Shan (East)	3	1	1	5	10	5		15	18	5		23	80		80	192	26	7		225	2,906	645	909		4,460
Shan (North)	6	3	2	11	24	21		45	32	22		54	188		188	947	156	66		1,169	6,104	1,165	1,258	1	8,528
Shan (South)	3			3	21			21	37			37	250		250	421		3		424	4,773		1,186		5,959
Tanintharyi	3			3	10			10	18			18	90		90	270				270	1,255	203	11		1,469
Yangon	4			4	45		1	46	20		30	50	743	1	744	621		16	1	638	2,143	55	74	3	2,275
Grand Total	75	4	3	82	330	26	1	357	469	27	36	532	3,481	3	3,484	13,588	183	274	2	14,047	63,221	3,392	5,840	72	72,525

GAD – General Administration Department, Ministry of Office of the Union Government (Jan 2021)

Field Sources – Organizations implementing projects locally

Status of Villages with GPS Coordinates

As of February 2024

