

# WON-GEN Member Mapping Report

September 2014-March 2015

Prepared by: Nang Phyu Phyu Lin  
Member Mapping Consultant



## **CONTENTS**

### **Acknowledgements**

### **Executive Summary**

### **List of Abbreviations**

#### **1. Introduction**

- 1.1 Overview of National Strategic Plan for the Advancement of Women (2013-2022)
- 1.2 Background of WON-GEN Core Team
- 1.3 Objective of mapping study

#### **2. Methodology**

- 2.1 Mapping Methodology
- 2.2 Mapping Process

#### **3. Limitations**

- 3.1 Member awareness on own organizations
- 3.2 Inactive members in networks
- 3.3 Time constraints
- 3.4 Data entry technical issue based on limited information

#### **4. Member Mapping Findings**

- 4.1 Who works in which NSPAW area
- 4.2 WON/GEN members and partners' implementation location per NSPAW area
- 4.3 Findings on NSPAW's four approaches
- 4.4 Detailed information on implementation of NSPAW area
- 4.5 Target groups per NSPAW area
- 4.6 Key stake holders information per NSPAW area
- 4.7 Members' partner information
- 4.8 Members' consortium information
- 4.9 Donor information against NSPAW area
- 4.10 Gender issue per NSPAW area

#### **5. Conclusions and Recommendations**

- 5.1 Members suggestions for NSPAW implementation
- 5.2 Recommendations

**Annexes**

- Annex 1      WON/GEN member mapping questionnaires
- Annex 2      WON-GEN member's NSPAW implementation area by Township.
- Annex 3      Name list of WON-GEN organizations and their partner implementation location per NSPAW area.
- Annex 4      Detailed information of WON/GEN members' activities per NSPAW approach for each NSPAW area.
- Annex 5      WON/GEN members implementation against NSPAW indicator
- Annex 6      Target Group per NSPAW area
- Annex 7      Key Stakeholders list per NSPAW area.
- Annex 8      Members' Partner list per NSPAW area
- Annex 9      Members' Consortium Information
- Annex 10     Members' Donor Information
- Annex 11     WON-GEN members contact information

## **ACKNOWLEDGEMENTS**

Heartfelt appreciation goes to WON-GEN core team and mapping coordination assistant Ms Phyo Thit Sar Kyaw for her generous support for this Mapping Report, as well as all the WON and GEN members who have given their time to share with us their organization information and opinions.

## **EXECUTIVE SUMMARY**

The Won-Gen mapping report was commissioned by the WON-GEN core team and was funded by CARE International in Myanmar. WON and GEN are known as women's rights focused networks which aim to improve the status of women and girls in Myanmar as well as the development and implementation of enabling system, structures and practices for gender equality and the realization of women's rights in Myanmar.

The report is based on data collected in the period of September 2014 to January 2015 from WON and GEN members. The objective was to identify WON/GEN members existing initiatives in the NSPAW's key priority area and their approaches on contribution towards the implementation of NSPAW. Moreover, the report also identifies the gaps and support needed for the implementation of NSPAW.

The findings of this report reveal that the works of WON-GEN members are focusing more in Women, Education and Training, Women and Human Rights, Women and Health and Women's and Livelihood but less focus on the areas of Women and the Media, Institutional Mechanisms for the advancement of women and the Girl Child.

Implementation of above focused areas are being done more in Northern Shan State, Yangon, Bago, Ayeyarwady and Kayah by WON members whereas GEN members are implementing their work in Yangon, Bago, Ayeyarwady, Kachin and Northern Shan state areas. However, the finding shows that less work on implementation are being done by both WON AND GEN members in Dry Zone, Sagaing, Tanintharyi and Eastern Shan State. A directory with listed names of WON, GEN members and their partners, NSPAW Focus area and geographical implementation area could be found in Table 3.

Four approaches such as Awareness Raising, Implementation, Research and Surveys, and Budget and Policy Making could be found in NSPAW documents. Out of four approaches, both WON and GEN members are applying awareness raising and implementation approaches more than the other two. The main targeted groups of WON and GEN can be classified into eight different groups: General Community (villagers), Women group, Children, High Risk & Vulnerable group, CBO/NGO group, leaders, Political Party and Government. Donors for WON and GEN members are mainly from Donor Agency, Embassy, UN agencies, INGOs, LINGOs, Network, Women Groups, Religious Organizations, Private Sectors, few private donors and self funded.

The report concludes with the findings of gender issues per NSPAW area as identified by members, and recommendations for WON and GEN about how to contribute to NSPAW implementation effectively.

## List of Abbreviations

BCC	Behaviour Change Communication
CBO	Community Based Organizations
CEDAW	Convention on the Elimination of all forms of Discrimination Against Women
CSO	Civil Society Organizations
CU	Coordination Unit
DSW	Department of Social Welfare
DOH	Department of Health
ECCD	Early Child Care Development
GEN	Gender Equality Network
HBC	Home Based Care
INGO	International Non-Government Organization
LNGO	Local Non-Government Organization
MMCWA	Myanmar Mother and Child Welfare Association
MNCWA	Myanmar National Committee for Women's Affair
MWAF	Myanmar Women's Affair Federation
MWEA	Myanmar Women Entrepreneur Association
NSPAW	National Strategic Plan for the Advancement of Women
PLHIV	People Living with HIV
SHG	Self Help Group
TRP	Technical Resource Person
UMFCCI	Union of Myanmar Federation of Chambers of Commerce & Industry
VDC	Village Development Committee
VSLA	Village Saving and Loan Association
WON	Women's Organization Network
YMCA	Young Men Christian Association
YWCA	Young Women Christian Association

## 1. Introduction

### (1.1) Overview of the National Strategic Plan for the Advancement of Women (NSPAW) 2013 – 2022

The National Strategic Plan for the Advancement of Women 2013 – 2022 (NSPAW) was launched by the Myanmar National Committee for Women's Affairs on the 3rd October 2013. NSPAW is a 10-year strategy document that outlines an integrated Government approach to improving the situation of women and girls in Myanmar. It is a broad strategy document articulating the need for research and surveys, awareness raising, implementation and budget and policy-making in each of the 12 priority areas.

The main objective of the Plan is that 'All women in Myanmar are empowered and able to fully enjoy their rights with the support of the Government of the Republic of the Union of Myanmar. Enabling systems, structures and practices are created for the advancement of women, gender equality, and the realization of women's rights.'

The National Strategic Plan for the Advancement of Women will be implemented by Government agencies, National and International non-Government organizations, UN agencies, private agencies, Civil Society Organizations and individual donors through the contribution of financial, technical and material assistance.<sup>1</sup>

### (1.2) Background of WON-GEN Core Team

#### Women's Organizations Network (WON)

The Women's Organizations Network of Myanmar (WON) is a non-governmental civil society network of women's departments and organizations. It was initiated and firstly organized by Thingaha Gender Working Group in August 27, 2008 together with involvement of 9 local women's organizations. The primary purpose was to create a space for sharing information; experiences, mutual learning and creating collaborative activities among local women's organizations that are involved in the work of cyclone Nargis emergency response.

After Nargis, WON organized several women's forums and seminars with the issue based. Moreover, WON advocates to the key stakeholders for the women facing issues and operating campaigns to raise awareness of women situation to the public. WON thrives to bring positive changes to the present social structure and thereby improve the status of women and girls in Myanmar.<sup>2</sup> Currently, there are 41 member women's organizations at network (36 organizations and 5 networks).

#### Gender Equality Network (GEN)

The Gender Equality Network (GEN) formally known as Women Protection Technical Working Group (WPTWG) is an inter-agency network, comprising approximately 112<sup>3</sup> national and international

---

<sup>1</sup> National Strategic Plan for the Advancement of Women (2013-2022)

<sup>2</sup> WON profile

<sup>3</sup> as of September 2014

NGOs, civil society organisations and networks, and technical resource persons. WPTWG was formed aftermoth of Cyclone Nargis to focus on multi-sectoral and crosscutting issues faced by women in cyclone-affected areas. In 2011 the coordination unit was established and members renamed WPTWG, the Gender Equality Network (GEN). The overall objective of GEN is to facilitate the development and implementation of enabling systems, structures and practices for the advancement of women, gender equality, and the realization of women's rights in Myanmar.

The Gender Equality Network (GEN) has reached a new stage of impact and evidence-based advocacy and continues to demonstrate that, through the commitment and efforts of its wide member base, substantial progress and positive impacts are being made to the gender context in Myanmar.<sup>4</sup> GEN provided technical assistance to the development of National Strategic Plan for Advancement of Women in collaboration with Department of Social Welfare. Over the past two years GEN has carried out two formative research studies, Behind the Silence: Violence against women and their Resilience, Myanmar, and, Social Norms and Cultural Practices research, for evidence based advocacy. GEN has also led public campaigns to promote gender and women's rights awareness through, for example, International Women's Day and 16 Days of Activism campaigns.

### **WON-GEN Core Team**

WON and GEN Steering Committee members and the respective coordination units had a meeting on 16<sup>th</sup> July 2014 at Akhaya Office to discuss on how best both networks can fully engage with the Gender Equality and Women Empowerment sectoral working group (GEWE SWG) to implement NSPAW. GEWE SWG is chaired by DSW and co-led by UNFPA and French Embassy. It was decided that all members of both networks working on gender issues should be able to fully participate in implementation of NSPAW and should therefore a core team must be formed to contribute to NSPAW implementation that could complement the work of GEWE.

WON-GEN core team was formed with eight members comprising 2 SC and 1 CU staff from each network and 2 organizations which are members of both WON and GEN. 1 CU staff from GEN offers coordination assistance for the WON-GEN core team.

WON-GEN core team developed a strategy to engage CSOs, NGOs and INGOs in the implementation of the NSPAW, which includes mapping members' activity and developing user-friendly NSPAW IEC materials.

### **(1.3) Objective of member mapping study**

The main objectives of mapping WON-GEN members' activity to contribute towards National Strategic Plan for Advancement of Women (2013-2022) are as follows:

- To identify CSO, NGO and INGO current approaches to contribute to the implementation of NSPAW
- To identify and map existing initiatives being carried out by members of WON and GEN in the NSPAW's key priority areas, and other gender and women's rights initiatives if applicable
- To identify coverage, and to explore the gaps and support needed for the implementation of NSPAW
- To identify key stakeholders who are likely to actively support the implementation of NSPAW including donors, various ministries, other networks, the private sector and political parties.

---

<sup>4</sup> GEN's profile and 2014 annual report

## 2. Methodology

### (2.1) Mapping Methodology

The data was collected through primary data collection using interview questionnaire and a review of secondary data.

The interview questionnaire was developed by a consultant with the approval of the WON-GEN core team to collect primary data. To simplify the data collection and analysis, four types of questionnaires were developed according to the nature of different member types:

1. Questions for networks
2. Questions for direct implementation organizations
3. Questions for both direct implementation organisations and partners
4. Questions for organisations who work with partners only.

The questionnaire was designed to obtain general information about the organization activities against NSPAW area, their target group and key stakeholders, gender issues as well as suggestions for effective implementation of NSPAW. The questionnaire that was used for collecting data can be found in Annex 1.

### (2.2) Mapping Process

- WON-GEN core team hired a mapping consultant and coordination assistant.
- Mapping questionnaires and information letters regarding mapping exercises for members were drafted by the consultant in the second week of September 2014.
- A pilot test was conducted with two GEN members (CARE and Student Christian Movement) for revising the questionnaires. Trocaire and Oxfam also contributed to fine tuning the questionnaires.
- As of September 2014, WON had 41 organizations and network members and GEN had 112 members, comprising national and international NGOs, civil society organisations and networks, and technical resource persons (LNGO/CSO-49, ING-33, TRP-30).
- As technical resource persons are individual members, rather than organizations they were not included in this mapping exercise. In addition, eight local organizations are both WON and GEN members. To avoid double counting of those eight organizations, they are counted under WON member's list only. 6 GEN members (3 INGO and 3 LNGOs) were not included for interview due to reasons as such as some are now inactive and no contact with focal person. Hence, the total number of organisations from which data was collected across WON and GEN is 109 (WON-41, GEN-68).

	Direct Implementation	Both DI & Partner	Work with Partner only	Network	Total Number
WON	28	8	0	5	41
GEN	20	37	9	2	68



- In October, the consultants invited active members of WON and GEN to participate, and explained the questionnaire, providing guidelines on how to fill it in by themselves. A total of 23 organizations (GEN-14, WON-9) provided their organization data.
- Most of the interviews were done in person by the mapping consultant and the coordinating assistant, with a few done through phone as some of the focal persons were travelling and some of were are not based in Yangon.
- The data collection process started from the second week of September 2014 and was completed in the first week of January 2015.
- The data entry process took two months and data analysis was done in the first and second week of March.
- The draft report was submitted to the WON-GEN core team at the end of March 2015 and feedback was received from the WON-GEN core team.
- Findings from the mapping exercise was shared to WON and GEN members in the first week of April, 2015.
- The final report was submitted in the last week of May, 2015.

### **3. Limitations**

#### **(3.1) Members limited awareness of their own organizations and lack of systematic data gathering by members**

Most of the focal persons from each organization were able to provide the required information but some were not. Although the consultant team did follow up during the data collection process, some never replied. Some INGOs have so many activities and programs that one focal person could not provide all necessary information. Therefore, follow up activities were needed and in some cases the follow up activities were not successful, and questions remained unanswered. In some cases data is not always gathered systematically for all network members at local state and division levels.

#### **(3.2) Inactive members in network**

For various reasons, there are inactive members in both networks and in such instances, it was difficult to gather sufficient information.

#### **(3.3) Time Constraints**

Due to busy schedules of members, there were significant time constraints on data gathering.

#### **(3.4) Data entry technical issue based on limited information**

Data entry software was developed by an IT technician using Microsoft Access. This software works best with complete accurate data and information e.g. implementation on township, timeframe, target group etc. In some instances data entry and subsequent analysis was challenged due to an absence of information given by various organisations.

## 4. Mapping Findings on Members Work in NSPAW Areas

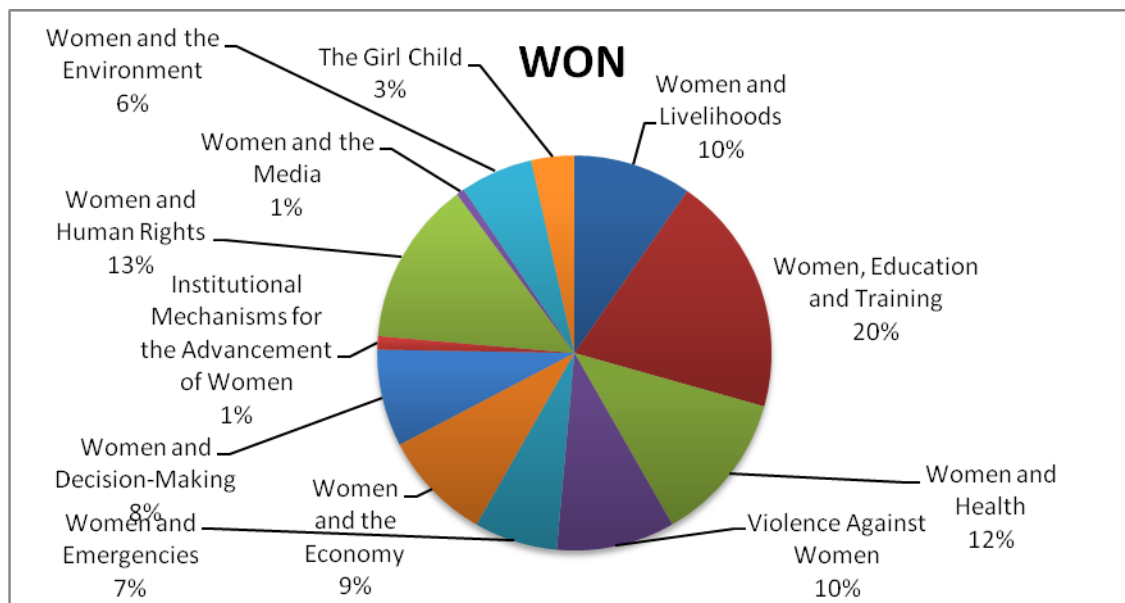
### (4.1) Members Working in NSPAW AREA

The National Strategic Plan for Advancement of Women targets the key areas that affect women's lives, and indicates practical ways to address the issues that Myanmar women are experiencing. This plan is based on 12 Priority Areas of the Beijing Platform for Action and CEDAW. The member mapping exercise explores the information of who (member) is working in which NSPAW area.

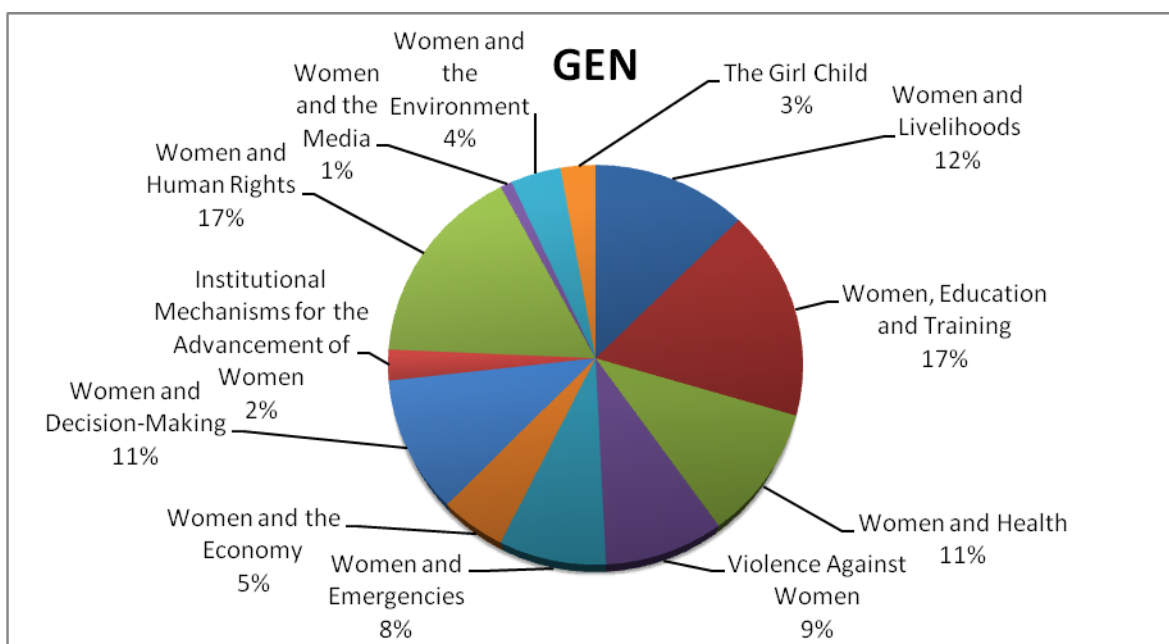
**Table 1: Who works in which NSPAW areas?**

#	NSPAW Area	GEN	WON	Total
1	Women and Livelihoods	40	44	84
2	Women, Education and Training	55	89	144
3	Women and Health	34	56	90
4	Violence Against Women	29	44	73
5	Women and Emergencies	26	31	57
6	Women and the Economy	16	41	57
7	Women and Decision-Making	35	36	71
8	Institutional Mechanisms for the Advancement of Women	8	5	13
9	Women and Human Rights	53	61	114
10	Women and the Media	3	3	6
11	Women and the Environment	13	27	40
12	The Girl Child	9	16	25

Note: The number represents total number of on going activities done by member organizations.



**Figure (1) WON members activities per NSAW areas**



**Figure (2) GEN members activities per NSAW areas**

From Table (1), Figure (1) and (2), we can observe the five most popular NSPAW areas and the three least popular NSPAW areas which are now being implemented by WON and GEN members.

**The top five implementing NSPAW areas are:**

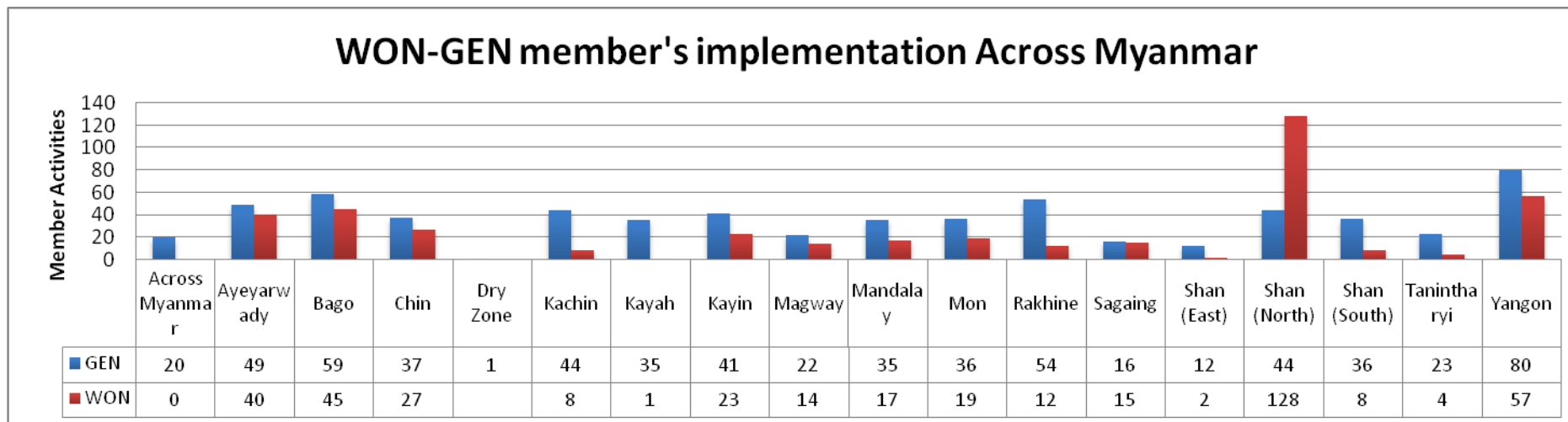
#	WON	GEN
1	Women, Education and Training	Women, Education and Training
2	Women and Human Rights	Women and Human Rights
3	Women and Health	Women and Livelihoods
4	Women and Livelihoods	Women and Decision Making
5	Violence Against Women	Women and Health

Interestingly the three least implemented NSPAW areas are similar between WON and GEN members. Very few members of WON and GEN are working on Women and the Media, Institutional Mechanisms for the Advancement of Women, and, the Girl Child.

This finding indicates that although members of WON and GEN are working on Women and Human Rights, and, Women and Decision Making at community level, there is still a gap in work at the National level on Institutional Mechanisms for the Advancement of Women. In addition, more advocacy work is needed for policy making.

**(4.2) WON-GEN member implementation locations per NSPAW area.**

Figure (3) illustrates the implementation location per NAPAW area of WON-GEN member and their partner activities. It clearly describes which members are working on different areas. The numbers in figure (3) also represent WON/ GEN members and their partners' activities which are not office based in those areas. Across Myanmar indicates organization's activities are implemented across Myanmar and where the beneficiaries are from across Myanmar.



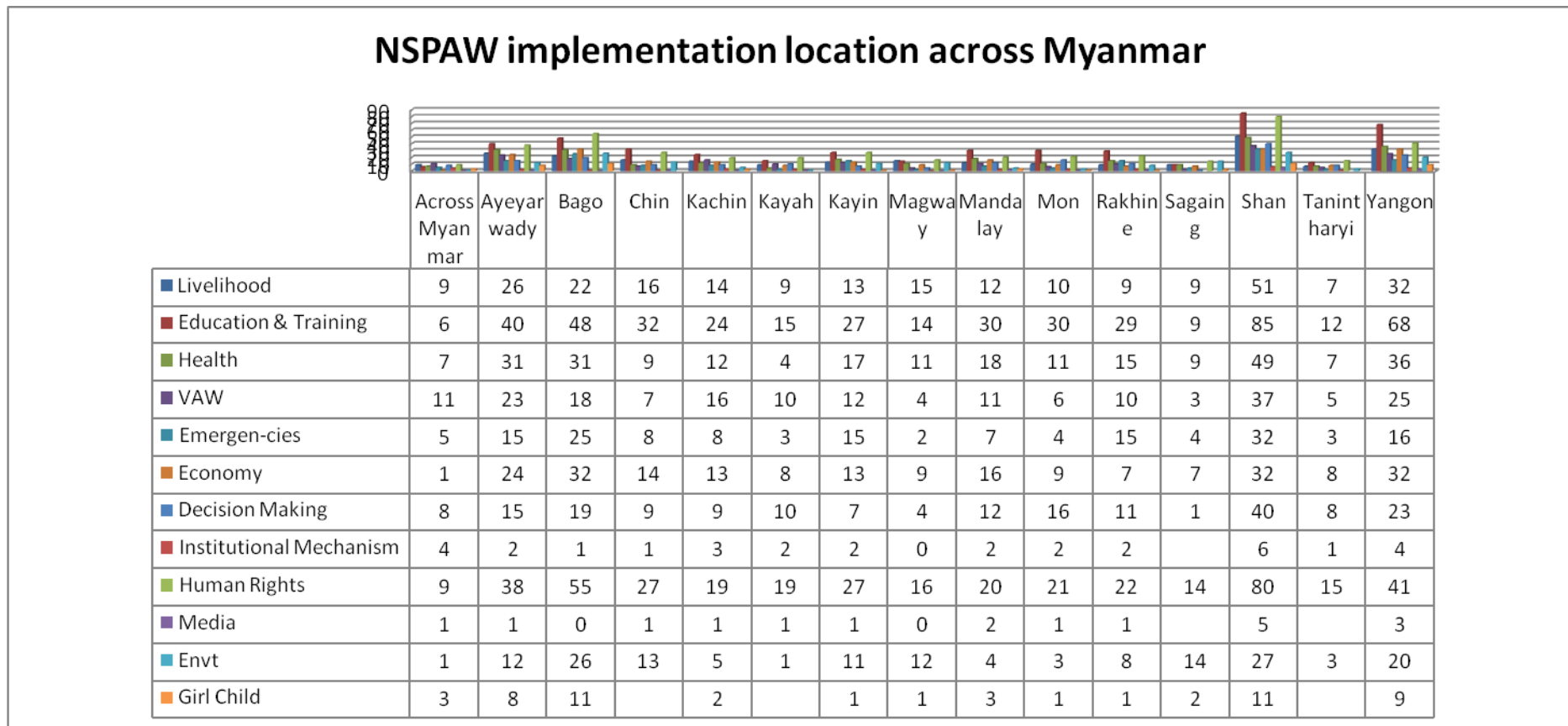
**Figure (3) WON-GEN member and partners' implementation location**

WON's activities in Northern Shan are found highest as Northern Shan Sate Network (WON) is located in Lashio and they have 14 members' organizations implementing development activities in Northern Shan State. Therefore, their activities makes up to a total number of 128 out of 140. The top five-implementation areas of WON members and their partners are Northern Shan, Yangon, Bago, Ayeyarwady and Kayin. GEN members and their partners are mainly implementing in Yangon. The top five-implementation areas of GEN members and their partners are Yangon, Bago, Rakhine, Ayeyarwady, Kachin and Northern Shan.

Some GEN members and partners work across Myanmar especially on awareness raising activities but no WON members are working on it. Awareness raising activities are being implemented across Myanmar as the organization activities are not based in only one location but move around if there is demand, as well as participants are from various places across Myanmar. Less works are being implemented by both WON

and GEN members in the Dry Zone, Sagain, Tanintharyi and Eastern Shan State. Detailed information about location up to township level can be seen in **Annex 2: NSPAW Implementation by Township.**

The following figure (4) demonstrates WON and GEN member's implementation location per NSPAW area. The detailed information of the WON/GEN members and partners organization name list can be found in **Annex 3: Name list of WON-GEN and their partner organizations' implementation location per NSPAW area.**



### **(4.3) Findings on NSPAW's Four Approaches**

The National Strategic Plan for the Advancement of Women (2013-2022) identifies four approaches to implement each area:

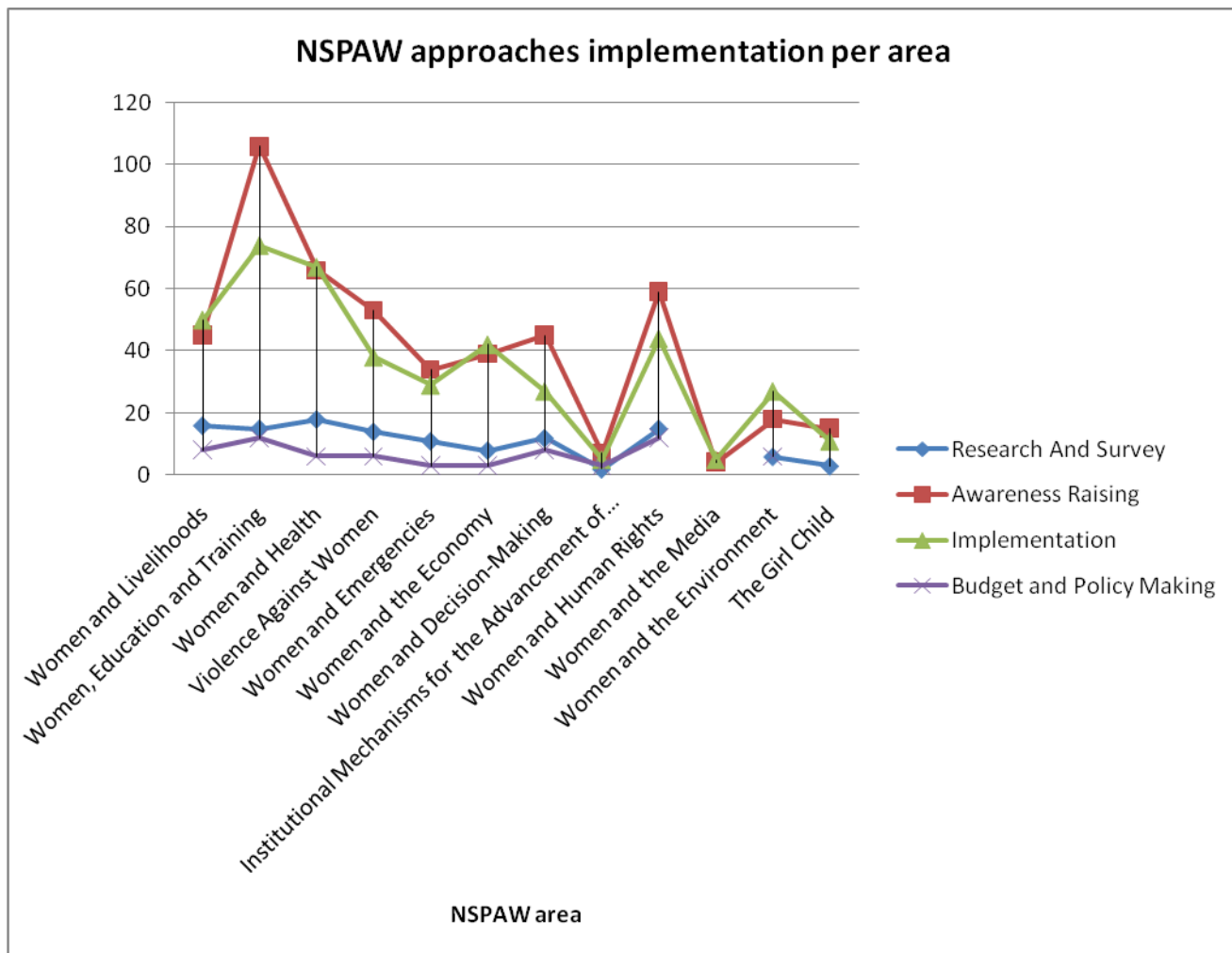
1. Research and Surveys
2. Awareness Raisings
3. Implementation
4. Budget and Policy Making

The findings demonstrate that almost all member organizations are working more on awareness raising and implementation. It was found that research and surveys, and, budget and policy-making approaches are applied less by member organizations.

According to the data collected, most organizations are working on Women, Education and Training; Women and Health; Women and Human Rights with awareness raising approaches, but there is little awareness raising on Women and the Media and Institutional Mechanisms for the Advancement of Women.

None of the member organizations work on policy making for Women and the Media, and, The Girl Child. The organizations' work on policy making is more in the Women, Education and Training, Women and Human Rights, and, Women and Livelihood.

Many organizations do research on Women and Health, Women and Livelihoods, Women, Education and Training, Women and Human Rights and Violence against Women. However, only very limited research and surveys on Institutional Mechanisms for the Advancement of Women and the Girl Child have been done.



**Figure (4) NSPAW four approaches application per NSPAW area**

The findings clearly show that the responsible person from WON and GEN need to mobilize their members to consider more research and survey, and policy making as implementation activities are needed to achieve greater impact.

Detailed information about activities of four approaches per NSPAW area can be found in Table 3. Members did research and survey mostly for internal used but sometimes carried out research for advocacy purposes. Members use awareness raising and implementation approaches more than the other two approaches. Members need to involve more in policy making both at local and national levels. The data can be seen as compiled data rather than individual organization activities.

Detailed information on members' activities per NSPAW approaches can be seen in **Annex 4: Detailed information of WON/GEN members' activities per NSPAW approach for each NSPAW area.**

#### **(4.4) Detailed information on implementation of NSPAW area**

The National Strategic Plan for Advancement of Women has 12 critical areas that affect women's life and there are four approaches to implement each area. Under each approach, there are indicators to measure implementation milestones. This mapping exercise investigates the current situation of the members of WON and GEN, implementing against indicator. The detailed indicators per approach for each NSPAW area can be found in the National Strategic Plan for the Advancement of Women (2013-2022). Please review these section findings in **Annex 5: WON-GEN members implementation against NSPAW indicators** for further details. The findings of this study show that members are not fully aware of all the NSPAW indicators. Members tend to focus on their own program and project indicators. Some project indicators match with NSPAW indicators but some are not. Especially indicators about Government responsibility and advocacy are still missing to implement.

Some highlights from the analysis on this section include:

- Whilst fewer members are working on Violence against Women (VAW), all the indicators were matched with member work and activities, illustrating their commitment to and deep understanding of VAW.
- Most of the indicators under the Women and Livelihood area are matched except policy-making indicators.
- Very few indicators of Women and the Media area are matched.
- Interestingly none of the indicators of Institutional Mechanism for the Advancement of women are matched.
- WON and GEN need to raise awareness of all the indicators of the 12 NSPAW areas for effective implementation of the plan.



#### **(4.5) Target groups per NSPAW area**

In general, target groups can be classified into eight groups: General Community, Women, Children, High Risk & Vulnerable group, CBO/NGO group, Leader, Political Party and Government. All these eight-target groups are working on areas such as Women, Education and Training, Violence against Women, Women and Decision Making, Women and Human Rights.

According to the data collected, noticeably there are less target groups for Women and the Media, Institutional Mechanisms for the Advancement of Women and the Girl Child as there is very few organizations who are working on those issues.

There are very few Government agencies as target group rather than members working with Government as Key Stakeholders. The target groups which WON GEN members mainly work with are as follows: DSW staff, Government School teacher, Doctors, Nurses, GAD, Member of Parliament, Council of Minister, Government Ministries such as Ministry of Education, Ministry of Finance, Ministry of National Planning, Ministries of Social Welfare, Relief and Resettlement, State Government etc. It is observable that WON and GEN members need to extend their collaboration with other Government ministries and departments in future for effective implementation of NSPAW.

WON-GEN member engagement with political parties is found only in five NSPAW areas: Women, Education and Training, Violence Against Women, Women and Emergencies, Women and Decision Making and Women and Human Rights. It would be great if members of WON and GEN target political parties for Institutional Mechanisms for the Advancement of Women, Women and the Media and The Girl Child as well.

The general community, women, children, high risk and vulnerable, CBO/NGO/SHG groups are targeted in all NSPAW area except Women and the Media and Institutional Mechanism for the Advancement of Women. Detailed information of target groups can be found in ***Annex 6: Target Group per NSPAW area***

#### **(4.6) Key stakeholder's information per NSPAW area**

Key stakeholders are individuals, groups or organizations who have interest or concern in the development project or program. Stakeholders can affect or be affected by the organization or project actions, objectives and policies.

Key stakeholders of members can be categorized into nine groups: Community, Government, Local Authority, NGO/CBO, Political Party, Media, Resource Person, Private Sector and UN agencies.

The Community, Government, Local Authority and other NGO/CBO are key stakeholders of most NSPAW area expect from the least implementing three areas: The Institutional Mechanism for the Advancement of Women, Women and the Media and the Girl Child. The detailed information of Key Stakeholder list can be found in ***Annex 7: Key Stakeholders List per NSPAW Area***.

The findings can be concluded as most of the member organization work with community, Government, Local Authority and other NGOs as key stakeholders.

#### **(4.7) Members' partner information**

The findings indicate that both WON and GEN members are working with partners. Partners, which can be referred to as local organizations who support National NGOs, international NGOs, and CSOs to implement their work in local areas. There are 8 members of WON working with partner and also 37 members of GEN working with partners. The name list of organization working with partners only may not be seen in all finding points rather their partners' name can be seen.

Partners organizations can be categorized as follows: Funding agency, INGO, LINGO, CBO, Mother Unit e.g. Myanmar Council of Churches, Baptist Association and volunteer groups. Most of the WON members are faith-based organization so they are partnering with their respective religious organization more. Detail information of members' partner information can be seen in ***Annex 8: Members' Partner list per NSPAW area***

**(4.8) Members' Consortium Information**

Nowadays development organizations form consortia with the objective of participating in a common activity or pooling their resources for achieving a common goal and produce greater impact.

Members involve in different consortium with different major focus activities. Their main activities can be categorized as follows:

#	Main focus Activity	Name Of Consortium
1	DRR and Emergency response	<ul style="list-style-type: none"> <li>▪ Disaster Preparedness</li> <li>▪ Emergency Response</li> <li>▪ BRACED (Baydar)</li> <li>▪ DIPECHO Consortium</li> <li>▪ Myanmar Consortium Disaster Risk Reduction (MCDR)</li> </ul>
2	Environment	<ul style="list-style-type: none"> <li>▪ Pyit Taing Htaung</li> <li>▪ Environment (Fishery, Environment and Livelihood)</li> </ul>
3	Land Rights	<ul style="list-style-type: none"> <li>▪ Keikhtilar People Honorary Network</li> </ul>
4	Livelihood (Agriculture, Livestock, Market Development, Nutrition, microfinance etc) Community Forestry	<ul style="list-style-type: none"> <li>▪ Tet Lan Sustainable Food Security and Livelihood Program</li> <li>▪ Phase In</li> <li>▪ Baptist Federation</li> </ul>
5	HIV/AIDS	<ul style="list-style-type: none"> <li>▪ Global Fund (NGO consortium on HIV and AIDS in Myanmar)</li> </ul>
6	Organizational Development	<ul style="list-style-type: none"> <li>▪ Yarza Thitsar</li> </ul>
7	Capacity Building and Advocacy	<ul style="list-style-type: none"> <li>▪ Promoting Political Awareness of Communities and Civic Education of their Representatives (PACER)</li> <li>▪ Thadar Consortium</li> <li>▪ Consortium (Gender, Leadership capacity building)</li> </ul>
8	Education	<ul style="list-style-type: none"> <li>▪ Myanmar Education Consortium (MEC)</li> </ul>
9	Interfaith	<ul style="list-style-type: none"> <li>▪ Myittar Set Wyne</li> </ul>

Some member organization involve in the same consortium but the way they provide information differs based on their awareness level of that kind of consortium. For instance two or three member organizations participate in Tet Lan consortium but the way they provide information is different. Some provide detailed activities and some provide just a little information about that consortium. Please see detail information of members' consortium in the **Annex 9: Members' Consortium Information**

#### **(4.9) Donor Information for NSPAW Area**

The findings show that donor of WON and GEN members are mainly from Donor Agency, Embassy, UN agencies, INGOs, LNGOS, Networks, Women Group (e.g. Global Women), Religious Organizations, Private Sectors, few private donors and self funded. The major donors found from the findings are as follows:

Donor Agencies: AUSAUD, 3 MDG, Swiss AID, US AID, Norad, European Union (EU), Europe Commission, Norwegian Ministry of Foreign Affairs

Embassy: British Embassy, American Embassy, Newzeland Embassy,

UN Agencies: UNAIDS, UNDP, UNFPA, UNICEF, UNOPS

INGO/LNGS: Oxfam, Trocaire, Save the Children, Norwegian People Aids (NPA) etc.

Currently members got funding from Norwegian People Aids (NPA) for 11 NSPAW areas except from Women and the Environment. Members also seek funding from European Union (EU) and AUSAID. EU and AUSAID are now covering for 10 NSPAW areas. INGO such as OXFAM and Trocaire also support members for 8 NSPAW areas.

The detail information can be found at ***Annex 11: Member's Donor Information.***

#### **(4.10) Gender Issue per NSPAW area**

In the course of interviews with members, a wide range of gender issues per NSPAW area was raised. Some of those common issues are presented here.

##### **1. Women and Livelihood**

Women face inequality in many areas including:

- wage differences between men and women, especially in informal sector.
- fewer alternative livelihood options during off-season.
- Difficulties in attending livelihood trainings because of restricted mobility (in some areas norms dictate that it is not safe or appropriate for women to travel alone in the evening) and the burden of home care responsibilities.

Lack of resources, awareness, and leadership roles in livelihood

- Less investment for women in livelihood
- Lack of women leadership in livelihood area.
- Some ethnic women do not get inheritance and traditional customs prevent women from owning land and resources.
- Women have less awareness about business policy and marketing strategies.

Lack of Inclusiveness

- Women are perceived to have less business acumen than men and therefore, businesses tend to exclude women, particularly from decision making roles.
- Less opportunity for women from remote and rural area.

Norms

- Society dictates that women should stay at home and do household work only. Women could not be a leader.

##### **2. Women, Education and training**

Gender stereotypical norms and practice impact women's equal access to education

- Early marriage is quite common in rural area which leads young girls school drop out rate is high.
- Many of the capacity building trainings for women are gender-stereotyped trainings. E.g. sewing, knitting, cooking, handmade crafts etc. Women do not get the chance to learn other skills which are more useful in the market. E.g. repairing machines, carpentry etc.
- Men do not want to attend gender trainings, gender is perceived to be a women's issue.

Infrastructure challenges

- Schools are far from the villages. Moreover, the roads are bad and transportation is difficult. Because of transportation difficulties, girls decide to stop schooling.

##### **3. Women and Health**

Women have less health awareness as

- There is a lack of awareness of sexual and reproductive health rights and information, some think it is shameful for women to talk about these issues in public, and potentially damaging, discriminatory and dangerous myths surround sexual and reproductive health.
- Lack of HIV awareness and ongoing stigma around HIV. One member referenced an internal report from CARE (2014) which stated that the HIV infection rate decrease in MSM and Sex Worker but the rate increased in married women due to the reason that married women never discuss HIV and SRH issue openly as they think it is something very private.

#### Lack of Decision Making in health issue

- Men are major decision makers in regards to health issues.

#### People's attitudes towards Female Patients

- Discrimination against HIV patients is high and female PLHIV are more discriminated against.
- Even some medical doctors still have discriminatory attitudes towards female HIV and STI patient.

#### Government Hospital's procedure and practice

- Some procedures and practices in Government hospitals is still a big challenge for women access to health. E.g. If a women face SRH problems and need to undergo an operation, the hospital ask for a signature from her husband or guardian. Woman who does not have husband as well as no guardian face difficulty in this case.

### **4. Violence Against Women**

Women face various types of violence at home, at workplace and even in the community.

- Community avoids getting involved in cases of domestic violence, as they perceive it is a private issue.
- Women from IDP camps face various kind of violence e.g. Alcohol abuse, physical violence, psychological and sexual violence. Victims of violence do not get enough support as very few organizations are now working on VAW.
- Women have less VAW awareness and they do not know where to seek help e.g. legal aids and health services etc.
- No shelters for victims of violence.

### **5. Women in Emergencies Area**

- Lack of gender integration is found in emergency preparedness and response. In the past humanitarian agencies did not consider the specific needs of women but now they include dignity and hygiene kits for women.
- Less women's participation in decision-making roles in case of emergency situations.

### **6. Women and Economy**

- Less opportunity for women to access credit. Women are limited in accessing grants and loans and they are therefore discouraged from engaging in the economic sector.
- Women farmers do not own land and hence are not recognized as farmers. Therefore, women farmers can't get government loan.
- Need to provide women friendly technology and investment for women.

### **7. Women and Decision Making**

- Lack of women's leadership role model.
- Male dominate in decision-making process for all sectors.
- Women need self-confidence and capacity in order to take roles for decision-making.

## **8. Institutional Mechanisms for the Advancement of Women**

- Lack of political will and lack of an effective mechanism to promote women's right

## **9. Women and Human Rights**

- Women face human rights violations in many places. However, they remain silent as they do not have human rights awareness and are often not aware of their rights are being violated.
- The rights of Women with disabilities are being violated. Associations working for disabled persons need to review their organizational procedures so that they will have inclusiveness for women too.

## **10. Women and Media**

- Less women leader representation in media
- Media person needs gender sensitivity and should know ethical guide of gender-based violence.

## **11. Women and the Environment**

- Women are familiar with environmental issues. However, capacity building for environmental knowledge related with law and policy is needed.

## **12. The Girl Child**

- Girl Child also faces violence.

## **Conclusion and Recommendation**

### **(5.1) Members suggestions for NSPAW implementation**

#### **Government:**

- Members feel that Government needs to engage more with CSO and encourage CSO to work more on Human Rights promotion.
- Government should allow CSO to work freely and build trust with women organizations.
- Government should have an operationalized plan as well as a budget for NSPAW implementation from the village level, up.

#### **Parliament:**

- Members feel that all parliamentarians should be aware of NSPAW. They should keep in touch with community and CSO for effective NSPAW implementation.

#### **NGOs/CSOs:**

- Members suggest that NGOs/CSOs should advocate to Government for NSPAW implementation.
- Through this advocacy NGOs and CSOs should bring women's voice and the real needs of community to the Government.
- NGOs/CSOs need to strengthen its network and collaboration within network for NSPAW implementation.
- Moreover, members feels a need to balance individual organization work and network, to ensure sufficient involvement in the collective action of the networks because collaborative effort is essential for advocacy work.
- Members suggest that NGOS and CSOs need to coordinate more with Government too.
- Members also mention that all NGOs and CSOs should mainstream Gender in all program and project. E.g. set quota system for women participation in project activities.
- They need to promote gender champions.
- More research on women's leadership and their challenges should be done.

#### **Consultation:**

- NSPAW consultation meeting is needed at all level.
- Even the Government ministries are also needed to participate in consultation process.



**National level policy / Strategy integration:**

- NSPAW should link with other national level policy and strategy. e.g. NSPAW should integrate in Rural Development Strategy, Reproductive Health Strategy etc.

**More gender equality works in Myanmar:**

- More works on gender awareness should be done for all level.
- It is needed to sensitize Media to have gender sensitivity.

**(5.2) Recommendations for NSPAW implementation**

Below are recommendations from the consultant based on the findings and member's recommendations.

**NSPAW awareness consultation workshop**

WON and GEN need to promote NSPAW awareness through consultation workshops for members, other women network, community, parliament, political parties, ethnic leaders, religious leaders, private sectors, donors and government ministries.

**Advocate Government to operationalize the Plan**

WON and GEN should work together and identify members who have advocacy capacity. Then, in collaboration with other actors like Gender Equality and Women's Empowerment Sectorial Working Group to advocate Government to operationalize have NSPAW as it now three years since the NSPAW's launching ceremony.

The Government should also encourage focal ministries to develop an operationalized plan as well as incorporate NSPAW approaches in the existing policy and strategy.

**Advocate Government to integrate NSPAW into the existing and newly developed national level strategy, planning and policy**

WON and GEN should mobilize members who are actively engaged in national level sectoral working groups or specific policymaking process. Requests should be made to them to advocate Government to integrate NSPAW in the existing or newly developed national level strategy, planning and policy including budgeting.

**More evidence based research and survey per NSPAW area**

Both WON and GEN members are mainly using awareness raising and implementation approaches. All of WON members are local NGOs, CBOs and FBOs. Almost 50% of GEN members are local NGOs. Therefore, sometimes they face financial and human resource limitations, which is a challenge for conducting research and survey. Both networks needs to set clear strategy and encourage members to contribute more in research and survey as well as policy change processes. Though it can be time consuming but can achieve great impact for women's life.

**Application of research findings to feed NSPAW implementation**

WON and GEN can use the research findings from members and feed in for the NSPAW implementation. E.g. Currently GEN did qualitative research on Violence against Women, Social

Cultural Norms research. Findings can serve as a baseline for implementation in the NSPAW VAW area. Likewise WON and GEN should identify current research findings for each NSPAW area for advocacy and implementation purpose.

**Mobilize other CSOs and network**

WON and GEN members have good collaboration with other CSOs and network (e.g. CSO forum, farmer network, labour network etc.). Mobilize other CSOs and network to study NSPAW and integrate in their works as cross cutting issue.

**Seek opportunity to learn from neighbouring country experiences of NSPAW implementation**

WON and GEN should plan for learning opportunity from neighbouring country on their NSPAW implementation experience. They should try to learn how other countries try to advocate and collaborate with Government and other actors. In addition, WON and GEN should study good practices and lessons learned from NSPAW implementation which can be applied in our Myanmar context.

**Set up CSO monitoring mechanism for NSPAW implementation**

WON and GEN should form working group with members to set up CSO monitoring mechanism for NSPAW implementation as well as reporting channel. The annual report and finding can share with other development actors and submit to Government and donors as well.

### Annex 1: WON- GEN Member Mapping Questionnaires

There are (4) Types of Questionnaires: Direct Implementation, Both Direct Implementation and work with partner, work with partners only, network.

The structures of questions are quite the same but little difference for the partners and network.

#### 1. General Information

1.1	Agency Name																					
1.2	Office Address																					
1.3	Operating area (Directly Implementation area only)																					
1.4	Key Stakeholders (project and program's key stakeholders. E.g. Government department which department?)																					
1.5	Donor Name (If Possible)																					
1.6	<p><b>Consortium Information</b>            Have consortium project? Please tick <input type="checkbox"/>.            Yes ( <input type="checkbox"/> ) No ( <input type="checkbox"/> )            If yes please provide consortium information.</p>	<p>Name _____ of _____ consortium</p> <p>Number of agencies involve: ( <input type="text"/> )</p> <table border="1"> <thead> <tr> <th>#</th> <th>Name of agencies</th> <th>Activity</th> <th>Where</th> <th>Target group</th> </tr> </thead> <tbody> <tr> <td> </td> <td> </td> <td> </td> <td> </td> <td> </td> </tr> <tr> <td> </td> <td> </td> <td> </td> <td> </td> <td> </td> </tr> <tr> <td> </td> <td> </td> <td> </td> <td> </td> <td> </td> </tr> </tbody> </table>	#	Name of agencies	Activity	Where	Target group															
#	Name of agencies	Activity	Where	Target group																		

For direct implementation and work with partner, one more data for the partner information is collected.

1.7	<p><b>Partner Information</b></p> <p>Please fill Detailed information of Partners in session IV.</p>	<p>Total Number of partner (Please count all partner) = ( <input type="text"/> )</p> <p>Number of Women focus (NSPAW related) partner out of total partners = ( <input type="text"/> )</p>
-----	--	--

**2. Organization activities against NSPAW 12 areas. Please Tick ✓ only) (Information related with direct implementation)**

#	NSPAW area	Y/N	Research / surveys	Awareness	Implementation	Policy	Budget
1	Women & Livelihood						
2	Women, Education & Training						
3	Women and Health						
4	Violence Against Women						
5	Women & Emergencies						
6	Women & the Economy						
7	Women & Decision-Making						
8	Institutional Mechanisms for the Advancement of Women						
9	Women & Human Rights						
10	Women & the Media						
11	Women & the Environment						
12	The Girl Child						

**3. Detail Information of organization activity (2012 -2014 & 2014-2016)**

(This session is linked with session II. Need to fill only relevant areas ticked in session II only)

**Note: The design of questions is similar for all 12 NSPAW areas with the respective indicators. Here only one area mentioned.**

**Area1: Women & Livelihood (2012- 2016)**

General Information of Women & Livelihood	
Operating Area	
Primary Beneficiaries / Target group	
Key Stakeholders	
Gender issue in livelihood	

**(1.1) Research & Surveys of Women & Livelihood**

(Please provide research & surveys done in 2012-2014, on-going and planning to do in future till 2016)

Current Research & Survey	Time Frame (2012-2014, 2014-2016)	Research/Survey topic or Key research area	Research/survey coverage area (location)

#	Research & Survey Information against NSPAW	Yes/No/ Uncertain	Remark if possible
1	Women's participation in livelihoods in both the formal and informal sectors.		
2	Analysis of the current situation of women's equal inclusion in land and agrarian reform.		
3	Need for women's livelihoods and women's livelihood opportunities.		
4	Women's representation in technical positions and their participation in decision-making in Departments concerned with women's livelihoods.		
5	Women's participation in livelihoods, including the participation of women-led households and women with disabilities. Remark: When carrying out research and surveys, it is necessary to collect data disaggregated by sex, age, ethnicity and location.		

(1.2) Awareness Raising of Women & Livelihood

Current Awareness Raising activity & Topics	Project time frame	Where (Tsp/village)	Main Beneficiaries/Target group

#	Awareness Raising Information against NSPAW	Yes/No/ Uncertain	Remark if possible
1	Implement awareness raising activities for male and female staff in designated focal Ministries and with duty bearers, at national, regional and local levels, responsible for the advancement of women's livelihoods (including CEDAW, the Beijing Platform for Action, and the Millennium Development Goals).		
2	To increase the capacity of women in urban and rural areas to implement community-based initiatives by collaborating with women's organizations.		
3	To provide women with access to information about livelihoods.		

(1.3) Implementation of Women & Livelihood

Current implementation activity & Topics	Project time frame	Where (Tsp/village)	Main Beneficiaries/Target group

#	Implementation Information against NSPAW	Yes/No/ Uncertain	Remark if possible
1	Practical initiatives supported by designated focal Ministries that focus on social protection mechanisms for women, new livelihoods programmes for women living in poverty, and equal treatment in land and agrarian reforms.		
2	Increase in the number of women in decision-making positions of institutions, Departments and NGOs concerning livelihoods.		
3	Establish information centres where women, including women with disabilities, can have access to finding work and information.		
4	Free or paid access for women in urban or rural areas to vocational Training and marketable livelihoods that are relevant to location.		

(1.4) Budget and Policy Making for Women & Livelihood

**Budget for Women & Livelihood related policymaking (2012-2016)**

<b>Yes/No If yes please mention policy name</b>	
<b>Level of policy making</b> 1: Local level 2: National Level	
<b>Time Frame</b> (2012-2014, on-going)	

#	Budget and Policy Making Information against NSPAW	Yes/No/ Uncertain	Remark if possible
1	Allocation of budget, human and material resources to the abovementioned activities by all stakeholders including Government and non-Government organizations.		
2	Review, development and application of laws, policies and procedures for the advancement of women's livelihoods in accordance with CEDAW, the Beijing Platform for Action and the Millennium Development Goals.		
3	Increase in the participation of women in developing and implementing these policies.		

(1.5) Recommendation on Women & Livelihood area for NSPAW implementation.

**For Work with Partner Only Information:**



	(advocacy activity for specific policy making)				
2.10	Women issue (challenges/ difficulties for women, gender issue)				
2.11	* Suggestion for NSPAW implementation				
2.12	* Any other suggestion				

**Note: Please ask 2.10 and 2.11 from respective partners, as it is important for this mapping.**

**Network member form is similar to partner information form.**



**Annex 2: WON-GEN members' NSPAW implementation area by Township.**

**(2.1) Women And Livelihood**

State& Division	Township
Across Myanmar	Across Myanmar
Ayeyarwady	Chaung Tha, Dedaye, Einme, Hinthada, Kangyidaunt, Kyaunggon, Kyonpyaw, Labutta, Maubin, Mawlamyinegyun, Myaungmya, Ngapudaw, Ngwe Saung, Nyaungdon, Pantanaw, Pathein, Pyapon, Thabaung, Yegyi
Bago	Taungoo, Kyankine, Thayarwady
Chin	Matupi, Mindat, Paletwa, Tedim, Tonzand,
Kachin	Myitkyina
Kayin	Hpa-An
Magway	Magway, Min Hla, Mindon, Yenangyaung,
Mandalay	Mandalay
Rakhine	Sittwe
Sagaing	Hkamti, Monywa, Pale
Shan	Kyaukme, Lashio, Manton, Mong Hpen, Aung Pan, Hopong, Kalaw, Nansang, Taunggyi
Taninthary	Dawei, Palaw
Yangon	Dagon Myothit( East/ North/South), Hlaingtharya, Hlegu, Hmawbi, Insein, Mingaladon, Shwepyithar, Thanlyin, Twantay, Yangon

**(2.2) Women, Education and Training**

State& Division	Township
Across Myanmar	Across Myanmar
Ayeyarwady	Bogalaem Chaung Tha, Dedayr, Einme, Hinthada, Kangyidaunt, Kyaiklat, Kyaunggon, Kyonpyaw, Labutta, Maubin, Mawlamyinegyun, Myaungmya, Ngapudaw, Ngwe Saung, Nyaungdon, Pantanaw, Pathien, Pyapon, Thabaung, Wakema, Yegyi
Bago	Bago, Kyauktan, Nyaunglebin, Shwegyin, Taungoo, Kyankine, Pyay, Thayarwady
Chin	Falam, Hakha, Kanpetlet, Matupi, Mindat, Paletwa, Tedim, Thantlang, Tonzang,
Kachin	Bhamo, Hpakan, Kachin, Mogaung, Mohnyin, Myitkyina, Puta-O, Sumprabum, Waingmaw
Kayah	Bawlakhe, Demoso, Hpasawung, Hpruso, Loikaw, Mese, Shadaw
Kayin	Hpa-An, Kawkareik, Kyainseikgyi, Payar 3 Su,
Magway	Aunglan, Mindon, Thayet
Mandalay	Aungmyaythazan, Chanmyathazi, Meiktila, Mogoke, Natogyi, Nay Pyi Taw, Nyaung-U, Patheingyi, Pyigyitagon, Pyinoolwin, Singu
Mon	Mawlamyine, Mudon, Thanbyuzayat, Ye

Rakhine	Ann, Buthidaung, Gwa, Kyaukpyu, Kyauktaw, Maungdaw, Minbya, Mrauk-U, Munaung, Myebon, Pauktaw, Ponnagyun, Ramree, Rathedaung, Sittwe, Thandwe, Toungup, Yanbyae
Sagaing	Monywa, Sagaing, Shwebo
Shan	Kutkai, Lashio, Muse, Nawngkhio, Pang Hkam, Aung Pan, Heho, Inn Lay, Loilen, Nyaungshwe, Taunggyi
Taninthary	Yebyu
Yangon	Dagon Myothit (Ease, North, Seikkan, South), Dala, Hlaingtharya, Hmawbi, Insein, Kamaryut, Kayan, Kungyangon, Kyeemyindaing, Mayangone, Mingaladon, North Okkalapa, Pazundaung, Sanchaung, Shwepyithar, Taikkyi, Thaketa, Thanlyin, Thingangyun, Twantay,

### (2.3) Women and Health

State& Division	Township
Ayeyarwady	Bogale, Dedaye, Einme, Einme, Kyaiklat, Kyangin, Labutta, Maubin, Mawlamyinegyun, Myaungmya, Ngapudaw, Pathein, Pyapon, Thabaung, Wakema
Bago	Inn Ta Kaw, Kyauktan, Taungoo, Kyankine, Pyay
Chin	Falam, Hakha, Matupi, Mindat, Paletwa, Tedim, Thantlang, Tonzang
Kachin	Bhamo, Mogaung, Myitkyina, Waingmaw,
Kayah	Loikaw
Kayin	Hlaingbwe, Hpa-An, Kawkareik, Kayin, Kyainseikgyi, Thandaunggyi
Magway	Aunglan, Chauk, Gangaw, Magway, Myaing, Natmauk, Ngape, Pakokku, Pauk, Salin, Seikphyu, Taungdwingyi, Thayet, Yenangyaung, Yesagyo
Mandalay	Amarapura, Aungmyaythazan, Chanayethazan, Kyaukpadaung, Mahaaungmyay, Meiktila, Myingyan, Natogyi, Nay Pyi Taw, Nyaung-U, Pyawbwe, Pyigyitagon, Pyinoolwin, Taungtha, Yamethin
Mon	Kyaikmaraw, Mawlamyine, Mudon, Paung, Thanbyuzayat, Thaton, Ye
Rakhine	Kyaukpyu, Minbya, Mrauk-U, Myebon, Pauktaw, Ponnagyun, Sittwe, Toungup,
Sagaing	Hkamti, Kale, Monywa, Pale, Sagaing, Tamu
Shan	Kengtung, Tachileik, Lashio, Muse, Pang Hkam, Aung Pan, Inn Lay, Taunggyi
Taninthary	Dawei, Kawthoung, Myeik, Palaw
Yangon	Ahlon, Botahtaung, Daon Myothit (East/ North/ Seikkan/South), Hlaingtharya, Hlegu, Hmawbi, Insein, Kungyangon, Latha, Mayangone, Mingaladon, North Okkalapa, Pabedan, Sanchaung, Shwepyithar, Taikkyi, Thaketa, Thanlyin, Thaingangyun, Twantay

### (2.4) Violence Against Women

State& Division	Township
Across Myanmar	Across Myanmar
Ayeyarwady	Bogalae, Dedaye, Kyaiklat, Kyaunggon, Laburra, Mawlamyinegyun, Myaungmya, Patehin, Pyapon, Wakema
Bago	Inn Takaw, Taungoo

Chin	Falam, Hakha, Kanpetlet, Matupi, Mindat, Paletwa, Tedim, Thantlang, Tonzang
Kachin	Bhamo, Hpakan, IDP camp, Mogaung, Mohnyin, Myitkyina, Puta-O, Sumprabum, Waingmaw
Kayah	Demoso
Kayin	Hlaingbwe, Hpa-An
Magway	Aunglan
Mandalay	Aungmyaythazan, Chamyathazi, Meiktila, Myingyan, Nyaung-U, Patheingyi, Pyigyitagon, Shwe Bo, Mandalay
Mon	Mawlamyine, Mon, Thanbyuzayat, Thaton, Ye
Rakhine	Sittwe
Shan	Lashio, Aung Pan, Nyaungshwe, Taunggyi
Yangon	Dagon Myothit (East/North/Seikkan), Hlaingtharya, Insein, Kamaryut, Sanchaung, Thaketa, Thanlyin, Thingangyun, Twantay, Yangon, Bogale, Labutta, Maubin, Mawlamyinegyun, P

**(2.5) Women and Emergency**

State& Division	Township
Ayeyarwady	Bogale, Labutta, Maubin, Mawlamyinegyun, Pathien, Pyapon
Bago	Inn Ta Kaw , Taungoo
Kachin	Kachin, Mogaung, Myitkyina, Waingmaw
Kayin	Hlaingbwe, Hpa-An, Kayin
Rakhine	Gwa, Kyaukpyu, Kyauktaw, Minbya, Pauktaw, Sittwe, Toungup
Shan	Shan
Yangon	Hmawbi

**(2.6) Women and the Economy**

State& Division	Township
Across Myanmar	Across Myanmar
Ayeyarwady	Bogalae, Dedaye, Labuttaa, Mawlamyinegyun, Ngaputaw, Pantanaw, Pathien, Pyapon
Bago	Inn Takaw, Bago, Nyaunglebin, Shwegyin, Taungoo, Kyankine, Pyay, Thayarwady
Chin	Matupi, Mindat, Tedim, Tonzang
Kachin	Bhamo, Myitkyina, Waingmaw,
Kayah	Demoso, Loikaw
Kayin	Hlaingbwe, Hpa-An, Kawkareik, Kyainseikgyi
Magway	Aunglan, Minbu, Mindon, Thayet,, Kaukas
Mandalay	Mandalay, Nay Pyi Daw, Pyoolwin, Thazi
Mon	Mawlamyine, Ye
Rakhine	Kyaukpyu, Minbya, Myebon,Sittwe
Sagaing	Kale, Tamu
Shan	Lashio, Laukkaing, Inn Lay, Pekon, Taunggyi ,

Tanintharyi	Dawei
Yangon	Ahlon, Botahtaung, Dagon Myothit( East/North), Hlaingtharya, Hmawbi, Insein, Mayangone, North Okkalapa, Sanchaung, Shwepyithar, Taikkyi, Thanlyin, Yangon

**(2.7) Women and Decision Making**

State& Division	Township
Across Myanmar	Across Myanmar
Ayeyarwady	Dedaye, Labutta, Ngaputaw
Bago	Bago, Htantabin, Kyaukkyi, Taungoo, Kyankine, Pyay
Chin	Matupi, Tedim
Kachin	Myitkyina
Kayah	Demoso, Loikaw
Kayin	Kyinseikgyi, Thandaunggyi
Magway	Aunglan, Magway, Min Hla, Minbu, Thayet
Mandalay	Mandalay, Nay Pyi Daw
Mon	Mawlamyine
Rakhine	Gwa, Kyaukpyu, Myebon, Sittwe
Sagaing	Kale
Shan	Taunggyi
Tanintharyi	Dawei
Yangon	Ahlon, Botahtaung, Dagon Myothit( East/North), Hlaingtharya, Hmawbi, Insein, Mayangone, North Okkalapa, Shwepyithar, Taikkyi, Yangon

**(2.8) Institutional Mechanism for the Advancement of Women**

State& Division	Township
Bago	Taungoo,
Chin	Paletwa
Kachin	Myitkyina
Kayah	Kayah
Kayin	Hpa-An
Mandalay	Mandalay, Nay Pyi Daw
Shan	Shan
Yangon	Yangon

**(2.9) Women and Human Right**

State& Division	Township
Across Myanmar	Across Myanmar
Ayeyarwady	Bogalay, Dedaye, Kyeiklat, Kyaunggon, Labutta, Myaungmya, Pantanaw, Pathein, Pyapon
Bago	Inn Ta Kaw, Taungoo, Pyay
Chin	Falam, Hakha, Matupi, Mindat, Tedim, Tonzang

Kachin	Myitkyina
Kayah	Bawlakhe, Demoso, Hpasawng, Hpruso, Loikaw, Mese, Shadaw
Kayin	Hlaingbwe, Hpa-An
Magway	Mindon
Mandalay	Aungmyaythazan, Chanmyathazi, Madaya, Mandalay, Meiktila, Nay Pyi Taw, Nyaing-U, Patheingyi
Mon	Mawlamyine
Rakhine	Kyaukpyu, Sittwe
Sagaing	Tamu
Shan	Namhkan, Pekon, Taunggyi
Tanintharyi	Dawei
Yangon	Hlaingtharya, Pazundaung, Shwepyithar, Thingyangyun, Yangon

**(2.10) Women and the Meida**

Yangon	Yangon
--------	--------

**(2.11) Women and the Environment**

State& Division	Township
Ayeyarwady	Ngapudaw
Bago	Bago
Mandalay	Mandalay
Rakhine	Kyaukpyu, Rakhine
Shan	Lashio, Inn Lay, Kalaw, Taunggyi
Yangon	Ahlon, Dagon Myothit (East/North), Hlegu, Insein, Oak Kan, Taikkyi, Twantay, Yangon

**(2.12) The Girl Child**

State& Division	Township
Kachin	Bhamo, Mansi, Momauk, Myitkyina, Shwegu, Waingmaw
Mandalay	Mandalay
Mon	Mon
Rakhine	Kyaukpyu, Minbya, Mrauk-U, Sittwe, Toungup
Sagaing	Sagaing
Shan	Lashio
Yangon	Ahlon, Botahtaung, Dagon Myothit (North), Hlaingtharya, Hmawbi, Insein, Mayangone, North Okkalapa, Taikkyi, Yangon

**Annex 3: Name list of WON-GEN organizations and their partners' implementation locations per NSPAW area.**

**(3.1) Women and Livelihood**

<b>Location</b>	<b>WON Member and Partner Organization</b>	<b>GEN Member and Partner Organization</b>
Across Myanmar	No organization	Food Security Working Group, Freethinker, Kachin Women's Association Thailand (KWAT), Karen Baptist Convention (KBC), Karen Development Network (KDN), Karenni National Women's Organization (KNOW), Legal Clinic Myanmar, SPECTRUM - Sustainable Development Knowledge Network, NCA, NPA, Yangon Bakery House
Ayeyarwady	Ar Yone Oo, Kayin Baptist Convention, Women's Dept, Mercy Corps, NPA, Oxfam, Patheingyi Myaungmya Baptist Women's Association, Rainbow, Self Support Kayin Baptist Mission Society, Women's Dept (SSKBMS), Triangle, World Food Program (WFP), Yangon Kayin Baptist Women Association (YKBWA), YMCA	Association of Myanmar Disabled Women Affairs, Enlightened Myanmar Research, Francois-Xavier Bagnoud Myanmar (FXB), Gaia Sustainable Management Institute, Knowledge and Dedication for Nation Building (KDN), Myanmar Council of Churches, Relief International (RI), Social Policy & Poverty Research Group, Thadar Consortium, The Lutheran World Federation, Thingaha Organization, World Vision Myanmar, Young Men Christian Association (YMCA)
Bago	Kayin Baptist Convention, Women's Dept, MMCWA, Muslim Women Group, Self Support Kayin Baptist Mission Society, Women's Dept, Taungtha Women's Association, The Mothers' Union, Yangon Kayin Baptist Women Association, YWCA	AAR (Japan), Enlightened Myanmar Research, Gaia Sustainable Management Institute, Knowledge and Dedication for Nation Building (KDN), Myanmar Council of Churches, Social Development Initiative, Social Policy & Poverty Research Group, Young Men Christian Association
Chin	Ar Yone Oo, Ayeik Women Group, Mercy Corps, NPA, Oxfam, The Mothers' Union, Triangle, World Food Program (WFP)	Enlightened Myanmar Research, Gaia Sustainable Management Institute, Knowledge and Dedication for Nation Building (KDN), Myanmar Council of Churches, Social Development Initiative, Social Policy & Poverty Research Group, The Lutheran World Federation, World Vision Myanmar,
Dry Zone	No organization	Thadar Consortium

WON-GEN Member Mapping Report (September 2014-March 2015)

Kachin	Kindness Women Group, The Mothers' Union	AAR (Japan), EcoDev, Gaia Sustainable Management Institute, International Medical Corps (IMC), Karuna Myanmar Social Services - Myitkyina Diocese, Knowledge and Dedication for Nation Building (KDN), Myanmar Council of Churches, Social Development Initiative, Social Policy & Poverty Research Group, SPECTRUM - Sustainable Development Knowledge Network, World Vision Myanmar, YMCA
Kayah	Kayin Baptist Convention, Women's Dept	Gaia Sustainable Management Institute, Knowledge and Dedication for Nation Building (KDN), Myanmar Council of Churches, Social Development Initiative, Social Policy & Poverty Research Group, Thingaha Organization, World Vision Myanmar, YMCA
Kayin	Karen Women Empowerment Group (KWEG), Kayin Baptist Convention, Women's Dept, Pyae Wa (Nha Net Pyar Group), The Mothers' Union	EcoDev, Gaia Sustainable Management Institute (GSMI), Knowledge and Dedication for Nation Building (KDN), Myanmar Council of Churches, Social Policy & Poverty Research Group, The Lutheran World Federation, World Vision Myanmar, Yangon Bakery House, YMCA
Magway	WFP	Burnet Institute (Myanmar), EcoDev, Enlightened Myanmar Research, HELVETAS Swiss Intercooperation, Social Development Initiative, Social Policy & Poverty Research Group, Thingaha Organization, World Vision Myanmar,
Mandalay	Kayin Baptist Convention:Women's Dept, The Mothers' Union	Association of Myanmar Disabled Women Affairs, Enlightened Myanmar Research, Gaia Sustainable Management Institute, Dedication for Nation Building (KDN), Myanmar Council of Churches, Social Development Initiative, Social Policy & Poverty Research Group, World Vision Myanmar, YMCA
Mon	No organization	Enlightened Myanmar Research, FXB, Gaia Sustainable Management Institute (GSMI), Knowledge and Dedication for Nation Building (KDN), Myanmar Council of Churches, Network Activities Group (NAG), Social Policy & Poverty Research Group, Thingaha Organization, YMCA
Rakhine	Ayeik Women Group	EcoDev, Enlightened Myanmar Research, Pyoe Pin, Rakhine Thahaya Association, Relief International, Social Policy & Poverty Research Group, The Lutheran World Federation, World Vision
Sagaing	Ar Yone Oo, Mercy Corps, NPA, Oxfam, Triangle , WFP	EcoDev, Enlightened Myanmar Research, YMCA

WON-GEN Member Mapping Report (September 2014-March 2015)

Shan	AAR Japan, Gaia Sustainable Management Institute (GSMI), International Medical Corps (IMC), Kachin Women's Association Thailand (KWAT), Karen Baptist Convention (KBC), Knowledge and Dedication for Nation Building (KDN), Karenni National Women's Organization (KNOW), Kayin Baptist Convention:Women's Dept, Legal Clinic Myanmar, Meik Swe Myanmar, Mercy Corps, Muslim Women Group, Myanmar Council of Churches, Myanmar Garment Human Resource Development Center (MGHRDC), Myanmar Independent Living Initiative, Network Activities Group (NAG), NPA, Oxfam, Pyoe Pin, Ta Aung Women Group, YWCA	Association of Myanmar Disabled Women Affairs, EcoDev, Enlightened Myanmar Research, Gaia Sustainable Management Institute (GSMI), Knowledge and Dedication for Nation Building (KDN), Myanmar Council of Churches, Network Activities Group (NAG), Social Policy & Poverty Research Group, Thingaha Organization, World Vision Myanmar, YMCA, Yangon Bakery House
Tanintharyi	Kayin Baptist Convention:Women's Dept	EcoDev, Gaia Sustainable Management Institute (GSMI), Knowledge and Dedication for Nation Building (KDN), Myanmar Council of Churches, Social Policy & Poverty Research Group, World Vision Myanmar,
Yangon	Ar Yone Oo, Good Sleep, Kayin Baptist Convention:Women's Dept, Mercy Corps, NPA, Oxfam, Precious Stones, Rainbow, Self Support Kayin Baptist Mission Society (Women's Dept), The Mothers' Union, Triangle, WFP, Yangon Kayin Baptist Women Association	Association of Myanmar Disabled Women Affairs, Burnet Institute (Myanmar), Deaf Resource Centre, Francois-Xavier Bagnoud Myanmar, Gaia Sustainable Management Institute (GSMI), Knowledge and Dedication for Nation Building (KDN), Myanmar Council of Churches, Myanmar Garment Human Resource Development Center (MGHRDC), Myanmar Garment Manufacture Association (MGMA), Myanmar Independent Living Initiative, Social Development Initiative, Social Policy & Poverty Research Group, SPECTRUM - Sustainable Development Knowledge Network, Thingaha Organization, World Vision Myanmar, Yangon Bakery House, Young Men Christian Association

**(Note: 9 GEN members are work with partners only. In this table only their partners name can be found)**



**(3.2) Women, Education and Training**

Location	WON Member and Partner Organization	GEN Member and Partner Organization
Across Myanmar	Akhaya Women	Imagine Myanmar, Karenni National Women's Organization (KNOW), Monastic Education Centre (MEC), Shan Women's Action Network, Women Can Do It (WCDI), Myanmar
Ayeyarwady	Ar Yone Oo, Asho Women, Danmark YWCA, Ecumenical Women Work ( MCC), Kayin Baptist Convention (Women's Dept), National Young Women Christian Association (National YWCA), NPA, Pathein Myaungmya Baptist Women's Association, Phan Tee Eain, Phoenix Association, Pyi Gyi Khin, Rainbow, Rattana Myittar, Save the Children, Self Support Kayin Baptist Mission Society (Women's Dept), Swe Taw, Yangon Kayin Baptist Women Association, YMCA, YWCA	Association of Myanmar Disabled Women Affairs, Enlightened Myanmar Research, Francois-Xavier Bagnoud Myanmar, Gaia Sustainable Management Institute, Kalayarna Matta Foundation, Legal Clinic Myanmar, Myanmar Baptist Convention, Paungku, Ratana Metta Organization, Relief International, Religions for Peace Myanmar, Scholar Institute, Social Policy & Poverty Research Group, Thadar Consortium, Thirimay Women Department Committee, World Concern Myanmar, Young Men Christian Association
Bago	Asho Women, Danmark YWCA, Ecumenical Women Work (MCC), Hindu Women Group, Karuna Foundation, Kayin Baptist Conventioan (Women's Department), MMCWA, Muslim Women Group, National YWCA, Paku Women, Phan Tee Eain, Self Support Kayin Baptist Mission Society ( Women's Dept), Smile Women Empwerment, Taungoo Ingelican Mother Association, Taungoo Women Affair Association, The Mothers' Union, Win-Win, Women Federation for Peace, Women Mate Thaharya Group, Yangon Kayin Baptist Women Association, YWCA	Enlightened Myanmar Research, Equality Myanmar, Kalayarna Matta Foundation, Myanmar Baptist Converntion, Myanmar Indigenous People Ethnic Nationality (MIPEN), Paungku, Ratana Metta Organization, Religions for Peace Myanmar, Social Development Initiative, Social Policy & Poverty Research Group, World Concern Myanamr, YMCA,

WON-GEN Member Mapping Report (September 2014-March 2015)

Chin	AD2030 Vision, Ar Yone Oo, Ayeik Women Gorup, ECCD, Ecumenical Women Work (MCC), Exodus, Friendly Child, Myanmar Enhancement and Empowerment to Travel (MEET), NPA , NPSWA, Ratna Mahal Education Care Group, SCAA(Chin), Save The Children, The Mother's Union, Yankin Youth Group, Yaung Chi Thit	Enlightened Myanmar Research, Equality Myanmar, Gaia Sustainable Management Institute, Kalayarna Matta Foundation, Myanmar Baptist Convention, Myanmar Indigenous People Ethnic Nationality, National Brotherhood Federation Party, Nationa Endowment for Democracy, Ninu (Women in Action Group), Paungki, Scholar Institute, Social Policy & Poverty Reserach Group, The Lutheran World Federation, Women Can Do It, World Concern Myanmar
Dry Zone	No Organization	Thadar Consortium
Kachin	Danmark YWCA, National YWCA, Phoenix Association, The Mother Union, Women Federation for Peace	Agency for Technical Cooperation and Development, EcoDev, Equality Myanmar, Gaia Sustainable Management Institute, Htoi Gender Working Gorup, International Medical Corps (IMC), Kalayarna Matta Foundation, Karuna Myanmar Social Services - Myitkyina Diocese, Legal Clinic Myanmar, Myanmar Baptist Convention, National Brotherhood Federation Party, Norwegian Refugee Council, Paungku, Ratana Metta Organization, Social Development Initiative, Social Policy & Poverty Research Group, Women Can Do It, World Concern Myanmar, YMCA
Kayah	Kayin Baptist Convention, Women's Dept	Agency for Technical Cooperation and Development, CARE International in Myanmar, Equality Myanmar, Gaia Sustainable Management Institute, Kalayarna Matta Foundation, Myanmar Baptist Convention, National Brotherhood Federation Party, Norwegian Refugee Council, Paungku, Social Development Initiative, Social Policy & Poverty Research Group, Thingaha Organization, Women Can Do it, World Concern Myanmar
Kayin	Child Support Group (CSG), Danmark YWCA, Karen Women Empowerment Group (KWE), Karuna Myanmar, Kayin Baptist Convention( Women's Dept), Mon Women's Organization, Myittar Shay Saung, National YWCA, Sardu War, The Mother's Union, White Rose Group, Women Learning Center (WLC), WON Kayin	EcoDev, Equality Myanmar, Imagine Myanmar, Kalayarna Matta Foundation, Myanmar Baptist Convention, Myanmar Indigenous People Ethnic Nationality (MIPEN), National Brotherhood Federation Party, Norwegian Refugee Council, Paungku, Social Policy & Poverty Research Group, The Lutheran World Federation, Women Can Do It, World Concern Myanmar, YMCA
Magway	Ar Yone Oo, Asho Women, NPA, Save The Children	Burnet Institute (Myanmar), EcoDev, Enlightened Myanmar Research, Equality Myanmar, Myanmar Indigenous People Ethnic Nationality (MIPEN), Ratana Metta Organization, Social Development Initiative, Social Policy & Poverty Research Group, Thingaha Gender Organization

WON-GEN Member Mapping Report (September 2014-March 2015)

Mandalay	Asho Women, Danmark YWCA, Ecumenical Women Work ( MCC), Kayin Baptist Convention (Women's Department), National YWCA Phan Tee Eain, Smile Women Empwoerment, The Mother's Union, Winutti Volunteer Group, Win-Win, Yaung Chi Thit	Agency for Technical Cooperation and Development, Association of Myanmar Disabled Women Affairs, CARE International in Myanmar, Enlightened Myanmar Research, Gaia Sustainable Management Institute, Kalayarna Matta Foundation, Legal Clinic Myanmar, Myanmar Baptist Convention, National Brotherhood Federation Party, Paungku, Ratana Metta Organization, Searchers-Myanmar, Social Development Initiative, Social Policy & Poverty Research Group, The Foundation Terre des hommes, Women Can Do It, World Concern Myanmar, World Concern Myanmar, YMCA
Mon	AD2030 Vision, Danmark YWCA, Early Child Care Development (ECCD), Ecumenical Women Work (MCC), Exodus, Friendly Child, Mon Women's Organization, Myanmar Enhancement and Empowerment to Travel (MEET), National YWCA, NSPWA, Phan Tee Eain, Rata Mahal Education Care Group, SACC (Chin), Smile Women Empowerment.	CARE International in Myanmar, Enlightened Myanmar Research, Equality Myanmar, Francois-Xavier Bagnoud Myanmar, Kalayarna Matta Foundation, Myanmar Baptist Convention, National Brotherhood Federation Party, Norwegian Refugee Council, Paungku, Social Policy & Poverty Research Group, Thingahq organization, Women Can Do It, World Concern Myanamr
Rakhine	AD2030 Vision, Ayeik Women Group, Early Child Care Development (ECCD), Exodus, Fridnely Child, Myanmar Enhancement and Empowerment to Travel (MEET), NPSWA, Ratna Mahal Education Care Group, SACC (Chin),Yankin Youth Group, Yaung Chi Thit	CARE International in Myanmar, EcoDev, Enlightened Myanmar Research, Equality Myanamr, Legal Clinic Myanmar, Myanmar Indigenous People Ethnic Nationality (MIPEN), Myittar, National Brotherhood Federation Party, Norweign Fefugee Council, Pyoe Pin, Rakhine Thayaha Assocaition, Relief International, Scholar Institute, Socai Policy & Proverty Reserach Gorup,The Lutheran World Federation, Thirimay Women Department Committee, Women Can Do It
Sagaing	Ar Yone Oo, Ecumenical Women Work (MCC), NPA, Save the Children	EcoDev, Enlightened Myanmar Research, Equality Myanmar, Myanmar Indigenous People Ethnic Nationality (MIPEN), YMCA

WON-GEN Member Mapping Report (September 2014-March 2015)

Shan	AAR Japan, AD2030 Vision, Akhaya Women, Danmark YWCA, Early Child Care Development (ECCD) (Nyaungshwe), Early Child Care Development (ECCD) (Theinny), Ecumenical Women Work (MCC), Exodus, Friendly Child, Gaia Sustainable Management Institute, International Medical Corps (IMC), Kalayarna Matta Foundation, Karenni National Women's Organization (KNOW), Kayin Baptist Convention (Women's Dept), Loi Sam Sit, Meik Swe Myanmar, Monastic Education Centre (MEC), Muslim Women Group, Myanmar Baptist Convention, Myanmar Enhancement and Empowerment to Travel (MEET), Myanmar Garment Human Resource Development Center (MGHRDC), Myanmar Garment Manufacture Association (MGMA), Myanmar Idependent Living Initiative, Myanmar Indigenous People Ethnic Nationality (MIPEN), Myit Myat Thitsar, Myittar, Myittar Sat Wine, National Brotherhood Federation Party, National YWCA, NPA, NPSWA, Paungku, Phan Tee Eain, Phoenix Association, Pyoe Pin, Ratana Mahal Education Care Group, SACC(Chin), Save the Children, Shan Women's Action Network, Smile Women Empowerment, Ta Aung Women Group, Thingaha Organization, Thirimay Women Department Committee, WCDI, World Concern, Yankin Youth Group	Association of Myanmar Disabled Women Affairs, CARE International in Myanmar, EcoDev, Enlightened Myanmar Research, Equality Myanmar, Gaia Sustainable Management Institute, Htoi Gender Working Gorup, Kalayarna Matta Foundation, Myanmar Baptist Convention, Myanmar Indigenous People Ethnic Nationality (MIPEN), National Brotherhood Federation Party, Norwegian Refugee Council, Paungku, Ratana Metta Organization, Religions for Peace Myanmar, Social Policy & Poverty Research Group, Thingaha Organization, Women Can Do It, World Concern Myanmar, YMCA
Tanintharyi	Ecumenical Women Work (MCC), Kayin Baptist Convention (Women's Department), Mon Women's Organization, Phan Tee Eain	EcoDev, Equality Myanmar, Kalayarna matta Foundation, Myanmar Naptist Convention, Norwegian Refugee Council, Paungku, Social Policy & Poverty Research Group, World Concern Myanmar

## WON-GEN Member Mapping Report (September 2014-March 2015)

Yangon	<p>AAR Japan ,AD2030 Vision, Ar Yone Oo, Danmark YWCA,Early Child Care Development (ECCD), Ecumenical Women Work (MCC), Exodus, Friendly Child, Good Sleep, Hindy Women, Kayin Baptist Convention (Women's Department), Muslim Women Council of Myanmar, Myanmar Baptist Convention (Women's Department), Myanmar Enhancement and Empowerment to Travel (MEET), Myanmar National Association of the Blind (Women's Dept), National YWCA, NPA, NPSWA, Phan Tee Eain, Phoenix Association, Rainbow, Ratna Mahal Education Care Group, SACC (Chin), Save the Children, Self Support Kayin Baptist Mission Society (Women's Dept), Smile Women Empowerment, The Mothers' Union, Triangle Women Support Group, Wimutti Volunteer Group, Win WIn, Women Federation for Peace, Yangon Kaying Baptist Women Association, Yangon YWCA, Yankin Youth Gorup, Women Federation for Peace, Yangon Kayin Baptist Women Association, Young Chi Thit</p>	<p>Action Labor Rights, Agency for Technical Cooperation and Development, Burnet Institute (Myanmar), CARE International in Myanmar, Deaf Resource Centre, Equality Myanmar, Francois-Xavier Bagnoud Myanmar, Gaia Sustainable Management Institute, Imagine Myanmar, Kalayarna Matta Foundation, Legal Clinic Myanmar, Myanmar Baptist Convention, Myanmar Garment Human Resource Development Center (MGHRDC), Myanmar Garment Manufacture Association (MGMA), Myanmar Independent Living Initiative, Myanmar Indigenous People Ethnic Nationality (MIPEN), Myanmar Women Entrepreneurs' Association, National Brotherhood Federation Party, Nippon Foundation, Paungku, Ratana Metta Organization, Religions for Peace Myanmar, Searchers-Myanmar, Social Development Initiative, Social Policy &amp; Poverty Research Group, The Foundation Terre des hommes, Thingaha Organization, Women Can Do It, World Concern Myanmar, YMCA</p>
--------	--	--

### (3.3) Women and Health

Location	WON Member and Partner Organization	GEN Member and Partner Organization
Across Myanmar	No Organization	Kachin Women's Association Thailand (KWAT) ,Karen Baptist Convention (KBC), Karen Development Network (KDN) , Karenni National Women's Organization (KNOW),

WON-GEN Member Mapping Report (September 2014-March 2015)

Ayeyarwady	Ar Yone Oo, Arr Man Thit, Asho Women, Burnet Institute, Ecumenical Women Work (MCC), Help Age International (HAI), Karen Women Empowerment Group, Marie Stopes International, Myanmar Nurses and Mid Wife Association (MNWA), National Young Women Christian Association, Oxfam, Phoenix Association, Population Services International, Pyi Gyi Khin, Rainbow, Rattana Myittar, Win Win, Yangon Kayin Baptist Women Association, YMCA, YWCA	Association of Myanmar Disabled Women Affairs, Francois-Xavier Bagnoud Myanmar, Marie Stopes International, Plan Myanmar, Ratana Metta Organization, Relief International, Thadar Consortium, The Lutheran World Federation, Township Health Departments, World Concern Myanmar, World Vision Myanmar, Young Men Christian Association (YMCA)
Bago	Asho Women, Burnet Institute, Ecumenical Women Work (MCC), Gal Kho Gal Bar Baptist Women Group, Help Age International (HAI), Karen Women Empowerment Group, Karuna Foundation, Marie Stopes International, MMCWA, Muslim Women Group, National YWCA, Population Services International (PSI), Smile Women Empowerment, Taungoo Women Affair Association, Win Win, Women Federation for Peace, Women Mate Thaharya Group, Yangon Kayin Baptist Women Association, YWCA	Marie Stope International, Ratana Metta Organization, World Concern Myanmar, Young Men Christian Association
Chin	Ar Yone Oo, Ayeik Women Group, Burnet Institute, Ecumenical Women Work (MCC), Oxfarm	Marie Stopes International, The Lutheran World Federation, World Concern Myanmar, World Vision Myanmar
Dry Zone	No Organization	Thadar Consordium
Kachin	Burnet Institute, Help Age International (HAI), National YWCA, Phoenix Association, Women Federation For Peace	EcoDev, Plan Myanmar, Population Services International (PSI), Ratana Metta Organization, World Concern Myanmar, World Vision Myanmar, YMCA
Kayah	No Organization	CARE International in Myanmar, Population Services International, World Concern Myanmar, World Vision Myanmar

WON-GEN Member Mapping Report (September 2014-March 2015)

Kayin	Burnet Institute, Child Support Group (CSG), Help Age International (HAI), Karen Women Empowerment Group, Mon Women's Organization, National Young Women Christian Association, White Rose Group, Women Learning Center (WLC)	ADRA Myanmar, EcoDev, Malteser International, MATA, The Lutheran World Federation, World Concern Myanmar, World Vision Myanmar, Young Men Christian Association
Magway	Ar Yone Oo, Asho Women, Burnet Institute, Oxfarm	Burnet Institute (Myanmar), EcoDev, IPAS Health Access Rights, Marie Stopes International, Ratana Metta Organization, World Vision Myanmar
Mandalay	Asho Women, Burnet Institute, Ecumenical Women Work (MCC), Help Age International (HAI), Marie Stopes International, National YWCA, Population Services International, Pyi Gyi Khin, Smile Women Empowerment, Win Win	Association of Myanmar Disabled Women Affairs, CARE International in Myanmar, IPAS Health Access Rights, Marie Stopes International, Plan Myanmar, Population Services International, Ratana Metta Organization, World Concern Myanmar, World Vision Myanmar, Young Men Christian Association
Mon	Burnet Institute, Ecumenical Women Work (MCC), Help Age International (HAI), Mon Women's Organization, National Young Women Christian Association, Smile Women Empwerment	CARE International in Myanmar, Francois-Xavier Bagnoud Myanmar, Marie Stopes International, World Concern Myanmar, World Vision Myanmar
Rakhine	Ayeik Women Group	ADRA Myanmar, Better Life Organization, CARE International in Myanmar, EcoDev, Malteser International, MATA, MERCY Malaysia, People Health Foundation, Plan Myanmar, Population Services International, Rakhine Thahaya Association, Relief International, The Lutheran World Federation, Township Health Departments
Sagaing	Ar Yone Oo, Burnet Institute, Ecumenical Women Work (MCC), Oxfarm	EcoDev, Marie Stopes International, Plan Myanmar, Population Services International, Young Men Christian Association

WON-GEN Member Mapping Report (September 2014-March 2015)

Shan	Ahlin Mee Eain, Akhaya Women, Burnet Institute, Ecumenical Women Work (MCC), Help Age International (HAI), Kachin Women's Association Thailand (KWAT), Karen Baptist Convention (KBC), Karen Development Network (KDN), Karenni National Women's Organization, Legal Clinic Myanmar, Marie Stopes International, MATA, Meik Swe Myanmar, Muslim Women Group, Myit Myat Thitsar, Myittar Sat Wine, National YWCA, Oxfarm, People Health Foundation, PHOENIX Association, Population Srvices International, Pyi Gyi Khin, Shan WOMen's Action Network, Smile Women Empowerment, Ta Aung Women Group, Township Health Department, World Concern Myanmar, YWCA	ADRA Myanmar, Association of Myanmar Disabled Women Affairs, CARE International in Myanmar, EcoDev, Malteser International, MATA, Population Services International, Ratana Metta Organization, World Concern Myanmar, World Vision Myanmar, YMCA
Tanintharyi	Ecumenical Women Work (MCC), Mon Women's Organization	EcoDev, Marie Stopes International, Population Services International, World Concern Myanmar,
Yangon	Akhaya Women, Ar Yone Oo, Burnet Institute, Ecumenical Women Work (MCC), Help Age International (HAI), Karen Women Empowerment Group, Marie Stopes International, Myanmar Baptist Convention (Women's Dept), Myanmar National Association of the Blind (Women's Dept), National YWCA, Oxfarm, Paw Wee Dee, Phoenix Association, Population Services International, Precious Stones, Rainbow, Smile Women Empwerment, Win Win, Women Federation for Peace, Yangon Kayin Baptist Women Association, Yangon Young Women Christian Association	ADRA Myanmar, Association of Myanmar Disabled Women Affairs, Burnet Institute (Myanmar), CARE International in Myanmar, Deaf Resource Centre, Francois-Xavier Bagnoud Myanmar, IPAS Health Access Rights, Malteser International, Marie Stopes International, MATA, Myanmar Positive Women Network (MPWN), Myanmar Women Entrepreneurs' Association, Population Services International, Ratana Metta Organization, World Concern Myanmar, World Vision Myanmar, Young Men Christian Association



**(3.4) Violence Against Women**

<b>Location</b>	<b>WON Member and Partner Organization</b>	<b>GEN Member and Partner Organization</b>
Across Myanmar	Akhaya Women	Freethinker Social Support Group, Gender and Development Initiative (GDI), Kachin Women's Association Thailand (KWAT), Karenni National Women's Organization (KNOW), Monastic Education Centre (MEC), Myanmar Institute of Theology (MIT), Shan Women's Action Network, Thingaha Gender Organization, Women Can Do It (WCDI), Myanmar, Women's Organization Network (WON)
Ayeyarwady	YMCA, Karen Women Empowerment Group, Kayin Baptist Convention (Women's Dept), Phan Tee Eain, Population Services International, Pyi Gyi Khin, Rainbow, Rattana Myittar, Swe Taw, Yangon Kayin Baptist Women Association, YWCA	Action for Social Aids, Actionaid Myanmar, Equality Myanmar, Gaia Sustainable Management Institute, Legal Clinic Myanmar, Local Development Network (LDN), Marie Stopes International, RTDO, Student Christian Movement, The Lutheran World Federation, Thingaha Gender Organization, Young Men Christian Association
Bago	Karen Women Empowerment Group, Karuna Foundation, Kayin Baptist Convention (Women's Department), Phan Tee Dain, Taungoo Women Affair Association, The Mothers' Union, Women Federation for Peace, Yangon Kayin Baptist Women Association	Equality Myanmar, Marie Stopes International, YMCA,
Chin	The Mothers' Union	Equality Myanmar, Gaia Sustainable Management Institute, Marie Stopes International, Student Christian Movement, The Lutheran World Federation, Women's Hand Myanmar Foundation
Kachin	Kindness Women Group, The Mothers' Union, Women Federation for Peace	Action for Social Aids, Actionaid Myanmar, Equality Myanmar, Gaia Sustainable Management Institute, Gaia Sustainable Management Institute, Gender and Development Initiative, International Medical Corps, Kachin Women Peace Network, KMSS, Htoi Gender Group, Legal Clinic Myanmar, Local Development Network (LDN), RTDO, Student Christian Movement, Young Men Christian Association

WON-GEN Member Mapping Report (September 2014-March 2015)

Kayah	Kayin Baptist Convention (Women's Dept)	Action for Social Aids, Actionaid Myanmar, CARE International in Myanmar, Equality Myanmar, Gaia Sustainable Management Institute, Local Development Network (LDN), RTDO, Student Christian Movement, Thingaha Gender Organization
Kayin	Child Support Group (CSG), Karen Women Empowerment Group, Kayin Baptist Convention (Women's Dept), WON Group, The Mothers' Union, Women Learning Center (WLC), WON Kayin	Equality Myanmar, Gender and Development Initiative, The Lutheran World Federation, Young Men Christian Association,
Magway	No Organization	Equality Myanmar, Marie Stopes International, Student Christian Movement, Thingaha Gender Organization
Mandalay	Kayin Baptist Convention(Women's Dept), Phan Tee Eain, Pyi Gyi Khin, The Mothers' Union	CARE International in Myanmar, Equality Myanmar, Gaia Sustainable Management Institute, Legal Clinic Myanmar, Marie Stopes International, Student Christian Movement, Young Men Christian Association
Mon	Phan Tee Eain	CARE International in Myanmar, Equality Myanmar, Marie Stopes International, Student Christian Movement, Thingaha Gender Organization
Rakhine	No Organization	Action for Social Aids, Actionaid Myanmar, CARE International in Myanmar, Equality Myanmar, Legal Clinic Myanmar, Local Development Network (LDN),MERCY Malaysia, RTDO, Student Christian Movement, The Lutheran World Federation
Sagaing	No Organization	Equality Myanmar, Marie Stopes International, YMCA
Shan	Action for Social Aids, Akhaya Women, Kachin Women's Association Thailand (KWAT), KMSS, Local Development Network (LDN), Monastic Education Center (MEC), Muslim Women Group, Myanmar Institute of Theology (MIT), Myittar Sat Wine, Phan Tee Eain, Pyi Gyi Khin, RTDO, Shan Women's Action Network, Ta Aung Women Group, Theinny NLD Women Group, Women Can Do It (WCDI), Myanmar	CARE International in Myanmar, Equality Myanmar, Gaia Sustainable Management Institute, Gender and Development Initiative, Student Christian Movement, Thingaha Gender Organization, YMCA
Tanintharyi	Kayin Baptist Convention(Women's Dept), Phan Tee Eain	Equality Myanmar, Marie Stopes International, Student Christian Movement

## WON-GEN Member Mapping Report (September 2014-March 2015)

Yangon	Akhaya Women, Good Sleep, Karen Women Empowerment Group, Kayin Baptist Convention (Women's Department), Muslim Women Council of Myanmar, Phan Tee Eain, Precious Stones, Rainbow, The Mother's Union, Triangle Women Support Group, Women Federation for Peace, Yangon Kayin Baptist Women Association	Action for Social Aids, Actionaid Myanmar, CARE International in Myanmar, Equality Myanmar, Gaia Sustainable Management Institute, Legal Clinic Myanmar, Local Development Network (LDN), Marie Stopes International, RTDO, Student Christian Movement, Thingaha Gender Organization, Women's Hand Myanmar Foundation, Young Men Christian Association
--------	--	--

### (3.5) Women and Emergencies

Location	WON Member and Partner Organization	GEN Member and Partner Organization
Across Myanmar	No Organization	Gender and Development Initiative (GDI), Kachin Women's Association Thailand (KWAT), Karenni National Women's Organization (KNOW), Shan Women's Action Network, Thai-Myanmar Border Mesouk
Ayeyarwady	Ar Yone Oo, Human for Peace, Karen Women Empowerment Group, People in Need, Phan Tee Eain, Yadanar Myay, YWCA	Actionaid Myanmar, Enlightened Myanmar Research, Plan Myanmar, Scholar Institute, The Lutheran World Federation, Township Health Departments, World Concern Myanmar, Young Men Christian Association
Bago	Gal Kho Gal Bar Baptist Women Group, Human for Peace, Karen Women Empowerment Group, Karuna Foundation, MMCWA, Muslim Women Group, Paku Women, People in Need, Phan Tee Eain, Taungoo Anglican Mother Association, Taungoo Women Affair Association, The Mothers' Union, Women Mate Thaharya Group, Yadanar Myay, YWCA	Enlightened Myanmar Research, World Concern Myanmar, Young Men Christian Association,
Chin	Ar Yone Oo, The Mothers' Union	Actionaid Myanmar, Enlightened Myanmar Research, Scholar Institute, The Lutheran World Federation, Women's Hand Myanmar Foundation, World Concern Myanmar
Kachin	The Mothers' Union	Agency for Technical Cooperation and Development, Gender and Development Initiative, Htoi Gender Working Group, Norwegian Refugee Council, Plan Myanmar, World Concern Myanmar, YMCA

WON-GEN Member Mapping Report (September 2014-March 2015)

Kayah	No Organization	Agency for Technical Cooperation and Development, Norwegian Refugee Council, World Concern Myanmar
Kayin	Human for Peace, Karen Women Empowerment Group, People in Need, Sardu War, The Mothers' Union, Yadanar Myay	CERA, Gender and Development Initiative, Malteser International, MERN (Myanmar Environment Reservation Network), Norwegian Refugee Council, Thai-Myanmar Boarder Mesouk, The Lutheran World Federation, World Concern Myanmar, Young Men Christian Association
Magway	Ar Yone Oo	Enlightened Myanmar Research
Mandalay	Phan Tee Eain, The Mothers' Union	Agency for Technical Cooperation and Development, Enlightened Myanmar Research, Plan Myanmar, World Concern Myanmar, Young Men Christian Association
Mon	Phan Tee Eain	Enlightened Myanmar Research, Norwegian Refugee Council, World Concern Myanmar
Rakhine	No Organization	Actionaid Myanmar, Better Life Organization, CERA, Enlightened Myanmar Research, Kachin Baptist Convention, Malteser International, MERCY Malaysia, MERN (Myanmar Environment Reservation Network), Norwegian Refugee Council, Oxfam in Myanmar, Plan Myanmar, Scholar Institute, Shalom, The Lutheran World Federation, Township Health Departments
Sagaing	Ar Yone Oo	Enlightened Myanmar Research, Plan Myanmar, YMCA
Shan	Actionaid Myanmar, CERA, Human for Peace, Kachin Baptist Convention, Kachin Women's Association Thailand (KWAT), Karenni National Women's Organization (KNOW), MERN (Myanmar Environment Reservation Network), Muslim Women Group, People in Need, Phan Tee Eain, Shalom, Shan Women's Action Network, Ta Aung Women Group, Thai-Myanmar Boarder Mesouk, Township Health Departments, World Concern Myanmar, Yadanar Myay	CERA, Enlightened Myanmar Research, Gender and Development Initiative, Htoi Gender Working Group, Malteser International, MERN (Myanmar Environment Reservation Network), Norwegian Refugee Council, World Concern Myanmar, Young Men Christian Association
Tanintharyi	Phan Tee Eain	Norwegian Refugee Council, World Concern Myanmar

## WON-GEN Member Mapping Report (September 2014-March 2015)

Yangon	Ar Yone Oo, Human for Peace, Karen Women Empowerment Group, People in Need, Phan Tee Eain, The Mothers' Union, Yadanar Myay, Yangon YWCA	Agency for Technical Cooperation and Development, CERA, Malteser International, MERN (Myanmar Environment Reservation Network), Thai-Myanmar Border Mesouk, Women's Hand Myanmar Foundation, World Concern Myanmar, YMCA
--------	--	--

### (3.6) Women and Economy

Location	WON Member and Partner Organization	GEN Member and Partner Organization
Across Myanmar	No Organization	SPECTRUM - Sustainable Development Knowledge Network
Ayeyarwady	Ar Yone Oo, Asho Women, Ecumenical Women Work (MCC), IIED, Karen Women Empowerment Group, Kayin Baptist Convention, Women's Dept, Mercy Corps, National Young Women Christian Association, Phan Tee Eain, Phoenix Association, Pyoe Pin, Rattana Myittar, Triangle GH, Yangon Kayin Baptist Women Association, YMCA, YWCA	Gaia Sustainable Management Institute, Kayin Baptist Convention, Myanmar Baptist Convention, Myanmar Council of Churches, Ratana Metta Organization, Thadar Consortium, The Lutheran World Federation, World Concern Myanmar
Bago	Asho Women, Ecumenical Women Work (MCC), Karen Women Empowerment Group, Karuna Foundation, Kayin Baptist Convention (Women's Dept), MMCWA, National Young Women Christian Association, Phan Tee Eain, Smile Women Empwerment, Taungoo Anglican Mother Association, The Mothers' Union, Women Federation for Peace, Women Mate Thaharya Group, Yangon Kayin Baptist Women Association, YWCA	Kayin Baptist Convention, Myanmar Baptist Convention, Myanmar Council of Churches, Ratana Metta Organization, World Concern Myanmar, Asho Women, Ecumenical Women Work (MCC),
Chin	Ar Yone Oo, Ecumenical Women Work (MCC), IIED, Mercy Corps, Pyoe Pin, The Mothers' Union, Triangle GH, Young Chi Thit	Gaia Sustainable Management Institute, Kayin Baptist Convention, Myanmar Baptist Convention, Myanmar Council of Churches, The Lutheran World Federation, World Concern Myanmar
Dry Zone	No Organization	Thadar Consortium

WON-GEN Member Mapping Report (September 2014-March 2015)

Kachin	National Young Women Christian Association, Phoenix Association, The Mothers' Union, Women Federation for Peace	Agency for Technical Cooperation and Development, EcoDev, Gaia Sustainable Management Institute, Kayin Baptist Convention, Myanmar Baptist Convention, Myanmar Council of Churches, Ratana Metta Organization, SPECTRUM - Sustainable Development Knowledge Network, World Concern Myanmar
Kayah	Kayin Baptist Convention (Women's Dept)	Agency for Technical Cooperation and Development, CARE International in Myanmar, Gaia Sustainable Management Institute, Kayin Baptist Convention, Myanmar Baptist Convention, Myanmar Council of Churches, World Concern Myanmar
Kayin	Karen Women Empowerment Group, Kayin Baptist Convention (Women's Dept), National Young Women Christian Association, Pyae Wa (Nha Net Pyar Group), The Mothers' Union, White Rose Group, Women Learning Center (WLC)	EcoDev, Kayin Baptist Convention, Myanmar Baptist Convention, Myanmar Council of Churches, The Lutheran World Federation, World Concern Myanmar
Magway	Ar Yone Oo, Asho Women, IIED, Mercy Corps, Pyoe Pin, Triangle GH	EcoDev, Ratana Metta Organization
Mandalay	Asho Women, Ecumenical Women Work (MCC), Kayin Baptist Convention, Women's Dept, National Young Women Christian Association, Phan Tee Eain, Smile Women Empwerment, The Mothers' Union, Yaung Chi Thit	Agency for Technical Cooperation and Development, CARE International in Myanmar, Gaia Sustainable Management Institute, Kayin Baptist Convention, Myanmar Baptist Convention, Myanmar Council of Churches, Ratana Metta Organization, World Concern Myanmar
Mon	Ecumenical Women Work (MCC), National Young Women Christian Association, Phan Tee Eain, Smile Women Empwerment	CARE International in Myanmar, Kayin Baptist Convention, Myanmar Baptist Convention, Myanmar Council of Churches, World Concern Myanmar
Rakhine	Yaung Chi Thit	Better Life Organization, CARE International in Myanmar, EcoDev, Metta Development Foundation, Oxfam in Myanmar, The Lutheran World Federation
Sagaing	Ar Yone Oo, Ecumenical Women Work (MCC), IIED, Mercy Corps, Pyoe Pin, Triangle GH	EcoDev

## WON-GEN Member Mapping Report (September 2014-March 2015)

Shan	Ecumenical Women Work (MCC), Gaia Sustainable Management Institute, IIED, Kayin Baptist Convention ( Women Department), Mercy Corps, Metta Development Foundation, Muslim Women Gorup, National YWCA, Phan Tee Eain, Phoenix Association, Pyoe Pin, Smile Women Empwerment, Triangle GH, World Concern Myanmar, YWCA	CARE International in Myanmar, EcoDev, Gaia Sustainable Management Institute, Kayin Baptist Convention, Myanmar Baptist Convention, Myanmar Council of Churches, Ratana Metta Organization, World Concern Myanmar
Tanintharyi	Ecumenical Women Work (MCC), Kayin Baptist Convention (Women's Dept), Phan Tee Eain	EcoDev, Kayin Baptist Convention, Myanmar Baptist Convention, Myanmar Council of Churches, World Concern Myanmar
Yangon	Akhaya Women, Ar Yone Oo, Chin Women Development, Ecumenical Women Work (MCC), IIED, Karen Women Empowerment Group, Kayin Baptist Convention (Women's Dept), Mercy Corps, Myanmar Baptist Convention (Women's Dept), National Young Women Christian Association, Paw Wee Dee, Phan Tee Eain, Phoenix Association, Precious Stones, Pyoe Pin, Smile Women Empwerment, The Mothers' Union, Triangle GH, Women Federation for Peace, Yangon Kayin Baptist Women Association, Yangon Young Women Christian Association, Yaung Chi Thit	Agency for Technical Cooperation and Development, CARE International in Myanmar, Gaia Sustainable Management Institute, Kayin Baptist Convention, Myanmar Baptist Convention, Myanmar Council of Churches, Myanmar Women Entrepreneurs' Association, Ratana Metta Organization, SPECTRUM - Sustainable Development Knowledge Network, World Concern Myanmar

### (3.7) Women & Decision making

Location	WON Member and Partner Organization	GEN Member and Partner Organization
Across Myanmar	No Organization	Akhaya Women, Gender and Development Initiative (GDI), Karen Baptist Convention (KBC), Karenni National Women's Organization (KNOW), Shan Women's Action Network, SPECTRUM - Sustainable Development Knowledge Network, Women Can Do It (WCDI)

WON-GEN Member Mapping Report (September 2014-March 2015)

Ayeyarwady	Asho Women, Phan Tee Eain, Pyi Gyi Khin, Yangon Kayin Baptist Women Association	Charity-Oriented Myanmar, Cord, Gaia Sustainable Management Institute, Kayin Baptist Convention, Knowledge and Dedication for Nation Building (KDN), Myanmar Baptist Convention, Relief International, Student Christian Movement, The Lutheran World Federation, World Concern Myanmar
Bago	Karuna Foundation, Taungoo Women Affair Association, Women Mate Thaharya Group, Yangon Kayin Baptist Women Association, YWCA	Kayin Baptist Converntion, Knowledge and Dedication for Nation Building (KDN), Myanmar Baptist Convention, World Concern Myanmar
Chin	Yaung Chi Thit	Gaia Sustainable Management Institute, Kayin Baptist Convention, Knowledge and Dedication for Nation Building (KDN), Myanmar Baptist Convention, Student Christian Movement, The Lutheran World Federation, Women Can Do It, World Concern Myanmar
Kachin	No Organization	Gaia Sustainable Management Institute, Kachin Baptist Convention, Knowledge and Dedication for Nation-Building, Myanmar Baptist Convention, SPECTRUM - Sustainable Development Knowledge Network, Student Christian Movement, Women Can Do It, World Concern Myanmar
Kayah	No Organization	CARE International in Myanmar, Cord, Gaia Sustainable Management Institute, Gender Equality Network, Kayin Baptist Convention, Knowledge and Dedication for Nation Building (KDN), Myanmar Baptist Convention, Student Christian Movement, Women Can Do It, World Concern Myanmar
Kayin	No Organization	Kayin Baptist Convention, Knowledge and Dedication for Nation Building, Myanmar Baptist Convention, The Lutheran World Federation, Women Can Do It, World Concern Myanmar
Magway	Asho Women	HELVETAS Swiss Intercooperation, Knowledge and Dedication for Nation-Building, Student Christian Movement
Mandalay	Asho Women, Phan Tee Eain, Yaung Chi Thit	CARE International in Myanmar, Gaia Sustainable Management Institute, Gender Equality Network, Kayin Baptist Convention, Knowledge and Dedication for Nation Building, Myanmar Baptist Convention, Student Christian Movement, Women Can Do It, World Concern Myanmar



WON-GEN Member Mapping Report (September 2014-March 2015)

Mon	Phan Tee Eain	CARE International in Myanmar, Charity-Oriented Myanmar (COM), Gender Equality Network, Jeephya Education Services (JES), Kayin Baptist Convention, Knowledge and Dedication for Nation Building, Mon Women Organization, Myanmar Baptist Convention, Network Activities Group (NAG), Student Christian Movement, Women Can Do It, Women Organization Network (WON), World Concern Myanmar
Rakhine	Yaung Chi Thit	Better Life Organization, CARE International in Myanmar, Gender Development Initiative (GDI), Gender Equality Network, Oxfarm, Relief International, Student Christian Movement, The Lutheran World Federation, Women Can Do It
Sagaing	No Organization	Knowledge and Dedication for Nation
Shan	Akhaya Women, Phan Tee Eain, Shan Women's Action Network, Ta Aung Women Group, World Concern Myanmar	CARE International in Myanmar, Charity-Oriented Myanmar (COM), Cord, Gaia Sustainable Management Institute, Gender Equality Network, Jeephya Education Services (JES), Kayin Baptist Convention, Knowledge and Dedication for Nation Building, Mon Women Organization, Myanmar Baptist Convention, Network Activities Group (NAG), Phan Tee Eain, Student Christian Movement, Women Can Do It, World Concern Myanmar,
Tanintharyi	Phan Tee Eain	Charity-Oriented Myanmar, Kayin Baptist Convention, Knowledge and Dedication for Nation Building, Myanmar Baptist Convention, Student Christian Movement, World Concern Myanmar
Yangon	Akhaya Women, Good Sleep, Myanmar Baptist Convention, Women's Dept, Phan Tee Eain, Precious Stones, Yangon Kayin Baptist Women Association, Yangon YWCA, Yaung Chi Thit	ACTED, CARE International in Myanmar, Charity-Oriented Myanmar, Cord, Gaia Sustainable Management Institute, Gender Equality Network, Kayin Baptist Convention, Knowledge and Dedication for Nation Building, Myanmar Baptist Convention, Myanmar Women Entrepreneurs' Association, SPECTRUM - Sustainable Development Knowledge Network, Student Christian Movement, Women Can Do It, World Concern Myanmar

### (3.8) Institutional Mechanism for the Advancement of Women

Location	WON Member and Partner Organization	GEN Member and Partner Organization
Across Myanmar	No Organization	Charity-Oriented Myanmar, Free thinker Social Support Group, Gender and Development Initiative (GDI), Karenni National Women's Organization (KNOW)
Ayeyarwady	No Organization	Actionaid Myanmar, Charity-Oriented Myanmar,
Bago	The Mothers' Union	No Organization
Chin	The Mothers' Union	No Organization
Kachin	The Mothers' Union	Actionaid Myanmar, Development Initiative (GDI),
Kayah	No Organization	Actionaid Myanmar, Gender Equality Network (GEN)
Kayin	The Mothers' Union	Development Initiative (GDI)
Mandalay	The Mothers' Union	Gender Equality Network (GEN)
Mon	No Organization	Charity-Oriented Myanmar
Rakhine	No Organization	Actionaid Myanma
Shan	Karenni National Women's Organization (KNOW)	Charity-Oriented Myanmar, Development Initiative (GDI),
Tanintharyi	No Organization	Charity-Oriented Myanmar
Yangon	The Mothers' Union	Actionaid Myanmar, Charity-Oriented Myanmar, Gender Equality Network

### (3.9) Women and Human Rights

Location	WON Member and Partner Organization	GEN Member and Partner Organization
Across Myanmar	No Organization	Deborer, Freethinker Social Support Group, Karen Baptist Convention, Karenni National Women's Organization, Monastic Education Center (MEC), Myanmar Institute of Theology (MIT), Shan Women's Action Network, Thingaha Gender Organization, Women Can Do It (WCDI)

WON-GEN Member Mapping Report (September 2014-March 2015)

Ayeyarwady	Ar Yone Oo, DHF (Peace), Ecumenical Women Work (MCC), Human for Peace, Karen Women Empowerment Group, Kayin Baptist Conventioin (Women's Department), People in Need, Population Services International, Pyi Gyi Khin, VAW (Pyi Gyi Khin), Rattana Myittar, Save the Children, Swedish Peace And Arbitration (SPAS), University of Comlumbia New York, Yadanar Myay, Yangon Kayin Baptist Women Association	Association of Myanmar Disabled Women Affairs, Charity-Oriented Myanmar, Colour Rainbow, Cord, Enlightened Myanmar Research, Equality Myanmar, Gaia Sustainable Management Institute, Kayin Baptist Convention, Labour Right Defender Promoter (LRDP), Legal Clinic Myanmar, Myanmar Baptist Convention, NGOGG, Oxfam, Scholar Institute, Student Christian Movement, Thadar Consortium, The Lutheran World Federation, Thingaha, Women Organization Network, World Concern Myanmar
Bago	Ecumenical Women Work (MCC), Human for Peace, Karen Women Empowerment Group, Karuna Foundation, Kayin Baptist Convention (Women's Department), People in Need, Save the Children, Smile Women Empowerment, Taungoo Anglican Mother Association, Womne Federation for Peace, Women Mate Thaharya Group, Yadanar Myay, Yangon Kayin Baptist Women Association, YWCA	Bago Yoma Care Development Group, Colour Rainbow, Diakonia, Enlightened Myanmar Research, Equality Myanmar, Kayin Baptist Convention, Myaylat Community Forest, NGOGG, Promotion of Indigenous and Nature Together, Social Development Initiative, Thingaha, Women Organization Network, World Concern Myanmar, Wunlat Foundation, Yoma Lu Nge Alin Tan
Chin	Ar Yone Oo, DHF (Peace), Ecumenical Women Work (MCC), Swedish Peace And Arbitration (SPAS), University of Comlumbia New York	Bago Yoma Care Development Group, Colour Rainbow, Diakonia, Enlightened Myanmar Research, Equality Myanmar, Gaia Sustainable Management Institute, Kayin Baptist Convention, Myanmar Baptist Convention, Myaylat Community Forest, NGOGG, Ninu (Women in Action Group), Oxfam, Promotion of Indigenous and Nature Together, Scholar Institute, Student Christian Movement, The Lutheran World Federation, Thingaha, Women Organization Network, World Concern Myanmar, Wunlat Foundation, Yoma Lu Nge Alin Tan
Dry Zone	No Organization	Thadar Consortium
Kachin	Women Federation for Peace	Colour Rainbow, EcoDev, Equality Myanmar, Gaia Sustainable Management Institute, Htoi Gender Working Group, Kayin Baptist Convention, Labour Right Defender Promoter (LRDP), Legal Clinic Myanmar, Myanmar Baptist Convention, NGOGG, Norwegian Refugee Council, Social Development Initiative, Student Christian Movement, Thingaha, Women Organization Network, World Concern Myanmar

WON-GEN Member Mapping Report (September 2014-March 2015)

Kayah	Kayin Baptist Convention, Women's Dept	Colour Rainbow, Cord, Equality Myanmar, Gaia Sustainable Management Institute, Gender Equality Network, Kayin Baptist Convention, Labour Right Defender Promoter (LRDP), Legal Clinic Myanmar, Mines Advisory Group, Myanmar Baptist Convention, NGOGG, Norwegian Refugee Council, Social Development Initiative, Student Christian Movement, Thingaha, Women Organization Network, Word Concern Myanmar, Kayin Baptist Convention (Women's Department)
Kayin	Human for Peace, Karen Women Empowerment Group, Karuna Myanmar, Kayin Baptist Conventon (Women's Department), People in Need, Save the Children, Women Learning Center (WLC), Yadanar Myay	Bago Yoma Care Development Group, Colour Rainbow, Deborer, Diakonia, EcoDev, Equality Myanmar, Kayin Baptist Convention, Myanmar Baptist Convention, Myaylat Community Forest, NGOGG, Norwegian Refugee Council, Promotion of Indigenous and Nature Together, The Lutheran World Federation, Thingaha, World Concern Myanmar, Wunlat Foundation, Yoma Lu Nge Alin Tan
Magway	Ar Yone Oo, DHF (Peace), Swedish Peace And Arbitration (SPAS), University of Comlumbia New York	Bago Yoma Care Development Group, Diakonia, EcoDev, Enlightened Myanmar Research, Equality Myanmar, Myaylat Community Forest, Promotion of Indigenous and Nature Together, Social Development Initiative, Student Christian Movement, Wunlat Foundation, Yoma Lu Nge Alin Tan
Mandalay	Ecumenical Women Work (MCC), Kayin Baptist Convention (Women's Department), Pyi Gyi Khin, Smile Women Empowerment	Association of Myanmar Disabled Women Affairs, Colour Rainbow, Enlightened Myanmar Research, Equality Myanmar, Gaia Sustainable Management Institute, Gender Equality Network, Kayin Baptist Convention, Legal Clinic Myanmar, Myanmar Baptist Convention, NGOGG, Social Development Initiative, Student Christian Movement, Thingaha, World Concern Myanmar
Mon	Ecumenical Women Work (MCC), Smile Women Empwerment, Phan Tee Eain	Charity-Oriented Myanmar, Colour Rainbow, Enlightened Myanmar Research, Equality Myanmar, Gender Equality Network, Jeephya Education Services (JES), Kayin Baptist Convention, Land Core Group, Myanmar Baptist Convention, Myanmar Ecclesia of Women in Asia (MEWA), NGOGG, Norwegian Refugee Council, Student Christian Movement, Thingaha, World Concern Myanmar

WON-GEN Member Mapping Report (September 2014-March 2015)

Rakhine	KWEG,	Bago Yoma Care Development Group, Better Life Organization, Diakonia, EcoDev, Enlightened Myanmar Research, Equality Myanmar, Gender Equality Network, Labour Right Defender Promoter (LRDP), Legal Clinic Myanmar, Metta Development Foundation, Myaylat Community Forest, Norwegian Refugee Council, Oxfam, Promotion of Indigenous and Nature Together, Scholar Institute, Student Christian Movement, The Lutheran World Federation, Wunlat Foundation, Yoma Lu Nge Alin Tan
Sagaing	Ar Yone Oo, DHF (Peace), Ecumenical Women Work (MCC), Swedish Peace And Arbitration (SPAS), University of Comlumbia New York	Bago Yoma Care Development Group, Diakonia, EcoDev, Enlightened Myanmar Research, Equality Myanmar/HREIB, Myaylat Community Forest, Promotion of Indigenous and Nature Together, Wunlat Foundation, Yoma Lu Nge Alin Tan
Shan	Ahlin Mee Eain, Bago Yoma Care Development Gorup, Charity-Oriented Myanmar (COM), Colour Rainbow, Deborer, DHF (Peace), Diakonia, Ecumenical Women Work (MCC), Equality Myanmar, Gaia Sustainable Management Institution, Gender Euqality, Human For Peace,Jeephya Education Services (JES), Karen Baptist Convention (KBC), Karenni National Women's Organization (KNOW), Kayin Baptist Convention (Women's Dept), KWEG, Labour Right Defender Promoter (LRDP), Land Core Group, Legal Clinic Myanmar (LCM), Metta Development Foundation, Monastic Education Centre (MEC), Muslim Women Gorup, Myanmar Baptist Convention, Myanamr Eccliesia of women in Asia (MEWA), Myanmar Institute of Theology (MIT), Myaylat Community Forest, NGOGG, Oxfam	Association of Myanmar Disabled Women Affairs, Bago Yoma Care Development Group, Charity-Oriented Myanmar, Colour Rainbow, Cord, Diakonia, EcoDev, Enlightened Myanmar Research, Equality Myanmar, Gaia Sustainable Management Institute, Gender Equality Network, Htoi Gender Working Group, Jeephya Education Services (JES), Kayin Baptist Convention, Land Core Group, Myanmar Baptist Convention, Myanmar Ecclesia of Women in Asia (MEWA), Myaylat Community Forest, NGOGG, Norwegian Refugee Council, Phan Tee Eain, Promotion of Indigenous and Nature Together, Student Christian Movement, Thingaha, World Concern Myanmar, Wunlat Foundation, Yoma Lu Nge Alin Tan
Tanintharyi	Ecumenical Women Work (MCC), Kayin Baptist Convention (Women's Dept)	Charity-Oriented Myanmar, Colour Rainbow, EcoDev, Equality Myanmar, Kayin Baptist Convention, Myanmar Baptist Convention, NGOGG, Norwegian Refuee Council, Student Chirstian Moverment, Thingaha, Women Orgniazatoin Network, World Concern Myanmar

## WON-GEN Member Mapping Report (September 2014-March 2015)

Yangon	Ar Yone Oo, DHF(Peace), Ecumenical Women Work (MCC), Human for Peace, Karen Women Empowerment Group, Kayin Baptist Convention (Women's Dept), People in Need, Save the Children, Smile Women Empowerment, Swedish Peace and Arbitration ( SPS), Triangle Women Support Group, University of Comlumbia New York, Women Federation for Peace, Yadanar Myay, Yangon Kayin Baptist Women Association	Association of Myanmar Disabled Women Affairs, Bago Yoma Care Development Group, Charity-Oriented Myanmar, Charity-Oriented Myanmar, Colour Rainbow, Cord, Deborer, Diakonia, Equality Myanmar, Gaia Sustainable Management Institute, Gender Equality Network, Kayin Baptist Convention, Labour Right Defender Promoter (LRDP), Legal Clinic Myanmar, Myanmar Baptist Convention, Myaylat Community Forest, NGOGG, Promotion of Indigenous and Nature Together, Social Development Initiative, Student Christian Movement, Thingaha, World Concern Myanmar, Wunlat Foundation, Yoma Lu Nge Alin Tan
--------	--	--

### (3.10) Women and the Media

Location	WON Member and Partner Organization	GEN Member and Partner Organization
Across Myanmar	No Organization	Women Can Do It
Ayeyarwady	No Organization	Association of Myanmar Disabled Women Affairs
Kachin	No Organization	Women Can Do It
Kayah	No Organization	Women Can Do It
Kayin	No Organization	Women Can Do It
Mandalay	No Organization	Association of Myanmar Disabled Women Affairs, Women Can Do It
Mon	No Organization	Women Can Do It
Rakhine	No Organization	Women Can Do It
Shan	Ta Aung Women Group	Association of Myanmar Disabled Women Affairs, Women Can Do It
Yangon	Akhaya Women	Association of Myanmar Disabled Women Affairs, Women Can Do It

**(3.11) Women and the Environment**

<b>Location</b>	<b>WON Member and Partner Organization</b>	<b>GEN Member and Partner Organization</b>
Across Myanmar	No organization	Freethinker Social Support Group
Ayeyarwady	Ecumenical Women Work (MCC), IIED, Mercy Corps, National YWCA, Save the Children, Triangle GH, Yangon Kayin Baptist Women Association, YMCA	Charity-Oriented Myanmar, Gaia Sustainable Management Institute, Young Men Christian Association, Burnet Institute
Bago	Karuna Foundation, MMCWA, Muslim Women Group, Taungoo Anglican Mother Association, Taungoo Women Affair Association, Women Federation for Peace, Women Mate Thaharya Gorup, YWCA, Yangon Kayin Baptist Women Association	Diakonia, Myanmar Green Network, Myaylat Community Forest, Promotion of Indigenous and Nature Together, Wunlat Foundation, Yoma Lu Nge Alin Tan, YMCA
Chin	Burnet Institute, Ecumenical Women Work (MCC), IIED, Mercy Corps, Save the Children, Triangle GH	Diakonia, Gaia Sustainable Management Institute, Myanmar Green Network, Myaylat Community Forest, Promotion of Indigenous and Nature Together, Wunlat Foundation, Yoma Lu Nge Alin Tan
Kachin	National Young Women Christian Association, Women Federation for Peace	EcoDev, Gaia Sustainable Management Institute, YMCA
Kayah	No organization	Gaia Sustainable Management Institute
Kayin	National Young Women Christian Association, Women learning Center (WLC), Youth Network (Taung Kalay)	Diakonia, EcoDev, Myanmar Green Network, Myaylat Community Forest, Promotion of Indigenous and Nature Together, Wunlat Foundation, Yoma Lu Nge Alin Tan, Young Men Christian Association
Magway	Burnet Institute, IIED, Mercy Corps, Save the Children, Triangle GH	Diakonia, EcoDev, Myanmar Green Network, Myaylat Community Forest, Promotion of Indigenous and Nature Together, Wunlat Foundation, Yoma Lu Nge Alin Tan
Mandalay	Ecumenical Women Work (MCC), National YWCA	Gaia Sustainable Management Institute, YMCA
Mon	Ecumenical Women Work (MCC), National YWCA	Charity-Oriented Myanmar
Rakhine	No organization	Better Life Organization, Diakonia, EcoDev, Myanmar Green Network, Myaylat Community Forest, Promotion of Indigenous and Nature Together, Wunlat Foundation, Yoma Lu Nge Alin Tan

## WON-GEN Member Mapping Report (September 2014-March 2015)

Sagaing	Ecumenical Women Work (MCC), IIED, Mercy Corps, Save the Children, Triangle GH	Diakonia, EcoDev, Myanmar Green Network, Myaylat Community Forest, Promotion of Indigenous and Nature Together, Wunlat Foundation, Yoma Lu Nge Alin Tan, YMCA, Burnet Institute,
Shan	Diakonia, Ecumenical Women Work (MCC), Gaia Sustainable Management Institute, IIED, Myit Myat Thitsar, National YWCA, Save the Children, Triangle GH,	Cherity Oriented Myanmar, Diakonia, EcoDev, Gaia Sustainable Management Institute, Myanmar Green Network, Myaylat Community Forest, Promotion of Indigenous and Nature Together, Wunlat Foundation, Yoma Lu Nge Alin Tan, Young Men Christian Association, Burnet Institute
Tanintharyi	Ecumenical Women Work, MCC	Charity-Oriented Myanmar, EcoDev
Yangon	Burnet Institute, Ecumenical Women Work, MCC, IIED, Mercy Corps, National Young Women Christian Association, Precious Stones, Save The Children, Triangle GH, Women Federation for Peace, Yangon Kayin Baptist Women Association	Charity-Oriented Myanmar, Diakonia, Gaia Sustainable Management Institute, Myanmar Green Network, Myanmar Women Entrepreneurs' Association, Myaylat Community Forest, Promotion of Indigenous and Nature Together, Wunlat Foundation, Yoma Lu Nge Alin Tan, Young Men Christian Association

### (3.12) The Girl Child

Location	WON Member and Partner Organization	GEN Member and Partner Organization
Across Myanmar		Kachin Women's Association Thailand (KWAT),
Ayeyarwady	Yangon Kayin Baptist Women Association, Urban Rural Mission (MCC)	Karuna Myanmar Social Services, Plan Myanmar, Positive Muslim Group, Save the Children, Ratana Metta Organization,
Bago	Taungoo Women Affair Association, Urban Rural Mission (MCC), Yangon Kayin Baptist Women Association, YWCA	Karuna Myanmar Social Services, MMCWA, Positive Muslim Group, Ratana Metta Organization, Save the Children
Kachin	No Organization	Plan Myanmar, Ratana Metta Organization
Kayin	No Organization	Save the Children
Magway	No Organization	Ratana Metta Organization
Mandalay	Colorful Girls,	Plan Myanmar, Ratana Metta Organization
Mon	Colorful Girls	No Organization
Rakhine	No Organization	Plan Myanmar



WON-GEN Member Mapping Report (September 2014-March 2015)

Sagaing	No Organization	Plan Myanmar
Shan	Colorful Girls, Urban Rural Mission (MCC), Yangon Kayin Baptist Women Association	Kachin Women's Association Thailand (KWAT), Karenni National Women's Organization (KNOW), Karuna Myanmar Social Services, Positive Muslim Group, Ratana Metta Organization, Save the Children, Shan Women's Action Network,
Yangon	Colorful Girls, Good Sleep, Urban Rural Mission (MCC), Yangon Kayin Baptist Women Association	Karuna Myanmar Social Services, Positive Muslim Group, Ratana Metta Organization, Save the Children

**Annex 4: Detailed Information of WON/GEN members' activities per NSPAW approach for each NSPAW area.**

**(4.1) Women And Livelihood**

#	NSPAW Approach	Name of Topics/Activity
4.1.1	Research And Survey	Ageing and Economic Vulnerability, Agriculture and Natural Resources Management, Assessment of renewable energy development, Baseline Social Production, Commercialization of Rural livestock Sector, Community Lead for Social Production Action (CLASP), Credit Market Analysis, Disability and Inequality, Disability and Poverty, Food Security Assessment, Gender Value Chain for Fishery, Integrated Livelihood and Market Survey, Internal Seasonal Migration Studies, Legal Research, Livelihood for All, Livestock Breeding Option, Market Chain Survey, Migration, Outcome Assessment of Building Resilience Through Livelihood Recovery, Poverty and Social Impact Analysis (PSIA), Qualitative Social and Economic Monitoring, Village Resource Mapping, Women Empowerment Research, Women garment worker survey
4.1.2	Awareness Raising	Agriculture and Livestock Training, Accounting, Awareness raising from media (FM & Short Film), Balm Production Training, Beautify Training (make up and hair style), Capacity Building for KG Teacher, Cooking Training, Data Analysis and Report Writing on M&E Skill for staff, Do No Harm Training, Exchange Visit, Farmer Field School, Fishery Training, Food-processing (tea processing, local snacks, etc.), Fresh Water Awareness, Gender Awareness Trainings, Handicraft Training, Human trafficking and safe migration, Introduction Land Policy, Land Law Education, IEC Development, Livelihood related trainings (Agriculture, livestock, Home gardening, etc.), Livestock Training, Mine Risk Education, Nurse Training, Nutrition Training, Proposal Writing Skill, Public Policy and Advocacy, Role of women and livelihood food security, SALT Training, Scholarship Support for Vocational Training, Series of workshops on labor rights and factory safety, Sewing Training, Shampoo Production Training, Soap Production Training, Social Protection Awareness Workshop, Support poor women and women headed partner households to enhance farming skills and increase production, Vocational Training, Wool Knitting Training
4.1.3	Implementation	Assist to poor partner households for small scale livestock/supplements, Aquariums, Provide capital for livelihood, Road Construction, Event for corporate Social Responsibility and Disable, Distribution: Boat, Cycle and Pamphlet, Facilitate the creation of business development strategies within women groups, Finding job at Garment Factory, Provide fund for women, Provide good sleep bed nets, Provide candle, Provide Job opportunity, Provide well for safe water, investment for IG, Project on Land Registration, Livestock support, Microfinance, Nutrition Support, Pasture Using, Revolving Fund, Rice Bank, Seed Bank, Seed fund support, Saving and Loan, Sewing Machine Support, Small business training and support, Social Protection Activities, Thone Pan Hla-Women Garment workers Association, Training Women on their business skill needs 6 different types of business skill training, Vocational Training Center, Weaving and Sewing Training, Women's Empowerment Program,
4.1.4	Policy Making	<b>Local Level:</b> Agriculture Investment Law, Farmer Right Policy, Farmer Welfare Enhancing and Protection Law and By Law Process, Land Used Policy

## WON-GEN Member Mapping Report (September 2014-March 2015)

		<p>(Collaboration with land core group)</p> <p><b>National Level:</b>National Framework on Rice Policy, Seed Law, Rakhine Fresh Water Fishing Law, Fishery Policy, Labour Rights in Garment Factory (Thone Pan Hla Association), Submit recommendation to Government for Export Policy and Agriculture Policy</p>
--	--	---

4.2	<b>Women, Education and Training</b>	
#	NSPAW Approach	Name of Topics/Activity
4.2.1	Research And Survey	Women participation in politic and social activities, Social Assessment on the Myanmar Decentralization Funds to School, Research for Volunteerism Law, Need Assessment for Elderly People, Need Assessment for 13-30 age, Gender and power analysis, Engaging men Strategy, Capacity Building Survey,
4.2.2	Awareness Raising	Basic literacy training, Beautify training (make up and hair), Bible study, Bookkeeping, Braille training, Capacity Building, Career aspiration talk, CBO strengthening, CEDAW, Child Care Approach (CCA), Child Right, Civic Education, Community Educators Training, Computer Training, Creating inclusive school communities, Discipleship Training, Early Child Care Development, Education Awareness, Empowering ethnic youth, English Training, Ethnic Minorities Development, Financial Management, Functional Literacy, GBV, Gender awareness, Trafficking and Civic Education, Gender and Peace, Gender Awareness Modular Courses Training, Gender mainstreaming in development and routine review of structures, systems, policies, guidelines and community training, Handicraft Training, Human Rights, Home Management Course, Health Education, HIV/AIDS Awareness, Hygiene Training, Income Generating Training, Information communication and technology, Interfaith and Peace Education, Interfaith Training, Juridical Domination, Key board training, Law & Political awareness, Leadership ( communication, management, personal growth), Life Skill Training, Major Policy Change, Management Training, Micro Credit, Narcotic Awareness, Nursery Teachers' Training, National Strategic Plan for Education, Organization Development, Parental Education, Pastors' wives Training, PCM & Proposal training, Peace Education, Peace Media Education, Personal advancement and career enhancement, Primary School Teacher training, Professional Community Development Program, Research Training, Right Based Education, Rural Education Development (Capacity Building), Sewing Training, Sharing Religious Information, Sign Language Training, Social development, Social Science Courses, Self Help Group awareness, Social Workers' Training, Summer School, Team Building, teenage girls training, Trafficking Awareness, Training in using BIO Fertilizer and Bio Pesticide, Union of Food Training, UNSCR 1325 for women participation in peace, Vocational Training, VAW Law and Burmese Customary Law and CEDAW, Vocational Training, Volunteer Training, Voter Education, WASH, Women and leadership training, Women Empowerment training, Worker Law, Workshop on good governance and leadership and advocacy skills, Youth Development, Youth Empowerment Initiative, Youth Rights Defenders awareness.
4.2.3	Implementation	Advocacy, American Small Grant, Annual Sermon Material production and distribution (Devotional Book), Boarding House, Bulletins, Paper, Knowledge Product and Booklets production, Child Abuse, Child Soldier protection activity,

## WON-GEN Member Mapping Report (September 2014-March 2015)

		<p>Community Mobilization activity, Development Centre, Disable Student Enrolling support, ECCD Centre, English Learning Books production, Forming Interfaith Youth Network Myanmar, Grant for tuition fees Informal education (English speaking training, Chinese Language training, Infrastructure (School), Knowledge Talk, Link with the student and the sponsor for education, Literature Competition, Mentorship Program, Networking for Health &amp; Education, NGO Child Rights Working Group (NCRWG), Non Informal Education, Nursery School, Nutrition Support, On Job training activity, Original Research Paper, Personal Development, Political Women Forum, Preschool Building, Provide school support, Public Campaign, Scholarship Program, School Fees Support, School Material Support, Small Grant for CBO, Solar System provision, Stipend for student, Teaching Aid, Trauma Healing, Water Tank Provision, Women Empowerment Program, Women Eye Journal, Women View Magazine, Women Learning Centre, Youth Internship Program</p>
4.2.4	Policy Making	<p><b>Local Level:</b> Develop School Curriculum with Kachin Language and promote Kachin Literacy, Mon Pyi Thit Education System at Mon State, Promote Child rights too Education through National Child Forum, Child Law,</p> <p><b>National Level:</b> Include VAW protection at all Government training school, Education Law</p>

4.3 **Women And Health**

#	NSPAW Approach	Name of Topics/Activity
4.3.1	Research And Survey	Accessibility of harm reduction services from drop in center (DIC) among drug users in selected townships in Myanmar, Accountability Practice, An evaluation of an integrated community and clinic based intervention to improve the sexual health of men who have sex with men in Myanmar, Anti-retroviral Therapy (ART) adherence among people living with HIV (PLHIVs) in selected townships in Myanmar, Barriers to Access to PMTCT Services by Female Sex Workers, Based line for ADP, Behavioral survey of men at Taung Pyone festival, Burden of malaria and co-infections in pregnant women in Myanmar, Client follow up study for IUD. Quality assessment, Documenting Lessons Learned for JIMNCH Myanmar, Drug Use Pattern, HIV Knowledge and Accessibility to Harm Reduction Services in Pekhon Township, EPI Research, Gender and power analysis (Northern Shan State), Hygiene Survey, Mortalities Rate, Nutrition Data, Perception towards being a Man having Sex with Man, Professional development program for MW, Reduced HIV infection and increased survival amongst HIV exposed infants in Myanmar, China and Papua New Guinea, Risk and Social Mapping Analysis of Men Sex with Men, Sex Worker Size Estimation (Population), Socio-economic impact of HIV at household level in Myanmar, SRH and Engaging men research, Study on cause of death in under 5 children mortality in Myanmar: A National Survey, Study on HIV/AIDS consequences to socio economic situation of HIV affected household, Survey for basic health knowledge among Sex Worker, Survey on Emergency Referral, Diabetes Awareness
4.3.2	Awareness Raising	Basic training for AMW (6 month), Hygiene awareness (4 Clean training), AN care, PN care, Safe delivery, HIV awareness, Family Planning, Birth Spacing Awareness, Awareness Raising activities to access to and utilization of Sexual and Reproductive health Care, Cervix Cancer Awareness, Community Health Care Training, Dengue Hemorrhagic Fever Awareness, Diabetes Prevention, Elderly Person Care and Counseling Training, Environmental Sanitation, Gender and health talk, Harm Reduction, Health Education( RH, HIV,Child care, prevention communicable disease),Peer Education on Health, HIV Awareness, Hygiene Training, Maternal and Child Health, New Born Care Training, Nurse Aid Training, Nutrition Awareness, Parental Training, Personal Hygiene, Post Abortion Care, Reproductive Health awareness (Basic, TOT), Seasonal Disease Awareness, Sexual and RH Training, Snake Awareness, Staff Capacity Training ( orientation, interpersonal communication), TB Awareness, Training for Mid Wife, WASH training, Youth Volunteer Training,

## WON-GEN Member Mapping Report (September 2014-March 2015)

4.3.3	Implementation	<p>ART Support, Birth and Abortion Fees Support, Birth Spacing Program, Blood Testing for HIV, Camp Clinic, Care Services, Caring Pregnancy Women, Case finding and investigations of suspected TB and HIV positive, Clinic ( RH,TB,HIV,Malaria), Community Based Clinic, Construction of Delivery room, Contraceptive support, Counseling and treatment service for HIV, Dental Prevention and Care, Distribution: Condom; Hygiene Kit; Delivery Kit; Mosquito Net, Drinking Water Resource Provision, Funeral Fees Support, Provide medicine and Food for very poor person in target area, Hardship Fund Support for giving Birth and Serious Health Issue, Harm Reduction Service, Health services and nutrition supported, Health System Strengthening and Emergency Referral, HIV Care, Support and Treatment, HIV Prevention, Home Care Support, Hostel for PLHIV, Infrastructure (Toilet and Water Tap), IUT Support,Maternal and Child Health Care support, Medical Check Up Provision, Medicine Support, Mini Mobile Clinic, Mobile Clinic, Mosquito Net distribution, Networking with Township Health Department, Nutrition and Immunization, Nutrition Support: Elderly Person, patient at hospital, Older Person Self Help Group Project, Patient Attendance, Pregnant Women Care, Prepare nutritious food within groups, Provide the HE materials and supports services Fees, Provide water pump, rain water collection tank, Water system construction, Providing the health kit to the AMW and also in the DIC, Referral service: Pregnant women, Mother and children health, hospital etc. Referral and information sharing, Scholarship for Health Training, Setup Clinic, Sexual and Reproductive health service provisions, Support for birth spacing, inoculation, health center, Building toilet, Transportation cost support for health care, Village health committee activities (encourage women involvement and women leadership ), Volunteer recruitment and training, Voluntary home based care service.</p>
4.3.4	Policy Making	<p><b>Local Level:</b> No hidden patient in2020 policy, more female doctors at MOH  <b>National Level:</b> Reproductive Health Policy, Population Policy, National Strategy for Reproductive Health, Health Strategy, Draft HIV law, Cervical Cancer Prevention Policy</p>

4.4 **Violence Against Women**

#	NSPAW Approach	Name of Topics/Activity
4.4.1	Research And Survey	Behind the silence , Conducted Knowledge Assessment for VAW(By PGK with the Technical support of (CARE) , Gender and Power analysis ( VRW), Social & Cultural norm, Form of Violence, Violence and Disable Women, Violence from the Conflict area, Survey on VAW, Violence service mapping, Women need assessment
4.4.2	Awareness Raising	16 Days activism History and awareness, Addressing SGBV, Making Women Safe in Mon and Kayin States, CEDAW and Law Awareness, Conduct training on Women Rights including VAW, Gender Based Violence, Empowerment training, Forum and VAW training, GBV and Gender Training for lawyers and community, Gender Awareness Modular Courses, Legal awareness, Non Violence Communication, Peace Building, Positive Masculinity, Produce VAW IEC, Public Awareness about IWD and white Ribbon Campaign, Sexual Violence Prevention training, Sexuality TOT, Sharing information about VAW and the contact person to inform the issue, Trafficking training, VAW & Harassment awareness, Vocational Training, Women & Leadership, GBV Workshop for women garment workers, Women Rights and Gender Discrimination awareness
4.4.3	Implementation	GBV case referral, Handle GBV case, Women Group discussion on GBV, IEC producing and distribution about GBV types and how to address GBV, Financial support for survivor, Legal aids support, Networking with NGO, Forming GBV action team, Home based care program, Women care center (Shelter), Networking with lawyer, Mediating and consultation for GBV case, Hot line service, Free legal aids service, Provide social support, medical response provision, Violence awareness through media (e.g. sky net, TV program), Spouse Gathering, One Billion Rising Activity, Refer GBV case to YLC, Networking and Alliance Seeking for Advocacy,Case Counseling
4.4.4	Policy Making	<b>Local Level:</b> Strategy to handle GBV case at IDP camp <b>National Level:</b> Prevention on Violence Against Women Law Drafting Process

4.5 **Women And Emergencies**

#	NSPAW Approach	Name of Topics/Activity
4.5.1	Research And Survey	DRR, Freedom women, Gender and Peace, Mapping of early warning system, Post Nargis Social impact monitoring, Research on women participation in peace process, Women access to justice, Women participation in peace building process,
4.5.2	Awareness Raising	Capacity Building for DRR, early warning evacuation planning. Fire and Rescue training, First Aids, Gender and DRR training, Hygiene awareness, Awareness on relief operation, WASH

## WON-GEN Member Mapping Report (September 2014-March 2015)

4.5.3	Implementa tion	WASH, Distribution: Rice , food, cloth, dignity kit, household kit, hygiene kit, Pregnant Kit, Material Support: Life Jacket, Electric Light, Rope, Loud Speaker, Infrastructure: Pond, Shelter, well and toilet construction. Money Donation, Put disaster preparedness plan into household development plan, Rapid insurance for civil documentation, Reconstruction of durable shelter and permanent schools, Support emergency case, trauma Healing service provision,
4.5.4	Policy Making	<b>National Level:</b> DR Law, Myanmar Action Plan for DRR, ECCD Policy,

### 4.6 Women And the Economy

#	NSPAW Approach	Name of Topics/Activity
4.6.1	Research And Survey	Assessment on Rubber market information, Delivering Prosperity In Dry Zone, Myanmar, Online and Phone survey about economy (Relevant Organization), survey on Plantation (Rice)
4.6.2	Awareness Raising	Advanced tailoring Training, Basic and advance sewing training, Awareness on Agriculture; fishery; livestock; small business, Balm production training, Basic gender concept and VSLA linkage with Economy, Basic Marketing concept, Bookkeeping training, Budget transparency awareness, Capacity on Business, Business Management awareness, Business plan awareness, cooking training, facial foam production training, family budgeting awareness, Financial Management, Flowering decoration training, Food processing awareness, Foot Massage training, Fruits preservation training, Hair and beauty training, Human Resource Management, Small Medium enterprise for women, Mechanic training, Ointment Production training, Winter crop planting training, small skill business training, Soap production, Trade and Business Law awareness, Training on managing income and expenditure, Value Change awareness, Vocational Training, VSLA, Women and leadership, Women and Economy, Wool Knitting Training
4.6.3	Implementa tion	Cash for work, Cooperating Business, Copy-book binding & computer typing enterprise, Credit program, Cross Visit, Distribution: Generator/livestock/seed/fertilizer/farming tools, Food processing, Income Generation activities, Infrastructure construction, Investment and marketing for sewing, Investment for beat production, Investment for small scale business, Provide Job Opportunities, Link with Market, Microfinance, Marketing, Providing job information, Providing skill training for IG option, Provide investment, Rice Bank, Revolving fund, Saving and loan, Self Help Group organizing, Special loan for small business, Value Added process
4.6.4	Policy Making	<b>National Level:</b> SME and FDI policy, Consumer Right, Policy Engagement with UMFCCI



**4.7 Women And Decision Making**

#	NSPAW Approach	Name of Topics/Activity
4.7.1	Research And Survey	KAP survey on Women and Decision Making, Women and Leadership research, Women participation and Decision Making role in Political parties in Myanmar research, Women percentage in the parliaments in Myanmar survey, Gender assessment in 10 villages
4.7.2	Awareness Raising	Capacity Building on decision making, CBO strengthening training, Civic Education awareness, Community Management course, Women group member activities and LWF Myanmar activities meeting, Empowerment training about 30% women quota and women leadership, Enhancing participation and promoting women leadership program, Gender training, Awareness to Village health fund development committee to improve women's participation in committee, Facilitation and mobilization awareness, Human Right awareness, Land Tenure awareness, Leadership training for women, Management training, Mentorship. Support member through mentorship program, Organization Development for CSO, Presentation skill, Provide negotiation, networking and advocacy skills training, SHG concept training and workshop, TOT on peace education, training for Census, Voter education training, Women Empowerment training, Women leadership, Women leadership music campaign, Women Right and Child Right, Women right over their body and sexual practices, Workshop on good governance , leadership and advocacy.
4.7.3	Implementation	Alumni activities( Alumni Club Formation & Alumni Women Forum), National youth Forum, Self Help Group committee meeting, Set quota for women. 50% of women in the committee, Grant, Youth & Politic program broadcasting at MRTV, 50% Women in Peer Education Program, Conduct meeting with women about LWF Myanmar activities and the expected responsibility of the women group members, 30% of Women Participation in all Activities, Support CSO to develop internal gender policy, Interethnic dialogue, networking ,cross visit, women's forum , Public campaign, forming women group, Public consultation on women and decision making, Advocacy
4.7.4	Policy Making	<b>Local Level:</b> Quota policy in organization activity, Gender policy for own organization, Party policy to promote women's participation in the parliament, women leadership <b>National Level:</b> Gender mainstreaming in Electoral Process, feedback on women role in 2008 constitution

**4.8 Institutional Mechanism for the advancement of women**

#	NSPAW Approach	Name of Topics/Activity
4.8.1	Research And Survey	No research and survey
4.8.2	Awareness Raising	Empowerment and Leadership, forum on women participation in peace process, Nomination Awareness, Political Training, Psycho Social Support Awareness, Security sector reform training to MPs, Voter Education and Voter Training
4.8.3	Implementation	Consultation Workshop, Election Observation, Forming SHG
4.8.4	Policy Making	<b>Local Level:</b> Security Sector reform training to MPs, Promoting women's role in Religious institution by laws

**4.9 Women And Human Rights**

#	NSPAW Approach	Name of Topics/Activity
4.9.1	Research And Survey	Gender assessment, HIV related Human Right, Survey on Justice, Land Campaign , Land Tenure Rights, Mapping of Business and Peace, Mapping of Gender and Peace, Opinion Pool, Political Parities Facts books, Rule of law and access to justice mapping, rural leadership and Institutional Analysis, Social and Cultural Norms Research, SWOT analysis for Solidarity and Development Party (USDP), Leadership and Institutional Studies (What Lies Beneath),
4.9.2	Awareness Raising	Active, Responsible and Democratic Citizenship, Basic Human Rights, CEDAW, Child Soldier Reducing awareness, Citizen Rights, Civic Education, Gender training, Convention on Biological Diversity, Disable and CEDAW, Disable Rights, Human mine Action Training, Human Rights Training, Human Trafficking, Indigenous Tribes Rights, Leadership & Organizational Development, Leadership and Women's right training, Leadership training, legal awareness, Life Skill, Mainstreaming Human Rights and Democratic Norms, Mine Awareness, Mine Risk Education, Original Management Training, , Para legal training, Peace training, Right based approach, UDHR, UNSCR awareness, UNSCR 1325, VAW, Voter Rights, Women and Rights ( CEDAW, NSPAW, Gender awareness, Human Rights, Land Rights and women rights, Constitution awareness, IEC) , Women leadership, Youth Program
4.9.3	Implementation	Establish Resource Center (women & Human Right), Women Forum, Consultation, Calling for "Ma Than Swan" Campaign, Celebration in International Women Day, Child soldier case ( relief& form child soldier club), Cross Visit, Disable Rights Law Draft Forum, Distribution Human Rights Books, Drawing action plan and implementation, Forming community care committee, Information, Counseling and Legal Assistance, Myanmar Disable conference, Networking with Lawyer, Small Grant, Women protection policy guideline, Women Rights Workshop (3 days)

## WON-GEN Member Mapping Report (September 2014-March 2015)

4.9.4	Policy Making	<p><b>Local Level:</b> Women Rights, Human Rights discussion, Ethnic Women Right</p> <p><b>National Level:</b> Land Right, Child Rights (CRRC), National Strategy on Mine Action (Draft), Initiate UK National Action Plan on Women Peace and Security</p>
-------	---------------	--

### 4.10 Women and the Media

#	NSPAW Approach	Name of Topics/Activity
4.10.1	Research And Survey	No Research and Survey
4.10.2	Awareness Raising	Disable talk, Media and Women
4.10.3	Implementation	Film and Music Entertainment, May Swan Yee Magazine, News Letter internal organization, Publication (Women who move and shake the sky),
4.10.4	Policy Making	No Policy Making

### 4.11 Women and the Environment

#	NSPAW Approach	Name of Topics/Activity
4.11.1	Research And Survey	Assessment of Inle Lake and Watershed, Environmental and Social Management Framework Assessment on Agriculture Development, Women Role for Sustainable Environment Management
4.11.2	Awareness Raising	Cleaning Campaign in their environment (collecting rubbish), Community Forestry, Environment Awareness, Environment Conservation, FPIC (Environment), GPS Training, REDD,
4.11.3	Implementation	Bio Gas and Fuel, Degraded Forest, Reforestation, Planting, Celebration of Environment day, Cross Visit, Consultation to women and CSO, Gardening, Degraded Forest, Disaster Risk Reduction Project, Distribution Poster and Video, Distribution Trees, Gardening, Mapping, Organic Farming, Planting, Soil Detention, Reforestation, Small Grant, Water Power
4.11.4	Policy Making	<b>National Level:</b> Community Forestry Law, Land Used Policy, Environmental Policy

### 4.12 The Girl Child

#	NSPAW Approach	Name of Topics/Activity
4.12.1	Research And Survey	No Research and Survey
4.12.2	Awareness Raising	Discussion for Life, Leadership & Girl Rights, Reproductive Health awareness, Saving Loan Training, Teenage Girls Training,
4.12.3	Implementation	2 years Girl Leadership Activities, Child Protection, Child Right, Child Soldier, Emergency case management, Girl leadership Campaign, Legal Aid, Nursery school, Nutrition, Only concerned with child labor in factors Summer Camp, VAW case support
4.12.4	Policy Making	No Policy

**Annex 5: WON-GEN member implementation per NSPAW indicators**

**Note:** Members working on respective NSPAW areas are already mentioned in Annex3: Name list of WON-GEN organizations and their partner implementation location per NSPAW area. The findings in this session based on the organization working on respective NSPAW area only.

<b>1</b>	<b>Women and Livelihood</b>
<b>1.1</b>	<b>Research and Surveys</b>
(1)	Women's participation in livelihoods in both the formal and informal sectors.
(2)	Analysis of the current situation of women's equal inclusion in land and agrarian reform.
(3)	Need for women's livelihoods and women's livelihood opportunities.
(4)	Women's representation in technical positions and their participation in decision-making in Departments concerned with women's livelihoods.
(5)	Women's participation in livelihoods, including the participation of women-led households and women with disabilities.
<b>Findings:</b>	
<ul style="list-style-type: none"> <li>▪ Organizations who conduct research and surveys apply all the above indicators.</li> </ul>	
<b>1.2</b>	<b>Awareness Raising</b>
(1)	Implement awareness raising activities for male and female staff in designated focal Ministries and with duty bearers, at national, regional and local levels, responsible for the advancement of women's livelihoods (including CEDAW, the Beijing Platform for Action, and the Millennium Development Goals).
(2)	To increase the capacity of women in urban and rural areas to implement community-based initiatives by collaborating with women's organizations.
(3)	To provide women with access to information about livelihoods.
<b>Findings:</b>	
<ul style="list-style-type: none"> <li>▪ Many organizations using awareness raising approach but very few organization apply all three indicators.</li> <li>▪ Most of the organizations apply indicator 2 and indicator 3 but not indicator 1. The indicator one need to work with Governemnt Ministries for their staff capacity building.</li> </ul>	
<b>1.3</b>	<b>Implementation</b>
(1)	Practical initiatives supported by designated focal Ministries that focus on social protection mechanisms for women, new livelihoods programmes for women living in poverty, and equal treatment in land and agrarian reforms.
(2)	Increase in the number of women in decision-making positions of institutions, Departments and NGOs concerning livelihoods.
(3)	Establish information centres where women, including women with disabilities, can have access to finding work and information.
(4)	Free or paid access for women in urban or rural areas to vocational training and marketable livelihoods that are relevant to location.
<b>Findings:</b>	
<ul style="list-style-type: none"> <li>▪ Members do not apply indicator number 1 which is mainly releted with Government responsibilities. But they apply the rest indicators when they implement women's and livelihood activities.</li> </ul>	
<b>1.4</b>	<b>Budget and Policy Making</b>
(1)	Allocation of budget, human and material resources to the abovementioned activities by all

## WON-GEN Member Mapping Report (September 2014-March 2015)

	stakeholders including Government and non-Government organizations.
(2)	Review, development and application of laws, policies and procedures for the advancement of women's livelihoods in accordance with CEDAW, the Beijing Platform for Action and the Millennium Development Goals.
(3)	Increase in the participation of women in developing and implementing these policies.
<b>Findings:</b>	
<ul style="list-style-type: none"> <li>▪ Members who apply Budget and Policy Making approach apply all three indicators. But very few organization, only 8 organization working on policy making.</li> </ul>	
<b>2</b>	<b>Women, Education and Training</b>
<b>2.1</b>	<b>Research and Surveys</b>
(1)	Access to formal and non-formal education for women in urban and rural areas.
(2)	Real access to formal and non-formal education for women in spheres such as science, technology and industry, areas widely considered as only suitable for men.
(3)	The participation of women in senior decision-making, technical and professional positions in formal and non-formal education sectors including universities, colleges and Government Departments.
(4)	The rates of women, girls, boys and men in formal and non-formal education with regard to literacy, school enrolment, completion, retention and those who abandon education.
(5)	The main obstacles of access to education for women.
<b>Findings:</b>	
<ul style="list-style-type: none"> <li>▪ When member conducted research, they apply indicators 3 &amp; 5 but not 1, 2 and 4.</li> </ul>	
<b>2.2</b>	<b>Awareness Raising</b>
(1)	Implement awareness raising activities for male and female staff in designated focal Ministries and with duty bearers, at national, regional and local levels, responsible for formal and non-formal education (including CEDAW, the Beijing Platform for Action, and the Millennium Development Goals).
(2)	To raise the awareness of women in urban and rural areas on the benefits of education for women, and to implement community based initiatives through collaborating with women organizations.
(3)	To reduce and eliminate customs, superstitions and beliefs those are obstacles to the right of education for women.
<b>Findings:</b>	
<ul style="list-style-type: none"> <li>▪ Member working on awareness raising apply indicators number two most.</li> <li>▪ Very few organizations apply all three indicators in their awareness raising program and project.</li> </ul>	
<b>2.3</b>	<b>Implementation</b>
(1)	Practical initiatives supported by designated focal Ministries that focus on the inclusion of human rights, sex and gender equality education in both formal and non-formal curricula.
(2)	Provision of scholarships and the right to free education for women in both urban and rural areas.
(3)	Practical trainings, vocational trainings and skills building support for women.
(4)	Increase in the number of women in decision-making positions in Government Departments related to education and training.
<b>Findings:</b>	
<ul style="list-style-type: none"> <li>▪ All four indicators are applied. Out of four indicators, the Indicator number 3 is mostly applied by all organizations who are working on implementations.</li> </ul>	
<b>2.4</b>	<b>Budget and Policy Making</b>
(1)	Allocation of budget, human and material resources to the above-mentioned activities by all

## WON-GEN Member Mapping Report (September 2014-March 2015)

	stakeholders including Government and non-Government organizations.
(2)	Implementation of policies on women's right to education not only in border areas but also in areas of Myanmar with difficult access to transport.
(3)	To develop and implement non-formal education activities in areas where formal education is inaccessible, especially for women.
(4)	To develop policies to promote the right to education for women with disabilities.
(5)	To develop policies that encourage the school environment to be safe and a place of dignity for women.
(6)	Review, development and application of laws, policies and procedures related to formal and non-formal education and training programs for women in accordance with CEDAW, the Beijing Platform for Action and the Millennium Development Goals.
(7)	Increase in the participation of women in the development and implementation of these policies.
<b>Findings:</b>	
<ul style="list-style-type: none"> <li>▪ Out of 7 indicators, the members apply only 3 indicators which are number 4,6 &amp; 7.</li> <li>▪ None of the organizations apply indicators number 1,2,3 &amp; 5 in their budget and policy making works.</li> </ul>	
<b>3</b>	<b>Women and Health</b>
<b>3.1</b>	<b>Research and Surveys</b>
(1)	Women's access to and utilization of basic health, sexual and reproductive health cares.
(2)	Women's participation in decision-making for sexual and reproductive health, including family planning.
(3)	Women's role in decision-making for HIV prevention, care and treatment, and women's access to and utilization of HIV prevention, care and treatment services.
(4)	Barriers to women's access and use of basic health, sexual and reproductive health cares.
(5)	Women's participation in senior, technical and professional positions and decision-making within Government Departments related to health cares.
<b>Findings:</b>	
<ul style="list-style-type: none"> <li>▪ Out of 5 indicators the members are applied number 1 to 4 except indicator number 5.</li> </ul>	
<b>3.2</b>	<b>Awareness Raising</b>
(1)	Implement awareness raising activities for male and female staff in designated focal Ministries and with duty bearers, at national, regional and local levels, responsible for health care (including CEDAW, the Beijing Platform for Action, the Millennium Development Goals)
(2)	To raise awareness of not only women but also men and teenagers on basic health, sexual and reproductive health, HIV and sexually transmitted infections, treatment, care and support, and to implement community-based initiatives by collaborating with women's organizations.
(3)	To reduce and eliminate customs, superstitions and beliefs that are obstacles to women's access to, and use of basic health, sexual and reproductive health care.
<b>Findings:</b>	
<ul style="list-style-type: none"> <li>▪ Only 1% of organization who are working on awareness raising apply all three indicators. 99% are working on awareness raising but do not match with the above mentioned indicators.</li> <li>▪ It indicates members need to aware Women and Health awareness raising indicators.</li> </ul>	
<b>3.3</b>	<b>Implementation</b>
(1)	Practical initiatives supported by designated focal Ministries on the development and implementation of health programmes that focus on women's health problems, sexual and

## WON-GEN Member Mapping Report (September 2014-March 2015)

	reproductive health and rights.
(2)	Data disaggregation by sex, ethnicity and location in health-related surveys, studies and health management information systems.
(3)	Increase in the number of women participating in decision-making in Government Departments related to health.
(4)	Rural area-oriented activities for basic health, sexual and reproductive health care, prevention, treatment, care and support of HIV/AIDS and sexually transmitted diseases.
(5)	Provision of free contraception for women living in poverty.
(6)	Adolescent sexual and reproductive health care services to prevent underage pregnancies and the transmission of sexually transmitted infections.
<b>Findings:</b>	
<ul style="list-style-type: none"> <li>▪ All six indicators are applied except number 6 which is SRH health care services for Adolescent to prevent unwanted pregnancies and STI infection. Organizations provide awareness on this health issues but less service provision are founded in their works.</li> </ul>	
<b>3.4</b>	<b><i>Budget and Policy Making</i></b>
(1)	Allocation of budget, human and material resources to the abovementioned activities by all stakeholders including Government and non-Government organisations.
(2)	Implementation of policies on women's access to health care services, not only in border areas but also in areas of Myanmar with difficult access to transport.
(3)	Review, development and application of the laws, policies and procedures related to women's health care, in accordance with CEDAW, the Beijing Platform for Action and the Millennium Development Goals.
(4)	Increase in the participation of women in the development and implementation of these policies.
<b>Findings:</b>	
<ul style="list-style-type: none"> <li>▪ Members working on Budget and Policy Making apply only indicator number 1 &amp; 4. They do not apply indicator 2&amp;3, which are mainly, concern with review, revise and ensure to implement policities.</li> </ul>	
<b>4</b>	<b><i>Violence Against Women</i></b>
<b>4.1</b>	<b><i>Research and Surveys</i></b>
(1)	All forms of violence against women and girls in urban and rural areas.
(2)	Causes and consequences of violence.
(3)	Social services for women affected by violence, legal protective measures, and the challenges faced by women accessing these services.
(4)	Satisfaction levels with the responses duty bearers give to women and girls who report violence.
<b>4.2</b>	<b><i>Awareness Raising</i></b>
(1)	Implement awareness raising activities for male and female staff in designated focal Ministries and with duty bearers, at national, regional and local levels, responsible for the prevention and appropriate responses to all forms of violence against women and girls (including CEDAW, the Beijing Platform for Action, and the Millennium Development Goals)
(2)	To implement awareness raising activities on CEDAW which describe all forms of discrimination against women as a violation of human rights.
(3)	To provide special training to judicial officers to ensure the upholding of dignity and human rights of women and girls affected by violence when taking legal action.
(4)	To build the capacity of the Myanmar Police Force, judicial officers, health care staff and volunteers to actively respond to, and prevent all forms of violence against women and girls.

## WON-GEN Member Mapping Report (September 2014-March 2015)

(5)	To raise awareness of the general public through the media to eliminate all forms of violence against women and girls.
(6)	To implement community-based initiatives in preventing and responding to all forms of violence against women and girls.
(7)	To increase men's participation in preventing and responding to all forms of violence against women and girls.
<b>4.3</b>	<b>Implementation</b>
(1)	Practical initiatives supported by designated focal Ministries that focus on: taking legal action against the perpetrators of violence against women and girls and human-trafficking; providing counselling to women and girls that ensures dignity and safety; effective treatment, care and protection for women and girls affected by violence.
(2)	Ensure that all women and girls affected by violence have access to services, in both urban and rural areas.
(3)	Establishment of community-based working committees comprised of both male and female members, at community, village and township levels, to take legal action and prevent violence against women.
(4)	Opening of one-stop services at national, regional and local levels to provide counselling, legal services, health care services and other social services for women who are affected by and vulnerable to violence.
(5)	To take legal action against perpetrators as well as to provide them with counselling and other awareness raising.
<b>4.4</b>	<b>Budget and Policy Making</b>
(1)	Allocation of budget, human and material resources to the abovementioned activities by all stakeholders including Government and non-Government organizations.
(2)	Implementation of policies to take legal action against perpetrators and to provide counselling and other awareness raising.
(3)	Review, development and application of laws and policies related to women's protection in accordance with CEDAW, the Beijing Platform for Action and the Millennium Development Goals.
(4)	Increase in the participation of women in the development and implementation of these policies.
<b>Findings:</b>	
<ul style="list-style-type: none"> <li>▪ Although very few organizations working on VAW all of them apply all indicators.</li> </ul>	
<b>5</b>	<b>Women and Emergencies</b>
<b>5.1</b>	<b>Research and Surveys</b>
(1)	Women knowing where to go to access general emergency information and services in emergencies.
(2)	Women, especially those displaced, who have access to appropriate and effective humanitarian assistance.
(3)	Women's participation in preparedness, responses and disaster risk reduction.
<b>Findings:</b>	
<ul style="list-style-type: none"> <li>▪ All three indicators are applied in research and surveys.</li> </ul>	
<b>5.2</b>	<b>Awareness Raising</b>
(1)	Implement awareness raising activities for male and female staff in designated focal Ministries and with duty bearers, at national, regional and local levels, responsible for addressing the needs of women and girls in emergencies (including CEDAW, the Beijing Platform for Action, and the Millennium Development Goals).
(2)	To raise awareness amongst relief and humanitarian actors to be able to understand and have the capacity to respond to violence against women and gender issues in emergencies.



## WON-GEN Member Mapping Report (September 2014-March 2015)

(3)	To raise awareness and implement community-based initiatives for preparedness, response and disaster risk reduction.
<b>Findings:</b>	
<ul style="list-style-type: none"> <li>▪ All three indicators are applied in awareness rising.</li> </ul>	
<b>5.3</b>	<b>Implementation</b>
(1)	Practical initiatives supported by designated focal Ministries that focus on training, technical support, improved recording and handling of cases of violence against women by police, military, local authorities, community-based organizations and other agencies as well as a Plan of Action addressing Security Council Resolutions about conflict-related sexual violence.
(2)	Women's equal access to protection, resources, benefits and services in natural disasters and conflict situations.
(3)	Equitable representation of female and male members in preparedness/relief/response/resettlement and civil society-based working committees.
<b>Findings:</b>	
<ul style="list-style-type: none"> <li>▪ Members apply indicator number 2 &amp; 3 only. Number one indicator does not apply by anyone.</li> </ul>	
<b>5.4</b>	<b>Budget and Policy Making</b>
(1)	Allocation of budget, human and material resources to the above-mentioned activities by all stakeholders including Government and non-Government organizations.
(2)	Development and application of laws and policies related to disaster management and risk reduction to fulfil and respond to the needs of women and to ensure their equal rights.
(3)	Increase in the participation of women in the development and implementation of these policies.
<b>Findings:</b>	
<ul style="list-style-type: none"> <li>▪ Only indicator number one is applied. The rest two indicators regards with law development and increase in the participation of women in the law development are not applied.</li> </ul>	
<b>6</b>	<b>Women and the Economy</b>
<b>6.1</b>	<b>Research and Surveys</b>
(1)	Women's participation in the public and private economic sectors.
(2)	The challenges women face accessing economic opportunities, their economic needs, and utilization of, and access to resources.
(3)	Women's participation in region-specific, marketable incomegenerating activities.
(4)	The economic opportunities and needs of women-led households.
(5)	The economic opportunities and needs of women with disabilities and their participation in the economy.
(6)	Assessment of the situation of female migrant workers.
(7)	Disparities in wages between women and men.
(8)	The sexual harassment of women at the workplace and workplace responses, including reporting.
(9)	Women's participation and decision-making in technical and professional positions of Government Departments related to economy.
<b>Findings:</b>	
<ul style="list-style-type: none"> <li>▪ Indicators number 6,8 and 9 are not applied which are research/survey on situation of female migrant worker, sexual harassment in workplace and reporting system, women's participation and decision making in technical and professional positions of Government Department related to economy.</li> </ul>	
<b>6.2</b>	<b>Awareness Raising</b>
(1)	Implement awareness raising activities for male and female staff in designated focal

## WON-GEN Member Mapping Report (September 2014-March 2015)

	Ministries and with duty bearers, at national, regional and local levels, responsible for the economy and development projects (including CEDAW, the Beijing Platform for Action, the Millennium Development Goals).
(2)	To raise awareness and to implement community-based initiatives related to the economic capacity building of women in urban and rural areas.
(3)	To implement awareness rising of employers and employees to understand labour laws, equitable workplace practices including gender equality, non-discrimination and community-based initiatives.
(4)	To provide women with access to information about the economic sector.
(5)	To reduce and eliminate customs, superstitions and beliefs that are obstacles to women's access and use of information about the economic sector, and to implement community-based initiatives.
<b>Findings:</b>	
<ul style="list-style-type: none"> <li>▪ All five indicators are applied.</li> </ul>	
<b>6.3</b>	<b>Implementation</b>
(1)	Practical initiatives supported by designated focal Ministries that focus on livelihood initiatives that: provide equal access to employment and resources; promote balance between household work and income generation; promote quota systems for women in economic management; implement workplace policies about equal pay for equal work and non-harassment.
(2)	Increase in the number of women participating in the decision making of agencies and Government Departments related to the economy and development projects.
(3)	Identification and implementation of projects that give specific priority to economic opportunities for women and their rights.
(4)	Service centres where women, including women with disabilities, can access employment opportunities and get information.
(5)	Development of women's access to employment, credit, resources, assets and economic benefits.
(6)	Initiatives giving priority to women's rights and security in the workplace.
<b>Findings:</b>	
<ul style="list-style-type: none"> <li>▪ Only indicator 3 and 5 are applied. Indicators 1,2 &amp; 4 are about practical initiative support by focal Ministries regards with women and economy, policy making, establish service centers including women with disabilities to access employment opportunities.</li> </ul>	
<b>6.4</b>	<b>Budget and Policy Making</b>
(1)	Allocation of budget, human and material resources to the above- mentioned activities by all stakeholders including Government and non-Government organisations.
(2)	Review, development and application of laws, policies and procedures related to the economy, development projects and the workplaces of women, that are in accordance with CEDAW, the Beijing Platform for Action and the Millennium Development Goals.
(3)	Implementation of specific policies related to economic opportunities for women and their rights, including women with disabilities, women migrant workers and women-led households.
(4)	Increase in the participation of women in the development and implementation of these policies.
<b>Findings:</b>	
<ul style="list-style-type: none"> <li>▪ No indicators are applied in this approach.</li> </ul>	
<b>7</b>	<b>Women and Decision-Making</b>
<b>7.1</b>	<b>Research and Surveys</b>

## WON-GEN Member Mapping Report (September 2014-March 2015)

(1)	Women's participation in decision-making in Government including Parliaments, Parliamentary Committees, Ministries, Departments and political parties - at all levels.
(2)	Women's participation in senior, technical and professional positions and in the decision-making processes of Government Departments, and the challenges they face.
(3)	The visibility and frequency of reporting in the media of women decision-makers in Government and the private sector.
<b>Findings:</b> Two out of three indicators are applied. Only indicator number 3 is missing to apply.	
<b>7.2</b>	<b><i>Awareness Raising</i></b>
(1)	Implement awareness raising activities to promote policy change related to women's representation and participation in decision making and in national level positions in Parliaments, Parliamentary Committees, Ministries, and Departments and political parties at all levels.
(2)	To raise awareness and gain the acceptance of the general public on the benefits of women's participation in leadership and decision making.
(3)	Raise awareness to address harmful customary laws and gender discriminatory practices that are identified as barriers to women's participation in leadership and decision-making.
(4)	Raise awareness of the media about increasing the visibility and frequency of women decision-makers in Government and the private sector in the media.
<b>7.3</b>	<b><i>Implementation</i></b>
(1)	Practical initiatives focusing on the provision of information for women about public affairs.
(2)	Mentoring programmes for female parliamentarians to improve leadership and decision-making skills.
(3)	Activities to increase women's engagement with electoral processes.
(4)	Application of quota systems to ensure women's participation in decision-making in legislative, judicial and executive bodies.
(5)	Implementation of community-based initiatives, including youth focused activities, to address harmful customs, laws and gender discriminatory practices that can be barriers to women's participation in leadership and decision-making.
(6)	Capacity building for future women leaders on leadership and negotiation skills.
(7)	Women's participation in leadership and decision-making and its benefits to be visible in the media and with increased frequency of reporting.
<b>7.4</b>	<b><i>Budget and Policy Making</i></b>
(1)	Allocation of budget, human and material resources to the above mentioned activities by all stakeholders including Government and non-Government organizations.
(2)	Review, development and application of the rules, structures, systems and policies at all levels of Government related to women's participation in leadership and decision-making.
(3)	Review, development and application of laws, policies and procedures related to formal and non-formal education and skills training for women in accordance with CEDAW, the Beijing Platform for Action and the Millennium Development Goals.
(4)	Increase in the participation of women in the development and implementation of these policies.
<b>Findings:</b> <ul style="list-style-type: none"> <li>▪ All the indicators from awareness raising, implementation, budget and policy making are applied.</li> </ul>	
<b>8</b>	<b><i>Institutional Mechanism for the Advancement of Women</i></b>
<b>8.1</b>	<b><i>Research and Surveys</i></b>
(1)	Assessment of opinion, policy and procedures on gender issues in designated focal Ministries and Departments responsible for implementing the National Strategic Plan for the

## WON-GEN Member Mapping Report (September 2014-March 2015)

	Advancement of Women.
(2)	Review of existing laws and the identification of those that pose barriers to women's advancement.
(3)	Establishment of advancement mechanisms such as a Ministry of Women Affairs, and a Parliamentary Committee on Women related to progress toward the 12 Priority Areas in this Plan.
<b>8.2</b>	<b><i>Awareness Raising</i></b>
(1)	Implement awareness raising activities for male and female staff in designated focal Ministries and with duty bearers, at national, regional and local levels responsible for Strategic Plan (including CEDAW, the Beijing Platform for Action, the Millennium Development Goals)
(2)	Implementation of public awareness activities about the importance of the advancement of the women.
<b>8.3</b>	<b><i>Implementation</i></b>
(1)	Establishment of Gender Focal Points in designated Ministries with clear terms of reference that include authority and responsibilities.
(2)	Timely reporting to the CEDAW Committee, taking action to address CEDAW Committee observations, and implementing CEDAW recommendations.
(3)	Strengthen the existing mechanisms for the advancement of women at national, regional and local levels.
<b>8.4</b>	<b><i>Budget and Policy Making</i></b>
(1)	Allocation of budget, human and material resources to the above mentioned activities by all stakeholders including Government and non-Government organizations.
(2)	Review, development and application of rules and regulations, structure, system and policies to improve women's participation in national development strategies and processes.
(3)	Increase in the participation of women in the development and implementation of these policies
<b>Findings:</b>	
<ul style="list-style-type: none"> <li>▪ Very few organizations are working on Institutional Mechanism for the Advancement of women. Only 7 organizations but none of them match the indicators of four approaches.</li> </ul>	
<b>9</b>	<b><i>Women and Human Rights</i></b>
<b>9.1</b>	<b><i>Research and Surveys</i></b>
(1)	Understanding of women's rights within Government including Parliaments, Parliamentary Committees, Ministries, Department and political parties - at all levels.
(2)	Public awareness, including ethnic and minority groups, on the rights of women.
(3)	Agencies working on the fulfilment of the rights of women, and their effectiveness.
(4)	Government and private sector recognition of the role of business and corporate social responsibility to protect women's human rights.
(5)	Representation of women in Human Rights Bodies/Committees.
(6)	Human Rights Bodies/Committees systematically acknowledge and address rights-related needs and aspirations of women.
(7)	Reporting on the rights of women in the media and the frequency of reporting.
<b>Findings:</b>	
<ul style="list-style-type: none"> <li>▪ Only indicators number 3 is applied. The rest six indicators are not applied.</li> </ul>	
<b>9.2</b>	<b><i>Awareness Raising</i></b>
(1)	Implement awareness raising activities for male and female staff in designated focal Ministries and with duty bearers to understand the rights of women and girls and the State's obligation to fulfil these rights in accordance with CEDAW, the Beijing Platform for Action,

WON-GEN Member Mapping Report (September 2014-March 2015)

	the Millennium Development Goals.
(2)	To observe and disseminate existing laws that have a direct positive impact on the rights of women.
(3)	To raise awareness of the general public on the rights of women.
(4)	To raise awareness of the media on the rights of women.
<b>Findings:</b>	
<ul style="list-style-type: none"> <li>▪ Members apply indicator number two, three and four except indicator number one as it is more related with Government responsibilities.</li> </ul>	
<b>9.3</b>	<b>Implementation</b>
(1)	National statistics, surveys and information management systems related to the analysis of data on the status of human rights, including the areas of marriage and inheritance.
(2)	Effectively implement CEDAW and related international conventions.
(3)	Implement efficient mechanisms to ensure the rights of women are fulfilled at national, regional, state, district, township and community/village levels.
(4)	Implement community-based initiatives to raise public awareness on the rights of women.
(5)	Improve coverage on the rights of women in the media.
<b>Findings:</b>	
<ul style="list-style-type: none"> <li>▪ Organization working on Women and Human Rights implementation apply indicators number one to four but not number five which is improve coverage on the rights of women in the media.</li> </ul>	
<b>9.4</b>	<b>Budget and Policy Making</b>
(1)	Allocation of budget, human and material resources to the above- mentioned activities by all stakeholders including Government and non-Government organizations.
(2)	Revision, development and application of existing civil, religious and customary laws so as to protect, promote and fulfil the human rights of women and girls.
(3)	Development and implementation of policies to protect and promote the human rights of women in accordance with the recommendations of key stakeholders and international laws and instruments.
<b>Findings:</b>	
<ul style="list-style-type: none"> <li>▪ All indicators are applied.</li> </ul>	
<b>10</b>	<b>Women and the Media</b>
<b>10.1</b>	<b>Research and Surveys</b>
(1)	Portrayal of empowered women in the media in broadcasting and publishing.
(2)	Media professionals' acknowledgement and acceptance of gender stereotyping and discrimination against women.
(3)	The media's portrayal of gender stereotyping and discrimination against women.
(4)	The media's showcasing of programmes that benefit women.
(5)	Women's participation and decision-making in senior, technical and professional positions of media-related agencies and Departments.
<b>Findings:</b>	
<ul style="list-style-type: none"> <li>▪ No organization conduct research and Surveys on Women and Media</li> </ul>	
<b>10.2</b>	<b>Awareness Raising</b>
(1)	Implement awareness raising activities for designated focal Ministries, duty bearers and media professionals that include CEDAW, the Beijing Platform for Action, and the Millennium Development Goals.
(2)	Raise awareness of media professionals of the need to reduce gender stereotyping and discrimination against women in their workplaces.
(3)	Adopt a balanced approach to portraying women as empowered members of society.

<b>Findings:</b>	
<ul style="list-style-type: none"> <li>▪ Only four organization working on awareness raising for women's and media but none of the indicators match.</li> </ul>	
<b>10.3</b>	<b>Implementation</b>
(1)	Publish and disseminate international conventions including CEDAW, the Beijing Platform for Action and the Millennium Development Goals in user-friendly formats for public awareness.
(2)	Broadcast and publish media programmes that have a direct impact on the rights of women.
(3)	Pro-actively reduce gender stereotyping and discrimination against women in the media.
(4)	Include the constructive engagement and support of men in the advancement of women in the media.
(5)	Provide easy access to books, literature and videos related to the advancement of women in community-based libraries.
(6)	Increase the participation and decision-making of women in senior, technical and professional positions in agencies and Departments related to the media.
<b>Findings:</b>	
<ul style="list-style-type: none"> <li>▪ 5 organizations implementating women's and media but only 1 orgnization apply indicator number (3) only. The rest 4 organizations do not apply any indicators.</li> </ul>	
<b>10.4</b>	<b>Budget and Policy Making</b>
(1)	Allocation of budget, human and material resources to the above- mentioned activities by all stakeholders including Government and non Government organizations.
(2)	Implementation of policies to promote the rights and the advancement of women in broadcasting and in publishing.
(3)	Revision, development and application of media laws and policies in accordance with CEDAW Committees recommendations.
(4)	Increase in the participation of women in the development and implementation of these policies.
<b>Findings:</b>	
<ul style="list-style-type: none"> <li>▪ No organization working on Budget and Policy Making.</li> </ul>	
<b>11</b>	<b>Women and the Environment</b>
<b>11.1</b>	<b>Research and Surveys</b>
(1)	Integration of the importance of gender issues in designated focal Ministries on the management of natural resources, environmental conservation, and adaptation and responding to climate change.
(2)	Women's participation in Departments, agencies, and committees related to the management of natural resources, environmental conservation, and adaptation and responding to climate change.
(3)	Impact of climate and environmental changes on women.
(4)	Development of the living standards of women in urban and rural areas including adequate living conditions, sanitation, electricity and water supply according to Article 14.2g of CEDAW.
<b>Findings:</b>	
<ul style="list-style-type: none"> <li>▪ All four indicators are applied.</li> </ul>	
<b>11.2</b>	<b>Awareness Raising</b>
(1)	Implement awareness raising activities for male and female staff in designated focal Ministries and with duty bearers at national, regional and local levels in order to increase understanding about the different impacts on women and men.
(2)	To provide training and raise awareness on community-based natural resource management, environmental conservation, and adaptation and response to climate change, where equal numbers of women and men are included.

## WON-GEN Member Mapping Report (September 2014-March 2015)

<b>Findings:</b>	
<ul style="list-style-type: none"> <li>▪ No indicators are applied.</li> </ul>	
<b>11.3</b>	<b>Implementation</b>
(1)	Practical initiatives supported by designated focal Ministries that focus on capacity building, training, providing access to suitable technology and information.
(2)	Programmes to ensure that women become competent in technologies related to natural resource management, environmental conservation, and adaption and response to climate change.
(3)	Equal participation of women and men in designated focal Ministries and organizations that are responsible for natural resources management, environmental conservation, adaptation to and response to climate change.
<b>Findings:</b>	
<ul style="list-style-type: none"> <li>▪ No indicators applied.</li> </ul>	
<b>11.4</b>	<b>Budget and Policy Making</b>
(1)	Allocation of budget, human and material resources to the above- mentioned activities by all stakeholders including Government and non Government organisations.
(2)	Review, development and application of laws and policies related to environmental management and conservation that respond to the needs of women and ensure their equal rights.
(3)	Increase in the participation of women in the development and implementation of these policies.
<b>Findings:</b>	
<ul style="list-style-type: none"> <li>▪ No organization working on budget and policy makng of womne's and environment.</li> </ul>	
<b>12</b>	<b>The Girl Child</b>
<b>11.1</b>	<b>Research and Surveys</b>
(1)	Understanding about girls' rights in Government, including the Parliaments, Parliamentary Committees, Ministries, Departments and political parties - at all levels.
(2)	Practical initiatives supported by designated focal Ministries to provide access to, and to protect girls' rights.
(3)	Reports on girls' rights violations and processing of these cases by Committees on the Rights of the Child at national, state, regional, district and township levels.
(4)	The social needs of girls including the need for sexual and reproductive health and education.
(5)	Records related to adolescent health, child trafficking and child prostitution.
<b>11.2</b>	<b>Awareness Raising</b>
(1)	Implement awareness raising activities for male and female staff in designated focal Ministries and with duty bearers so as to understand the rights of the Girl Child and the responsibilities of the State to fulfil their rights in accordance with CEDAW, the Beijing Platform for Action, the Millennium Development Goals and the UN Convention on the Rights of the Child (CRC).
(2)	Implement awareness raising activities for the general public on girls' rights.
(3)	Implement community-based awareness raising activities to reduce and eliminate customs, superstitions and beliefs that are obstacles to girls' advancement, that promote child marriage, and that discourage girls from accessing education.
(4)	Implement awareness raising activities for media professionals so as to understand girls' rights.
<b>11.3</b>	<b>Implementation</b>
(1)	Practical initiatives supported by designated focal Ministries to promote girls' right to education, basic health, sexual and reproductive health including the minimum age of

## WON-GEN Member Mapping Report (September 2014-March 2015)

	marriage, antichild prostitution and anti-trafficking of girls; and to respect laws that protect girls' rights.
(2)	Implement community-based actions to fulfil girls' rights through participatory approaches.
(3)	Effectively implement CEDAW, the UN Convention on the Rights of the Child and other international conventions.
(4)	Promote the rights of the Girl Child in the media with increased frequency.
<b>Findings:</b>	
<ul style="list-style-type: none"> <li>▪ Very few organizations working on the Girl Child. Organization those who are working on research and survey, awareness raising and implementation do not match the indicators of respective approaches.</li> </ul>	
<b>11.4</b>	<b><i>Budget and Policy Making</i></b>
(1)	Allocation of budget, human and material resources to the above-mentioned activities by all stakeholders including Government and non Government organizations.
(2)	Review, development and application of laws and policies related to the rights of the Girl Child and in accordance with CEDAW, the Beijing Platform for Action and the Millennium Goals.
(3)	Increase in participation of women in the development and implementation of these policies.
<b>Findings:</b>	
<ul style="list-style-type: none"> <li>▪ No organizations working on Budget and Policy Making of the Girl Child</li> </ul>	



**Annex 6: Target Group per NSPAW area**

<b>NSPAW Area</b>	<b>Targets group per NSPAW area</b>
Women and Livelihoods	<p><b>General Community:</b> Community, Men and Women, Farmer Group, Fisher Men Group, Poor People, Youth</p> <p><b>Women:</b> Women, Women headed household, Grassroots Women, Lactating Mother,</p> <p><b>Children:</b> Primary School Student, Street Children, Student, Children Under 18, Children Under 5,</p> <p><b>High Risk &amp; Vulnerable:</b> vulnerable People, Deaf People, Disable, LGBT, PLHIV, IDP Camp, Migrant, Old People, Orphan</p> <p><b>CBO/NGO:</b> CSO, CBO Staff, NGO staff, Partner Member, SHG Member, own member</p> <p><b>Government:</b> School Teacher</p>
Women, Education and Training	<p><b>General Community:</b> Community, Men and Women, Farmer Group, Fisher Men Group, Poor People, Youth, Mid Level Manager, Factory Worker, Migrant Worker, University Student, Men And Women,</p> <p><b>Women:</b> Women, Women headed household, Grassroots Women, Mon Women</p> <p><b>Children:</b> Primary School Student, High School Student, Street Children, Student, Children Under 18, Children Under 5, Drop out school girl, Drop Out Student, Girls,</p> <p><b>High Risk &amp; Vulnerable:</b> vulnerable People, Blind People, Deaf People, Disable, LGBT, PLHIV, IDP Camp, Migrant, Old People, Orphan, MSM, Sex Worker,</p> <p><b>Leaders:</b> Ethnic Leader, Religious Leader, Student Leader, Women Org Leader, Women Leader</p> <p><b>CBO/NGO :</b> CSO, CBO &amp; LINGO, CBO Staff, NGO staff, Partner Member, SHG Member, own member, Interfaith Group, Volunteer,</p> <p><b>Political Party:</b> Political Party Member,</p> <p><b>Government:</b> Council of Minister, DSW Staff, Member of Parliament, Teacher, Ministries of Social Welfare, Relief and Resettlement</p>
Women and Health	<p><b>General Community:</b> Community, Men and Women, Farmer Group, Poor People, Youth, Factory Worker, Migrant Worker, Garment Worker, TB Patient,</p> <p><b>Women:</b> Women, Grassroots Women, Lactating mother, Mon Women, Women at Reproductive Age, Pregnant, Lactating mother,</p> <p><b>Children:</b> Children, Drop Out Student, Street Children, Student, Children under 18, Children under 5, Primary School Student,</p> <p><b>High Risk &amp; Vulnerable:</b> People, Deaf People, Disable, LGBT, PLHIV, IDP Camp, Migrant, Old People, Orphan, MSM, Sex Worker, Prisoner,</p> <p><b>CBO/NGO :</b> CBO Staff, NGO staff, Partner staff, SHG Member, own member, Interfaith Group, Volunteer,</p> <p><b>Government:</b> Doctors, Nurses,</p>

WON-GEN Member Mapping Report (September 2014-March 2015)

Violence Against Women	<p><b>General Community:</b> Community, Factory Worker, Media Persons, Migrant People, Men And Women, Rubber Collector, University Student, Youth, Camp, Girls, Student,</p> <p><b>Women:</b> Women, Grassroots Women, Youth Women</p> <p><b>Children:</b> Children, Drop Out Student, Monastic School Student, Street Children, Children Under 18,</p> <p><b>Vulnerable:</b> Vulnerable People, PLHIV, Poor People, MSM, IDPs, Sex Worker,</p> <p><b>Leaders:</b> Women Leader, Women Org Leader, Student Leader</p> <p><b>CBO/NGO:</b> CBO &amp; LNGO, CBO Staff,CSO, SHG Member, Old People, Orphan, Member, Partner Member,</p> <p><b>Political Party:</b> Political Party Member,</p> <p><b>Government:</b> Government Ministries, Ministries of Social Welfare, Relief and Resettlement, Member of Parliament, Teacher</p>
Women and Emergencies	<p><b>General Community:</b> Community, Men And Women, Old People,</p> <p><b>Women:</b> Women, Women at Reproductive Age,Lactating mother,Women Under 18, Grassroots Women,Pregnant, Camp, Student, Youth</p> <p><b>Children:</b> Drop Out Student, Monastic School Student, Street Children, Children Under 18,</p> <p><b>High Risk &amp; Vulnerable:</b> Disable People, Disaster affected community, IDPs, Orphan, Poor People, Prisoner,<b>Leaders:</b> Religious Leader, Leader,</p> <p><b>CBO/NGO:</b> CBO Staff,Partner Staff,Community Based Disaster Risks Management Committee, own Member, SHG Member,</p> <p><b>Political Party:</b> Political Party Member</p> <p><b>Government:</b> Council of Minister, Member of Parliament, Ministries of Social Welfare, Relief and Resettlement</p>
Women and the Economy	<p><b>General Community:</b> Men and Women, Farmer Group, Poor People,Factory Worker,Migrant people,Chin from Rakhine and Kama, Youth, Migrant People, Small Business Men</p> <p><b>Women:</b> Women, Women headed household, Grassroots Women, Small Business Women</p> <p><b>Children:</b> Street Children, Student, Children Under 18, Children Under 5</p> <p><b>High Risk &amp; Vulnerable:</b> PLHIV, Old People, Orphan, Vulnerable people</p> <p><b>Leaders:</b> Religious Leader, Student Leader, Women Org Leader, Women Leader</p> <p><b>CBO/NGO:</b> Own Member, CBO, Partner Staff, SHG Member</p> <p><b>Government:</b> Ministry of Education, Ministry of Finance, Ministry of National Planning</p>
Women and Decision-Making	<p><b>General Community:</b> Community, Men And Women, Student, University Student, Youth</p> <p><b>Women:</b> Women, Women age between 18-38,Grassroot Women,</p> <p><b>Children:</b> Drop Out Student, Children Under 18,</p> <p><b>High Risk &amp; Vulnerable:</b> Orphan, Old People, PLHIV, MSM, Poor People, Sex Worker, vulnerable People,</p> <p><b>Leaders:</b> Women Leader, Student Leader,</p> <p><b>CBO/NGO:</b> CBO &amp; LNGO, CBO Staff, Partner Member, Partner Staff, SHG Member, Own Member,</p> <p><b>Political Party:</b> Political Party Member,</p> <p><b>Government:</b> Council of Minister,Member of Parliament</p>

WON-GEN Member Mapping Report (September 2014-March 2015)

Institutional Mechanisms for the Advancement of Women	<p><b>General Women:</b> DSW Staff, GAD, Parliamentarian, State Government</p> <p><b>Community:</b> Community, Women, Own</p> <p><b>Grassroots:</b> CSO, Youth Women, Member,</p>
Women and Human Rights	<p><b>General Community:</b> Community, Drop Out Student, Factory Worker, Farmer Group, Camp, Men And Women, Mid Level Manager, Student, Monastic School Student, University Student, Youth</p> <p><b>Women:</b> Grassroots Women, Women, Women in Political Party, Youth Women</p> <p><b>Children:</b> Children, Street Children, Children under 18</p> <p><b>High Risk &amp; Vulnerable:</b> LGBT, Disable, MSM, Migrant People, Old People, Orphan, PLHIV, Poor People, Sex Worker</p> <p><b>Leaders:</b> Leader, Women Leader, Women Org Leader, Religious Leader, Ethnic Leader, Student Leader</p> <p><b>CBO/NGO:</b> CBO &amp; LNGO, CBO Staff, CSO, Partner Staff, Own Member, NGO Staff, Partner Member, SHG Member</p> <p><b>Political Party:</b> Political Party Member</p> <p><b>Government:</b> Council of Minister, Government Staff, Member of Parliament, Teacher</p>
Women and the Media	<p><b>General Community:</b> Community, Men And Women, Youth</p> <p><b>Women:</b> Grassroots Women</p>
Women and the Environment	<p><b>General Community:</b> Community, Drop Out Student, Farmer Group, Men And Women, Small Business Men, Student, Youth</p> <p><b>Women:</b> Grassroots Women,</p> <p><b>Children :</b> Children Under 18,</p> <p><b>High Risk &amp; Vulnerable:</b> Old People, Orphan, Poor People,</p> <p><b>Leaders:</b> Religious Leader,</p> <p><b>CBO/NGO :</b> CBO Staff, Own Member, Partner Member, SHG Member,</p>
The Girl Child	<p><b>General Community:</b> Community, Girls, Men And Women, Student,</p> <p><b>Women:</b> Grassroots Women</p> <p><b>Children :</b> Children, Street Children, Young Girls (12-17), Children Under 18,</p> <p><b>High Risk &amp; Vulnerable:</b> Old People, Orphan</p> <p><b>CBO/NGO :</b> CBO Staff, SHG Member</p>

**Annex 7: Key Stakeholders list per NSPAW area.**

**(7.1) Key Stakeholder list of Women and Livelihood**

1	Community	CBO, VDC, Community, Religious Group
2	Government	Department of Social Welfare, Ministry of Health, Agriculture, Hospital, Department of Rural Development, Ministry of Agriculture and Irrigation, Ministry of Fishery, Ministry of Forestry, GAD, Department of Livestock & Veterinary
3	Local Authority	Village authority, Local Authority, Word Administrator, Township Administrator
4	NGO/CBO	MMCWA

**(7.2) Key Stakeholder list of Women, Education and Training**

1	Community	Community, CBO, CSO, VDC, VER, SHG, Youth Group, Women Group, Women, Leader, Myanmar Muslim Youth Group
2	Government	Department of Social Welfare, Police Department, Ministry of Education,
3	Local Authority	Village Authority, Village Head, Word Administrator, Township Administrator
4	NGO/CBO	Asia Justice And Rights, Smile Education, Muslim Council,
5	Political Party	Political Parties
6	Resource Person	Religious Leader
7	Private Sector	Factory Owner

**(7.3) Key Stakeholder list of Women and Health**

1	Community	Women Group, Religious Group, Village Development Committee
2	Government	Department of Social Welfare, Ministry of Health, National Aids Program, Department of Healthiest, Midwives,
3	Local Authority	Village Authority
4	NGO/CBO	MMCWA, YWCA, Save the Children, Red Cross, MHAA,
5	Political Party	Political Parties
6	Resource Person	Religious Leader
7	Private Sector	Factory Owner
8	Media	Sky Net, MRTV, DVB, Myitzima, Irrawaddy
9	UN	UNOPS, UNHCR, UNFPA

**(7.4) Key Stakeholder list of Violence Against Women**

1	Community	Women Group, Men Group, VDC, CSO, CBO, SHG, Religious Leader, University Student, IDP, IDP camp manager
2	Government	Department of Social Welfare, Ministry of Health, Ministry of Home Affair,
3	Local Authority	Ward Administrator
4	NGO/CBO	GEN, WON
5	Political Party	Political Parties

## WON-GEN Member Mapping Report (September 2014-March 2015)

6	Resource Person	Resource Person
7	UN	UNICEF

### (7.5) Key Stakeholder list of Women and Emergency

1	Community	Community, CBO, Leader, Women Group, Religious Group
2	Government	Department of Fishery, Ministry of Finance, President's Office,
3	Local Authority	Local Authority,

### (7.6) Key Stakeholder list of Women and the Economy

1	Community	Community, CBO, Women Group, Religious Group
2	Government	Ministry of Finance, President's Office,
3	Local Authority	Local Authority,
4	Political Party	Political Party
5	NGO/CBO	MWAF, MMCWA, MWEA,
6	Resource Person	Women leader, Religious leader
7	Media	Sky Net, MRTV, DVB, Myitzima, Irrawaddy

### (7.7) Key Stakeholder list of Women and Decision Making

1	Community	Community, CBO, CSO, VDC, Women
2	Government	Ministry of Finance, President's Office,
3	Local Authority	Local Authority,
4	Political Party	Political Party, Ethnic Party
5	NGO/CBO	MWAF, MMCWA
6	Resource Person	Women leader, Religious leader, Resource Person
7	Media	Sky Net, MRTV, DVB, Myitzima, Irrawaddy

### (7.8) Key Stakeholder list of Institutional Mechanism for the Advancement of Women

1	Political Party	Ethnic Party
---	-----------------	--------------

### (7.9) Key Stakeholder list of Women and Human Right

1	Community	Community, CBO
2	Government	Ministry of Immigration & Population
3	Local Authority	Local Authority,
4	Political Party	Political Party
5	Resource Person	Resource Person

### (7.10) Key Stakeholder list of Women and The Media

1	Media	Sky Net, MRTV, DVB, Myitzima, Irrawaddy
---	-------	---

**(7.11) Key Stakeholder list of Women and the Environment**

1	NGO	Gender Equality Network (GEN)
---	-----	-------------------------------

**(7.12) Key Stakeholder list of the Girl Child**

1	Local Authority	Local Authority
---	-----------------	-----------------

**Annex 8: Members' Partner list per NSPAW area**

NSPAW Area	WON/GEN member working with partner	WON & GEN member's Partner who are working at NSPAW area
<b>Women and Livelihoods</b>	Ar Yone Oo, Better Life Organization, Christian Aid, DanChurchAid, Deaf Resource Centre, Diakonia, Gaia Sustainable Management Institute, HELVETAS Swiss Interco operation, Imagine Myanmar, Karuna Myanmar Social Services - Myitkyina Diocese, Norwegian Church Aid Myanmar, Norwegian People's Aid, SWISSAID, TROCAIRE, Rakhine Thahaya Association.	AAR Japan, Aung Set Kyar, Gaia Sustainable Management Institute, International Medical Corps (IMC), Kachin Baptist Conversion, Kachin Urban Rural Mission, Kachin Women's Association Thailand (KWAT), Karen Baptist Church, Karen Baptist Convention (KBC), Karen Development Network (KDN), Karenni National Women's Organization (KNOW), Kaw Dai, KBC Lashio, Knowledge and Dedication for Nation Building/Karen Development Network (KDN), Legal Clinic Myanmar, Loiyang Bum Development Organization, LWF, Maw Kon LDO, Mercy Corps, Metta Development Foundation, Myanmar Baptist Convention, Myanmar Concil of Churches, Myanmar Garment Human Resource Development Centre (MGHRDC), Myanmar Idependent Living Initiative, Myitkyina Lisu Bpatist Association, National Young Men Christian Association (YMCA), Network Activities Group (NAG), Nhlin Banmaw LDO, NPA, Oxfam, Pyoe Pin, Shanzu Development Group, Shwe Danu, Shwe Inn Thu, Shwe Kan Baw Za, Shwe Nyar Myay, Sindun Network Group, Southern Shan LDO, St. Joseph Vocational Training School, Tang Hpre Development Group, Thingaha, Triangle GH, Waimaw Baptist Association, World Food Program (WFP), World Vision, Yangon Bakery House.
<b>Women, Education and Training</b>	Ar Yone Oo, Better Life Organization, Deaf Resource Centre, Diakonia, Gaia Sustainable Management Institute, Karuna Myanmar Social Services - Myitkyina Diocese, National Young Women Christian Association, Ninu (Women in Action Group), Norwegian Church Aid Myanmar, Norwegian People's Aid, Promotion of Indigenous and Nature Together, Rakhine Thahaya Association, Ratna Mahal Education Care Group, Relief International, SWISSAID, TROCAIRE, Women Can Do It,	AAR Japan, AD2030 Vision, Akhaya Women, Danmark YWCA, Early Child Care Development (ECCD) (Nyaungshwe), Early Child Care Development (ECCD) (Theinny), Exodus, Friendly Child, Gaia Sustainable Management Institute, International Medical Corps (IMC), Kachin Baptist Conversion, Kalayarna Matta Foundation, Karenni National Women's Organization (KNOW), Metta Development Foundation, Monastic Education Centre (MEC), Myanmar Baptist Convention, Myanmar Enhancement and Empowerment to Travel (MEET), Myanmar Garment Human Resource Development Centre (MGHRDC), Myanmar Idependent Living Initiative, Myanmar Indigenous People Ethnic Nationality (MIPEN), Myanmar Institute of Theology (MIT), Myittar, National Brotherhood Federation Party, National Endowment for Democracy, Nippon Foundation, NPA, NPSWA, Paungku, Pyoe Pin, RIT NTID (USA), SACC (Chin), Save The Children, Shan Women's Action Network, Thingaha, Thirimay

WON-GEN Member Mapping Report (September 2014-March 2015)

		Women Department Committee, Women Can Do It (WCDI), Myanmar, World Concern Myanmar, Yankin Youth Group.
<b>Women and Health</b>	Ar Yone Oo, CARE International in Myanmar, Christian Aid, Diakonia, Malteser International, National Young Women Christian Association, Norwegian Church Aid Myanmar, Norwegian People's Aid, Pyoe Pin, Rakhine Thahaya Association, Relief International, Win Win	ADRA Myanmar, Burnet Institute, Help Age International (HAI), Kachin Women's Association Thailand (KWAT), Karen Baptist Convention (KBC), Karen Development Network (KDN), Karenni National Women's Organization (KNOW), Legal Clinic Myanmar, Marie Stopes International, MATA, Oxfam, People Health Foundation, Population Services International, Sex workers in Myanmar, Shan Women's Action Network, Township Health Departments, Women Organization Network, World Concern Myanmar
<b>Violence Against Women</b>	Actionaid Myanmar (Women Right), CARE, Christian Aid, Gaia Sustainable Management Institute, International Medical Corps, Norwegian Church Aid Myanmar, Norwegian People's Aid, Pyoe Pin	Action for Social Aids, Akhaya Women, Gaia Sustainable Management Institute, Gender and Development Initiative (GDI), Gender Equality Network, Kachin Women's Association Thailand (KWAT), Karenni National Women's Organization (KNOW), KMSS, Legal Clinic Myanmar, Local Development Network (LDN), Monastic Education Centre (MEC), Myanmar Institute of Theology (MIT), National Young Men Christian Association (YMCA), RTDO, Shan Women's Action Network, Thingaha Gender Organization, Women Can Do It (WCDI), Myanmar, Women Organization Network
<b>Women and Emergencies</b>	Christian Aid, Diakonia, Imagine Myanmar, Karen Women Empowerment Group, Malteser International, Norwegian Church Aid Myanmar, Norwegian People's Aid, Oxfam in Myanmar, Relief International, Scholar	Action aid Myanmar, CERA, Gender and Development Initiative (GDI), Human for Peace, Kachin Baptist Convention, Kachin Women's Association Thailand (KWAT), Karenni National Women's Organization (KNOW), MERN (Myanmar Environment Reservation Network), People in Need, Shalom, Shan Women's Action Network, Thai-Myanmar Border Mesouk, Township Health Departments, World Concern Myanmar, Yadanar



WON-GEN Member Mapping Report (September 2014-March 2015)

	Institute	Myay
<b>Women and the Economy</b>	Ar Yone Oo, Diakonia, Gaia Sustainable Management Institute, National Young Women Christian Association, Norwegian Church Aid Myanmar, Oxfam in Myanmar, SWISSAID	Finland YWCA, Gaia Sustainable Management Institute, IIED, Kayin Baptist Convention, Mercy Corps, Metta Development Foundation, Myanmar Baptist Convention, Myanmar Christian Council, National Young Men Christian Association (YMCA), Pyoe Pin, Sutzup Gindai Community Saving Group, Triangle GH, World Concern Myanmar,
<b>Women and Decision-Making</b>	Better Life Organization, CARE International in Myanmar, Christian Aid, Diakonia, Gaia Sustainable Management Institute, Myanmar Women Entrepreneurs' Association, Norwegian Church Aid Myanmar, Norwegian People's Aid, Oxfam in Myanmar, Pyoe Pin, TROCAIRE,	ACTED, Akhaya Women, Charity-Oriented Myanmar (COM), Gaia Sustainable Management Institute, Gender and Development Initiative (GDI), Gender Equality Network, Jeephya Education Services (JES), Karen Baptist Convention (KBC), Karen Development Network (KDN), Karenni National Women's Organization (KNOW), Kayin Baptist Convention, Knowledge and Dedication for Nation Building/Karen Development Network (KDN), Mon Women Organization, Myanmar Baptist Convention, Network Activities Group (NAG), Oxfam, Phan Tee Eain, Sex workers in Myanmar, Shan Women's Action Network, Women Can Do It (WCDI), Myanmar, Women Organization Network, World Concern Myanmar,
<b>Institutional Mechanisms for the Advancement of Women</b>	CARE International in Myanmar, Norwegian People's Aid, Norwegian Church Aid Myanmar, Christian Aid	Gender and Development Initiative (GDI), Gender Equality Network, Karenni National Women's Organization (KNOW), Legal Clinic Myanmar
<b>Women and Human Rights</b>	Actionaid Myanmar (Women Right), Ar Yone Oo, CARE International in Myanmar, DanChurchAid, Diakonia, Gaia Sustainable Management Institute, Imagine Myanmar, Karen Women Empowerment Group, Norwegian Church Aid Myanmar, Norwegian People's Aid, Oxfam in Myanmar, Promotion of Indigenous and Nature Together, Pyoe Pin, Scholar Institute, TROCAIRE,	Bago Yoma Care Development Group, Charity-Oriented Myanmar (COM), Colour Rainbow, Deborer, DHF (Peace), Diakonia, Equality Myanmar, Gaia Sustainable Management Institute, Gender Equality Network, HMA, Human for Peace, Jeephya Education Services (JES), Karen Baptist Convention (KBC), Karenni National Women's Organization (KNOW), Kayin Baptist Convention, KMSS, KWEG, Labour Right Defender Promoter (LRDP), Land Core Group, Legal Clinic Myanmar, Local Resource Centre, Metta Development Foundation, Monastic Education Centre (MEC), Myanmar Baptist Convention, Myanmar Council of Churches, Myanmar Ecclesia of Women in Asia (MEWA), Myanmar Institute of Theology (MIT), Myaylat Community Forest, NGOGG, Oxfam, Paung Ku, People in Need, Phan Tee Eain,

WON-GEN Member Mapping Report (September 2014-March 2015)

		Save the Children, Sex workers in Myanmar, Shan Women's Action Network, Swedish Peace And Arbitration (SPAS), Thingaha, TLMI, University of Comlumbia New York, Women Organization Network, World Concern Myanmar, Wunlat Foundation, Yadanar Myay, Yoma Lu Nge Alin Tan,
<b>Women and the Media</b>	Norwegian People's Aid	Women Can Do It (WCDI), Myanmar
<b>Women and the Environment</b>	Ar Yone Oo, Promotion of Indigenous and Nature Together, Gaia Sustainable Management Institute, EcoDev	Burnet Institute, Diakonia, Gaia Sustainable Management Institute, IIED, Mercy Corps, Myanmar Green Network, Myaylat Community Forest, Save The Children, Triangle GH, UN (UNDP, UNOPS, WFP, INGO), Wunlat Foundation, Yoma Lu Nge Alin Tan
<b>The Girl Child</b>	Karen Women Empowerment Group, Norwegian Church Aid Myanmar, Norwegian People's Aid, Pyoe Pin, Religions for Peace Myanmar,	Kachin Women's Association Thailand (KWAT), Karenni National Women's Organization (KNOW), Karuna Myanmar Social Services, Legal Clinic Myanmar, Marie Stops International (MSI), Positive Muslim Group, Ratana Metta Organization, Save the Children, Shan Women's Action Network, Urban Rural Mission (MCC), Yangon Kayin Baptist Women Association

**Annex 9: Members' Consortium Information**

#	Name of Consortium	WON/GEN member	Consortium member	Activity	Working area
1	Disaster Preparedness	Agency for Technical Cooperation and Development	IOM, Asian Disaster Preparedness Centre, Swan Yee	DRR Program	
2	Emergency Response	Agency for Technical Cooperation and Development	MCC, DDM, MRCS, Asian Disaster Preparedness Centre, UNDP, Help Age International, UN-Habitat, UNICEF, Help Age International	Emergency Response	
3	Yarza Thitsar	Better Life Organization	NGOGG, Myittar Development, Southern Shan Local Development Organization, LEAD Emergency Development	Organization Development	Kyaukpyu & Yangon
4	Tat Lan	Better Life Organization	Save the Children International, Oxfam in Myanmar, CARE International in Myanmar, International Rescue Committee	Livelihood & Food Security	Kyaukpyu
5	Pyit Taing Htaung	Better Life Organization	Oxfam in Myanmar, EcoDev, SPECTRUM - Sustainable Development Knowledge Network	Environment	Kyaukpyu & Dry Zone
6	Myanmar Education Consortium (MEC)	Burnet Institute (Myanmar)	Save the Children International, World Vision Myanmar, MEDG	ECCD & Monistic School	

WON-GEN Member Mapping Report (September 2014-March 2015)

7	Tet Lan	CARE International in Myanmar	International Rescue Committee, Better Life Organization, Oxfam in Myanmar, Save the Children International	Agriculture, Capacity Building, Gender, Women Empowerment Training, Governance, Saving and Loan, Infrastructure, Market Development, Nutrition	Pauktaw, Myebon, Minbya, Kyauk pyu
8	Phase In	CARE International in Myanmar	ACF, GRET,	Community Forestry, DRR Program, Food Security, Health, Livelihood, WA SH, Farmer Field School, VSLA,	Buthidaung, Maungdaw
9	NGO Consortium on HIV and ADIS in Myanmar	CARE International in Myanmar	Marie Stopes International, Save the Children International, MNMA,	BCC, Communication, Community Home Based Care, HIV testing and counseling, STI treatment,	Bago, Aungmyaythazan, Chanayethazan, Chanmyathazi, Mahaaungmyay, Pyigyitagon, Mawlamyine, Pyay, Magway, Pakokku, Mudon, Ye, Kale, Monywa, Tamu, Patheingyi, Lashio, Muse, Namhkan, Thaketa
10	Consortium	Cord	Gender and Development Initiative- Myanmar, Gaia Sustainable Management Institute	Gender, Capacity Building, Leadership	Across Myanmar
11	Environment	HELVETAS Swiss Intercooperation	IUCN, Network Activities Group,	Fishery, Environment, Livelihood	Bago, Yangon, Mon

WON-GEN Member Mapping Report (September 2014-March 2015)

1 2	Global Fund (NGO Consortium on HIV and ADIS in Mynamar)	Marie Stopes International	Marie Stopes International, Save the Children International, MNMA	ART Provision, BCC, CHBC	Mawlamyine, Bago, Monywa, Magway, Pakokku
1 3	UN Women Project	Mon Women's Organization	Mon Women Gorup, Mon Cetana Development Foundation, Mon National Education Department, Women Empowerment Program, Mon Youth Progress Organization, Metta	Women, Peace & Security, Research, Media	Mawlamyine, Tanintharyi, Kayin
1 4	Baptist Federation	Myanmar Baptist Convention, Women's Dept	Southern Shan Baptist Association, Myitkyina Baptist Association, Kanti Baptist Association, East Shan/ Larhu Baptist Association, Shwe Li Shan Group, Southern Shan Baptist Association, Chin Baptist Association, Tedim Association, Rakhine Association, Mon Association, Lisu Association	Microfinance, Gender, Human Right, Capacity Building, Education, Health	Lashio, Myitkyina, Kanti, Kengtung, Muse, Taunggyi, Falam, Tedim, Sittwe, Mawlamyine, Pyinoolwin
1 5	Tat Lan Sustainable Food Security and Livelihood Programme	Oxfam in Myanmar	International Rescue Committee, Better Life Organization, Oxfam in Myanmar, Save the Children International		

WON-GEN Member Mapping Report (September 2014-March 2015)

1 6	DIPECHO Consortium	Oxfam in Myanmar	Actionaid Myanmar (Women Right), ACF, Plan International, Help Age International, UN HABITAT, Action For Social Aid, Yangon Young Women Christian Association, Social Policy & Poverty Research Group	DRR Program, Gender, Women Leadership, Disability, CBDRR	Pyapon, Sittwe, Nga Yoke Kaung, Labutta, Bago, Taungoo, Sagaing
1 7	Promoting Political Awareness of Communities, and Civic Education of their Representatives (PACER)	Phan Tee Eain	TROCAIRE, Charity-Oriented Myanmar	Capacity Building, Establishment and Operationalization of Resource Centres, Advocacy and Awareness Raising Tools, Monthly Meeting	Yangon, Mawlamyine, Taunggyi, Dawei
1 8	BRACED (Baydar)	Plan Myanmar	World Vision Myanmar, Actionaid Myanmar (Women Right), Myanmar Environment Institute, UN-Habitat, BBC Media Action	DRR Program	Bogale, Labutta, Pyapon, Kyaukpyu, Minbya, Mrauk-U, Sittwe, Toungup
1 9	Myanmar Consortium Disaster Risk Reduction (MCDR)	Ratna Mahal Education Care Group	MPSWA, Myanmar Enhancement and Empowerment to Travel, SACC, Exodus, Ah Thawka, Taung Zalat Flower Group, Sittew Group, Community Development Assessment, Sopyay Myanmar, Land Thit Foundation, Gold	DRR Research	Yangon

WON-GEN Member Mapping Report (September 2014-March 2015)

			Myanmar, Friendly Child		
20	Myittar Set Wine	Smile Women Empowerment	Interfaith Youth Cooperative Action For Peace, Judson Research Centre, Klyana Metta Foundation, Myittar Resource Foundation, National Catholics' Youth Commission, Swe Thahar Social Service, Student Christian Movement, Smile Women Empowerment , Young Men Christian Association	Interfaith	Across Myanmar
21	Social Policy and Poverty Research Group (SPPRG)	Social Policy & Poverty Research Group	Actionaid Myanmar (Women Right), Department of Social Welfare, The Leprosy Mission International, Help Age International	Social Protection	Sagaing
22	Thadar Consortium	Thadar Consortium	Ratana Metta Organization, Thingaha Gender Organization, Asho Women, Swan Yee, ECLOF, MCC, YKBWA, MBCU, MCS, Nan Oo, Social Vision Service	Advocacy and Research, Social Protection, Capacity Building, Livelihood	Dry Zone, Delta

WON-GEN Member Mapping Report (September 2014-March 2015)

2 3	Thadar Consortium	Thingaha Gender Organization	Myanmar Baptist Churches Union, Ratana Metta Organization, Swan Yee, Social Vision Service, Nan Oo, Myanmar Ceramics Society	Advocacy and Research, Social Protection, Capacity Building, Livelihood	Mawlamyineg yun, Bogale
2 4	Meikhtilar People Honorary Network	Wimutti Volunteer Group	Meikhtilar People Honorary Network	Land Rights	Meikhtilar
2 5	Myanmar Education Consortium	World Vision	Save the Children International, Burnet Institute (Myanmar)	ECCD, NFE	
2 6	Thadar Consortium	Yangon Kayin Baptist Women Association	Thadar Consortium member	Agriculture	Taungoo
2 7	Myittar Set Wine	YMCA	Myittar Set Wine member	Interfaith	Yangon



**Annex 10: Members' Donor Information**

**(10.1) Donor Name: Women and Livelihood**

3DRIII, 3MDG, Abillis Foundation, ADXB, AUSAID, Bread for the World, British Embassy, BusinessKind- Myanmar, Childfund Myanmar, Church of Sweden, Cooperazione Italian, Dan Church Aid, Danish Embassy, Danish Women Association, Department for International Development (DFID), Diakonia, EIG(FLEG), Europe Commission, European Union (EU), WEC(KCCF), FE (Eco-Lab), Fertile Planet, Finn Church Aid, French Embassy, Global Fund, Government of Netherland, Happel Foundation, ICCO&KERK in ACTIE, International Medical Crops (IMC), Irish Aids, KAS, Livelihood and Food Security Trust Fund (LIFT), Lutheran Church in America, LWF German National Committee, MEC, Mercy Crops, MMN(Climate Change), MPSI, Norwegian Church AIDs(NCA), NCEA/GOM(ETPACC) New Zealand Embassy, NHMRC, Ni Chi Bi Hel Academy School, NIH, Norwegian People AID (NPA), Own Funding, Oxfam, PFHEB, Pop Council, Pyoe Pin, Religion for Peace, Save the Children, SDC, Shwe Taung Company, SIDA( SPICES), SwissAid, Tear Australia, Trocaire, UNAIDS, UNDP, UNFPA, UNICEF, UNOPS US Embassy, USAID, Wetland Alliance/ NAG(Wetland), World Food Program (WFP), World Bank, Youth Care International

**(10.2) Donor Name : Women, Education and Training**

3DRIII, 3MDG, Abillis Foundation, Action Aid Myanmar, ACWC, AFXB, Alliance in Myanmar, Amatae, American Jewish World Service, ANCP (Australian AID and CARE Australia), Asia Justice and Rights, AUSAID, Australia Worker Federation, AZG Holland, Bostiber Foundation, Bread for the World, British Embassy, Board for the World (Germany), Burnet Institute, BusinessKind-Myanmar, Care Myanmar, Church of Sweden, Cord Myanmar, Czech Republic, DAI, Dan Church Aid, Danish Embassy, Danish Women Association, Department for international Development (DFID), Diakonia, EIA(FLEGT), Europe Commission, European Union (EU),EWC(KCCF), FCO, FE(ECO-Lab), Fertile Planet, Finn Church Aid, Freedom House, French (CIAA), French Embassy, Friedrich Naumann Foundation, George Lewin Foundation, Global Fund, GHR Foundation, Global Women, Imagine World Wide, International Medical Corps( IMC), International Republic Institution (IRI), KAS, KWEG, LIFT, Lutheran Church in America, LWF Germany National Committee, MCC, MEC, Mercy Corps, MMN(Climate Change), MPSI, National Endowment for Democracy, NCA( Norwegian Church Aid), NCEA/GOM(ETPACC), New Zealand Worker Federation, New Zealand Embassy, NHMRC, Ni Chi Bi Hel Academy School, NIH, Norad, Norwegian Ministry of Foreign Affairs, NPA, Open Donor, Oxfam, Paung Ku, People In Need, PFHEB, Pop Council, Private Donor, Pyoe Pin, Religion for Peace, Sandhi Government Institute, Save the Children, SDC, Shalom Foundation, Shwe Taung Company, SIDA(SPICES), SWIBER, SwissAid, The Asia Foundation, Trocaire, UK Embassy, UN Women, UNAIDS, UNDP, UNFPA, UNICEF, UNOPS, US Donor (OFDA, OTI), US Embassy, USAID, Wetland Alliance/NAG (Wetland), WFP, Women Organization Network (WON), World Bank, Youth Care International

**(10.3) Donor Name: Women and Health**

3DRIII, 3MDG, Abillis Foundation, ACWC, ADP, AFXB, Alliance in Myanmar, American Jewish World Service, ANCP (Australian AID and CARE Australia), AUSAID, AZG Holland, Bill & Melinda Gates Foundation, BMZ (Germany), Bostiber Foundation, Bread of the World, British Embassy, Board for the World (Germany), Burnet Institute, Childfund Myanmar, Church of Sweden, CIDA, Cord Myanmar, Czech Republic, DIA, Dan Church Aid, Danish Women Association, Department for international Development (DFID), Denmark (DMCDD), EIA(FLEGT), Europe Commission, European Union (EU), WEC (KCCF), FE(Eco-Lab), Fertile Planet, Finn Church Aid, French Embassy, George Lewin Foundation, German Government, Global Fund, Global Women, Hyundai Company, ICCO& KERK in ACTIE, Johns Hopkins Bloomberg School of Public Health, KAS, KWEG, LIFT, Lutheran Church in America, LWF German National Committee, MCC, MEC, Mercy Corps, MMN(Climate Change), MPSI, NCA, NCEA/GOM (ETPACC), New Zealand Embassy, NHMRC, Ni Chi Bi Hel Academy School, NIH, Norad, SwissAid, The Asia Foundation, Trocaire, UK Embassy, UN Women, UNAIDS, UNDP, UNFPA, UNICEF, UNOPS, US Donor (OFDA, OTI), US Embassy, USAID, Wetland Alliance/NAG (Wetland), WFP, WON, World Bank, Youth Care International

**(10.4) Donor Name: Violence Against Women**

3MDG, Action Aid Myanmar, Amatae, American Jewish World Service, ANCP (Australian AID and CARE Australia), Asia Justice and Rights, AUSAID, Bostiber Foundation, Bread for the World, BusinessKind-Myanmar, Care Myanmar, Childfund Myanmar, Church of Sweden, CIDA, Czech Republic, DIA, Dan Church Aid, Danish Embassy, Denmark (DMCDD), Diakonia, Europe Commission, European Union (EU), FCO, Finn Church Aid, Freedom House, George Lewin Foundation, Global Fund, Global Women, ICCO& KERK in ACTIE, KWEG, LIFT, Lutheran Church in America, LWF German National Committee, National Endowment for Democracy, NCA, Norad, Norwegian Ministry of Foreign Affairs, NPA, Open Society Institute (OSI), Oxfam, Paung Ku, Pyoe Pin, Religion for Peace, Save the Children, SDC, SwissAid, TEAR AUSTRALIA, The Asia Foundation, Trocarie, UK AIDS, UK Embassy, UN Trust Fund, UN Women, UNICEF, US Embassy, Women Organization Network (WON), Youth Care International

**(10.5) Donor Name: Women and Emergency**

3MDG, Action Aid Myanmar, ActionAid Myanmar, ADP, Amatae, American Jewish World Service, AUSAID, BMZ(Germany), Bread for the World, , British Embassy, Bread of the World (Germany), CARE Myanmar, Church of Sweden, CIDA, Czech Republic, DIA, Dan Church Aid, DIFID, Denmark (DMCDD), Europe Commission, European Union (EU), Finn Church Aid, Freedom House, French (CIAA), Fredrich Naumann Foundation, German Government, Global Fund, Hyundai Company, LIFT, Lutheran Church in America, LWF German National Committee, Mercy Corps, MPSI, National Endowment for Democracy, NCA, NPA, Oxfam, Paung Ku, People In Need, Plan (Australia), Plan ( Japan), Save the Children, SDC, Shalom Foundation, SwissAid, The Asia Foundation, Trocarie, UK Embassy, UN Trust Fund, UNDP, UNICEF, US Donor (OFDA, OTI), US Embassy, USAID, WFP, World Bank, Youth Care International

**(10.6) Donor Name: Women and the Economy**

3 MDG, ACWC, Alliance in Myanmar, Amatae, American Jewish World Service, ANCP (Australian AID and CARE Australia), AISAID, AZD Holland, Bostiber Foundation, British Embassy, Broad of the World (Germany), Burnet Institute, Childfund Myanmar, Church of Sweden, CIDA, Cord Myanmar, Czech Republic, DAI, Dan Church Aid, Danish Embassy, DFID, Denmark (DMCDD), EIA (FLEGT), Europe Commission, European Union (EU), EWC (KCFE), FE (Eco-Lab), Finn Church Aid, Freedom House, French (CIAA), George Lewin Foundation, Global Fund, Global Women, Global Women Initiative, ICCO&KERK In ACTIE, International Republic Institution (IRI), KAS, KWEG, LIFT, Lutheran Church in America, LWF German National Committee, Myanmar Council of Churches (MCC), MMN (Climate Change), MPSI, NCEA/GOM (ETPACC), Norad, Norwegian Ministry of Foreign Affairs, NPA, Open Donor, Open Society Institute (OSI), Oxfam, People In Need (PIN), Pyoe Pin, Religion for Peace, Sandhi Government Institute, Save the Children, SDC, SIDA (SPICES), SWIBER, TERA AUSTRALIA, The Asia Foundation, Trocaire, UK Embassy, UNAIDs, UNDP, UNICEF, US Donor (OFDA, OTI), US Embassy, USAID, Wetland Alliance/NAG (Wetland), WFP, Women Organization Network (WON)

**(10.7) Donor Name: Women and Decision Making**

3 MDG, Amatae, American Jewish World Service, ANCP (Australian AID and CARE Australia), AISAID, Bostiber Foundation, Broad of the World (Germany), BusinessKind-Myanmar, Childfund Myanmar, Dan Church Aid, Diakonia, Europe Commission, European Union (EU), Finn Church Aid, Freedom House, French (CIAA), George Lewin Foundation, Global Fund, Global Women, Global Women Initiative, Happen Foundation, ICCO& KERK in ACTIE, LIFT, Lutheran Church in America, LWF German National Committee, Netherlands Embassy, Newzeland Embassy, Norad, Norwegian Ministry of Foreign Affairs, NPA, Open Donor, Open Society Institute (OSI), Religion for Peace, Sandhi Government Institute, SDC, Tear Australia, The Asia Foundation, Trocaire, UK Embassy, UNAIDS, UNDP, UNFPA, UNICEF, US Donor (OFDA, OTI), US Embassy, World Bank

**(10.8) Donor Name: Institutional Mechanism for the Advancement of Women**

Diakonia, European Union (EU), NPA, Trocaire, UKAIDS, UN Trust Fund

**(10.9) Donor Name: Women and Human Right**

3 MDG, Action Aid Myanmar, ACWC, AIPP, American Jewish World Service, Asia Justice And Rights, AUSAID, British Embassy, CARE Myanmar Church of Sweden, CIDA, Cord Myanmar, Czech Republic, DAI, Dan Church Aid, DANIDA, Danish Embassy, Department for International Development (DFID), Denmark (DMCDD), Diakonia, EIA (FLEGT), Europe Commission, European Union (EU), EWC (KCFE), FCO, FE (Eco-Lab), Fertile Planet, Finn Church Aid, Friedrich Naumann Foundation, Global Women, Irish Aids, IWGIA, KAS, KWEG, LIFT, Lutheran Church in America, LWF German National Committee, MCC, Mercy Corps, MMN (Climate Change), MPSI, National Endowment for Democracy, NCA (Norwegian Church Aid), NCEA/GOM (ETPACC), Netherlands Embassy, Ni Chi Bi Hel Academy School, Norad, NPA, Oxfam, Paung Ku, People In Need, Pyoe Pin, Rain Forest Foundation, Religion for Peace, Save the Children, Shalom Foundation, Shwe Taung Company, SIDA (SPICES), SwissAid, Trocaire, UK Embassy, UN Women, UNAIDS, UNDP, UNICEF, US (Weapon Reduce & Absent), US Embassy, USAID, Wetland Alliance/ NAG (Wetland), WFP, WON, World Bank

**(10.10) Donor Name: Women and the Media**

Fertile Planet, Global Women, Ni Chi Bi Hel Academy School, NPA, Open Society Institute (OSI), Shwe Taung Company

**(10.11) Donor Name: Women and the Environment**

3 mDG, ACWC, AIPP, AUSAID, Bread for the World, British Embassy, Childfund Myanmar, Dan Church Aid, DANIDA, DIFID, Diakonia, EIA (FLEGT), Europe Commission, European Union (EU), EWC (KCCF), FE (Eco-Lab), IXXO & KERK in ACTIE, IWGIA, KAS, KWEG, LIFT, MCC, MMN (Climate Change), NCA, NCEA/GOM (ETPACC), Norad, NPA, Oxfam, Pyoe Pin, Rain Forest Foundation Religion for Peace, Save the Children, SIDA( SPICES), TEAR Australia, Trocaire, UNAIDS, UNDP, UNICEF, US embassy small grant, Wetland Alliance/NAG (Wetland), WFP, WON, Youth Care International

**(10.12) Donor Name: The Girl Child**

AUSAID, BMZ(Germany), BusinessKind-Myanmar, Broad for the World (Germany), DFID, EU, Hyundai Company, Plan (Australia), Plan (Japan), Religion for Peace, UNICEF, US embassy small grant