

Flood Risk Map Infrastructure Sector

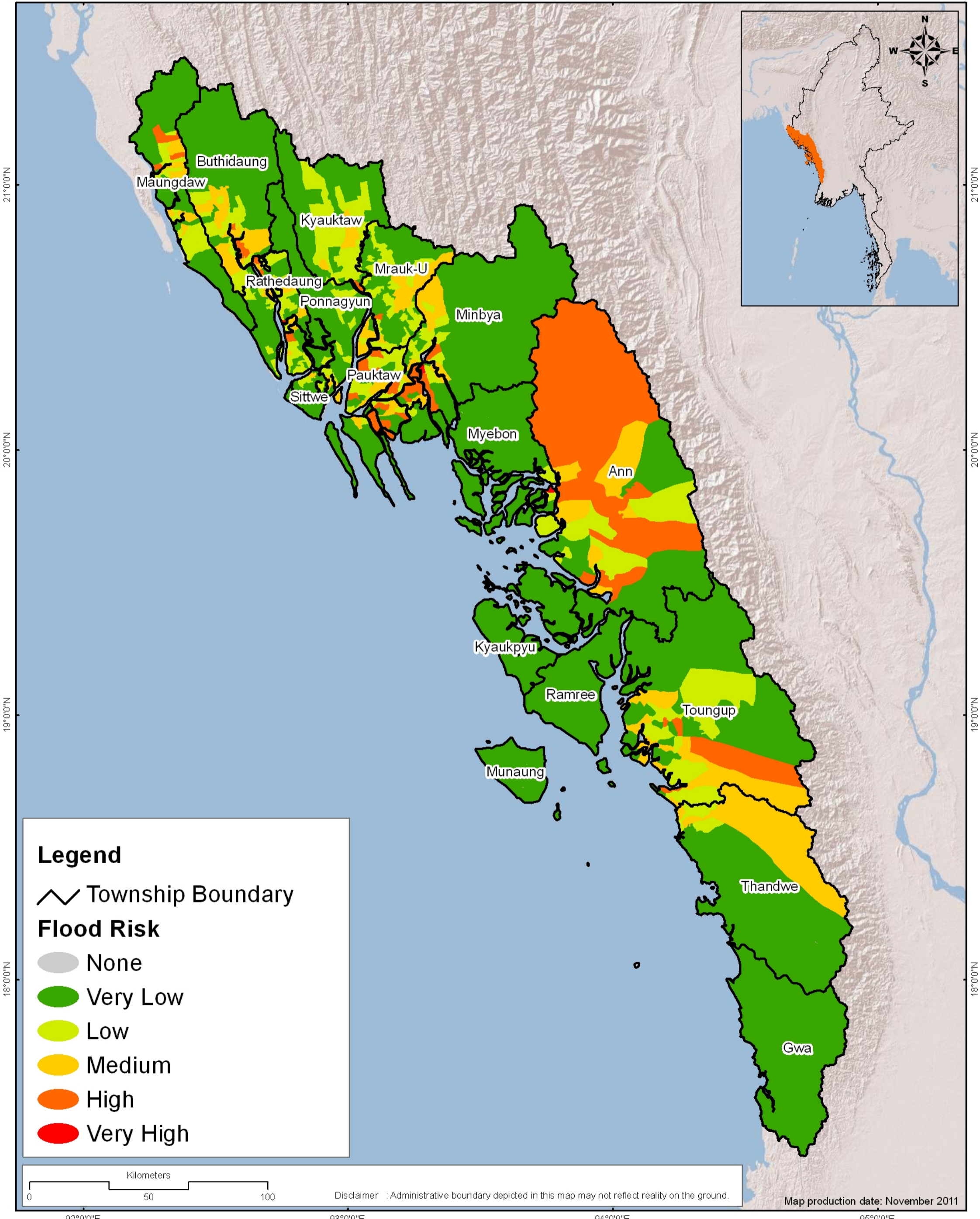
Multi Hazard Risk Assessment in the Rakhine State of Myanmar

92°0'0"E

93°0'0"E

94°0'0"E

95°0'0"E

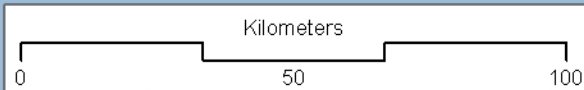


Legend

⚡ Township Boundary

Flood Risk

- None
- Very Low
- Low
- Medium
- High
- Very High



Disclaimer : Administrative boundary depicted in this map may not reflect reality on the ground.

Map production date: November 2011

92°0'0"E

93°0'0"E

94°0'0"E

95°0'0"E