

Coronavirus disease (COVID-19)

Situation Report – 141

Data as received by WHO from national authorities by 10:00 CEST, 09 June 2020

Highlights

More than 7 million cases of COVID-19 and over 400 000 deaths have now been reported to WHO. Although the situation in Europe is improving, globally it is worsening. On Sunday, more than 136 000 cases were reported, the most in a single day so far. In countries seeing positive signs, the WHO Director-General warned in his [media briefing](#) yesterday ‘the biggest threat now is complacency’.

The [WHO Regional Office for the Americas](#) has published a guide with [recommendations on measures to reduce COVID-19 transmission among indigenous populations, Afro-descendants, and other ethnic groups](#). The recommendations focus on promoting hygiene, social distancing, and improving access to basic health services in these communities.

[WHO fully supports equality and the global movement against racism](#). We encourage all those protesting around the world to do so safely: as much as possible, keep at least 1 metre from others, clean your hands, cover your cough and wear a mask if you attend a protest.

WHO has published [14 new community and risk engagement posters on parenting during the pandemic](#). Some of the topics that these posters cover include: [learning through play](#), [keeping calm and managing stress](#), [keeping children safe online](#), [family budgeting in times of financial stress](#), and [talking about COVID-19](#).

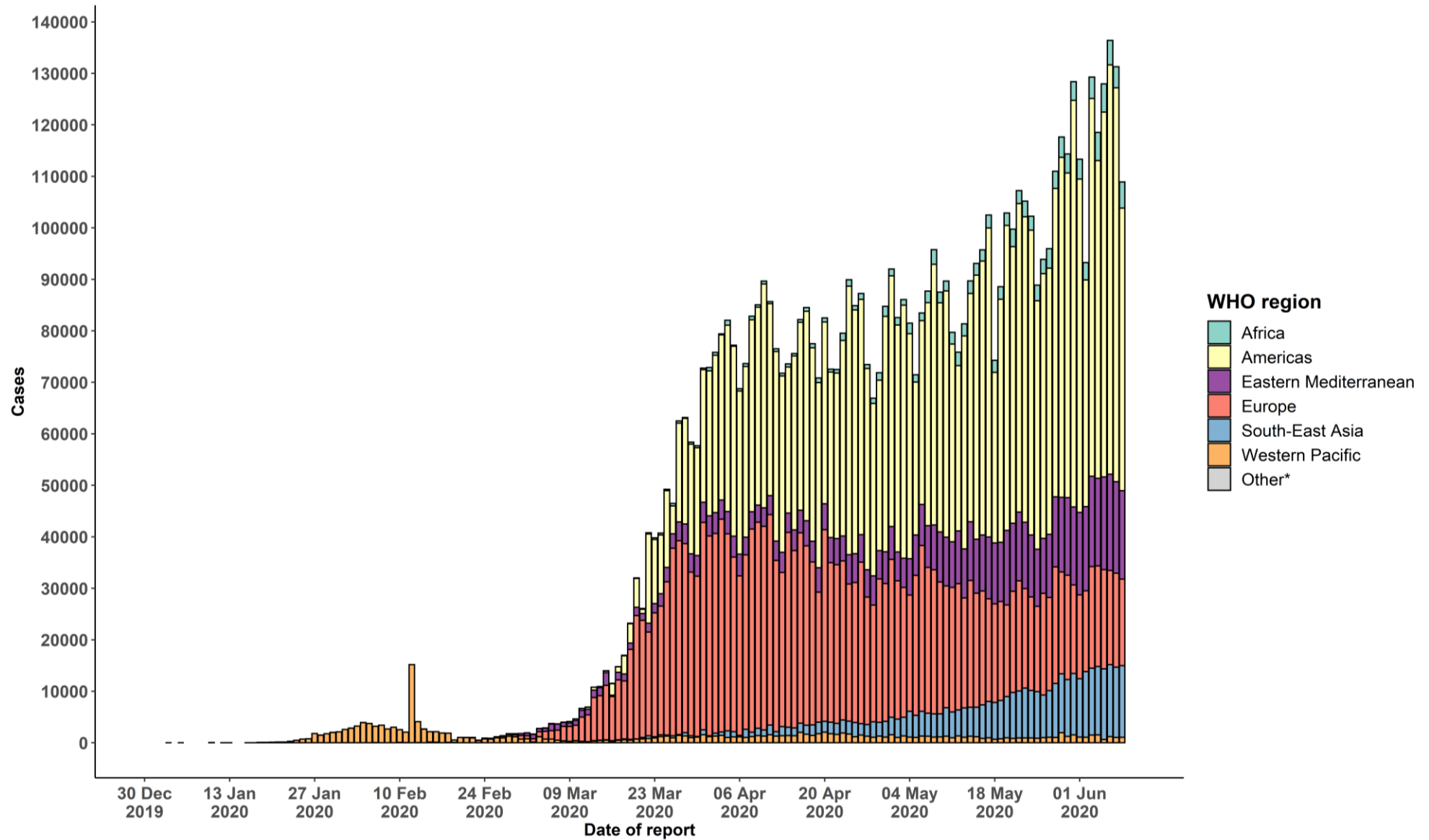
Situation in numbers (by WHO Region)

Total (new cases in last 24 hours)

Globally	7 039 918 cases (108 918)	404 396 deaths (3 539)
Africa	140 498 cases (5 086)	3 352 deaths (116)
Americas	3 366 251 cases (54 864)	183 950 deaths (2 146)
Eastern Mediterranean	658 614 cases (17 185)	14 913 deaths (311)
Europe	2 303 361 cases (16 801)	184 671 deaths (551)
South-East Asia	378 118 cases (13 922)	10 376 deaths (406)
Western Pacific	192 335 cases (1 060)	7 121 deaths (9)

Surveillance

Figure 1. Number of confirmed COVID-19 cases, by date of report and WHO region, 30 December through 09 June**



**See [Annex 1](#) for data, table and figure notes.

Table 1. Countries, territories or areas with reported laboratory-confirmed COVID-19 cases and deaths, by WHO region. Data as of 10 AM CEST, 09 June 2020**

Reporting Country/ Territory/Area	Total confirmed cases	Total confirmed new cases	Total deaths	Total new deaths	Transmission classification ⁱ	Days since last reported case
Africa						
South Africa	50 879	2 594	1 080	82	Community transmission	0
Nigeria	12 801	315	361	7	Community transmission	0
Algeria	10 265	111	715	8	Community transmission	0
Ghana	9 910	272	48	4	Community transmission	0
Cameroon	8 060	200	215	0	Community transmission	0
Senegal	4 430	102	49	0	Community transmission	0
Guinea	4 216	51	23	0	Community transmission	0
Democratic Republic of the Congo	4 105	90	87	3	Community transmission	0
Côte d'Ivoire	3 881	142	38	2	Community transmission	0
Gabon	3 101	0	21	0	Community transmission	3
Kenya	2 862	95	85	1	Community transmission	0
Ethiopia	2 156	136	27	0	Clusters of cases	0
Central African Republic	1 850	216	5	0	Clusters of cases	0
South Sudan	1 604	287	19	5	Clusters of cases	0
Mali	1 547	14	92	0	Community transmission	0
Guinea-Bissau	1 389	21	12	0	Community transmission	0
Zambia	1 200	46	10	3	Community transmission	0
Madagascar	1 094	42	9	0	Clusters of cases	0
Mauritania	1 049	102	43	0	Clusters of cases	0
Equatorial Guinea	1 043	0	12	0	Community transmission	16
Sierra Leone	1 001	32	49	1	Community transmission	0

Reporting Country/ Territory/Area	Total confirmed cases	Total confirmed new cases	Total deaths	Total new deaths	Transmission classification ¹	Days since last reported case
Niger	973	0	65	0	Community transmission	1
Burkina Faso	890	2	53	0	Community transmission	0
Chad	839	2	70	1	Community transmission	0
Uganda	775	30	0	0	Sporadic cases	0
Congo	683	0	20	-2	Community transmission	1
Cabo Verde	567	13	5	0	Clusters of cases	0
United Republic of Tanzania	509	0	21	0	Community transmission	32
Togo	497	2	13	0	Community transmission	0
Rwanda	451	12	2	0	Sporadic cases	0
Malawi	443	5	4	0	Clusters of cases	0
Mozambique	433	9	2	0	Clusters of cases	0
Liberia	370	11	30	0	Community transmission	0
Eswatini	340	7	3	0	Clusters of cases	0
Mauritius	337	0	10	0	Clusters of cases	3
Benin	305	37	4	0	Community transmission	0
São Tomé and Príncipe	295	0	10	0	Clusters of cases	13
Zimbabwe	287	8	4	0	Sporadic cases	0
Comoros	97	0	2	0	Community transmission	2
Angola	92	1	4	0	Clusters of cases	0
Burundi	83	0	1	0	Clusters of cases	2
Botswana	42	2	1	0	Clusters of cases	0
Eritrea	41	0	0	0	Sporadic cases	4
Namibia	31	2	0	0	Sporadic cases	0

Reporting Country/ Territory/Area	Total confirmed cases	Total confirmed new cases	Total deaths	Total new deaths	Transmission classification ⁱ	Days since last reported case
Gambia	28	2	1	0	Sporadic cases	0
Seychelles	11	0	0	0	Clusters of cases	63
Lesotho	4	0	0	0	Sporadic cases	5
Territoriesⁱⁱ						
Mayotte	2 151	72	26	1	Clusters of cases	0
Réunion	481	1	1	0	Clusters of cases	0
Americas						
United States of America	1 933 560	17 848	110 220	474	Community transmission	0
Brazil	691 758	18 912	36 455	525	Community transmission	0
Peru	196 515	4 757	5 465	164	Community transmission	0
Chile	138 846	4 696	2 264	627	Community transmission	0
Mexico	117103	3484	13 699	188	Community transmission	0
Canada	95 699	642	7 800	27	Community transmission	0
Ecuador	43 378	258	3 642	21	Community transmission	0
Colombia	39 236	1 209	1 259	54	Community transmission	0
Argentina	22 794	774	670	14	Community transmission	0
Dominican Republic	20 126	526	539	1	Community transmission	0
Panama	16 425	421	393	7	Community transmission	0
Bolivia (Plurinational State of)	13 643	285	465	11	Community transmission	0
Guatemala	7 055	263	252	22	Community transmission	0
Honduras	6 327	172	258	8	Community transmission	0
Haiti	3 334	262	51	1	Community transmission	0
El Salvador	3 104	89	55	0	Community transmission	0
Venezuela (Bolivarian Republic of)	2 377	61	22	0	Community transmission	0

Reporting Country/ Territory/Area	Total confirmed cases	Total confirmed new cases	Total deaths	Total new deaths	Transmission classification ⁱ	Days since last reported case
Cuba	2 200	9	83	0	Clusters of cases	0
Costa Rica	1 318	55	10	0	Clusters of cases	0
Nicaragua	1 309	0	46	0	Community transmission	5
Paraguay	1 145	10	11	0	Community transmission	0
Uruguay	845	0	23	0	Clusters of cases	1
Jamaica	598	2	10	0	Clusters of cases	0
Guyana	154	0	12	0	Clusters of cases	1
Suriname	128	27	2	1	Sporadic cases	0
Trinidad and Tobago	117	0	8	0	Sporadic cases	8
Bahamas	103	0	11	0	Clusters of cases	2
Barbados	92	0	7	0	Clusters of cases	15
Saint Vincent and the Grenadines	27	1	0	0	Sporadic cases	0
Antigua and Barbuda	25	0	3	0	Clusters of cases	36
Grenada	23	0	0	0	Clusters of cases	13
Belize	19	0	2	0	Sporadic cases	2
Saint Lucia	19	0	0	0	Sporadic cases	3
Dominica	16	0	0	0	Clusters of cases	59
Saint Kitts and Nevis	15	0	0	0	Sporadic cases	49
Territoriesⁱⁱ						
Puerto Rico	5 046	61	142	0	Community transmission	0
French Guiana	729	40	2	1	Clusters of cases	0
Martinique	202	0	14	0	Clusters of cases	2
Cayman Islands	164	0	1	0	Clusters of cases	2
Guadeloupe	164	0	14	0	Clusters of cases	3

Reporting Country/ Territory/Area	Total confirmed cases	Total confirmed new cases	Total deaths	Total new deaths	Transmission classification ¹	Days since last reported case
Bermuda	141	0	9	0	Clusters of cases	6
Aruba	101	0	3	0	No cases	34
Sint Maarten	77	0	15	0	Sporadic cases	3
United States Virgin Islands	71	0	6	0	Clusters of cases	4
Saint Martin	41	0	3	0	Sporadic cases	9
Curaçao	21	0	1	0	Sporadic cases	4
Falkland Islands (Malvinas)	13	0	0	0	Clusters of cases	44
Turks and Caicos Islands	12	0	1	0	Sporadic cases	42
Montserrat	11	0	1	0	Sporadic cases	56
British Virgin Islands	8	0	1	0	Sporadic cases	24
Bonaire, Sint Eustatius and Saba	7	0	0	0	No cases	14
Saint Barthélemy	6	0	0	0	Sporadic cases	70
Anguilla	3	0	0	0	Sporadic cases	66
Saint Pierre and Miquelon	1	0	0	0	Sporadic cases	62
Eastern Mediterranean						
Iran (Islamic Republic of)	173 832	2 043	8 351	70	Community transmission	0
Pakistan	108 317	4 646	2 172	105	Clusters of cases	0
Saudi Arabia	105 283	3 369	746	34	Clusters of cases	0
Qatar	70 158	1 368	57	3	Community transmission	0
United Arab Emirates	39 376	568	281	5	Pending	0
Egypt	35 444	1 365	1 271	34	Clusters of cases	0
Kuwait	32 510	662	269	5	Clusters of cases	0
Afghanistan	21 222	305	376	7	Clusters of cases	0
Oman	17 486	604	81	6	Clusters of cases	0

Reporting Country/ Territory/Area	Total confirmed cases	Total confirmed new cases	Total deaths	Total new deaths	Transmission classification ⁱ	Days since last reported case
Bahrain	15 417	654	27	1	Clusters of cases	0
Iraq	13 481	1 115	370	24	Clusters of cases	0
Morocco	8 302	78	208	0	Clusters of cases	0
Sudan	6 244	161	372	13	Community transmission	0
Djibouti	4 278	71	31	3	Clusters of cases	0
Somalia	2 368	34	84	1	Sporadic cases	0
Lebanon	1 350	19	30	0	Clusters of cases	0
Tunisia	1 087	0	49	0	Community transmission	5
Jordan	831	23	9	0	Clusters of cases	0
Yemen	500	12	113	0	Pending	0
Libya	332	76	5	0	Clusters of cases	0
Syrian Arab Republic	144	3	6	0	Community transmission	0
Territoriesⁱⁱ						
occupied Palestinian territory	652	9	5	0	Clusters of cases	0
Europe						
Russian Federation	485 253	8 595	6 142	171	Clusters of cases	0
The United Kingdom	287 403	1 205	40 597	55	Community transmission	0
Spain	241 717	167	27136	0	Community transmission	0
Italy	235 278	280	33 964	65	Community transmission	0
Germany	184 543	350	8 711	37	Community transmission	0
Turkey	171 121	989	4 711	19	Community transmission	0
France	150 413	98	29 149	52	Community transmission	0
Belgium	59 348	122	9 609	14	Community transmission	0
Belarus	49 453	823	276	7	Community transmission	0

Reporting Country/ Territory/Area	Total confirmed cases	Total confirmed new cases	Total deaths	Total new deaths	Transmission classification ¹	Days since last reported case
Netherlands	47 739	165	6 016	3	Community transmission	0
Sweden	45 133	403	4 694	35	Community transmission	0
Portugal	34 885	392	1 485	6	Community transmission	0
Switzerland	30 889	7	1660	0	Community transmission	0
Ukraine	27 856	394	810	13	Community transmission	0
Poland	27 160	599	1 166	9	Community transmission	0
Ireland	25 207	6	1 683	4	Community transmission	0
Romania	20 604	125	1 334	8	Community transmission	0
Israel	17 915	132	295	1	Pending	0
Austria	16 889	21	672	0	Community transmission	0
Armenia	13 675	350	217	6	Community transmission	0
Kazakhstan	13 074	215	58	2	Clusters of cases	0
Denmark	11 962	14	593	4	Community transmission	0
Serbia	11 896	73	250	1	Pending	0
Republic of Moldova	9 807	107	359	13	Community transmission	0
Czechia	9 697	69	328	1	Clusters of cases	0
Norway	8 547	43	239	1	Clusters of cases	0
Azerbaijan	7 876	323	93	5	Clusters of cases	0
Finland	7 001	20	323	0	Pending	0
Tajikistan	4 609	80	48	0	Pending	0
Uzbekistan	4 448	96	18	1	Clusters of cases	0
Luxembourg	4 040	1	110	0	Clusters of cases	0
Hungary	4 014	44	548	6	Community transmission	0
North Macedonia	3 155	127	156	3	Clusters of cases	0

Reporting Country/ Territory/Area	Total confirmed cases	Total confirmed new cases	Total deaths	Total new deaths	Transmission classification ⁱ	Days since last reported case
Greece	3 049	97	182	2	Clusters of cases	0
Bulgaria	2 810	83	164	4	Clusters of cases	0
Bosnia and Herzegovina	2 703	30	159	0	Community transmission	0
Croatia	2 247	0	104	0	Sporadic cases	4
Kyrgyzstan	2 055	23	24	1	Clusters of cases	0
Estonia	1 940	1	69	0	Pending	0
Iceland	1 807	0	10	0	Community transmission	1
Lithuania	1 720	6	71	0	Community transmission	0
Slovakia	1 530	2	28	0	Clusters of cases	0
Slovenia	1 485	0	108	0	Clusters of cases	2
Albania	1 299	36	34	0	Clusters of cases	0
Latvia	1 088	0	26	1	Clusters of cases	1
Cyprus	970	6	18	0	Clusters of cases	0
Andorra	852	0	51	0	Community transmission	4
Georgia	818	8	13	0	Community transmission	0
San Marino	695	0	42	0	Community transmission	4
Malta	630	1	9	0	Sporadic cases	0
Montenegro	324	0	9	0	Clusters of cases	34
Monaco	99	0	1	0	Sporadic cases	2
Liechtenstein	83	0	1	0	Pending	44
Holy See	12	0	0	0	Sporadic cases	33
Territoriesⁱⁱ						
Kosovo ^[1]	1 263	72	31	1	Community transmission	0
Isle of Man	336	0	24	0	Pending	18

Reporting Country/ Territory/Area	Total confirmed cases	Total confirmed new cases	Total deaths	Total new deaths	Transmission classification ¹	Days since last reported case
Jersey	311	0	30	0	Community transmission	1
Guernsey	252	0	13	0	Community transmission	37
Faroe Islands	187	0	0	0	Pending	46
Gibraltar	176	1	0	0	Clusters of cases	0
Greenland	13	0	0	0	Pending	11
South-East Asia						
India	266 598	9 987	7 466	331	Clusters of cases	0
Bangladesh	68 504	2 735	930	42	Community transmission	0
Indonesia	32 033	847	1 883	32	Community transmission	0
Nepal	3 762	314	14	1	Sporadic cases	0
Thailand	3 121	2	58	0	Clusters of cases	0
Maldives	1 916	13	8	0	Clusters of cases	0
Sri Lanka	1 857	22	11	0	Clusters of cases	0
Myanmar	244	2	6	0	Clusters of cases	0
Bhutan	59	0	0	0	Sporadic cases	1
Timor-Leste	24	0	0	0	Clusters of cases	46
Western Pacific						
China	84 638	4	4 645	0	Clusters of cases	0
Singapore	38 296	386	25	0	Clusters of cases	0
Philippines	22 474	579	1 011	8	Community transmission	0
Japan	17 210	36	916	0	Clusters of cases	0
Republic of Korea	11 852	38	274	1	Clusters of cases	0
Malaysia	8329	7	117	0	Clusters of cases	0

Reporting Country/ Territory/Area	Total confirmed cases	Total confirmed new cases	Total deaths	Total new deaths	Transmission classification ⁱ	Days since last reported case
Australia	7 265	5	102	0	Clusters of cases	0
New Zealand	1 154	0	22	0	Clusters of cases	18
Viet Nam	332	3	0	0	Clusters of cases	0
Mongolia	194	1	0	0	Sporadic cases	0
Brunei Darussalam	141	0	2	0	Clusters of cases	32
Cambodia	126	0	0	0	Sporadic cases	2
Lao People's Democratic Republic	19	0	0	0	Sporadic cases	57
Fiji	18	0	0	0	Sporadic cases	49
Papua New Guinea	8	0	0	0	Sporadic cases	47
Territoriesⁱⁱ						
Guam	171	0	5	0	Clusters of cases	4
French Polynesia	60	0	0	0	Sporadic cases	34
Northern Mariana Islands (Commonwealth of the)	28	1	2	0	Pending	0
New Caledonia	20	0	0	0	Sporadic cases	4
Subtotal for all regions	7 039 177	108 918	404 383	3 539		
Other*	741	0	13	0	Not applicable	-
Grand total	7 039 918	108 918	404 396	3 539		

**See [Annex 1](#) for data, table and figure notes.

Technical guidance and other resources

- To view all technical guidance documents regarding COVID-19, please go to [this webpage](#).
- Updates from WHO regional offices
 - [WHO AFRO](#)
 - [WHO EMRO](#)
 - [WHO EURO](#)
 - [WHO PAHO](#)
 - [WHO SEARO](#)
 - [WHO WPRO](#)
- [Research and Development](#)
- [Online courses on COVID-19](#) and in [additional national languages](#)
- [The Strategic Preparedness and Response Plan](#) (SPRP) outlining the support the international community can provide to all countries to prepare and respond to the virus
- [WHO Coronavirus Disease \(COVID-19\) Dashboard](#)
- [Weekly COVID-19 Operations Updates](#)

Recommendations and advice for the public

- [Protect yourself](#)
- [Questions and answers](#)
- [Travel advice](#)
- [EPI-WIN](#): tailored information for individuals, organizations and communities

Case definitions

WHO periodically updates the [Global Surveillance for human infection with coronavirus disease \(COVID-19\)](#) document which includes surveillance definitions.

Definition of COVID-19 death

COVID-19 death is defined for surveillance purposes as a death resulting from a clinically compatible illness in a probable or confirmed COVID-19 case, unless there is a clear alternative cause of death that cannot be related to COVID-19 disease (e.g. trauma). There should be no period of complete recovery between the illness and death.

Further guidance for certification and classification (coding) of COVID-19 as cause of death is available [here and here](#).

Annex 1: Data, table and figure notes

Caution must be taken when interpreting all data presented. Differences are to be expected between information products published by WHO, national public health authorities, and other sources using different inclusion criteria and different data cut-off times. While steps are taken to ensure accuracy and reliability, all data are subject to continuous verification and change. Case detection, definitions, testing strategies, reporting practice, and lag times differ between countries/territories/areas. These factors, amongst others, influence the counts presented, with variable underestimation of true case and death counts, and variable delays to reflecting these data at global level.

The designations employed, and the presentation of these materials do not imply the expression of any opinion whatsoever on the part of WHO concerning the legal status of any country, territory or area or of its authorities, or concerning the delimitation of its frontiers or boundaries. Dotted and dashed lines on maps represent approximate border lines for which there may not yet be full agreement. Countries, territories and areas are arranged under the administering WHO region.

The mention of specific companies or of certain manufacturers' products does not imply that they are endorsed or recommended by WHO in preference to others of a similar nature that are not mentioned. Errors and omissions excepted, the names of proprietary products are distinguished by initial capital letters.

^[1] All references to Kosovo should be understood to be in the context of the United Nations Security Council resolution 1244 (1999).

Counts reflect laboratory-confirmed cases and deaths, based on [WHO case definitions](#), unless stated otherwise (see Country, territory, or area-specific updates and errata), and include both domestic and repatriated cases.

Other*: includes cases reported from international conveyances.

Due to the recent trend of countries conducting data reconciliation exercises which remove large numbers of cases or deaths from their total counts, WHO will now display such data as negative numbers in the "new cases" / "new deaths" columns as appropriate. This will aid readers in identifying when such adjustments occur. When additional details become available that allow the subtractions to be suitably apportioned to previous days, graphics will be updated accordingly. Prior situation reports will not be edited; see covid19.who.int for the most up-to-date data.

Additional table notes

ⁱ Transmission classification is based on a process of country/territory/area self-reporting. Classifications are reviewed on a weekly basis and may be revised as new information becomes available. and. Differing degrees of transmission may be present within countries/territories/areas; classification is based on the highest category reported within a country/territory/area. Categories:

- No cases: with no confirmed cases
- Sporadic cases: with one or more cases, imported or locally detected
- Clusters of cases: experiencing cases, clustered in time, geographic location and/or by common exposures

- Community transmission: experiencing larger outbreaks of local transmission defined through an assessment of factors including, but not limited to: large numbers of cases not linkable to transmission chains; large numbers of cases from sentinel lab surveillance; and/or multiple unrelated clusters in several areas of the country/territory/area
- Pending: transmission classification has not been reported to WHO

ii “Territories” include territories, areas, overseas dependencies and other jurisdictions of similar status.

Country, territory, or area-specific updates and errata

- **Update 9 June, 2020 Congo:** Counts adjusted retrospectively by national authorities: 2 deaths were excluded.