

Coronavirus disease (COVID-19)

Situation Report – 146

Data as received by WHO from national authorities by 10:00 CEST, 14 June 2020

Highlights

The investigation of a cluster of COVID-19 in Beijing associated with a wholesale market continues. As of 14 June, 16:00 (CEST+6), Chinese authorities reported a total of 77 cases since 11 June, including 2 linked cases in Liaoning Province. See below for more information and [press statement](#) issued on 13 June.

World Elder Abuse Awareness Day takes place every year on 15 June as designated by the United Nations General Assembly. [It is believed that abuse towards older people has risen significantly during the COVID-19 pandemic.](#) This makes a compelling case for [World Elder Abuse Awareness Day's](#) call for decision-makers to develop universally applicable normative standards for the protection of older people.

Situation in numbers (by WHO Region)

Total (new cases in last 24 hours)

Globally	7 690 708 cases (137 526)	427 630 deaths (4 281)
Africa	167 566 cases (6 312)	3 998 deaths (131)
Americas	3 711 768 cases (73 243)	199 252 deaths (2 812)
Eastern Mediterranean	758 551 cases (20 910)	16 640 deaths (380)
Europe	2 398 779 cases (19 821)	188 001 deaths (533)
South-East Asia	455 439 cases (16 091)	12 526 deaths (400)
Western Pacific	197 864 cases (1 149)	7 200 deaths (25)

Surveillance

Update on a cluster of COVID-19 in Beijing, People's Republic of China

After 56 days of no reported confirmed COVID-19 cases or asymptomatic infections in Beijing, People's Republic of China, a local case of COVID-19 with no known travel history or contact with a case was reported on 11 June.

WHO published a [press release](#) summarizing the event as of 13 June.

From 11-14 June (as of 18:00 CEST+6 14 June), 77 symptomatic laboratory-confirmed cases have been identified related to this cluster in Beijing, including two cases who travelled to Liaoning Province. An additional 46 laboratory confirmed cases, reported without symptoms, have been identified through active screening in the area. The initial symptomatic cases were identified from presentation at six fever clinics and most of the initial cases were linked to the Xinfadi Market in Beijing.

Preliminary investigations continue and as of 14 June, WHO is aware of 40 environmental samples from the Xinfadi market, which have tested positive for SARS-CoV-2 using molecular tests (RT-PCR). Genetic sequencing from humans and environmental samples is ongoing and WHO encourages the release of these sequences as soon as possible. WHO understands that genetic sequences will be released as soon as possible once further laboratory analyses are completed.

Chinese officials have informed WHO of ongoing investigations into the source of the cluster as well as the extent of the current infection among contacts and others who have visited markets in recent weeks.

WHO recommends that thorough investigations continue to better understand the source of the cluster (exploring multiple hypotheses) and the extent of infection.

All identified cases are currently isolated and receiving care, depending on clinical presentation, and contacts of all cases, including those without symptoms, are being followed up and tested.

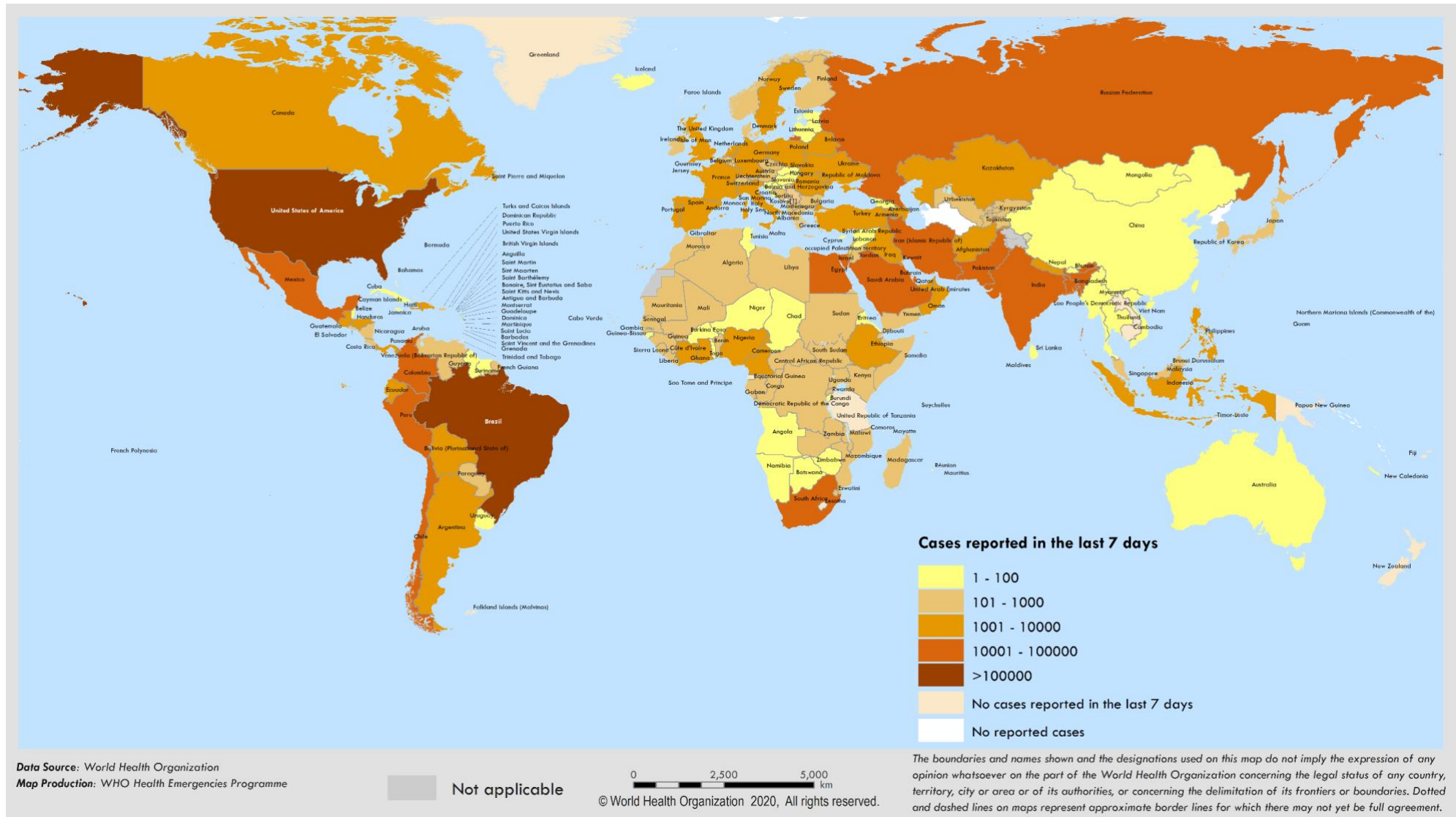
The public health response by Chinese officials includes:

- Tracing and monitoring of close contacts of all laboratory confirmed cases (regardless of the development of symptoms).
- Six wholesale food markets in Beijing have fully or partially closed operations.
- Those working in Xinfadi Market, those living in the surrounding residential compounds, and those who have visited the Xinfadi Market in the preceding weeks are being traced and will undergo testing.
- Under the Emergency Response framework, some of the local measures that were relaxed had been re-implemented in Beijing.
- Enhanced screening measures implemented at points of entry.

WHO is closely monitoring the situation and is in close contact with national authorities in China.

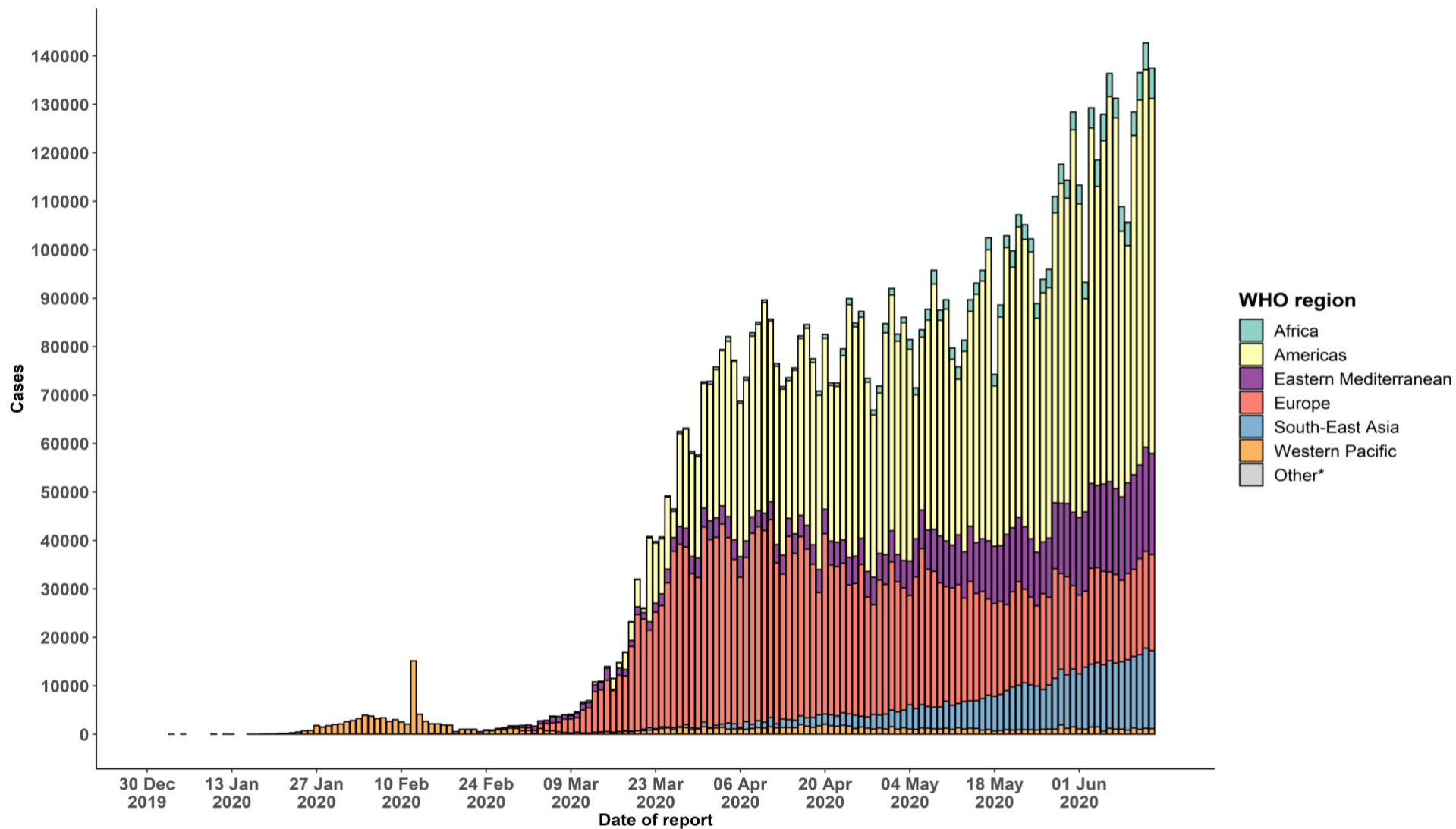
Surveillance

Figure 1. Number of confirmed COVID-19 cases reported in the last seven days by country, territory or area, 08 June to 14 June**



**See [Annex 1](#) for data, table and figure notes.

Figure 2. Number of confirmed COVID-19 cases, by date of report and WHO region, 30 December through 14 June**



**See [Annex 1](#) for data, table and figure notes.

Table 1. Countries, territories or areas with reported laboratory-confirmed COVID-19 cases and deaths, by WHO region. Data as of 10 AM CEST, 14 June 2020**

Reporting Country/ Territory/Area	Total confirmed cases	Total confirmed new cases	Total deaths	Total new deaths	Transmission classification ⁱ	Days since last reported case
Africa						
South Africa	65 736	3 809	1 423	69	Community transmission	0
Nigeria	15 181	627	399	12	Community transmission	0
Ghana	11 118	262	48	0	Community transmission	0
Algeria	10 810	112	760	9	Community transmission	0
Cameroon	8 743	0	270	0	Community transmission	1
Senegal	4 996	145	60	4	Community transmission	0
Côte d'Ivoire	4 848	164	45	0	Community transmission	0
Democratic Republic of the Congo	4 723	87	105	5	Community transmission	0
Guinea	4 484	58	25	1	Community transmission	0
Gabon	3 463	0	23	0	Community transmission	2
Kenya	3 457	152	100	4	Community transmission	0
Ethiopia	3 166	251	55	8	Clusters of cases	0
Central African Republic	2 057	0	7	0	Clusters of cases	1
Mali	1 776	24	104	3	Community transmission	0
South Sudan	1 684	14	25	3	Clusters of cases	0
Mauritania	1 573	134	81	7	Clusters of cases	0
Guinea-Bissau	1 460	71	15	3	Community transmission	0
Zambia	1 357	36	10	0	Community transmission	0
Madagascar	1 252	22	10	0	Clusters of cases	0
Sierra Leone	1 132	29	51	0	Community transmission	0
Equatorial Guinea	1 043	0	12	0	Community transmission	21

Reporting Country/ Territory/Area	Total confirmed cases	Total confirmed new cases	Total deaths	Total new deaths	Transmission classification ¹	Days since last reported case
Niger	978	0	65	0	Community transmission	1
Burkina Faso	892	0	53	0	Community transmission	1
Chad	848	0	72	0	Community transmission	2
Uganda	823	15	0	0	Sporadic cases	0
Congo	779	34	25	0	Community transmission	0
Cabo Verde	726	29	6	0	Clusters of cases	0
Mozambique	553	44	2	0	Clusters of cases	0
Rwanda	541	31	2	0	Sporadic cases	0
Malawi	529	48	5	1	Clusters of cases	0
Togo	525	1	13	0	Community transmission	0
United Republic of Tanzania	509	0	21	0	Community transmission	37
Eswatini	486	14	3	0	Clusters of cases	0
Liberia	446	25	32	0	Community transmission	0
Benin	412	0	6	0	Community transmission	1
São Tomé and Príncipe	388	0	10	0	Clusters of cases	3
Zimbabwe	356	13	4	0	Sporadic cases	0
Mauritius	337	0	10	0	Clusters of cases	8
Comoros	176	13	2	0	Community transmission	0
Angola	138	8	6	1	Clusters of cases	0
Burundi	94	0	1	0	Clusters of cases	2
Eritrea	65	24	0	0	Sporadic cases	0
Botswana	60	0	1	0	Clusters of cases	1
Namibia	32	1	0	0	Sporadic cases	0

Reporting Country/ Territory/Area	Total confirmed cases	Total confirmed new cases	Total deaths	Total new deaths	Transmission classification ¹	Days since last reported case
Gambia	28	0	1	0	Sporadic cases	5
Seychelles	11	0	0	0	Clusters of cases	68
Lesotho	4	0	0	0	Sporadic cases	10
Territoriesⁱⁱ						
Mayotte	2 282	14	29	1	Clusters of cases	0
Réunion	489	1	1	0	Clusters of cases	0
Americas						
United States of America	2 032 524	22 133	114 466	709	Community transmission	0
Brazil	828 810	25 982	41 828	909	Community transmission	0
Peru	220 749	5 961	6 308	199	Community transmission	0
Chile	167 355	6 509	3 101	231	Community transmission	0
Mexico	139 196	5 222	16 448	504	Community transmission	0
Canada	97 943	413	8 049	55	Community transmission	0
Colombia	46 858	1 646	1 545	57	Community transmission	0
Ecuador	46 356	578	3 874	46	Community transmission	0
Argentina	28 764	1 391	802	30	Community transmission	0
Dominican Republic	22 572	564	577	9	Community transmission	0
Panama	19 211	625	421	3	Community transmission	0
Bolivia (Plurinational State of)	16 929	764	559	26	Community transmission	0
Guatemala	8 982	421	351	17	Community transmission	0
Honduras	8 132	463	306	12	Community transmission	0
Haiti	3 941	0	64	0	Community transmission	1
El Salvador	3 603	122	72	4	Community transmission	0
Venezuela (Bolivarian Republic of)	2 879	65	23	0	Community transmission	0

Reporting Country/ Territory/Area	Total confirmed cases	Total confirmed new cases	Total deaths	Total new deaths	Transmission classification ⁱ	Days since last reported case
Cuba	2 238	5	84	0	Clusters of cases	0
Nicaragua	1 655	0	55	0	Community transmission	3
Costa Rica	1 612	74	12	0	Clusters of cases	0
Paraguay	1 261	7	11	0	Community transmission	0
Uruguay	847	0	23	0	Clusters of cases	2
Jamaica	614	3	10	0	Clusters of cases	0
Suriname	187	19	3	1	Clusters of cases	0
Guyana	159	1	12	0	Clusters of cases	0
Trinidad and Tobago	117	0	8	0	Sporadic cases	13
Bahamas	103	0	11	0	Clusters of cases	7
Barbados	96	0	7	0	Clusters of cases	3
Saint Vincent and the Grenadines	27	0	0	0	Sporadic cases	5
Antigua and Barbuda	26	1	3	0	Clusters of cases	0
Grenada	23	0	0	0	Clusters of cases	18
Belize	20	0	2	0	Sporadic cases	3
Saint Lucia	19	0	0	0	Sporadic cases	8
Dominica	18	0	0	0	Clusters of cases	1
Saint Kitts and Nevis	15	0	0	0	Sporadic cases	54
Territoriesⁱⁱ						
Puerto Rico	5 690	154	146	0	Community transmission	0
French Guiana	1 161	118	2	0	Clusters of cases	0
Martinique	202	0	14	0	Clusters of cases	7
Cayman Islands	187	1	1	0	Clusters of cases	0
Guadeloupe	171	0	14	0	Clusters of cases	1

Reporting Country/ Territory/Area	Total confirmed cases	Total confirmed new cases	Total deaths	Total new deaths	Transmission classification ¹	Days since last reported case
Bermuda	142	1	9	0	Clusters of cases	0
Aruba	101	0	3	0	No cases	39
Sint Maarten	77	0	15	0	Sporadic cases	8
United States Virgin Islands	72	0	6	0	Clusters of cases	3
Saint Martin	41	0	3	0	Sporadic cases	14
Curaçao	22	0	1	0	Sporadic cases	3
Falkland Islands (Malvinas)	13	0	0	0	Clusters of cases	49
Turks and Caicos Islands	12	0	1	0	Sporadic cases	47
Montserrat	11	0	1	0	Sporadic cases	61
British Virgin Islands	8	0	1	0	Sporadic cases	29
Bonaire, Sint Eustatius and Saba	7	0	0	0	No cases	19
Saint Barthélemy	6	0	0	0	Sporadic cases	75
Anguilla	3	0	0	0	Sporadic cases	71
Saint Pierre and Miquelon	1	0	0	0	Sporadic cases	67
Eastern Mediterranean						
Iran (Islamic Republic of)	184 955	2 410	8 730	71	Community transmission	0
Pakistan	139 230	6 825	2 632	81	Clusters of cases	0
Saudi Arabia	123 308	3 366	932	39	Clusters of cases	0
Qatar	78 416	1 828	70	0	Community transmission	0
Egypt	42 980	1 677	1 484	62	Clusters of cases	0
United Arab Emirates	41 990	491	288	1	Pending	0
Kuwait	35 466	514	289	4	Clusters of cases	0
Afghanistan	24 766	664	471	20	Clusters of cases	0
Oman	22 077	1 006	99	3	Clusters of cases	0

Reporting Country/ Territory/Area	Total confirmed cases	Total confirmed new cases	Total deaths	Total new deaths	Transmission classification ¹	Days since last reported case
Iraq	18 950	1 180	549	53	Clusters of cases	0
Bahrain	18 227	514	39	3	Clusters of cases	0
Morocco	8 692	82	212	0	Clusters of cases	0
Sudan	7 007	128	447	14	Community transmission	0
Djibouti	4 449	8	41	3	Clusters of cases	0
Somalia	2 579	66	87	2	Sporadic cases	0
Lebanon	1 442	20	32	1	Clusters of cases	0
Tunisia	1 094	1	49	0	Community transmission	0
Jordan	953	38	9	0	Clusters of cases	0
Yemen	709	73	161	21	Pending	0
Libya	418	9	8	2	Clusters of cases	0
Syrian Arab Republic	170	6	6	0	Community transmission	0
Territoriesⁱⁱ						
occupied Palestinian territory	673	4	5	0	Clusters of cases	0
Europe						
Russian Federation	528 964	8 835	6 948	119	Clusters of cases	0
The United Kingdom	294 379	1 425	41 662	181	Community transmission	0
Spain	243 605	396	27 136	0	Community transmission	0
Italy	236 651	346	34 301	78	Community transmission	0
Germany	186 269	247	8 787	6	Community transmission	0
Turkey	176 677	1 459	4792	14	Community transmission	0
France	152 460	393	29 335	23	Community transmission	0
Belgium	59 918	99	9 650	4	Community transmission	0
Belarus	53 241	721	303	5	Community transmission	0

Reporting Country/ Territory/Area	Total confirmed cases	Total confirmed new cases	Total deaths	Total new deaths	Transmission classification ¹	Days since last reported case
Sweden	50 931	1 247	4 874	20	Community transmission	0
Netherlands	48 640	179	6 057	4	Community transmission	0
Portugal	36 463	283	1 512	7	Community transmission	0
Ukraine	31 154	648	889	9	Community transmission	0
Switzerland	31 011	31	1 676	0	Community transmission	0
Poland	29 017	440	1 237	15	Community transmission	0
Ireland	25 295	45	1 705	0	Community transmission	0
Romania	21 679	275	1 391	11	Community transmission	0
Israel	18 876	175	300	0	Pending	0
Austria	17 014	20	677	2	Community transmission	0
Armenia	16 667	663	269	5	Community transmission	0
Kazakhstan	14 496	258	73	3	Clusters of cases	0
Serbia	12 251	76	253	1	Pending	0
Denmark	12 139	40	597	3	Community transmission	0
Republic of Moldova	11 459	366	399	4	Community transmission	0
Czechia	9 991	53	329	0	Clusters of cases	0
Azerbaijan	9 570	352	115	2	Clusters of cases	0
Norway	8 606	0	242	0	Clusters of cases	1
Finland	7 087	14	325	0	Pending	0
Uzbekistan	4 994	93	19	0	Clusters of cases	0
Tajikistan	4 971	69	50	1	Pending	0
Hungary	4 064	11	559	4	Community transmission	0
Luxembourg	4 063	8	110	0	Clusters of cases	0
North Macedonia	3 902	196	179	8	Clusters of cases	0

Reporting Country/ Territory/Area	Total confirmed cases	Total confirmed new cases	Total deaths	Total new deaths	Transmission classification ⁱ	Days since last reported case
Bulgaria	3 266	75	172	0	Clusters of cases	0
Greece	3 112	4	183	0	Clusters of cases	0
Bosnia and Herzegovina	2 892	0	162	0	Community transmission	1
Kyrgyzstan	2 285	78	27	0	Clusters of cases	0
Croatia	2 251	2	107	0	Sporadic cases	0
Estonia	1 973	3	69	0	Sporadic cases	0
Iceland	1 808	1	10	0	Community transmission	0
Lithuania	1 763	7	75	1	Community transmission	0
Slovakia	1 545	3	28	0	Clusters of cases	0
Albania	1 521	57	36	0	Clusters of cases	0
Slovenia	1 492	2	109	0	Clusters of cases	0
Latvia	1 097	1	28	1	Clusters of cases	0
Cyprus	980	0	18	0	Clusters of cases	1
Georgia	864	13	14	1	Community transmission	0
Andorra	853	0	51	0	Community transmission	1
San Marino	695	0	42	0	Community transmission	9
Malta	646	1	9	0	Sporadic cases	0
Montenegro	324	0	9	0	Clusters of cases	39
Monaco	99	0	1	0	Sporadic cases	7
Liechtenstein	83	0	1	0	Pending	49
Holy See	12	0	0	0	Sporadic cases	38
Territoriesⁱⁱ						
Kosovo ^[1]	1 437	111	32	1	Community transmission	0
Isle of Man	336	0	24	0	Pending	23

Reporting Country/ Territory/Area	Total confirmed cases	Total confirmed new cases	Total deaths	Total new deaths	Transmission classification ¹	Days since last reported case
Jersey	313	0	30	0	Community transmission	4
Guernsey	252	0	13	0	Community transmission	42
Faroe Islands	187	0	0	0	Pending	51
Gibraltar	176	0	0	0	Clusters of cases	5
Greenland	13	0	0	0	Pending	16
South-East Asia						
India	320 922	11 929	9 195	311	Clusters of cases	0
Bangladesh	84 379	2 856	1 139	44	Community transmission	0
Indonesia	37 420	1 014	2 091	43	Community transmission	0
Nepal	5 335	273	18	2	Sporadic cases	0
Thailand	3 135	1	58	0	Clusters of cases	0
Maldives	2 013	10	8	0	Clusters of cases	0
Sri Lanka	1 884	4	11	0	Clusters of cases	0
Myanmar	261	0	6	0	Clusters of cases	2
Bhutan	66	4	0	0	Sporadic cases	0
Timor-Leste	24	0	0	0	Clusters of cases	51
Western Pacific						
China	84 729	58	4 645	0	Clusters of cases	0
Singapore	40 197	347	26	1	Clusters of cases	0
Philippines	25 392	605	1 074	22	Community transmission	0
Japan	17 429	47	925	1	Clusters of cases	0
Republic of Korea	12 085	34	277	0	Clusters of cases	0
Malaysia	8 445	43	120	1	Clusters of cases	0

Reporting Country/ Territory/Area	Total confirmed cases	Total confirmed new cases	Total deaths	Total new deaths	Transmission classification ⁱ	Days since last reported case
Australia	7 302	12	102	0	Clusters of cases	0
New Zealand	1 154	0	22	0	Clusters of cases	23
Viet Nam	334	2	0	0	Clusters of cases	0
Mongolia	197	0	0	0	Sporadic cases	1
Brunei Darussalam	141	0	2	0	Clusters of cases	37
Cambodia	126	0	0	0	Sporadic cases	7
Lao People's Democratic Republic	19	0	0	0	Sporadic cases	62
Fiji	18	0	0	0	Sporadic cases	54
Papua New Guinea	8	0	0	0	Sporadic cases	52
Territoriesⁱⁱ						
Guam	177	1	5	0	Clusters of cases	0
French Polynesia	60	0	0	0	Sporadic cases	39
Northern Mariana Islands (Commonwealth of the)	30	0	2	0	Pending	4
New Caledonia	21	0	0	0	Sporadic cases	4
Subtotal for all regions	7 689 967	137 526	427 617	4 281		
Other*	741	0	13	0	Not applicable	-
Grand total	7 690 708	137 526	427 630	4 281		

**See [Annex 1](#) for data, table and figure notes.

Technical guidance and other resources

- To view all technical guidance documents regarding COVID-19, please go to [this webpage](#).
- Updates from WHO regional offices
 - [WHO AFRO](#)
 - [WHO EMRO](#)
 - [WHO EURO](#)
 - [WHO PAHO](#)
 - [WHO SEARO](#)
 - [WHO WPRO](#)
- [Research and Development](#)
- [Online courses on COVID-19](#) and in [additional national languages](#)
- [The Strategic Preparedness and Response Plan \(SPRP\)](#) outlining the support the international community can provide to all countries to prepare and respond to the virus
- [WHO Coronavirus Disease \(COVID-19\) Dashboard](#)
- [Weekly COVID-19 Operations Updates](#)

Recommendations and advice for the public

- [Protect yourself](#)
- [Questions and answers](#)
- [Travel advice](#)
- [EPI-WIN](#): tailored information for individuals, organizations and communities

Case definitions

WHO periodically updates the [Global Surveillance for human infection with coronavirus disease \(COVID-19\)](#) document which includes surveillance definitions.

Definition of COVID-19 death

A COVID-19 death is defined for surveillance purposes as a death resulting from a clinically compatible illness in a probable or confirmed COVID-19 case, unless there is a clear alternative cause of death that cannot be related to COVID-19 disease (e.g. trauma). There should be no period of complete recovery between the illness and death.

Further guidance for certification and classification (coding) of COVID-19 as cause of death is available [here](#) and [here](#).

Annex 1: Data, table and figure notes

Caution must be taken when interpreting all data presented. Differences are to be expected between information products published by WHO, national public health authorities, and other sources using different inclusion criteria and different data cut-off times. While steps are taken to ensure accuracy and reliability, all data are subject to continuous verification and change. Case detection, definitions, testing strategies, reporting practice, and lag times differ between countries/territories/areas. These factors, amongst others, influence the counts presented, with variable underestimation of true case and death counts, and variable delays to reflecting these data at global level.

The designations employed, and the presentation of these materials do not imply the expression of any opinion whatsoever on the part of WHO concerning the legal status of any country, territory or area or of its authorities, or concerning the delimitation of its frontiers or boundaries. Dotted and dashed lines on maps represent approximate border lines for which there may not yet be full agreement. Countries, territories and areas are arranged under the administering WHO region.

The mention of specific companies or of certain manufacturers' products does not imply that they are endorsed or recommended by WHO in preference to others of a similar nature that are not mentioned. Errors and omissions excepted, the names of proprietary products are distinguished by initial capital letters.

[1] All references to Kosovo should be understood to be in the context of the United Nations Security Council resolution 1244 (1999). In the map, number of cases of Serbia and Kosovo (UNSCR 1244, 1999) have been aggregated for visualization purposes.

Counts reflect laboratory-confirmed cases and deaths, based on [WHO case definitions](#), unless stated otherwise (see Country, territory, or area-specific updates and errata), and include both domestic and repatriated cases.

Other*: includes cases reported from international conveyances.

Due to the recent trend of countries conducting data reconciliation exercises which remove large numbers of cases or deaths from their total counts, WHO will now display such data as negative numbers in the “new cases” / “new deaths” columns as appropriate. This will aid readers in identifying when such adjustments occur. When additional details become available that allow the subtractions to be suitably apportioned to previous days, graphics will be updated accordingly. Prior situation reports will not be edited; see covid19.who.int for the most up-to-date data.

Additional table notes

i Transmission classification is based on a process of country/territory/area self-reporting. Classifications are reviewed on a weekly basis and may be revised as new information becomes available. and. Differing degrees of transmission may be present within countries/territories/areas; classification is based on the highest category reported within a country/territory/area. Categories:

- No cases: with no confirmed cases
- Sporadic cases: with one or more cases, imported or locally detected
- Clusters of cases: experiencing cases, clustered in time, geographic location and/or by common exposures

- Community transmission: experiencing larger outbreaks of local transmission defined through an assessment of factors including, but not limited to: large numbers of cases not linkable to transmission chains; large numbers of cases from sentinel lab surveillance; and/or multiple unrelated clusters in several areas of the country/territory/area
- Pending: transmission classification has not been reported to WHO

ii “Territories” include territories, areas, overseas dependencies and other jurisdictions of similar status.

Country, territory, or area-specific updates and errata

- None