

Coronavirus disease (COVID-19)

Situation Report – 180

Data as received by WHO from national authorities by 10:00 CEST, 18 July 2020

Highlights

WHO has published an interim checklist for local authorities on [Practical actions in cities to strengthen preparedness for the COVID-19 pandemic and beyond](#). The checklist accompanies the interim guidance on [Strengthening preparedness for COVID-19 in cities and urban settings](#).

The WHO Regional Office for Europe joined the International Labour Organization (ILO) and UNICEF to issue a [policy paper](#) on how to [strengthen protection against, and address, social and economic shocks such as those caused by the pandemic](#).

Ghana's nurses are delivering child healthcare services to communities in need amid COVID-19. Segla, a community nurse who provides preventive healthcare to children in the north of Accra, emphasized [the importance of visiting households if pediatric patients do not attend clinics due to COVID-19](#).

Thank you for reading the WHO COVID-19 Situation Report! We would greatly appreciate any feedback and suggestions you may have on these reports via a [short anonymous survey](#).

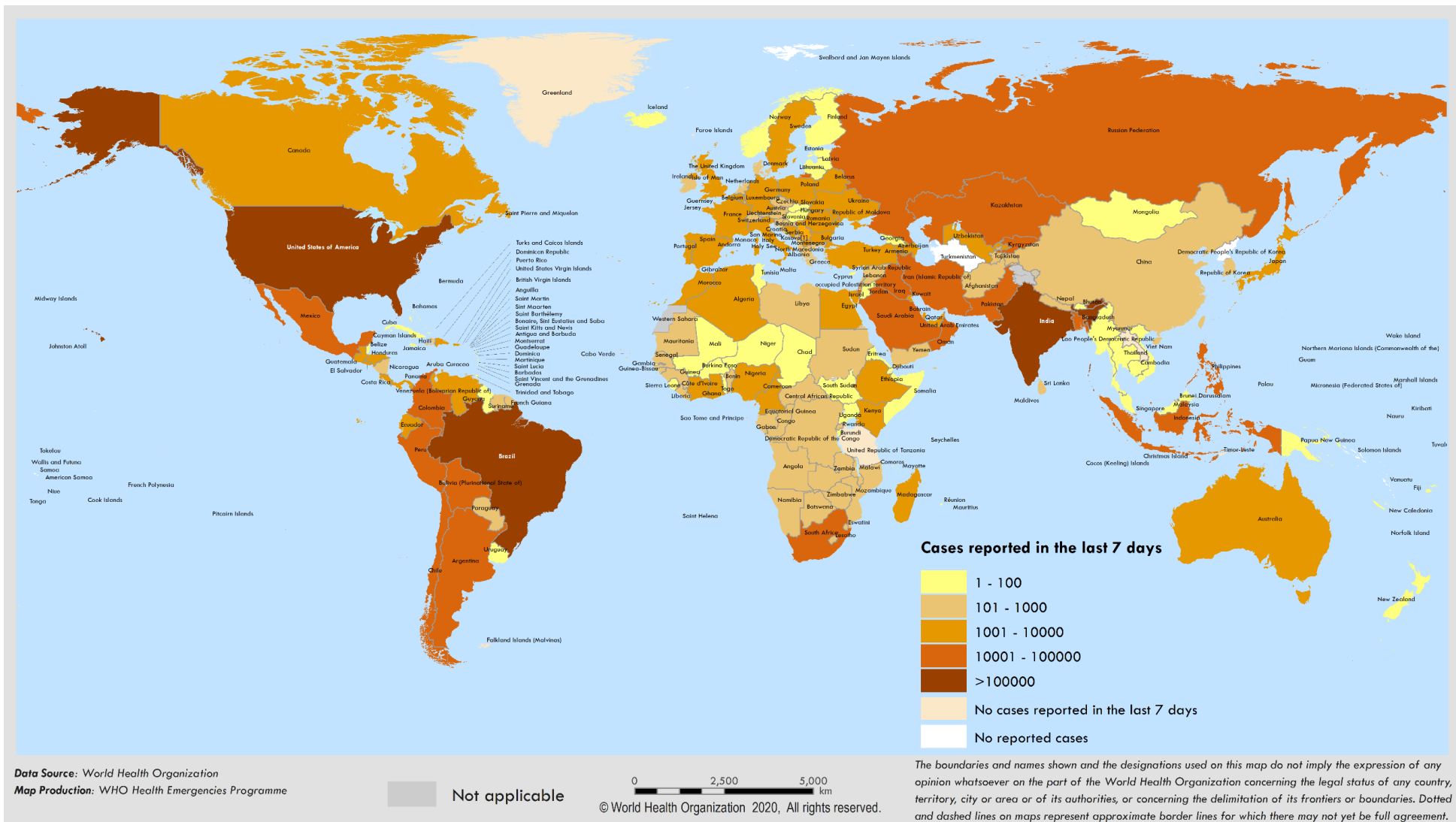
Situation in numbers (by WHO Region)

Total (new cases in last 24 hours)

Globally	13 876 441 cases (259 848)	593 087 deaths (7 360)
Africa	561 466 cases (18 344)	9 349 deaths (219)
Americas	7 306 371 cases (151 531)	302 508 deaths (4 653)
Eastern Mediterranean	1 360 791 cases (13 809)	33 738 deaths (457)
Europe	3 042 330 cases (33 358)	206 684 deaths (1 202)
South-East Asia	1 347 954 cases (39 513)	32 907 deaths (807)
Western Pacific	256 788 cases (3 293)	7 888 deaths (22)

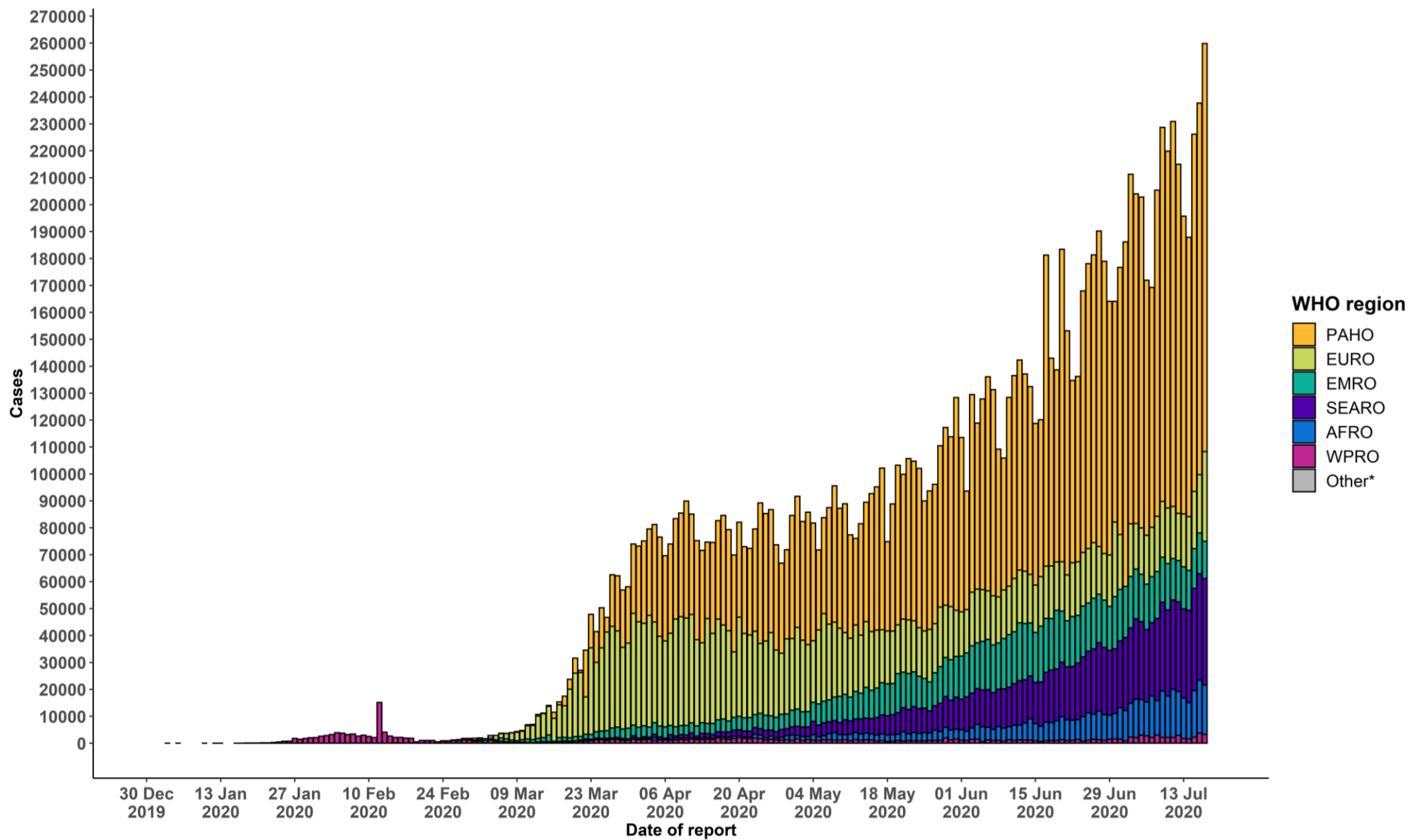
Surveillance

Figure 1. Number of confirmed* COVID-19 cases reported in the last seven days by country, territory or area, 12 July to 18 July **



**See [Annex 1](#) for data, table and figure notes.

Figure 2. Number of confirmed* COVID-19 cases, by date of report and WHO region, 30 December through 18 July**



**See [Annex 1](#) for data, table and figure notes.

Table 1. Countries, territories or areas with reported laboratory-confirmed* COVID-19 cases and deaths, by WHO region. Data as of 10 AM CEST, 18 July 2020**

Reporting Country/Territory/Area	Total confirmed* cases	Total confirmed* new cases	Total deaths	Total new deaths	Transmission classification ⁱ	Days since last reported case
Africa						
South Africa	337 594	13 373	4 804	135	Community transmission	0
Nigeria	35 454	600	772	3	Community transmission	0
Ghana	26 572	447	144	5	Community transmission	0
Algeria	21 948	593	1 057	5	Community transmission	0
Cameroon	16 157	100	373	4	Community transmission	0
Côte d'Ivoire	13 696	293	87	0	Community transmission	0
Kenya	12 062	389	222	5	Community transmission	0
Ethiopia	9 147	344	163	13	Community transmission	0
Senegal	8 544	63	160	4	Community transmission	0
Democratic Republic of the Congo	8 248	50	192	0	Community transmission	0
Madagascar	6 467	378	54	1	Community transmission	0
Guinea	6 430	71	39	0	Community transmission	0
Gabon	6 121	0	46	0	Community transmission	1
Mauritania	5 659	95	150	1	Community transmission	0
Central African Republic	4 389	16	53	0	Community transmission	0
Malawi	2 810	94	55	4	Clusters of cases	0
Zambia	2 810	527	109	27	Community transmission	0
Congo	2 633	275	49	1	Community transmission	0
Mali	2 467	27	121	0	Community transmission	0
Equatorial Guinea	2 350	0	41	0	Community transmission	1
South Sudan	2 191	0	43	0	Community transmission	1

Reporting Country/Territory/Area	Total confirmed* cases	Total confirmed* new cases	Total deaths	Total new deaths	Transmission classification ¹	Days since last reported case
Guinea-Bissau	1 950	23	26	0	Community transmission	0
Cabo Verde	1 939	45	20	1	Clusters of cases	0
Sierra Leone	1 688	10	65	1	Community transmission	0
Eswatini	1 619	67	21	0	Community transmission	0
Benin	1 602	139	31	3	Community transmission	0
Rwanda	1 485	12	4	0	Community transmission	0
Zimbabwe	1 420	58	24	1	Clusters of cases	0
Mozambique	1 402	19	9	0	Community transmission	0
Niger	1 102	0	69	0	Community transmission	1
Namibia	1 078	46	2	0	Clusters of cases	0
Liberia	1 070	0	68	0	Community transmission	1
Uganda	1 056	5	0	0	Clusters of cases	0
Burkina Faso	1 045	7	53	0	Community transmission	0
Chad	887	1	75	0	Community transmission	0
Togo	766	17	15	0	Community transmission	0
Sao Tome and Principe	741	1	14	0	Clusters of cases	0
Angola	638	31	29	1	Clusters of cases	0
Botswana	522	0	1	0	Clusters of cases	1
United Republic of Tanzania	509	0	21	0	Community transmission	71
Lesotho	359	103	6	3	Clusters of cases	0
Mauritius	343	0	10	0	Sporadic cases	4
Comoros	328	0	7	0	Community transmission	1
Burundi	310	0	1	0	Clusters of cases	1

Reporting Country/Territory/Area	Total confirmed* cases	Total confirmed* new cases	Total deaths	Total new deaths	Transmission classification ⁱ	Days since last reported case
Eritrea	251	0	0	0	Sporadic cases	1
Seychelles	108	0	0	0	Sporadic cases	2
Gambia	93	15	4	1	Sporadic cases	0
Territoriesⁱⁱ						
Mayotte	2 782	0	37	0	Clusters of cases	1
Réunion	624	10	3	0	Clusters of cases	0
Americas						
United States of America	3 544 143	71 484	137 674	921	Community transmission	0
Brazil	2 012 151	45 403	76 688	1 322	Community transmission	0
Peru	341 586	3 862	12 615	198	Community transmission	0
Chile	326 539	2 841	8 347	1 057	Community transmission	0
Mexico	324 041	6 406	37 574	668	Community transmission	0
Colombia	173 206	8 037	6 029	215	Community transmission	0
Argentina	114 783	3 623	2 133	61	Community transmission	0
Canada	109 264	435	8 827	17	Community transmission	0
Ecuador	72 444	1 079	5 250	43	Community transmission	0
Bolivia (Plurinational State of)	54 156	1 938	1 984	42	Community transmission	0
Panama	50 373	1 130	1 000	18	Community transmission	0
Dominican Republic	50 113	1 370	942	1	Community transmission	0
Guatemala	32 939	865	1 404	54	Community transmission	0
Honduras	30 867	831	835	10	Community transmission	0
El Salvador	11 207	250	309	11	Community transmission	0
Venezuela (Bolivarian Republic of)	10 854	426	104	4	Community transmission	0
Costa Rica	9 546	560	42	2	Community transmission	0

Reporting Country/Territory/Area	Total confirmed* cases	Total confirmed* new cases	Total deaths	Total new deaths	Transmission classification ⁱ	Days since last reported case
Haiti	6 948	46	145	0	Community transmission	0
Paraguay	3 342	144	27	2	Community transmission	0
Nicaragua	2 712	0	99	0	Community transmission	3
Cuba	2 444	4	87	0	Clusters of cases	0
Uruguay	1 026	17	32	1	Clusters of cases	0
Suriname	919	70	19	1	Clusters of cases	0
Jamaica	765	2	10	0	Clusters of cases	0
Guyana	315	2	19	0	Clusters of cases	0
Trinidad and Tobago	136	3	8	0	Sporadic cases	0
Bahamas	124	5	11	0	Clusters of cases	0
Barbados	104	0	7	0	Clusters of cases	1
Antigua and Barbuda	74	0	3	0	Clusters of cases	6
Belize	40	1	2	0	Sporadic cases	0
Saint Vincent and the Grenadines	35	0	0	0	Sporadic cases	4
Grenada	23	0	0	0	Clusters of cases	52
Saint Lucia	23	0	0	0	Sporadic cases	2
Dominica	18	0	0	0	Clusters of cases	35
Saint Kitts and Nevis	17	0	0	0	No cases	7
Territoriesⁱⁱ						
Puerto Rico	11 120	546	177	5	Community transmission	0
French Guiana	6 509	116	34	0	Community transmission	0
United States Virgin Islands	263	14	6	0	Clusters of cases	0
Martinique	261	6	15	0	Clusters of cases	0
Cayman Islands	203	0	1	0	Clusters of cases	3

Reporting Country/Territory/Area	Total confirmed* cases	Total confirmed* new cases	Total deaths	Total new deaths	Transmission classification ¹	Days since last reported case
Guadeloupe	195	5	14	0	Clusters of cases	0
Bermuda	152	2	9	0	Sporadic cases	0
Aruba	108	2	3	0	Sporadic cases	0
Sint Maarten	79	0	15	0	No cases	2
Turks and Caicos Islands	74	2	2	0	Clusters of cases	0
Saint Martin	46	2	3	0	Sporadic cases	0
Curaçao	28	2	1	0	No cases	0
Falkland Islands (Malvinas)	13	0	0	0	No cases	83
Montserrat	12	0	1	0	No cases	7
Bonaire, Sint Eustatius and Saba	10	0	0	0	No cases	1
British Virgin Islands	8	0	1	0	No cases	63
Saint Barthélemy	6	0	0	0	No cases	109
Saint Pierre and Miquelon	4	0	0	0	Sporadic cases	1
Anguilla	3	0	0	0	No cases	105
Eastern Mediterranean						
Iran (Islamic Republic of)	269 440	2 379	13 791	183	Community transmission	0
Pakistan	261 917	1 918	5 522	47	Clusters of cases	0
Saudi Arabia	245 851	2 613	2 407	37	Clusters of cases	0
Qatar	105 898	421	153	1	Community transmission	0
Iraq	88 171	2 023	3 616	94	Community transmission	0
Egypt	86 474	703	4 188	68	Clusters of cases	0
Oman	64 193	1 619	298	8	Community transmission	0
Kuwait	58 221	553	404	2	Clusters of cases	0
United Arab Emirates	56 422	293	337	2	Community transmission	0

Reporting Country/Territory/Area	Total confirmed* cases	Total confirmed* new cases	Total deaths	Total new deaths	Transmission classification ⁱ	Days since last reported case
Bahrain	35 473	389	124	3	Clusters of cases	0
Afghanistan	35 289	60	1 147	0	Clusters of cases	0
Morocco	16 726	181	264	1	Clusters of cases	0
Sudan	10 527	0	668	0	Community transmission	2
Djibouti	5 003	10	56	0	Clusters of cases	0
Somalia	3 106	0	93	0	Sporadic cases	1
Lebanon	2 700	101	40	0	Clusters of cases	0
Libya	1 704	52	47	1	Clusters of cases	0
Yemen	1 580	24	441	2	Community transmission	0
Tunisia	1 336	9	50	0	Sporadic cases	0
Jordan	1 209	3	10	0	Clusters of cases	0
Syrian Arab Republic	496	19	25	3	Community transmission	0
Territoriesⁱⁱ						
occupied Palestinian territory	9 055	439	57	5	Clusters of cases	0
Europe						
Russian Federation	765 437	6 234	12 247	124	Clusters of cases	0
The United Kingdom	293 243	687	45 233	114	Community transmission	0
Spain	260 255	1 400	28 420	4	Clusters of cases	0
Italy	243 967	231	35 028	11	Community transmission	0
Turkey	217 799	926	5 458	18	Community transmission	0
Germany	201 372	529	9 083	1	Clusters of cases	0
France	164 247	697	30 046	14	Clusters of cases	0
Sweden	77 281	404	5 619	26	Community transmission	0
Kazakhstan	68 703	1 808	375	0	Clusters of cases	0

Reporting Country/Territory/Area	Total confirmed* cases	Total confirmed* new cases	Total deaths	Total new deaths	Transmission classification ¹	Days since last reported case
Belarus	65 782	159	491	6	Community transmission	0
Belgium	63 499	261	9 800	5	Community transmission	0
Ukraine	58 111	847	1 477	21	Community transmission	0
Netherlands	51 399	103	6 129	1	Community transmission	0
Portugal	48 077	312	1 682	3	Community transmission	0
Israel	46 444	1 946	386	7	Pending	0
Poland	39 407	353	1 612	7	Community transmission	0
Romania	35 802	799	1 988	17	Community transmission	0
Armenia	34 462	461	631	11	Community transmission	0
Switzerland	33 296	91	1 687	0	Community transmission	0
Azerbaijan	26 636	471	341	7	Clusters of cases	0
Ireland	25 730	32	1 752	3	Clusters of cases	0
Kyrgyzstan	24 984	11 883	923	751	Clusters of cases	0
Republic of Moldova	20 494	230	675	9	Community transmission	0
Serbia	20 109	392	452	10	Community transmission	0
Austria	19 406	138	711	0	Community transmission	0
Uzbekistan	15 896	547	80	4	Clusters of cases	0
Czechia	13 742	130	358	3	Clusters of cases	0
Denmark	13 173	49	611	1	Community transmission	0
Norway	9 015	4	255	1	Clusters of cases	0
North Macedonia	8 786	174	406	5	Clusters of cases	0
Bulgaria	8 442	298	297	4	Clusters of cases	0
Bosnia and Herzegovina	7 908	227	243	4	Community transmission	0
Finland	7 301	8	328	0	Clusters of cases	0

Reporting Country/Territory/Area	Total confirmed* cases	Total confirmed* new cases	Total deaths	Total new deaths	Transmission classification ⁱ	Days since last reported case
Tajikistan	6 786	45	56	0	Pending	0
Luxembourg	5 285	163	111	0	Community transmission	0
Hungary	4 293	14	595	0	Community transmission	0
Croatia	4 137	98	120	1	Clusters of cases	0
Greece	3 964	25	194	1	Clusters of cases	0
Albania	3 906	0	107	0	Clusters of cases	1
Estonia	2 020	4	69	0	Clusters of cases	0
Slovakia	1 965	14	28	0	Clusters of cases	0
Iceland	1 916	2	10	0	Community transmission	0
Slovenia	1 916	19	111	0	Clusters of cases	0
Lithuania	1 908	6	79	0	Community transmission	0
Montenegro	1 618	36	28	2	Clusters of cases	0
Latvia	1 185	6	31	0	Clusters of cases	0
Cyprus	1 031	0	19	0	Clusters of cases	1
Georgia	1 018	8	15	0	Sporadic cases	0
Andorra	880	3	52	0	Community transmission	0
San Marino	716	0	42	0	Community transmission	8
Malta	674	0	9	0	Sporadic cases	8
Monaco	99	0	1	0	Sporadic cases	41
Liechtenstein	86	1	1	0	Sporadic cases	0
Holy See	12	0	0	0	Sporadic cases	72
Territoriesⁱⁱ						
Kosovo ^[1]	5 410	81	114	6	Community transmission	0

Reporting Country/Territory/Area	Total confirmed* cases	Total confirmed* new cases	Total deaths	Total new deaths	Transmission classification ¹	Days since last reported case
Isle of Man	336	0	24	0	No cases	57
Jersey	331	2	31	0	Community transmission	0
Guernsey	252	0	13	0	Community transmission	76
Faroe Islands	188	0	0	0	Pending	10
Gibraltar	180	0	0	0	Clusters of cases	7
Greenland	13	0	0	0	No cases	50
South-East Asia						
India	1 038 716	34 884	26 273	671	Clusters of cases	0
Bangladesh	199 357	3 034	2 547	51	Community transmission	0
Indonesia	83 130	1 462	3 957	84	Community transmission	0
Nepal	17 445	101	40	1	Clusters of cases	0
Thailand	3 246	7	58	0	Clusters of cases	0
Maldives	2 913	14	15	0	Clusters of cases	0
Sri Lanka	2 697	10	11	0	Clusters of cases	0
Myanmar	339	0	6	0	Clusters of cases	1
Bhutan	87	1	0	0	Sporadic cases	0
Timor-Leste	24	0	0	0	No cases	85
Western Pacific						
China	85 857	82	4 652	1	Clusters of cases	0
Philippines	63 001	1 735	1 660	17	Community transmission	0
Singapore	47 454	327	27	0	Clusters of cases	0
Japan	24 132	659	985	0	Clusters of cases	0
Republic of Korea	13 711	39	294	1	Clusters of cases	0

Reporting Country/Territory/Area	Total confirmed* cases	Total confirmed* new cases	Total deaths	Total new deaths	Transmission classification ¹	Days since last reported case
Australia	11 235	425	116	3	Clusters of cases	0
Malaysia	8 755	18	122	0	Clusters of cases	0
New Zealand	1 200	1	22	0	Clusters of cases	0
Viet Nam	382	1	0	0	Clusters of cases	0
Mongolia	262	1	0	0	Sporadic cases	0
Cambodia	171	5	0	0	Sporadic cases	0
Brunei Darussalam	141	0	3	0	No cases	71
Fiji	26	0	0	0	Sporadic cases	6
Lao People's Democratic Republic	19	0	0	0	Sporadic cases	96
Papua New Guinea	15	0	0	0	Sporadic cases	1
Territoriesⁱⁱ						
Guam	306	0	5	0	Clusters of cases	2
French Polynesia	62	0	0	0	Sporadic cases	20
Northern Mariana Islands (Commonwealth of the)	37	0	2	0	Pending	1
New Caledonia	22	0	0	0	Sporadic cases	3
Subtotal for all regions	13 875 700	259 848	593 074	7 360		
Other [†]	741	0	13	0	Not applicable	-
Grand total	13 876 441	259 848	593 087	7 360		

****See [Annex 1](#) for data, table and figure notes.**

Technical guidance and other resources

- To view all technical guidance documents regarding COVID-19, please go to [this webpage](#).
- Updates from WHO regional offices
 - [WHO AFRO](#)
 - [WHO EMRO](#)
 - [WHO EURO](#)
 - [WHO PAHO](#)
 - [WHO SEARO](#)
 - [WHO WPRO](#)
- [Research and Development](#)
- [Online courses on COVID-19](#) and in [additional national languages](#)
- [The Strategic Preparedness and Response Plan](#) (SPRP) outlining the support the international community can provide to all countries to prepare and respond to the virus
- [WHO Coronavirus Disease \(COVID-19\) Dashboard](#)
- [Weekly COVID-19 Operations Updates](#)

Recommendations and advice for the public

- [Protect yourself](#)
- [Questions and answers](#)
- [Travel advice](#)
- [EPI-WIN](#): tailored information for individuals, organizations and communities

Case definitions

WHO periodically updates the [Global Surveillance for human infection with coronavirus disease \(COVID-19\)](#) document which includes surveillance definitions.

Definition of COVID-19 death

A COVID-19 death is defined for surveillance purposes as a death resulting from a clinically compatible illness in a probable or confirmed COVID-19 case, unless there is a clear alternative cause of death that cannot be related to COVID-19 disease (e.g. trauma). There should be no period of complete recovery between the illness and death.

Further guidance for certification and classification (coding) of COVID-19 as cause of death is available [here](#) and [here](#).

Annex 1: Data, table and figure notes

Caution must be taken when interpreting all data presented. Differences are to be expected between information products published by WHO, national public health authorities, and other sources using different inclusion criteria and different data cut-off times. While steps are taken to ensure accuracy and reliability, all data are subject to continuous verification and change. Case detection, definitions, testing strategies, reporting practice, and lag times differ between countries/territories/areas. These factors, amongst others, influence the counts presented, with variable underestimation of true case and death counts, and variable delays to reflecting these data at global level.

The designations employed, and the presentation of these materials do not imply the expression of any opinion whatsoever on the part of WHO concerning the legal status of any country, territory or area or of its authorities, or concerning the delimitation of its frontiers or boundaries. Dotted and dashed lines on maps represent approximate border lines for which there may not yet be full agreement. Countries, territories and areas are arranged under the administering WHO region.

The mention of specific companies or of certain manufacturers' products does not imply that they are endorsed or recommended by WHO in preference to others of a similar nature that are not mentioned. Errors and omissions excepted, the names of proprietary products are distinguished by initial capital letters.

^[1] All references to Kosovo should be understood to be in the context of the United Nations Security Council resolution 1244 (1999). In the map, number of cases of Serbia and Kosovo (UNSCR 1244, 1999) have been aggregated for visualization purposes.

*A small number of countries/territories/areas report combined probable and laboratory-confirmed cases; efforts are underway to identify these for notation in the data table.[†]Other: includes cases reported from international conveyances.

Due to the recent trend of countries conducting data reconciliation exercises which remove large numbers of cases or deaths from their total counts, WHO will now display such data as negative numbers in the "new cases" / "new deaths" columns as appropriate. This will aid readers in identifying when such adjustments occur. When additional details become available that allow the subtractions to be suitably apportioned to previous days, graphics will be updated accordingly. Prior situation reports will not be edited; see covid19.who.int for the most up-to-date data.

Additional table notes

ⁱ Transmission classification is based on a process of country/territory/area self-reporting. Classifications are reviewed on a weekly basis and may be revised as new information becomes available. Differing degrees of transmission may be present within

countries/territories/areas; classification is based on the highest category reported within a country/territory/area. Categories:

- No cases: with no confirmed cases;
- Sporadic cases: with one or more cases, imported or locally detected;
- Clusters of cases: experiencing cases, clustered in time, geographic location and/or by common exposures;
- Community transmission: experiencing larger outbreaks of local transmission defined through an assessment of factors including, but not limited to: large numbers of cases not linkable to transmission chains; large numbers of cases from sentinel lab surveillance; and/or multiple unrelated clusters in several areas of the country/territory/area;
- Pending: transmission classification has not been reported to WHO.

ii “Territories” include territories, areas, overseas dependencies and other jurisdictions of similar status.

Country, territory, or area-specific updates and errata

- **Update 18 July 2020, Kyrgyzstan:** Change in criteria for reporting COVID-19 cases to include confirmed and probable cases. Additional 11 883 cases and 751 deaths reported.