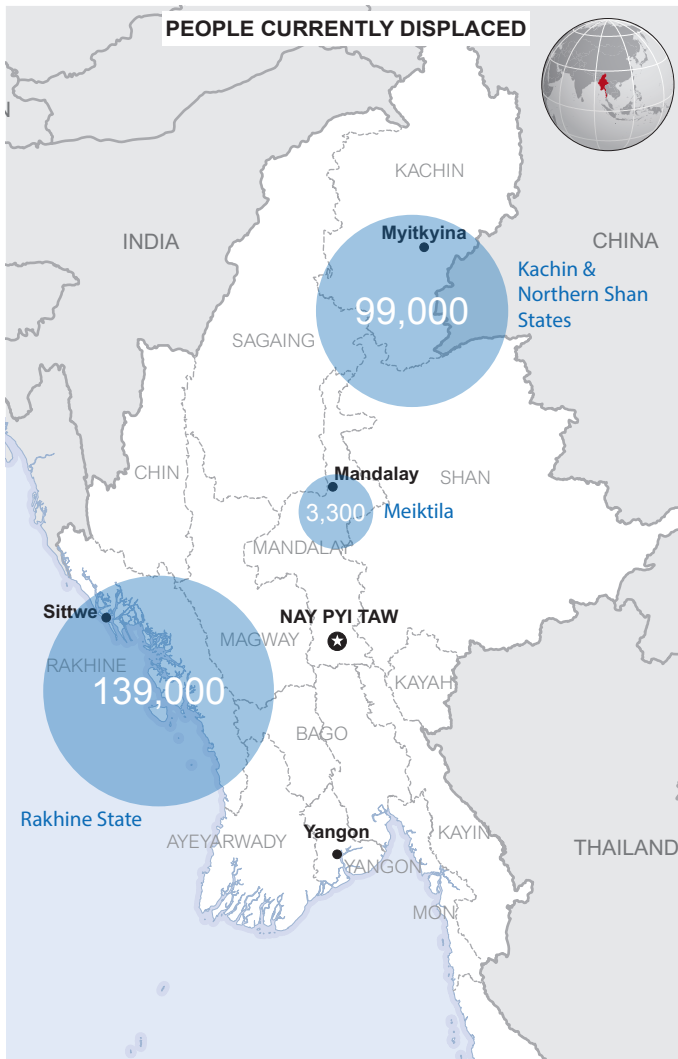
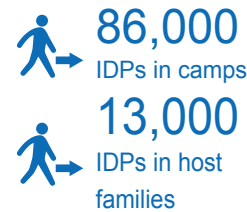


Since 2011, more than **247,000 people** in total have been displaced in Myanmar, primarily in Rakhine and Kachin states. In south eastern Myanmar, a large number of people remain displaced following many years of armed conflict. Emergency preparedness is a major challenge as Myanmar is one of the most disaster prone countries in the Asia-Pacific region.



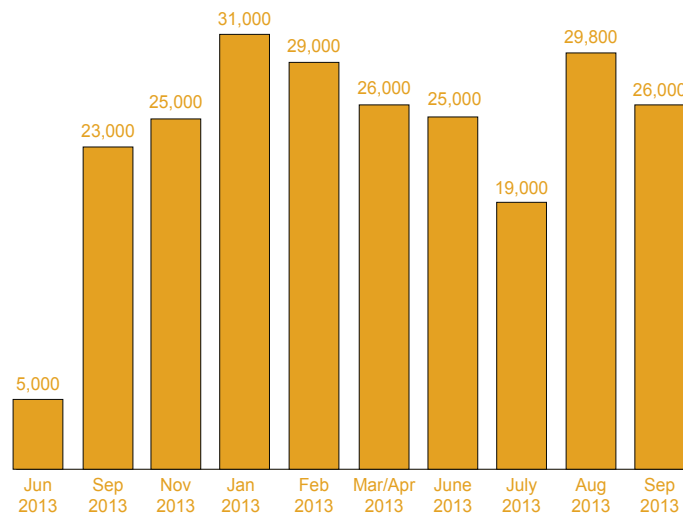
The boundaries and names shown and the designations used on this map do not imply official endorsement or acceptance by the United Nations.

KACHIN AND NORTHERN SHAN STATES

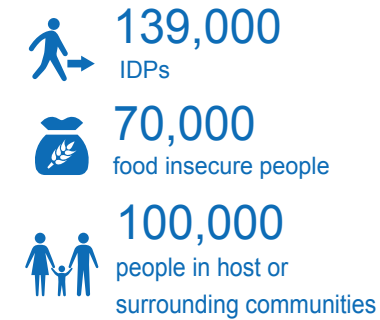


In Kachin and northern Shan States, close to **99,000 people** remain displaced as a result of the conflict that erupted in June 2011. Over 50 per cent of them are staying in areas beyond Government control where they receive assistance from local NGOs, with some support from international organizations that are able to travel to these areas for limited periods in convoys authorized by the Government. Most of the existing shelters for displaced people were provided in 2011 and no longer provide sufficient protection from the elements. Maintenance and repair work need to be scaled up to reduce the need for the reconstruction of shelters.

IDPS REACHED BY CROSS-LINE CONVOYS IN AREAS BEYOND GOVERNMENT CONTROL



RAKHINE STATE



October marked two years since the second outbreak of inter-communal violence in Rakhine State in 2012. Today one of the key needs in camps is maintenance and repairs of temporary shelters. Shelters were constructed for a short life-span and most now require improvements and regular maintenance. Displaced people and vulnerable communities also lack access to vital healthcare and other basic services.

MEIKTILA, MANDALAY REGION

3,300 IDPs in camps remain displaced following the inter-communal violence that broke out in March 2013. With winter approaching, mats, blankets and other essential items are needed.

STRATEGIC RESPONSE PLAN FUNDING 2014

In 2014, the United Nations and partners call for **\$192 million** to respond to humanitarian needs in Myanmar. Funding is needed to enable aid agencies to provide life-saving assistance to approximately **421,000 people** targeted by the plan. As of 31 October, the Humanitarian Appeal is 50 per cent funded.

