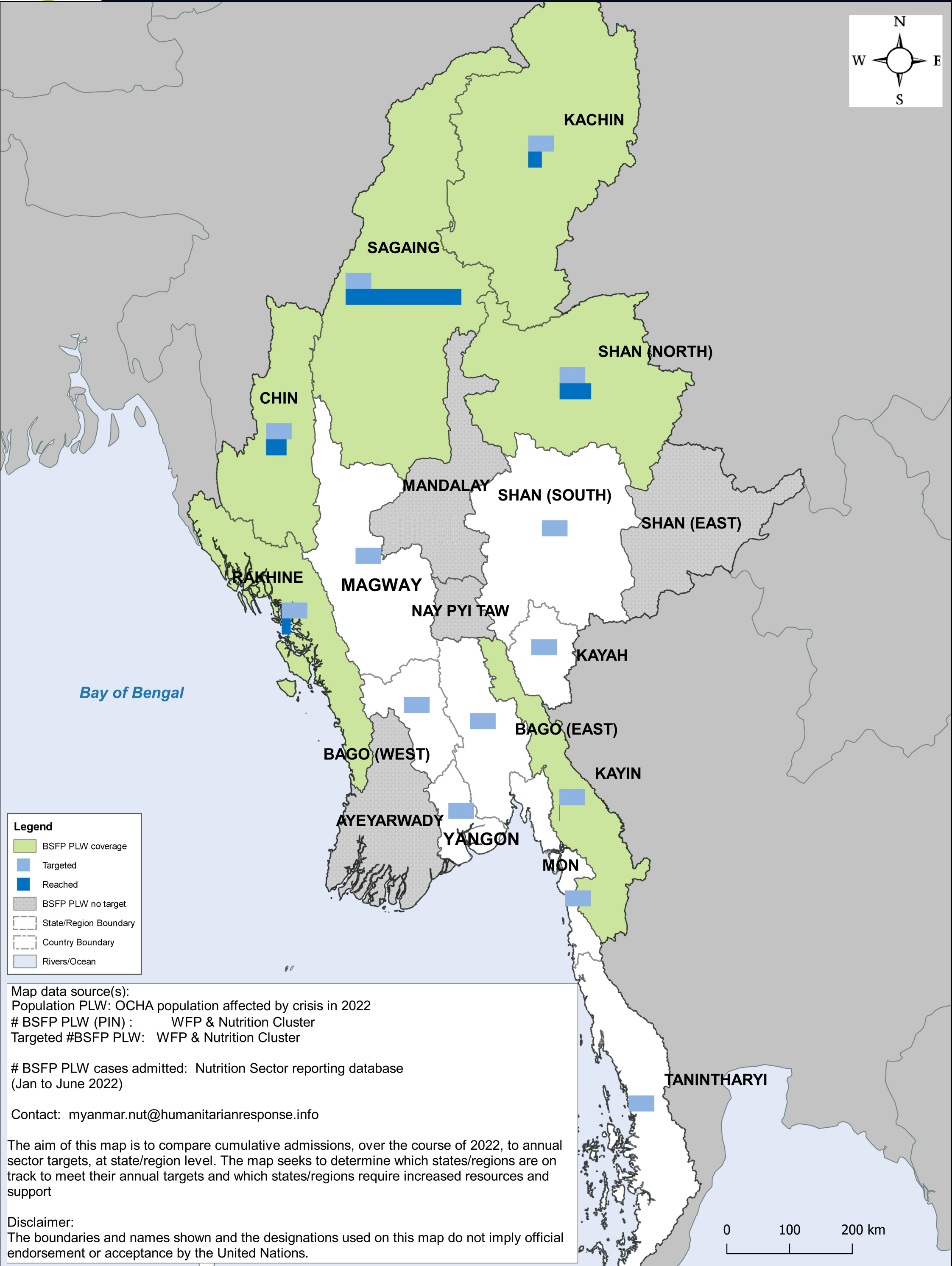
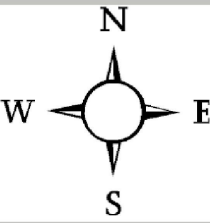




Progress towards annual BSFP PLW reached and targets by state/region, MYANMAR (January-June 2022)



Legend

- BSFP PLW coverage
- Targeted
- Reached
- BSFP PLW no target
- State/Region Boundary
- Country Boundary
- Rivers/Ocean

Map data source(s):
 Population PLW: OCHA population affected by crisis in 2022
 # BSFP PLW (PIN) : WFP & Nutrition Cluster
 Targeted #BSFP PLW: WFP & Nutrition Cluster

BSFP PLW cases admitted: Nutrition Sector reporting database
 (Jan to June 2022)

Contact: myanmar.nut@humanitarianresponse.info

The aim of this map is to compare cumulative admissions, over the course of 2022, to annual sector targets, at state/region level. The map seeks to determine which states/regions are on track to meet their annual targets and which states/regions require increased resources and support

Disclaimer:
 The boundaries and names shown and the designations used on this map do not imply official endorsement or acceptance by the United Nations.

