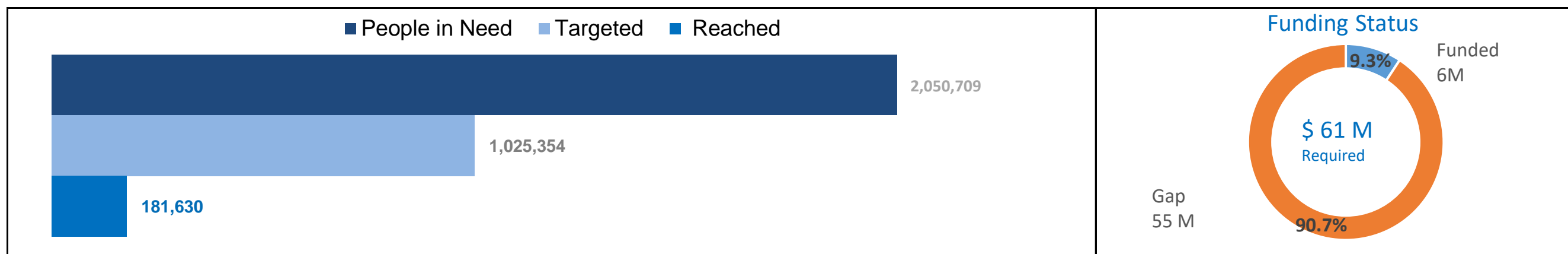




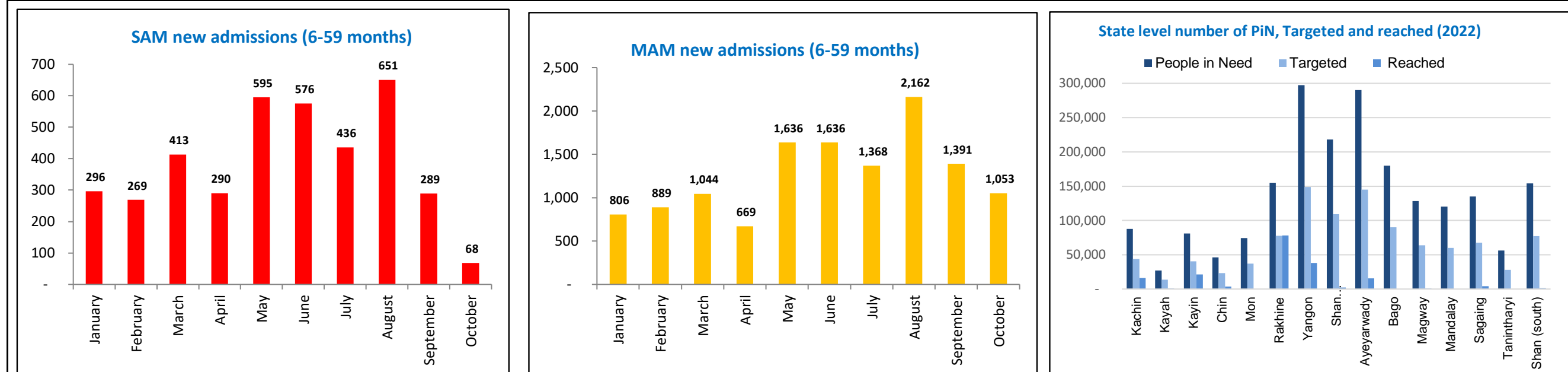
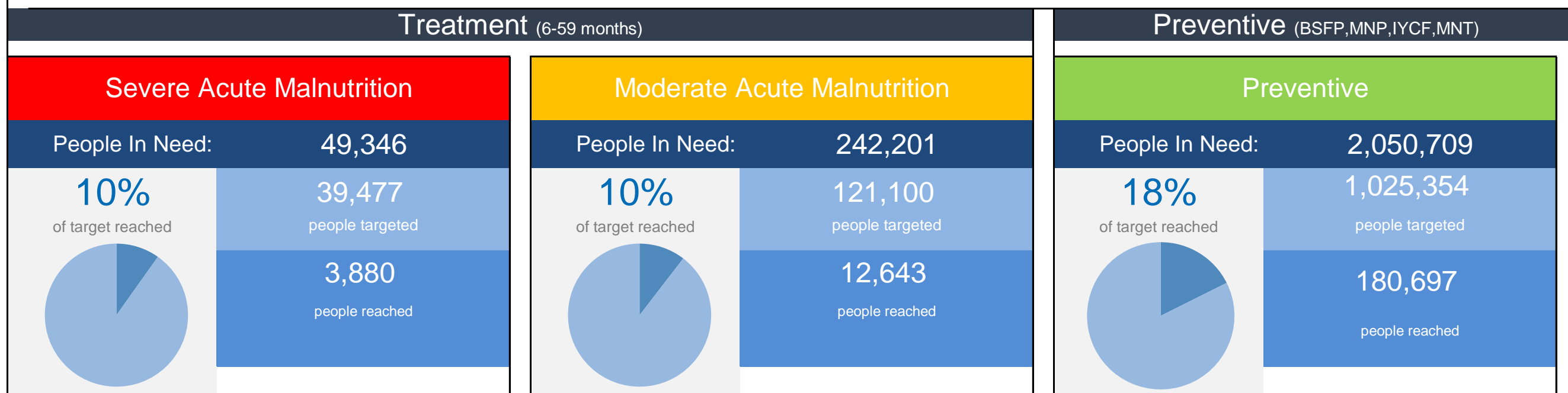
## CLUSTER OBJECTIVES

As per the HRP

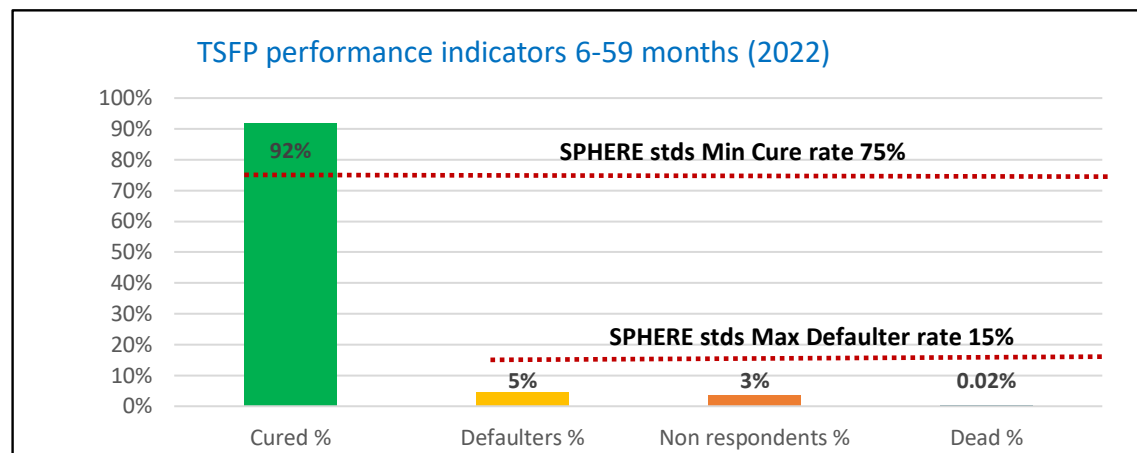
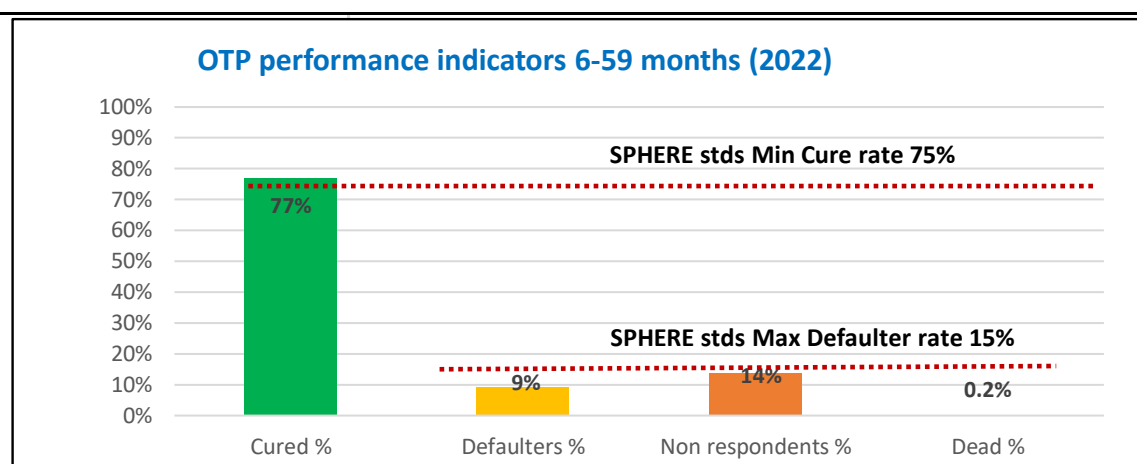
- 1 Specific Objective 1: Children and women with acute malnutrition access appropriate management services.
- 2 Specific objective 2: Nutritionally vulnerable children and women access preventivenutrition-specific services.



### Nutrition Response is Broken Down into Treatment and Preventive Response



MNT PLW Reached	42909	MNP 6-59 Reached	109160
MNT PLW Target	363835	MNP 6-59 Target	661519
Percentage to target	12%	Percentage to target	17%
BSFP PLW Reached	16880	BSFP 6-59 Reached	57594
BSFP PLW Target	70046	BSFP 6-59 Target	117155
Percentage to target	24%	Percentage to target	49%
IYCF PLW Reached	55854	TSFP PLW Reached	3255
IYCF PLW Target	363835	TSFP PLW Target	16217
Percentage to target	15%	Percentage to target	20%



Reporting Partners (33): ACF, CARE, CERA, CPI, ENDO, HDI, HKI, HPA, IPP, IRC, KBC, KMSS, MAM, MHA, MHDO, MM, MSF, Nyein, PCM, PHCD, PIN, PLAN, PSSAG, PUI, RI, SCI, SSSYCB, TDH, TSD, WCM, WFP, WHH, WPN, WV, UNICEF