



Lao DECIDE info
www.decide.la
Informing Decisions for Sustainable Development



SUZEEYAR 2016

MYANMAR SPATIAL DATA PLATFORM CONFERENCE

16 - 18 MAY 2016, NAY PYI TAW



Schweizerische Eidgenossenschaft
Confédération suisse
Confederazione Svizzera
Confederaziun svizra

Swiss Agency for Development
and Cooperation SDC

Lao Decide Information Platform

Dr Thatheva Saphangthong,
Director General Council for Science and Technology
Ministry of Agriculture and Forest
Lao PDR

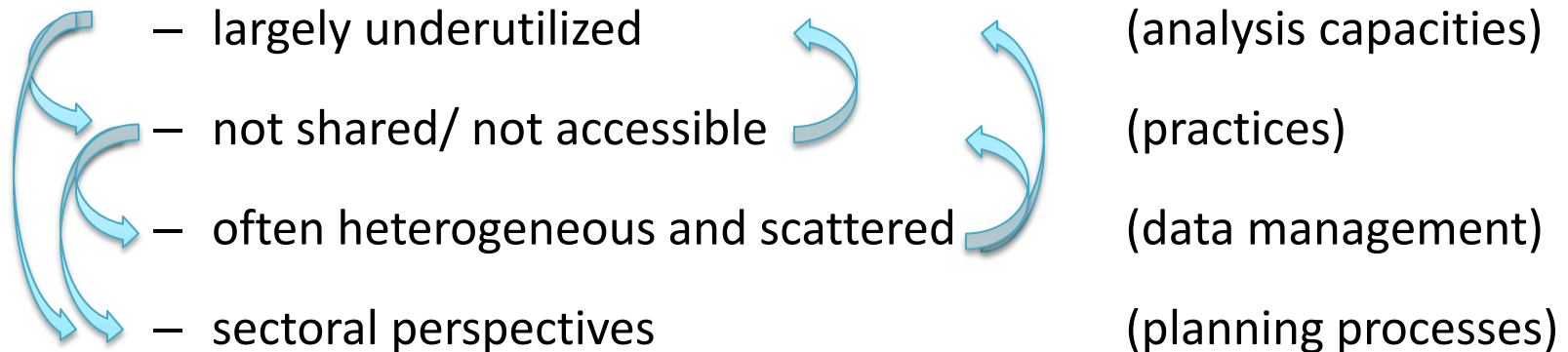
UNIVERSITÄT
BERN

CDE
CENTRE FOR DEVELOPMENT
AND ENVIRONMENT



Challenges

- Planning traditionally done based on ideal targets, less based on current facts, often due to “lack of information”.
- Information often exists, but



→ Challenges of information access and integration across sectors and levels



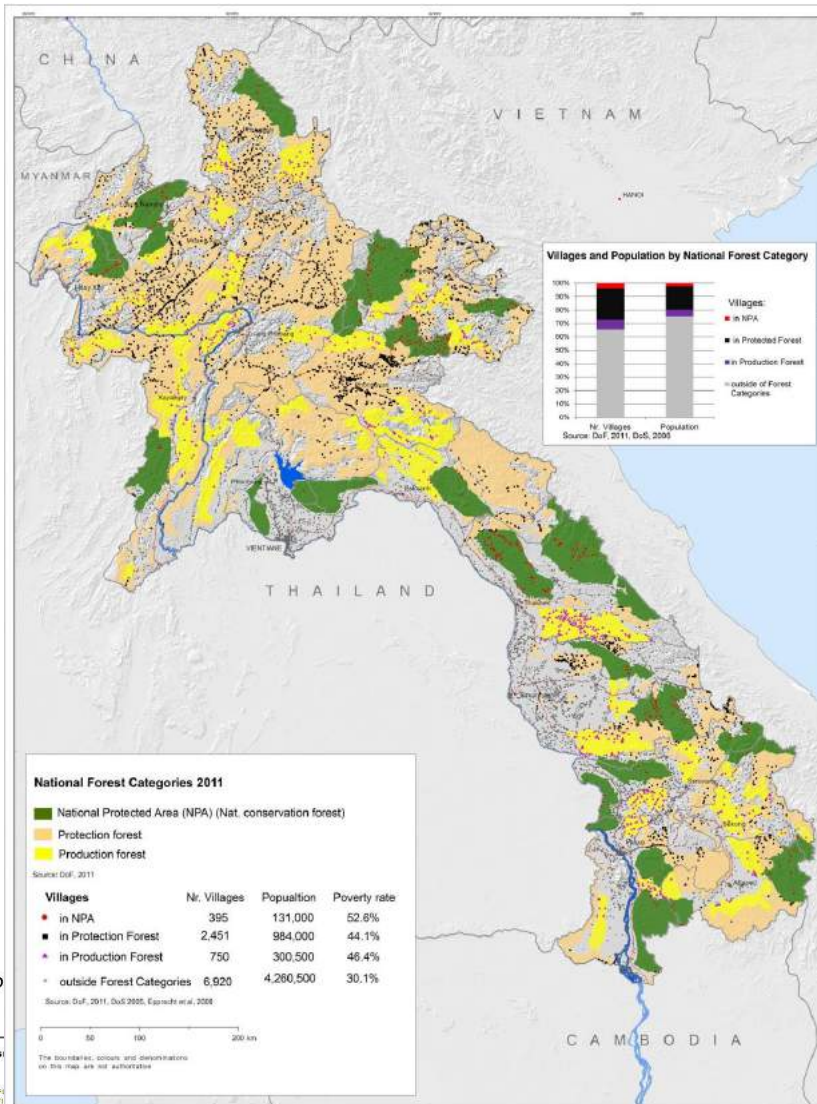
Information integration:

Limited exchange of
information across sectors

→ incoherent, sectorial
planning approaches

Example:

Linking DoF forest zones
to
socio-economic information

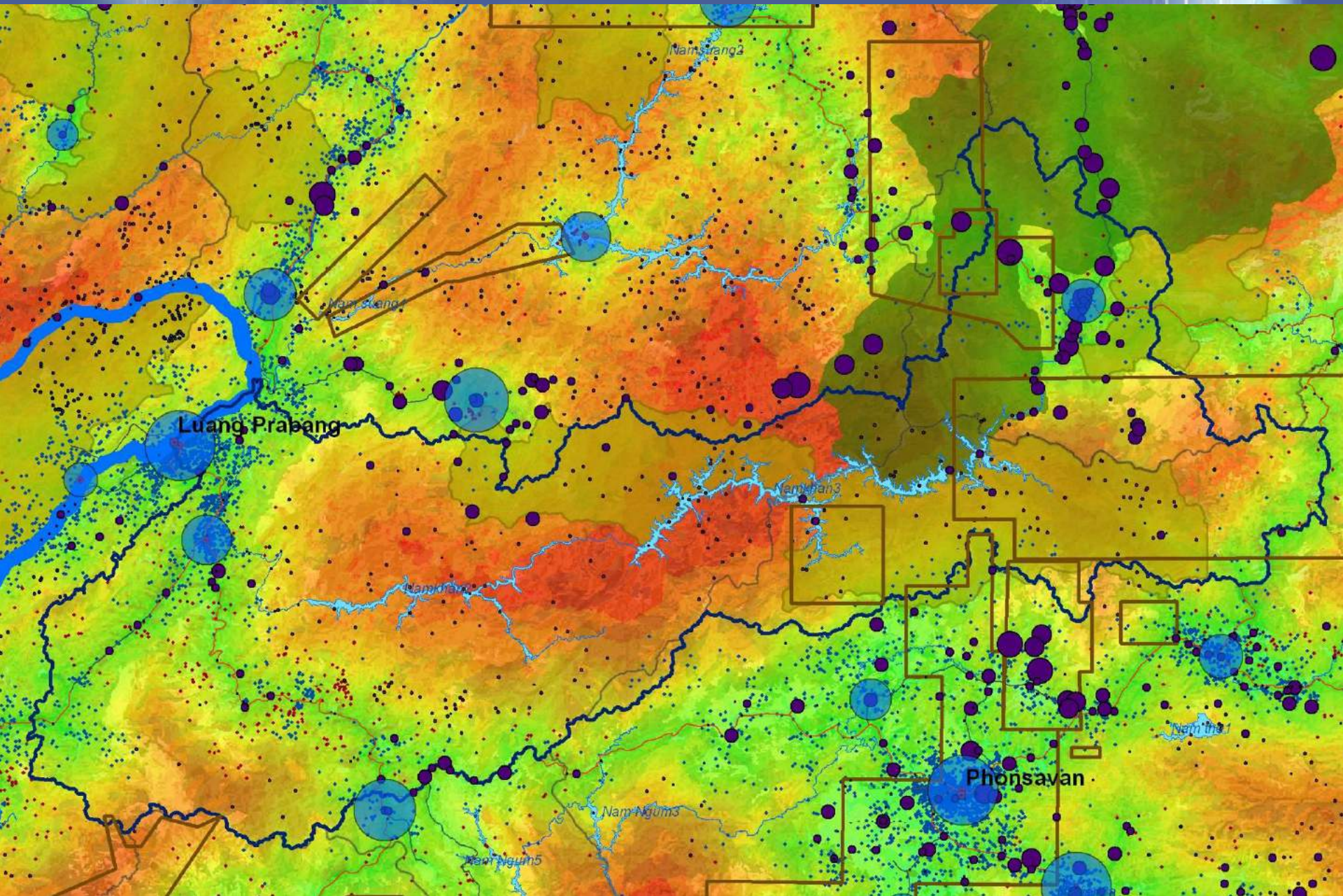




Lao DECIDE info

www.decide.la

Informing Decisions for Sustainable Development





Lao DECIDE info
www.decide.la
Informing Decisions for Sustainable Development



Schweizerische Eidgenossenschaft
Confédération suisse
Confederazione Svizzera
Confederaziun svizra

Swiss Agency for Development
and Cooperation SDC

The Lao DECIDE info Project

Fostering **information** integration, sharing, and analysis
for evidence-based, integrated **planning**
and
informed **decision-making**

u^b

u^b
UNIVERSITÄT
BERN

CDE
CENTRE FOR DEVELOPMENT
AND ENVIRONMENT



Aim of DECIDE

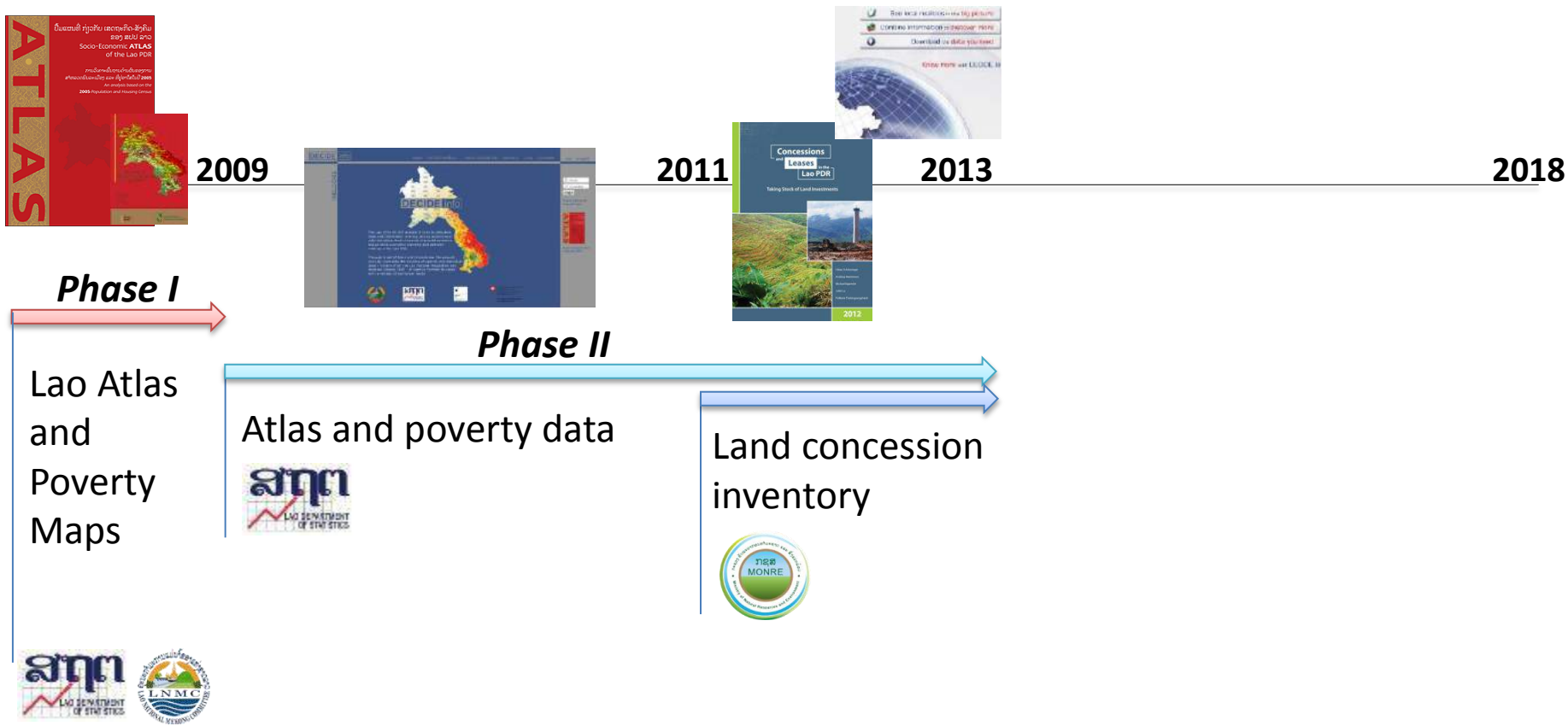
- To support evidence-informed, thematically integrated planning and decision-making in the GoL.

Objectives

- Promote and support the availing, **sharing**, and **integration** of existing **key data and information of the GoL from across sectors**.
- Support the development of **capacities** for information exchange, integration and analysis across thematic sectors in the GoL.
- Develop new **information and knowledge** for development planning.

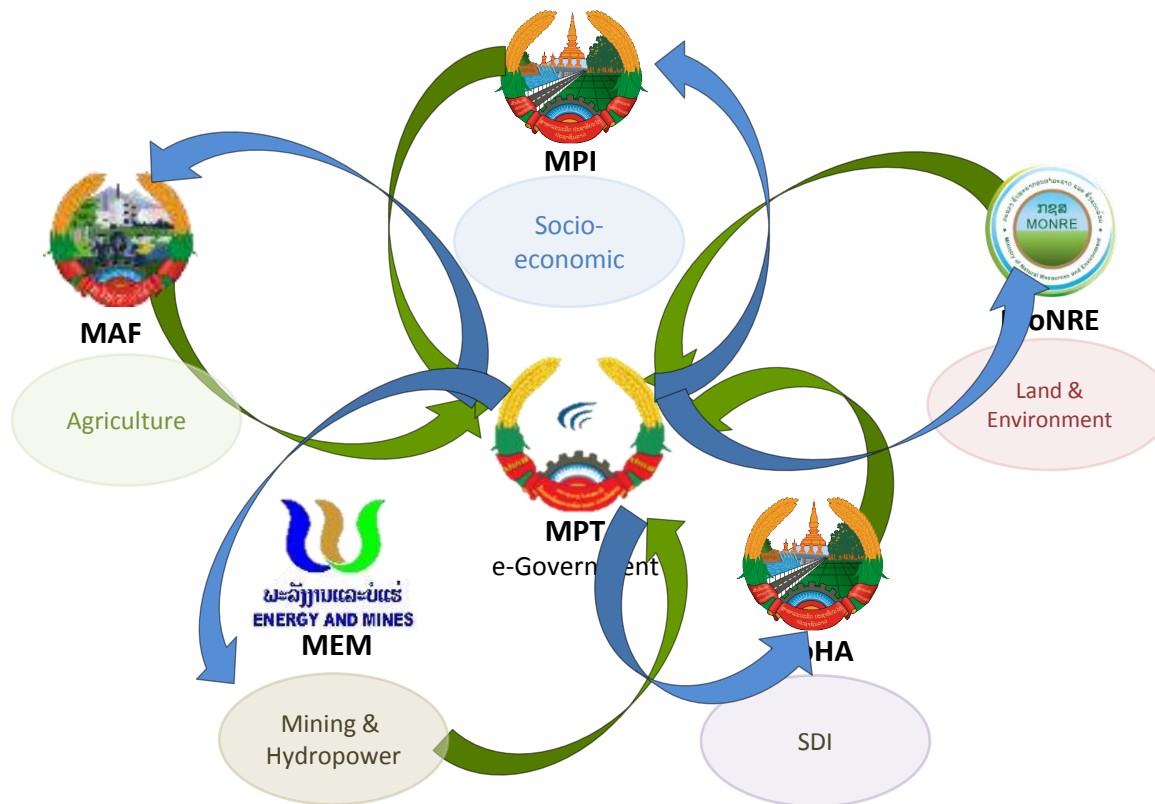


Project timeline





Cross-sectoral setup within the structures of the Government of the Lao PDR



 Schweizerische Eidgenossenschaft
Confédération suisse
Confederazione Svizzera
Confederaziun svizra

Swiss Agency for Development
and Cooperation SDC

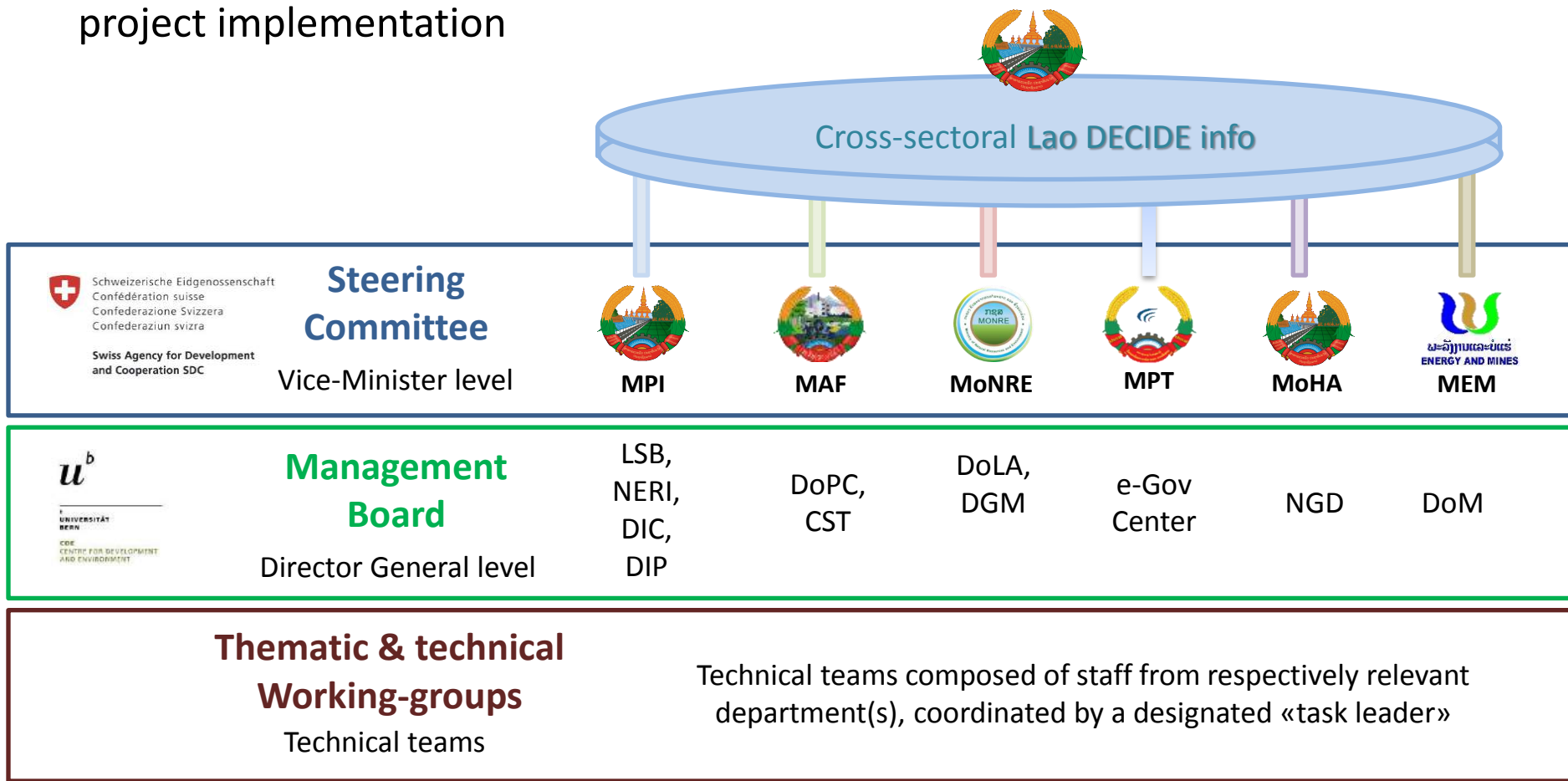

UNIVERSITÄT
BERN

CDE
CENTRE FOR DEVELOPMENT
AND ENVIRONMENT



Cross-sectoral Lao DECIDE info

Strategic steering,
 cross-sectoral management and coordination, and
 project implementation





Start

About

Partners

Data

Home

ຍິນດີຕ້ອນຮັບ

Welcome

The  Lao DECIDE info
 is a platform of the Government of the Lao PDR
 which integrates key information
 from the social, economic,
 environmental, and agricultural sectors
 to facilitate informed planning and decision-making.



See local realities in the **big picture**



Combine information to **discover more**



Download the **data you need**

NEWS

Launching Ceremony
 of the new cross-sectoral
 Lao DECIDE info platform



Toolbox



DOWNLOADS

Know more with DECIDE.la



**Web
Platform**



Lao DECIDE info GIS

Toolbox ▾ Tutorials Downloads ▾

Print Query Builder Attribute Table Download Select Freehand Select Unselect Zoom Selection

Zoom to village:

Selected Layers

Layer opacity:

- Community facilities: permanent m...
- Projects by European Commission
- Projects by SDC
- Incidence of poverty

Catalog

- Projects by World Vision
- Projects by WWF
- Projects by sector
- Agricultural Census 2011
 - Villages
 - Districts
 - Provinces
- Demography
- Agriculture general
- Agriculture crops
- Agriculture livestock
- Communal infrastructure and services
 - Community facilities: permanent market
 - Seasons that the road is accessible (dry, all year)

100 km
50 mi

Data © Department of Statistics, Data © Ministry of Agriculture and Forestry

www.decide.la/en/gis#

Information integration tools



Scientific resources

Lao DECIDE info
www.decide.la
Informing Decisions for Sustainable Development

1
LAO PDR
March 2010

Research Evidence

Targeting poverty in the Lao PDR

Lao DECIDE info
www.decide.la
Informing Decisions for Sustainable Development

2
LAO PDR
October 2010

Research Evidence

Land cover change in the Lao PDR

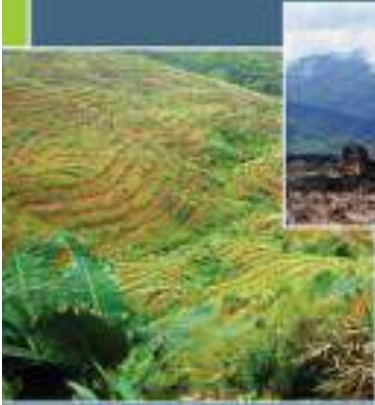
Lao DECIDE info
www.decide.la
Informing Decisions for Sustainable Development

3
LAO PDR
March 2011

Research for Science and Policy

Concessions and Leases in the Lao PDR

Taking Stock of Land Investments



Reaching the most vulnerable approaches in the Lao PDR

Double impact economic and environmental effects have been observed in a number of provinces with the target of reaching the most vulnerable approaches in the Lao PDR. This includes the impact of double impact economic and environmental effects have been observed in a number of provinces with the target of reaching the most vulnerable approaches in the Lao PDR.



Creating Spaces to Improve Science-Policy Exchange in the Lao PDR

Highly effective Science-Policy Exchange Forum held at the Sectoral Policy level, 23-24 February 2010, Vientiane, Lao PDR

Creating Spaces to Improve Science-Policy Exchange in the Lao PDR

Highly effective Science-Policy Exchange Forum held at the Sectoral Policy level, 23-24 February 2010, Vientiane, Lao PDR

In Lao PDR, efforts are underway to foster exchange between scientists and policymakers. In this context, the Science-Policy Exchange Forum held on 23-24 February 2010 in Vientiane. The purpose of the event was to create a space for dialogue between the sciences and policy-making in different thematic fields at the country level. The event was held in Vientiane, Lao PDR, and the Sectoral Policy level. The event was held in Vientiane, Lao PDR, and the Sectoral Policy level.

Lao DECIDE info
www.decide.la
ຂໍ້ມູນລັດຖະການສື່ສານແບບປັນຍັງ
ຊຸມຊົນເອກະຊົນຂໍ້ມູນການນໍາໃຊ້

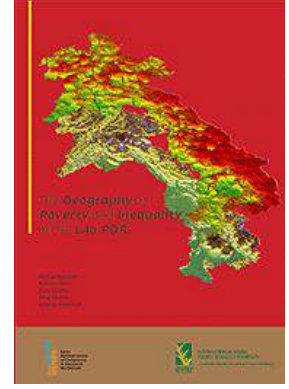
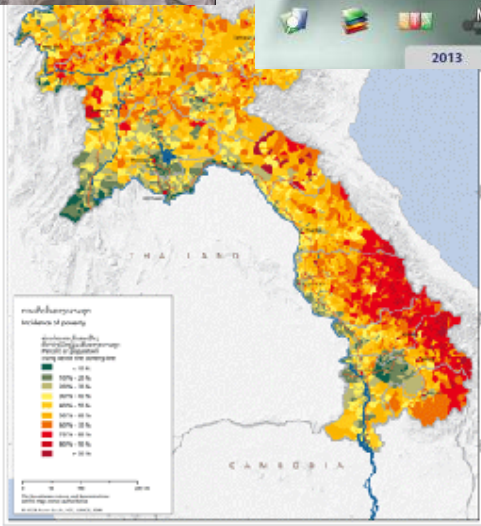
ເວັບໄຊ Lao DECIDE info

2013

Socio-economic

ການວິນິດໄສຊຸມຊົນຕົ້ນເມັດຂອງການສຳລາດຄົນລາວເມັດ ແລະ ສີ່ຢ່າງໃນປີ 2005

An analysis based on the 2005 Population and Housing Census





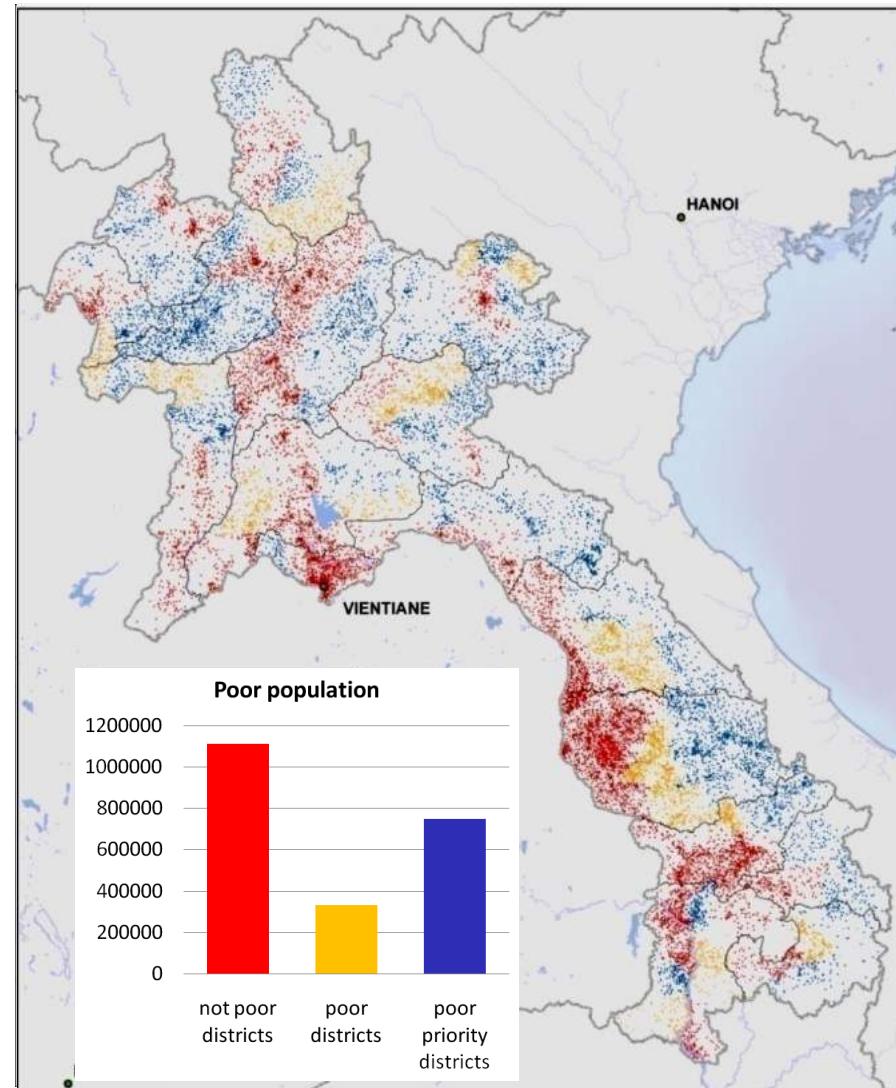
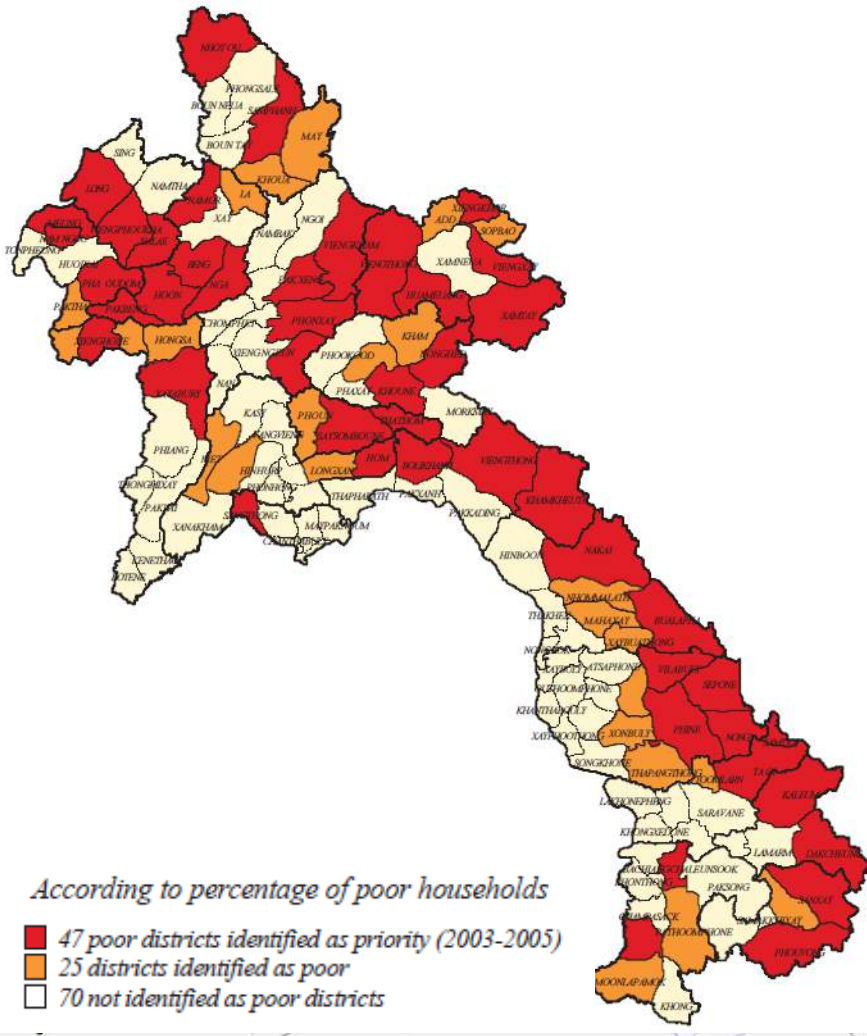
Key thematic focus

Thematic blocks	Institutions
Poverty and inequality, s-e disparities Population and Housing Census, LECS	MPI: LSB, NERI MoHA: NGD
Large-scale commercial investments in land & quality of investments National inventory and assessment	MAF: DoP & CST MoNRE: NREIC, DoLA, DGM MPI: IPD, NERI MEM: DoM MPT: e-Government Center
Agricultural transition, diversification, market integration Agricultural Census 1999 & 2011	MAF: DoP & CST MPI: LSB, NERI
Foreign aid investments AMP etc	MPI: DIC MAF: DoP MoNRE
National GIS data	MoHA: NGD



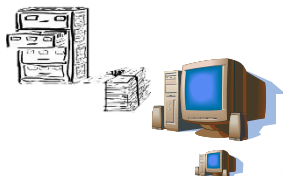
Information integration

LAO PDR: 72 DISTRICTS IDENTIFIED AS POOR





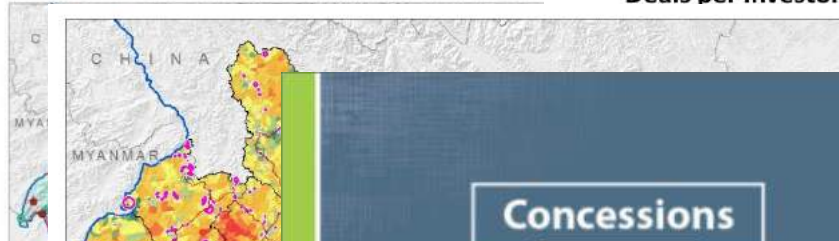
Example contextualization of land investments



- Inventory
- Geo-referencing
- Harmonizing and integrating
- Contextualization
- ik4d

Deals per Investor Type

5%



2013 44

u^b

CDE POLICY BRIEF

UNIVERSITÄT
BERN
CDE
CENTRE FOR DEVELOPMENT
AND ENVIRONMENT



On the right path? Land concessions in Laos

Land investment is booming in Laos, driven especially by demand for natural resources among its rapidly developing neighbours. Yet Laos remains one of the poorest countries in Southeast Asia, with more than 33% of the population living on less than \$1.25 per day (2005).

Concessions
and Leases in the
Lao PDR

Taking Stock of Land Investments



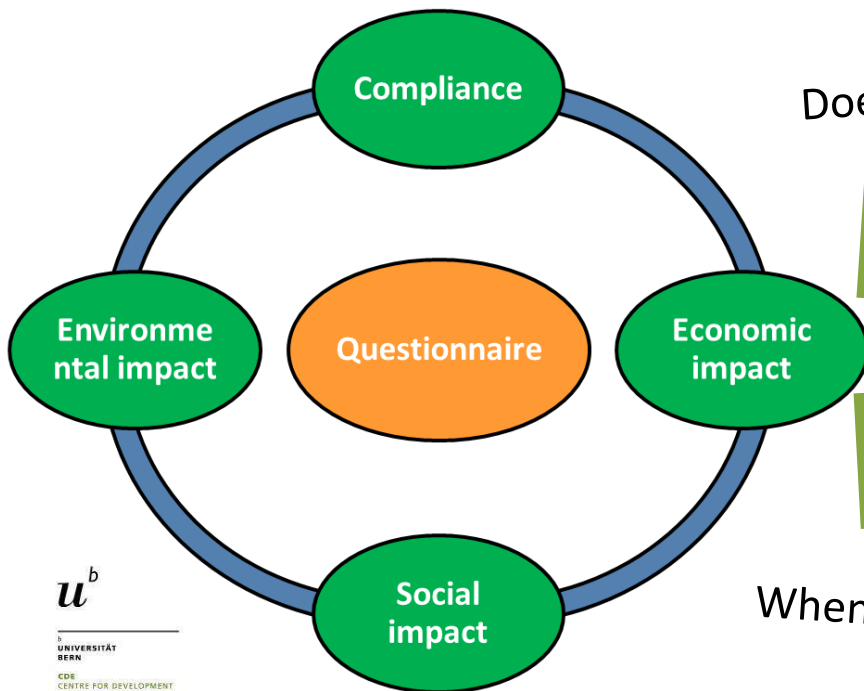
Oliver Schönweger
Andreas Heinemann
Michael Epprecht
Juliet Lu
Palkone Thalongsechanh

2012



Assessment of aspects of investment quality

- > Structured, closed-ended questionnaires conducted with government, company, and village stakeholders
- > Mobile device based data collection



Does village have a copy of contract?

All in all more than 700 questions

How many villagers working with company?

What are the positive impacts of the concession on local communities?

Has company performed any potentially dangerous tasks to the workers?

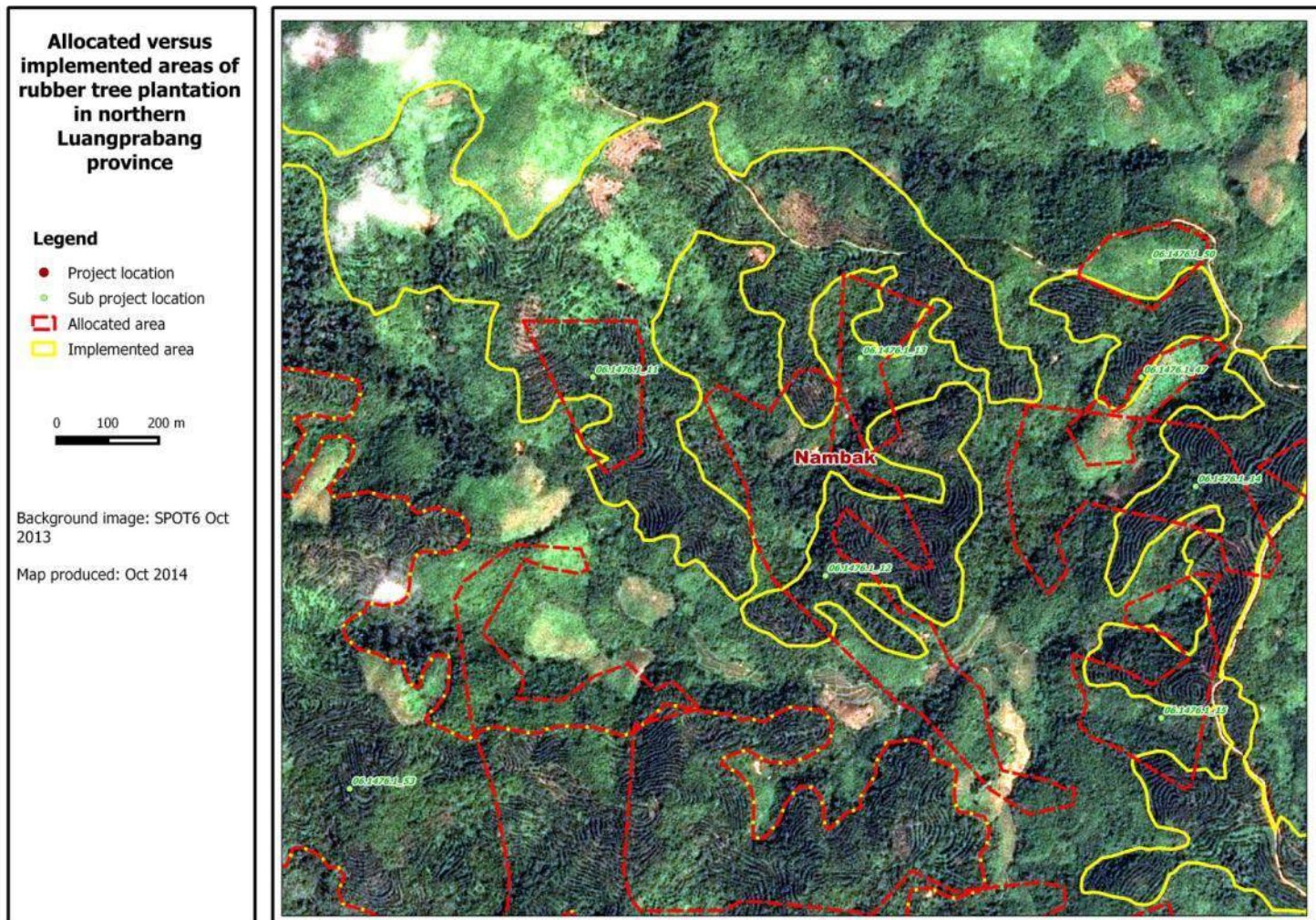
What are the negative impacts of the concession on local communities?

What measures are applied in the plantation?

When did land use planning occur in your village



Allocated vs. implemented areas





Broad partner base **Preconditions**

Equal representation at high level

shared and meaningful ownership

sufficient incentives and visibility for each stakeholder

Increasing interest of GoL

Directive from very top **Opportunities**

Working progressively on sensitive issues *with* the GoL

Long-term relationships and trust-based networks

Challenges Multi-institutional setup new to GoL

Many stakeholders (national and international)

No existing obvious champion in Laos



Approach of DECIDE

Fostering a data and information exchange culture across sectors

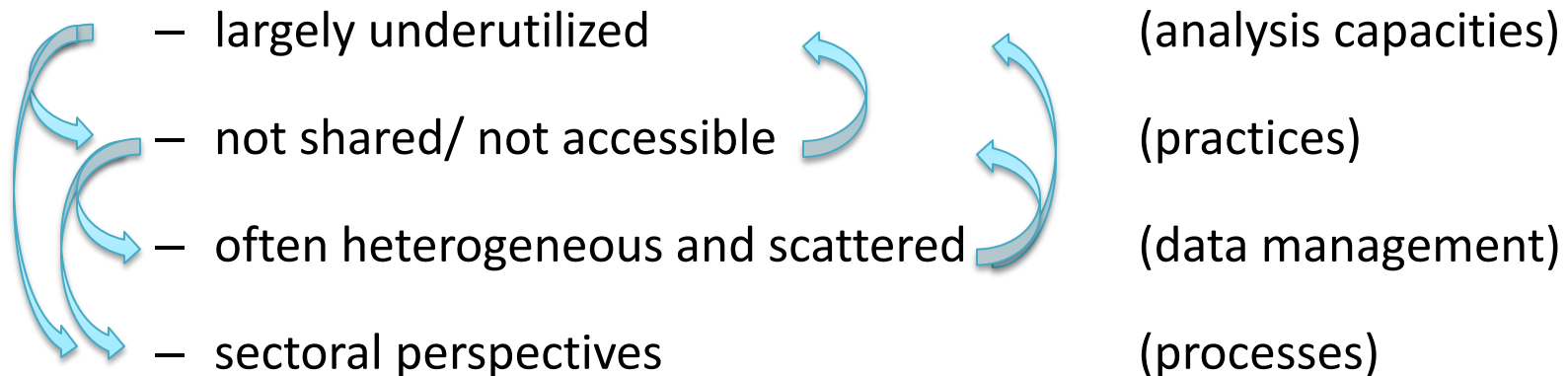
- a long term commitment, in multiple steps, over several years.

→ Time and effort needed

- to develop the necessary **trust basis**,
- to develop the **understanding for the value & benefits** of data and information sharing across thematic sectors,
- to **support processes, capacities, and technical environment** to initiate significant changes in attitudes towards information handling, usage and sharing in multiple ministries.



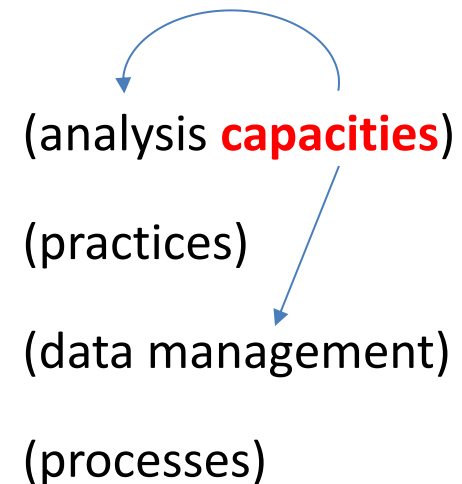
- Information often exists, but





- Information often exists, but

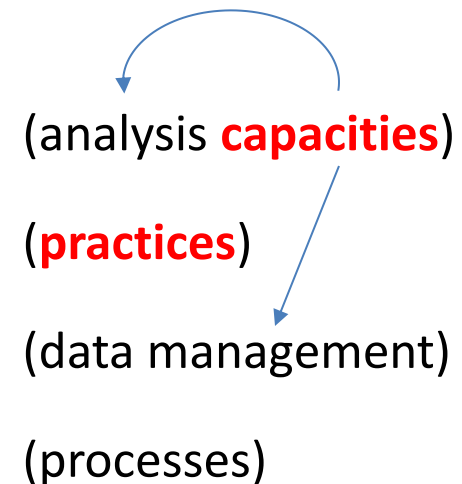
- largely underutilized
 - not shared/ not accessible
 - often heterogeneous and scattered
 - sectoral perspectives
-





- Information often exists, but

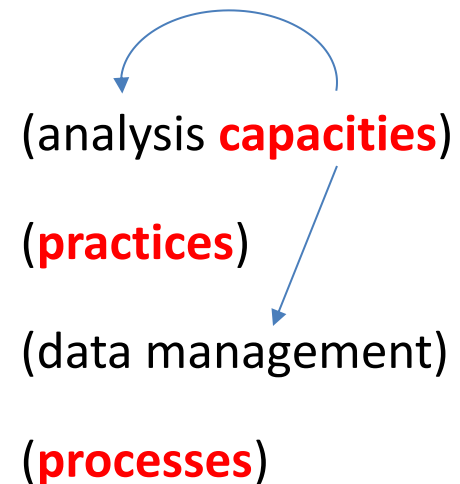
- largely underutilized
 - not shared/ not accessible
 - often heterogeneous and scattered
 - sectoral perspectives
-





- Information often exists, but

- largely underutilized
 - not shared/ not accessible
 - often heterogeneous and scattered
 - sectoral perspectives
-





Lao DECIDE info
www.decide.la
Informing Decisions for Sustainable Development

www.decide.la

u^b

UNIVERSITÄT
BERN

CDE
CENTRE FOR DEVELOPMENT
AND ENVIRONMENT