

Myanmar Water Information System for Data Management (WISDM)

Dr Robyn Johnston IWMI
Dr Khin NiNi Thein, AIRBMP
Tarek Ketelsen, AIRBMP



AIRBMP

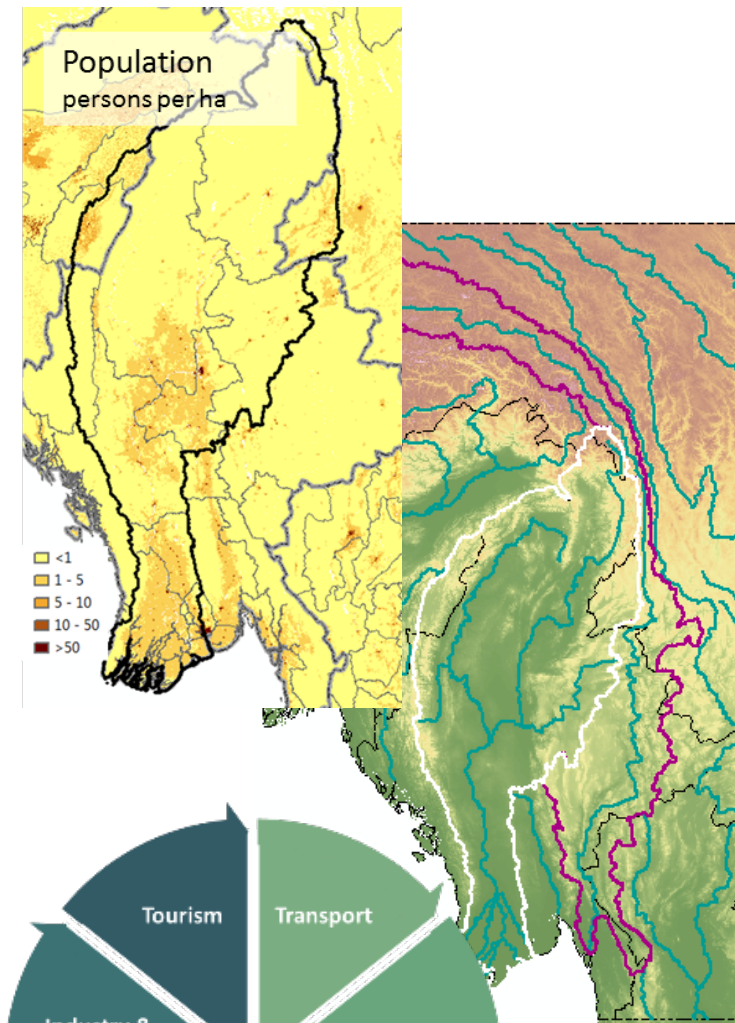
AYEYARWADY INTEGRATED RIVER BASIN MANAGEMENT PROGRAM

State of Basin report

Basin development master plan

- Biophysical and socio-economic data to describe the basin
- Multi-sectoral information for planning and management

Hydro-informatics Centre will
come online after SoB and BDMP



Myanmar WISDM

NATIONAL WATER RESOURCES COMMITTEE

MYANMAR WATER INFORMATION SYSTEM

HOME

DATASET

DOCUMENT HUB

PARTNERS

MAPPING PORTAL



Welcome to Myanmar Water Information System for Data Management



Welcome to Myanmar Water Information System for Data Management

The Myanmar WISDM is being developed by the International Water Management Institute (IWMI) under the auspices of the Myanmar National Water Resources Committee (NWRC). The data portal will provide access to a wide range of spatial data and other information relevant to water resources management in Myanmar.

Myanmar WISDM will include

- Database of water-related, spatial & non-spatial, datasets, including time series data
- An online visualization/mapping tool to view and query data
- Facilities for partner organizations to upload and download datasets (subject to permission of the owner of the data)
- Knowledgebase repository for easy access to relevant literature.

Search Database

Search

User Login

WISDM - Data portal

- **Database** of water-related, spatial & non-spatial, datasets, including time series data
- Facilities for **partner organizations** to upload and download datasets (subject to permission of the owner of the data)
- An online visualization / **mapping tool** to view and query data
- Knowledge base (**document hub**) for easy access to relevant literature.

- NWRC is owner and custodian
- IWMI provides technical support to construct and maintain
- WISDM will merge into HIC when it comes online

WISDM - Partners

- **National partners** coordinated through NWRC
 - links to OneMap and MIMU
- **International partners**
 - eg IWMI, ICEM, TU Delft, WWF, TNC

NATIONAL WATER RESOURCES COMMITTEE

MYANMAR WATER INFORMATION SYSTEM

HOME

DATASET

DOCUMENT HUB

PARTNERS

MAPPING PORTAL

Partners



Potential partners

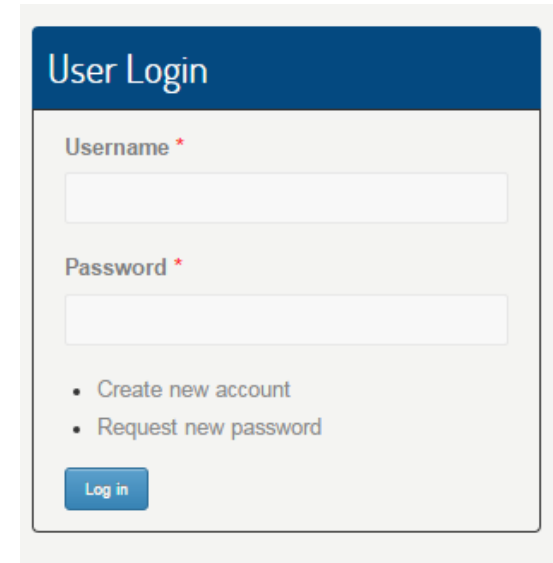


MYANMAR
INSTITUTE
FOR INTEGRATED
DEVELOPMENT
www.miid.org



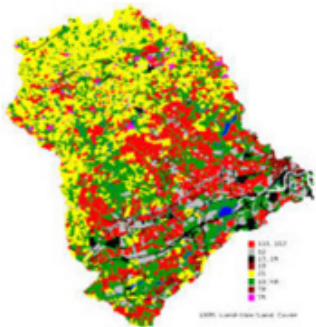
WISDM - Datasets

- Partners provide data listing and metadata
- Access conditions for each dataset are set by owner
 - different levels of access are possible for different users
 - password protected

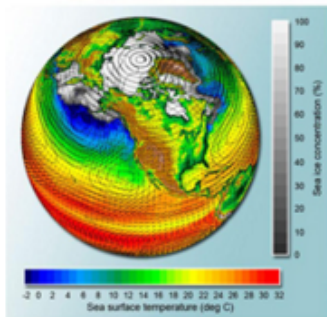


A screenshot of a 'User Login' form. The form has a dark blue header with the text 'User Login' in white. Below the header, there are two input fields: 'Username *' and 'Password *'. Below the password field, there are two links: 'Create new account' and 'Request new password'. At the bottom of the form is a blue button labeled 'Log in'.

Dataset Categories



Geology / soils



Climate



Hydropower and energy



Navigation and transport



Agriculture

WISDM - Mapping and visualisation

NATIONAL WATER RESOURCES COMMITTEE

MYANMAR WATER INFORMATION SYSTEM FOR DATA MANAGEMENT

HOME

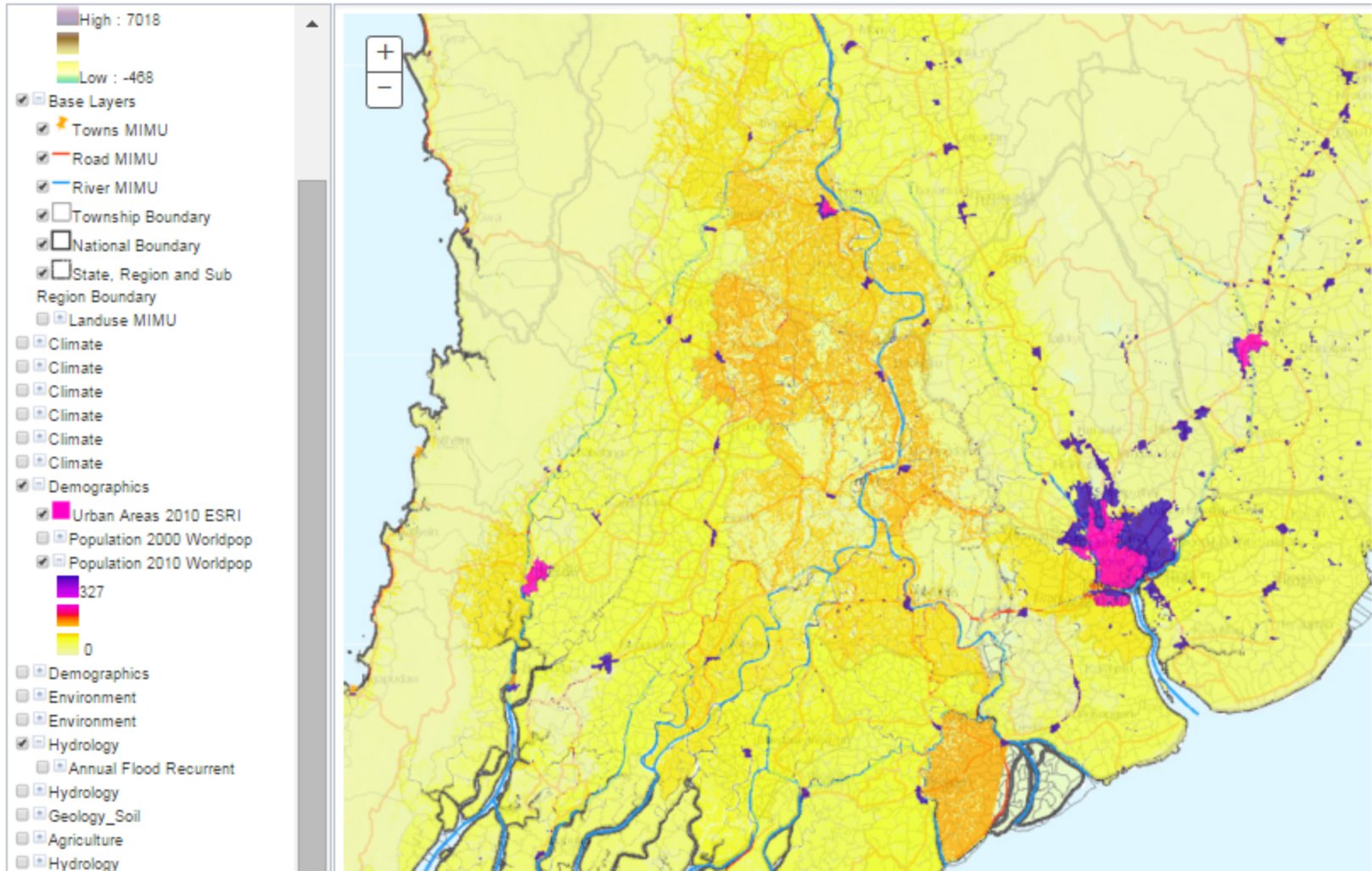
DATASET

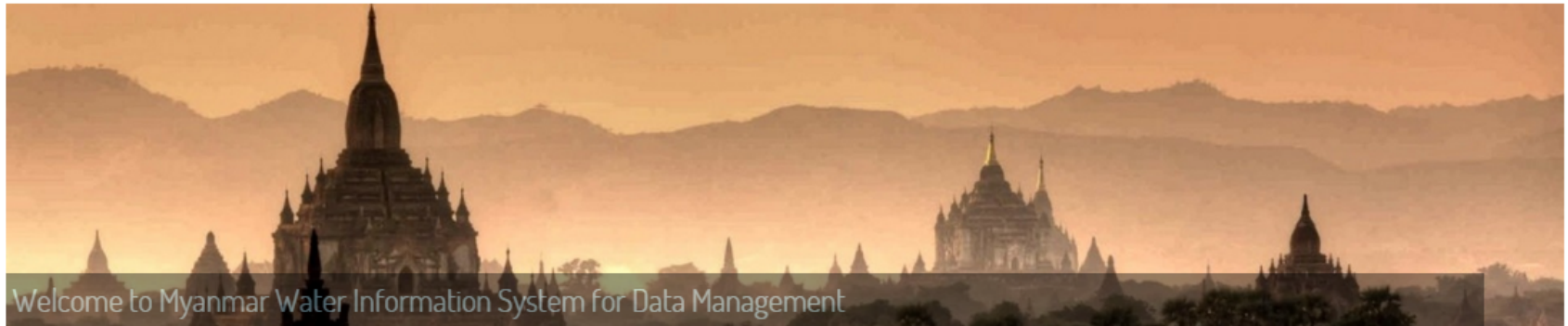
DOCUMENT HUB

PARTNERS

MAPPING PORTAL

Mapping Portal





Please join us as a WISDM partner

Dr Robyn Johnston r.johnston@cgiar.org

Prof.Dr. KhinNiNiThein aiweb.lead@gmail.com