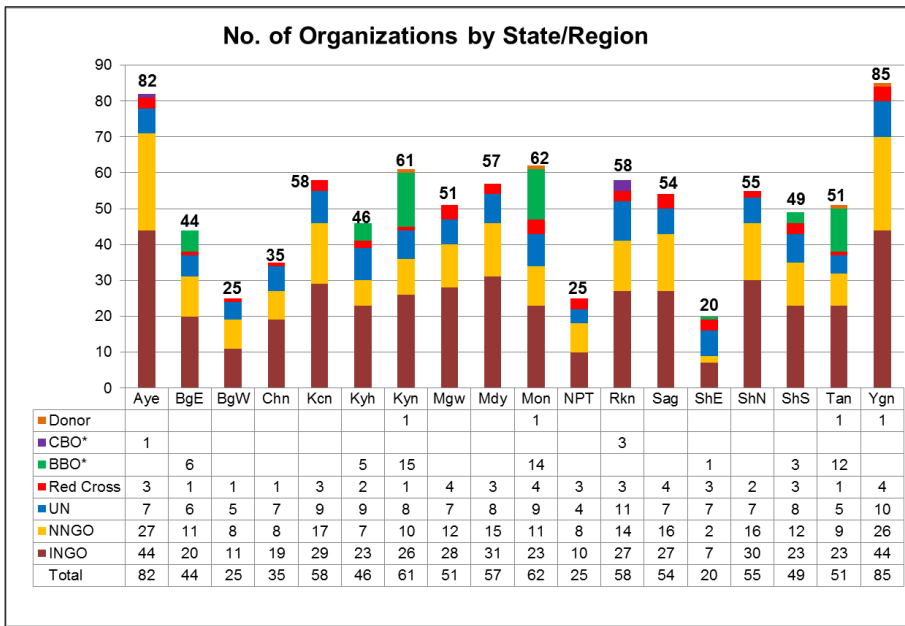


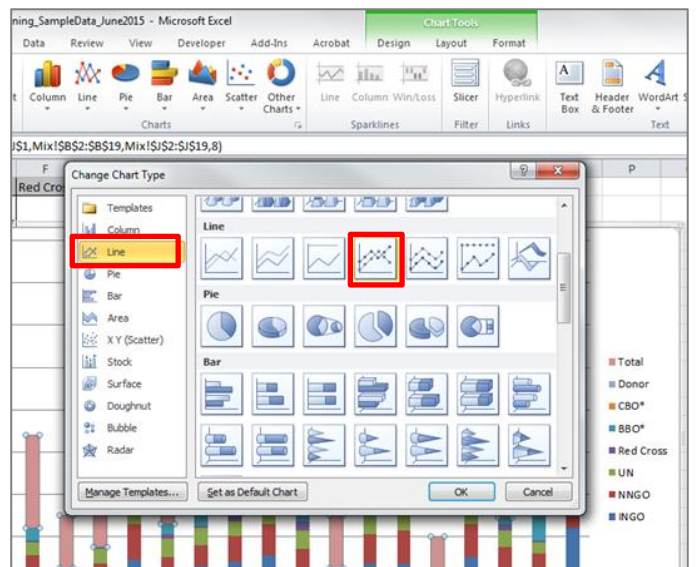
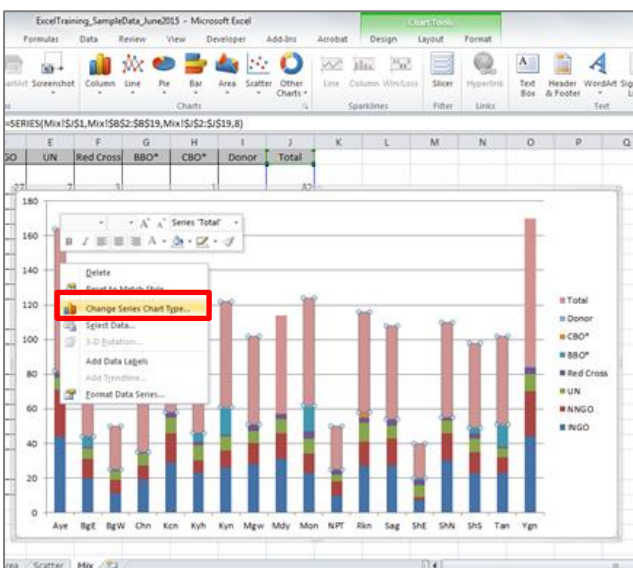
Column and Line Chart

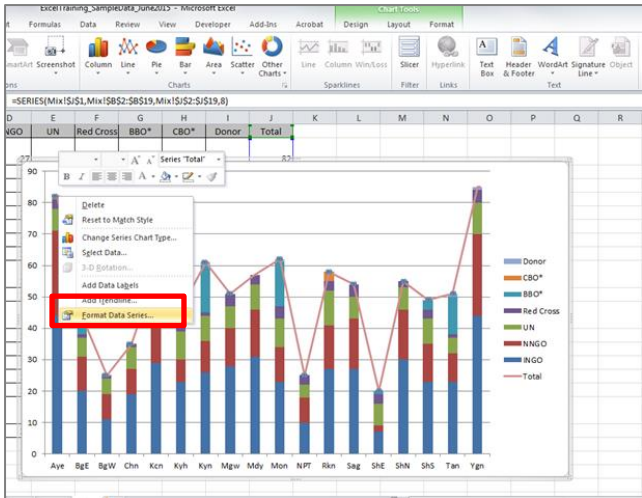


စုစုပေါင်းတန်ဖိုးကို
တိုင်တစ်ခုချင်းစီ အပေါ်တွင်
မြင်လိုသောကြောင့်
ဤနည်းဖြင့် Chart ကို
ဆွဲခြင်းဖြစ်ပါသည်။

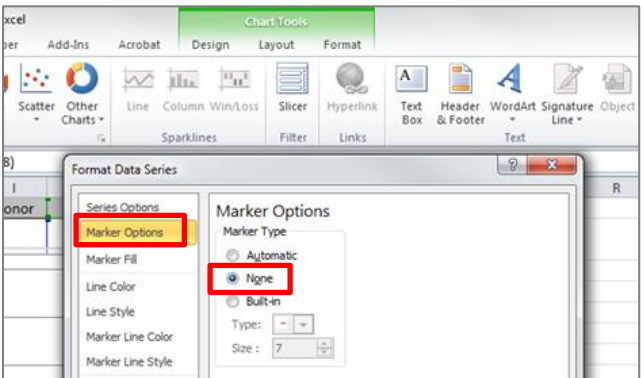
How to do

1. Open the sample data file: “Distance_Learning_Excel2010-2016_Column_and_line_Chart_Version1_18Jun2019_SampleData.xlsx”, and then go to “Column&Line” sheet
2. Select the dataset and Click – Insert -> Charts -> Column -> 2D Column -> Stacked Column
3. Change Series Chart Type
 - Click on the “Total” data bar and then “Right Click”
 - Click “Change Series Chart Type”
 - Click – Line -> Lines with markers

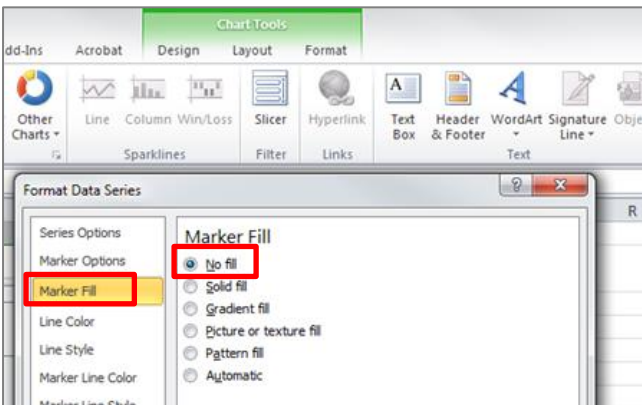




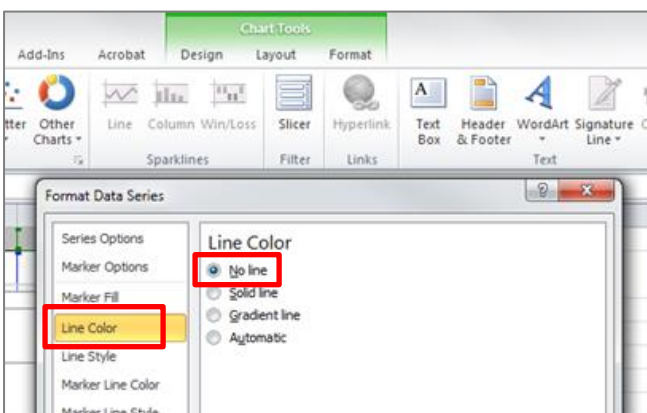
- Right click on the "Total" data series.
- Then click "Format data series"



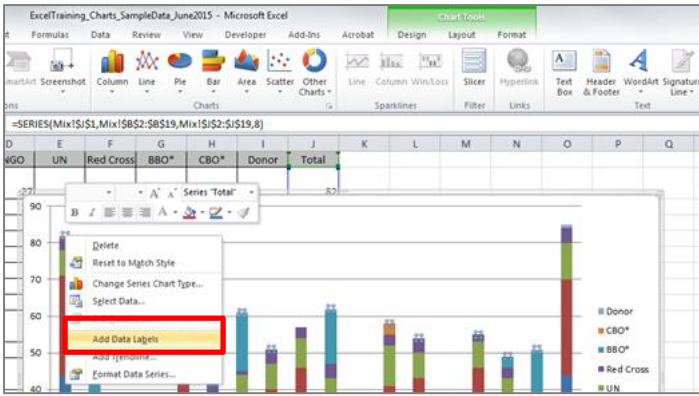
- Click - Marker Option -> None



- Click – Marker Fill -> No fill

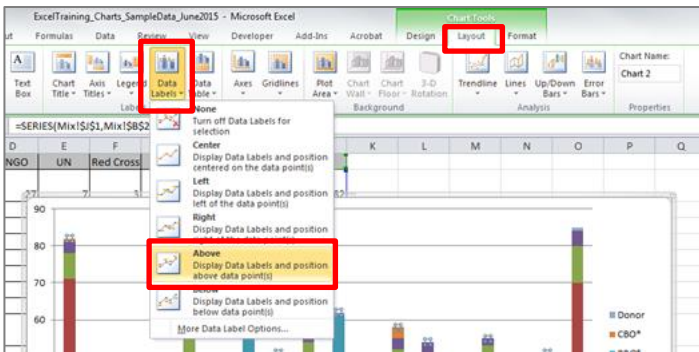


- Click – Line Color -> No Line



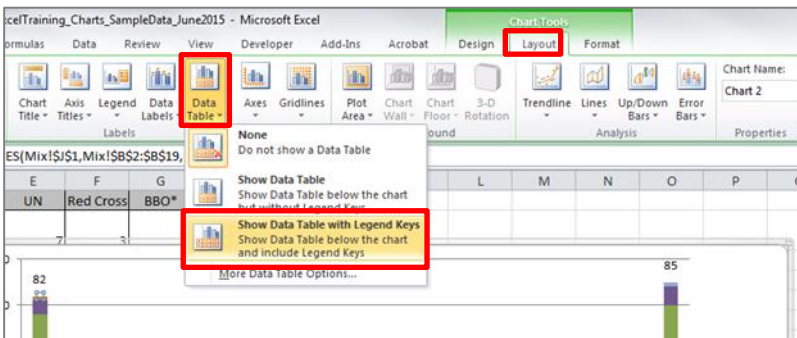
4. Add data label for “Total” data series

- Click on the points of “Total” data series
- Then, right click
- Click “Add data labels”



5. Format data label for “Total” data series

- Click on the points of “Total” data series
- Then, go to “Layout” tab
- Click – Labels -> Data Labels -> Above



6. Add data table

- Select the chart
- Go to Layout Tab
- Click – Labels -> Data Table -> Show data table with legend keys