



World Food
Programme

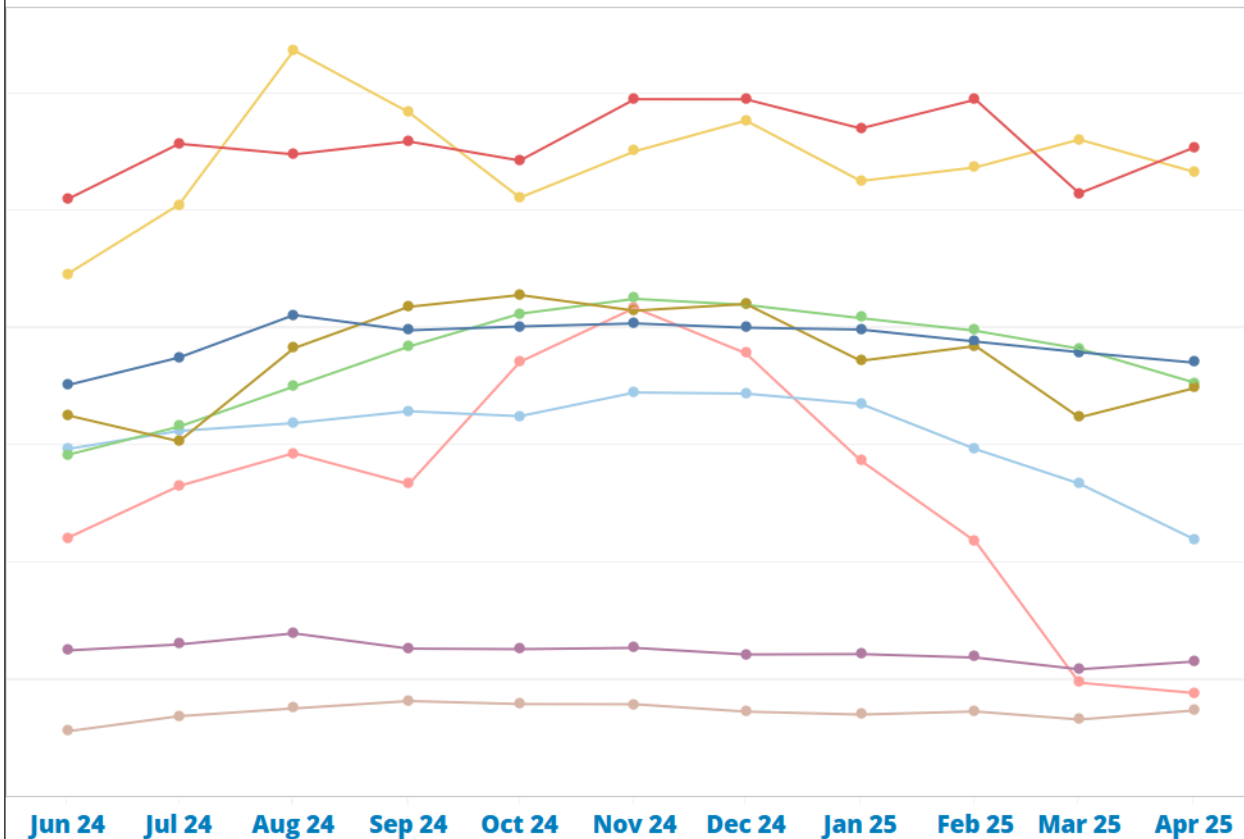
Highlights of April Market Price Monitoring

SAVING
LIVES
CHANGING
LIVES

OVERALL COMMODITY PRICES, APRIL 2025

Overall Average Prices Trends by Commodity

(excluding Wa Region & Laukkaing as monitored in Chinese Yuan)



Commodity

■ Rice ■ MOil ■ Pulses ■ Onion ■ Salt
■ POil ■ Chickpea ■ Egg ■ Tomato

Percent change by commodity

Compared to last month (1M), 3 and 6 months ago, and to the same month last year (1Y)

Commodity	March, 2025	January, 2025	October 2024	April, 2024	January 2021
Basic Food Basket	2.9%	-6.5%	-6.8%	11.0%	341.1%
Rice	6.0%	-5.2%	-8.4%	3.5%	294.8%
POil	7.6%	-2.9%	2.1%	42.1%	509.8%
MOil	-4.9%	1.5%	4.3%	34.1%	483.3%
Chickpea	-2.4%	-7.1%	-7.7%	12.4%	381.3%
Salt	11.7%	4.9%	-6.9%	40.2%	308.6%
Tomato	-9.0%	-69.1%	-76.1%	-15.5%	69.8%
Egg	-7.5%	-13.4%	-14.2%	53.9%	453.0%
Onion	-17.7%	-34.4%	-32.3%	-1.3%	487.3%

April 2025 prices by Area

Rice

State	1M	3M	6M	1Y
Chin	22%	1%	-8%	52%
Kachin	-6%	3%	-5%	23%
Kayah				
Kayin	-3%	-11%	-21%	-16%
Magway	-3%	-19%	-24%	-10%
Mandalay	-1%	-6%	-1%	-8%
Mon	1%	-18%	-19%	-18%
Rakhine	-14%	-19%	-29%	-26%
Sagaing North	1%	-7%	-1%	48%
Sagaing South/Central				
Shan (North)		-20%	-7%	31%
Shan (South)	4%	8%	10%	20%
Shan (Wa)	-1%	4%	10%	8%
Tanintharyi	0%	7%	-15%	-11%
Yangon	2%	-3%	3%	-2%
Rakhine North				
Rakhine Central	-10%	11%	1%	-9%
Rakhine South	-25%	-46%	-53%	-38%
Overall	6%	-5%	-8%	3%

Palm Oil (cooking oil)

State	1M	3M	6M	1Y
Chin	73%	41%	41%	108%
Kachin				
Kayah				
Kayin	-7%	-2%	-12%	31%
Magway	1%	-24%	-20%	46%
Mandalay	0%	-2%	-1%	57%
Mon	3%	-2%	-20%	26%
Rakhine	30%	-3%	5%	35%
Sagaing North	0%	8%	11%	44%
Sagaing South/Central				
Shan (North)		-17%	9%	75%
Shan (South)	-5%	3%	-4%	54%
Shan (Wa)	1%	0%	3%	0%
Tanintharyi	2%	13%	9%	65%
Yangon	1%	14%	5%	65%
Rakhine North				
Rakhine Central	12%	-9%	-11%	3%
Rakhine South	28%	-5%	14%	71%
Overall	8%	-3%	2%	42%

Chickpea

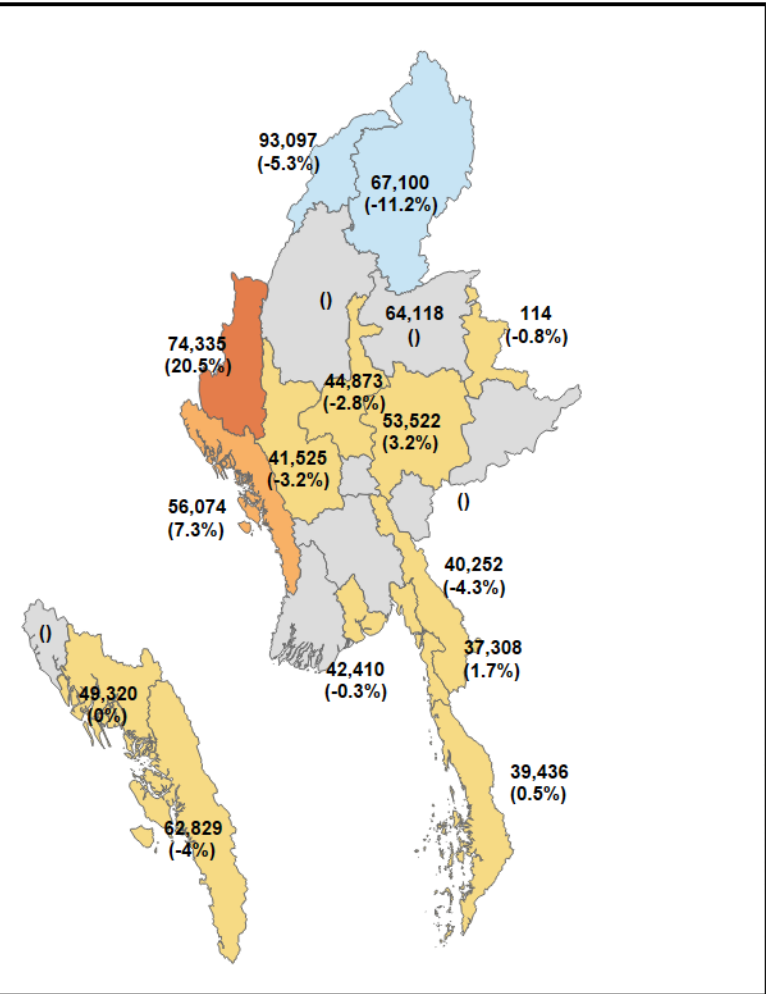
State	1M	3M	6M	1Y
Chin	2%	-14%	-11%	41%
Kachin	-8%	-6%	-11%	53%
Kayah				
Kayin	-12%	-1%	-7%	-2%
Magway	-12%	-18%	-23%	-4%
Mandalay	-12%	-11%	-10%	4%
Mon	0%	-10%	-13%	-3%
Rakhine	25%	8%	8%	32%
Sagaing North	-11%	-1%	12%	100%
Sagaing South/Central				
Shan (North)		-29%	-17%	-12%
Shan (South)	-3%	8%	-11%	2%
Shan (Wa)	-1%	-3%	8%	5%
Tanintharyi	-1%	-16%	-8%	13%
Yangon	-3%	-13%	-13%	-4%
Rakhine North				
Rakhine Central	12%	-16%	-20%	-6%
Rakhine South	0%	11%	22%	84%
Overall	-2%	-7%	-8%	12%

Salt

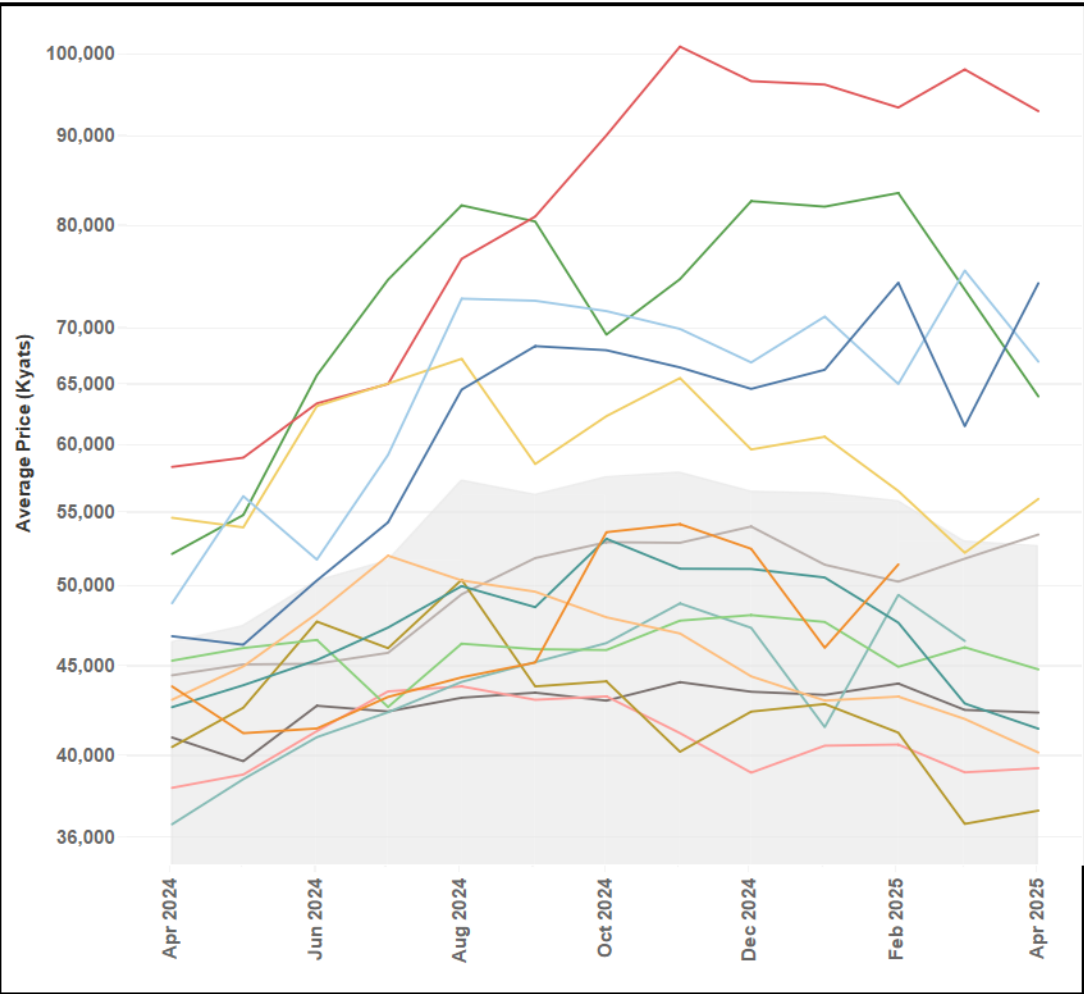
State	1M	3M	6M	1Y
Chin	84%	34%	48%	201%
Kachin	34%	26%	28%	308%
Kayah				
Kayin	38%	35%	50%	126%
Magway	41%	17%	12%	43%
Mandalay	30%	30%	35%	49%
Mon	58%	70%	46%	96%
Rakhine	-22%	-8%	-24%	-11%
Sagaing North	-3%	-7%	-1%	85%
Sagaing South/Central				
Shan (North)		-18%	-18%	53%
Shan (South)	1%	25%	26%	14%
Shan (Wa)	0%	-7%	0%	0%
Tanintharyi	10%	-21%	-16%	54%
Yangon	63%	73%	77%	36%
Rakhine North				
Rakhine Central	-8%	2%	-5%	4%
Rakhine South	31%	4%	14%	22%
Overall	12%	5%	-7%	40%

BASIC FOOD BASKET

April 2025 prices by Area
(compared to *last month*)



Price Trends by Area (April 2024 - April 2025)



State	1M	3M	6M	1Y
Chin	21%	12%	9%	59%
Kachin	-11%	-6%	-6%	37%
Kayah				
Kayin	-4%	-7%	-16%	-7%
Magway	-3%	-18%	-22%	-3%
Mandalay	-3%	-6%	-3%	-1%
Mon	2%	-13%	-16%	-8%
Rakhine	7%	-8%	-10%	2%
Sagaing North	-5%	-3%	3%	59%
Sagaing South/Central				
Shan (North)		-22%	-8%	23%
Shan (South)	3%	4%	1%	20%
Shan (Wa)	-1%	2%	8%	7%
Tanintharyi	1%	-3%	-9%	3%
Yangon	0%	-2%	-2%	3%

Rakhine North				
Rakhine Central	0%	-3%	-8%	-6%
Rakhine South	-4%	-19%	-19%	14%

Overall	3%	-6%	-7%	11%
---------	----	-----	-----	-----

Key Highlights – April 2025

- **Rice** prices declined month-on-month in all regions except Chin State; only more expensive rice varieties available in Paletwa and Matupi townships -> drove the overall average up.
- **Palm oil** prices showed relative stability, except for Rakhine and Chin States where prices increased due to high transportation costs and movement restrictions.
- **Onion** prices gradually declined during the reporting month, driven by the increased availability of newly harvested onions in the market.
- **Tomato** prices spiked in some areas due to transportation difficulties and ongoing conflict. Tomato farmers said prices have been gradually increasing since the beginning of the month; however, buyer demand remains low.
- **Salt:** Traders from Mon State and the Ayeyarwady Region reported a significant price increase, due to damage to salt fields caused by rainfall that began on April 11.
- **Chin State:** While essential commodities remain available, prices have risen sharply due to high transportation costs and continued conflict.
- **Northern Shan:** A price comparison with the previous month is not possible due to the unavailability of data. However, commodity prices fluctuated during the reporting month, as transporters are using alternative routes.
- **Fuel** prices were volatile during the 3rd and 4th weeks of April. On April 18, the Fuel Management Committee announced a reduction in reference prices to just below 3,000 kyats per liter. However, just one week later, the reference price rose to just over 3,000 kyats.

Data was collected from 47 townships, 60 markets, and 191 shops during the 3rd and 4th weeks of April 2025.

Thank you!