



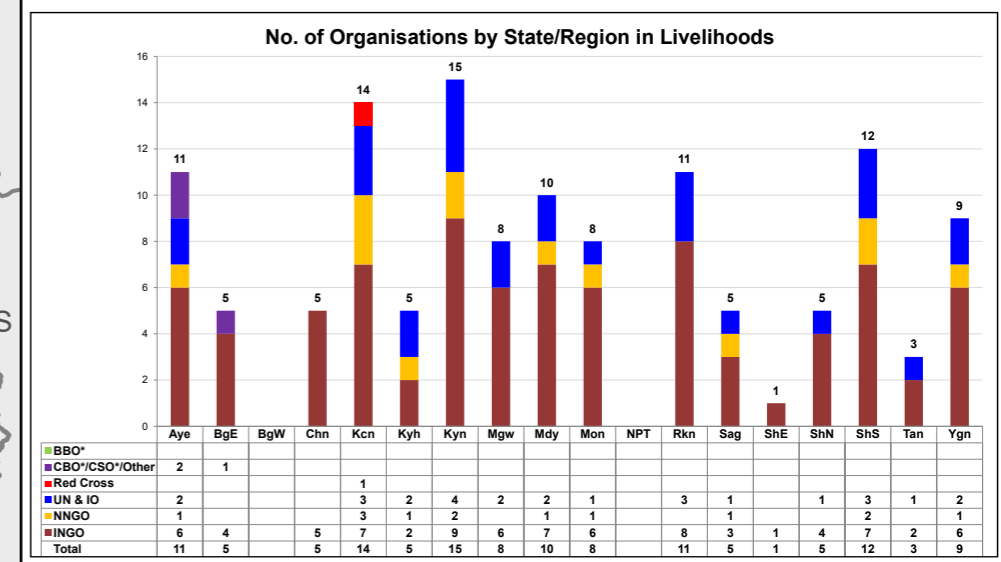
Myanmar Information Management Unit

HDP Nexus 5W - Livelihoods Sector

Projects Under Implementation as of August 31, 2024

Org. Type	INGO	NNGO	UN & IO	Red Cross	CBO*/CSO*/Other	BBO*	Total
All Sectors	98	63	22	7	7	1	198
Livelihoods	28	10	7	1	2	0	48

CBO* - Community-based Organisation BBO* - Border-based Organisation
 CSO* - Civil Society Organisation



Note:

- This map represents information as reported by organisations contributing to the MIMU HDP Nexus 5W. Inclusion of an organisation on this map does not imply endorsement by the United Nations or its projects.
- **Projects implemented at township level are not reflected in the Village Tract/Town map.**
- This map shows presence of an organisation and does not indicate the volume of assistance, the number of beneficiaries, or the extent to which needs are met or unmet.

Map ID: MIMU825v01
 Production Date: 28 October 2024
 Paper Size: A3
 Projection/Datum: Geographic/WGS84
 Data Sources: HDP Nexus 5W data collected by MIMU
 Base map: MIMU

Place Names: General Administration Department (GAD) and field sources. Transliteration by MIMU.

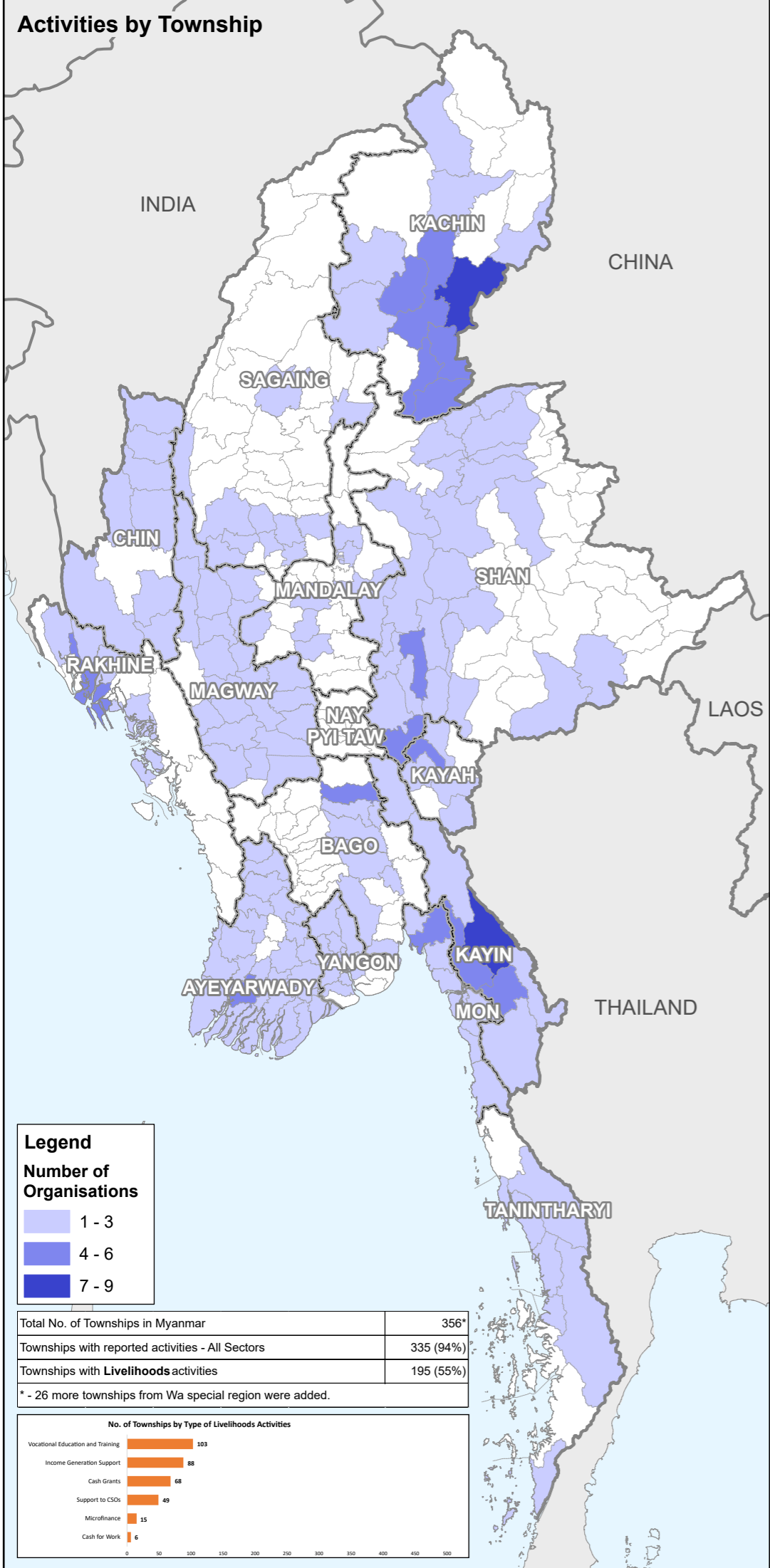
This product has been prepared for operational purposes only, to support humanitarian and development activities in Myanmar. It is based on current available information and is provided "as is", for reference purposes only; the United Nations and the MIMU specifically do not make any warranties or representations as to its accuracy or completeness. Please share updates on any errors or omissions via maps@themimu.info

The boundaries and names shown, and the designations used on MIMU products do not imply any opinion or endorsement of these terms by the United Nations and are in line with the general cartographic practice to reflect the names of such places as designated by the host governments. The United Nations encourages authorities to review place names which include terms that may be viewed or perceived as derogatory.

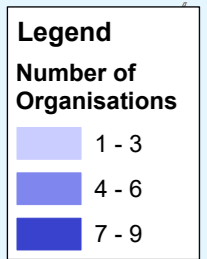
Note that this map may not show all islands of coastal areas due to scale limitations.

© 2024 Myanmar Information Management Unit. MIMU products are not for sale and can be used free of charge with attribution.
 Email: info.mimu@undp.org Website: www.themimu.info

Disclaimer: The boundaries and names shown and the designations used on this map do not imply official endorsement or acceptance by the United Nations.

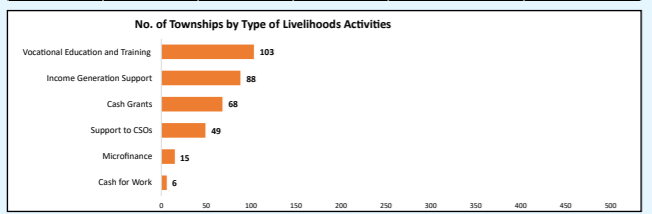


Activities by Township

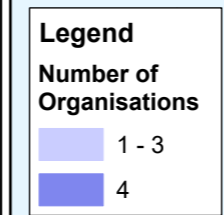


Total No. of Townships in Myanmar	356*
Townships with reported activities - All Sectors	335 (94%)
Townships with Livelihoods activities	195 (55%)

* - 26 more townships from Wa special region were added.



Activities by Village Tract and Town



Total No. of Village Tracts and Towns in Myanmar	14,303
Village Tracts and Towns with reported activities - All Sectors	11,123 (78%)
Village Tracts and Towns with Livelihoods activities	1,338 (9%)

