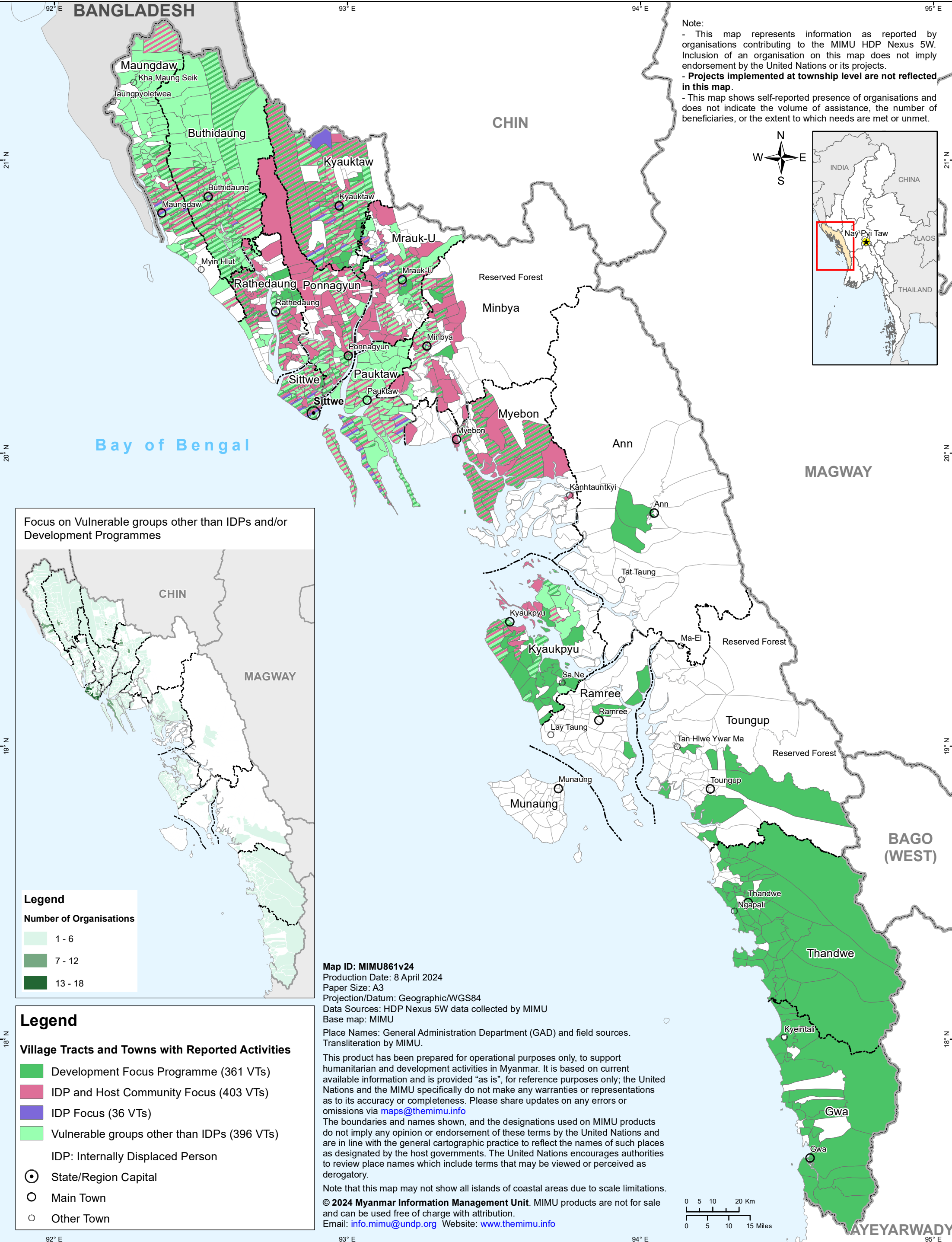


# Agencies' reported activities by Project Focus

## Rakhine State as of February 29, 2024

Note:  
 - This map represents information as reported by organisations contributing to the MIMU HDP Nexus 5W. Inclusion of an organisation on this map does not imply endorsement by the United Nations or its projects.  
 - Projects implemented at township level are not reflected in this map.  
 - This map shows self-reported presence of organisations and does not indicate the volume of assistance, the number of beneficiaries, or the extent to which needs are met or unmet.



Focus on Vulnerable groups other than IDPs and/or Development Programmes



**Legend**

**Number of Organisations**

Light Green	1 - 6
Medium Green	7 - 12
Dark Green	13 - 18

**Legend**

**Village Tracts and Towns with Reported Activities**

- Light Green: Development Focus Programme (361 VTs)
- Medium Green: IDP and Host Community Focus (403 VTs)
- Dark Green: IDP Focus (36 VTs)
- Light Green: Vulnerable groups other than IDPs (396 VTs)

IDP: Internally Displaced Person

- Large Circle: State/Region Capital
- Medium Circle: Main Town
- Small Circle: Other Town

Map ID: MIMU861v24  
 Production Date: 8 April 2024  
 Paper Size: A3  
 Projection/Datum: Geographic/WGS84  
 Data Sources: HDP Nexus 5W data collected by MIMU  
 Base map: MIMU  
 Place Names: General Administration Department (GAD) and field sources.  
 Transliteration by MIMU.

This product has been prepared for operational purposes only, to support humanitarian and development activities in Myanmar. It is based on current available information and is provided "as is", for reference purposes only; the United Nations and the MIMU specifically do not make any warranties or representations as to its accuracy or completeness. Please share updates on any errors or omissions via [maps@themimu.info](mailto:maps@themimu.info)

The boundaries and names shown, and the designations used on MIMU products do not imply any opinion or endorsement of these terms by the United Nations and are in line with the general cartographic practice to reflect the names of such places as designated by the host governments. The United Nations encourages authorities to review place names which include terms that may be viewed or perceived as derogatory.

Note that this map may not show all islands of coastal areas due to scale limitations.

© 2024 Myanmar Information Management Unit. MIMU products are not for sale and can be used free of charge with attribution.  
 Email: [info.mimu@undp.org](mailto:info.mimu@undp.org) Website: [www.themimu.info](http://www.themimu.info)

