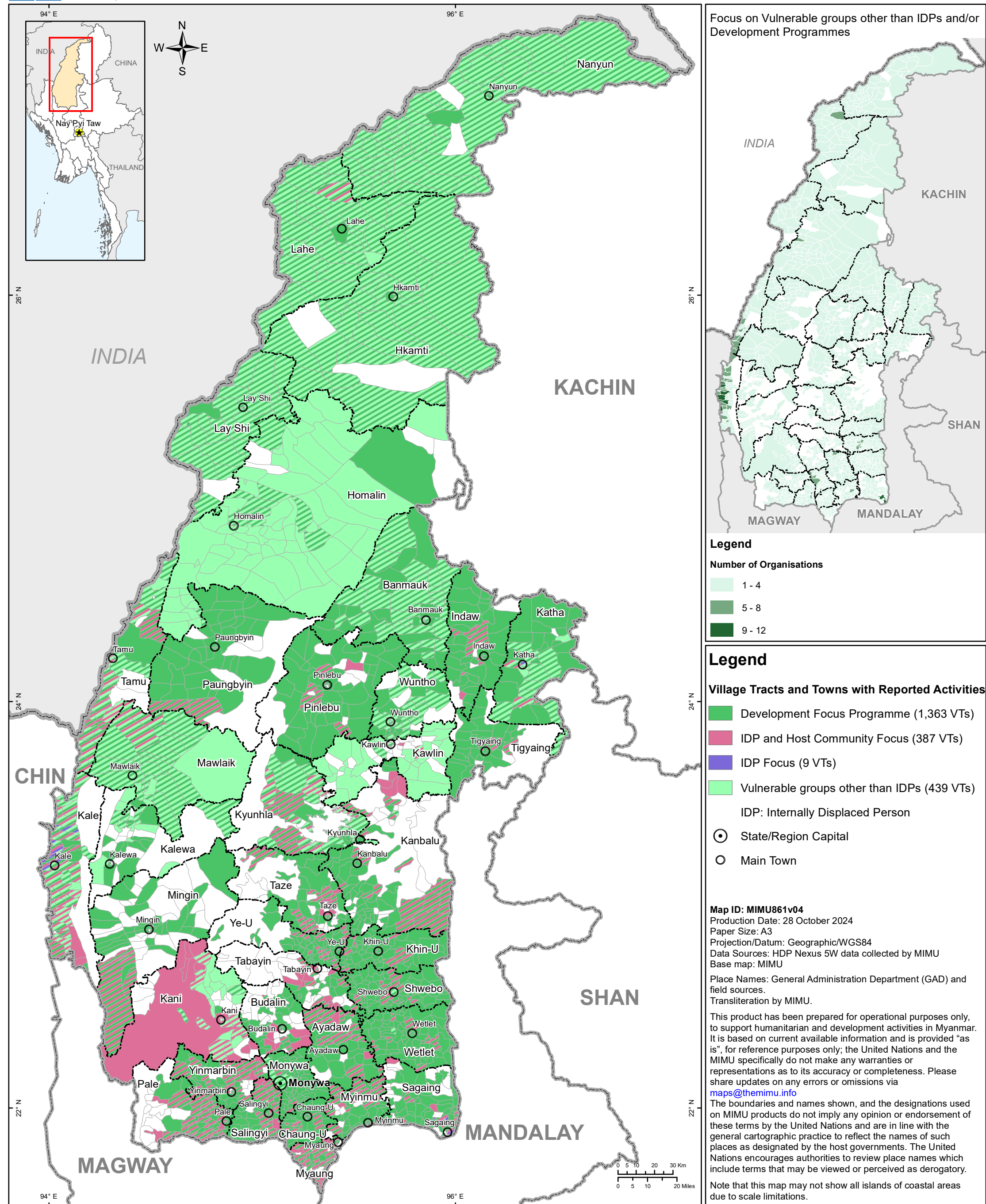
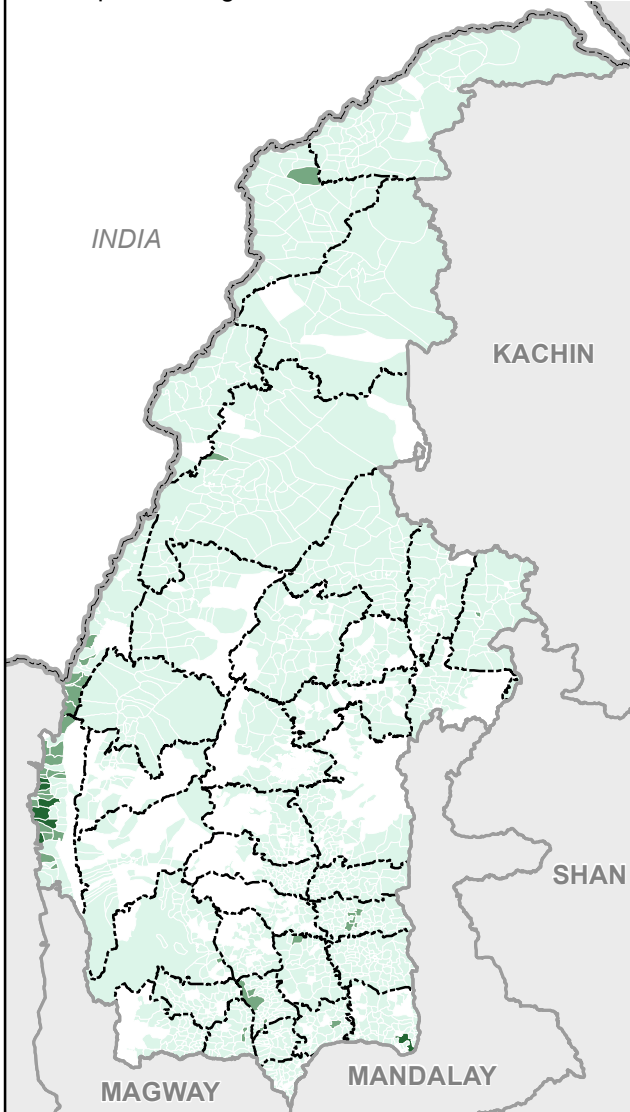


Agencies' reported activities by Project Focus

Sagaing Region as of August 31, 2024



Focus on Vulnerable groups other than IDPs and/or Development Programmes



Legend

Number of Organisations

- 1 - 4
- 5 - 8
- 9 - 12

Legend

Village Tracts and Towns with Reported Activities

- Development Focus Programme (1,363 VTs)
- IDP and Host Community Focus (387 VTs)
- IDP Focus (9 VTs)
- Vulnerable groups other than IDPs (439 VTs)

IDP: Internally Displaced Person

- State/Region Capital
- Main Town

Map ID: MIMU861v04
 Production Date: 28 October 2024
 Paper Size: A3
 Projection/Datum: Geographic/WGS84
 Data Sources: HDP Nexus 5W data collected by MIMU
 Base map: MIMU

Place Names: General Administration Department (GAD) and field sources.
 Transliteration by MIMU.

This product has been prepared for operational purposes only, to support humanitarian and development activities in Myanmar. It is based on current available information and is provided "as is", for reference purposes only; the United Nations and the MIMU specifically do not make any warranties or representations as to its accuracy or completeness. Please share updates on any errors or omissions via maps@themimu.info

The boundaries and names shown, and the designations used on MIMU products do not imply any opinion or endorsement of these terms by the United Nations and are in line with the general cartographic practice to reflect the names of such places as designated by the host governments. The United Nations encourages authorities to review place names which include terms that may be viewed or perceived as derogatory.

Note that this map may not show all islands of coastal areas due to scale limitations.

© 2024 Myanmar Information Management Unit. MIMU products are not for sale and can be used free of charge with attribution.
 Email: info.mimu@undp.org Website: www.themimu.info

Note:

- This map represents information as reported by organisations contributing to the MIMU HDP Nexus 5W. Inclusion of an organisation on this map does not imply endorsement by the United Nations or its projects.
- **Projects implemented at township level are not reflected in this map.**
- This map shows self-reported presence of organisations and does not indicate the volume of assistance, the number of beneficiaries, or the extent to which needs are met or unmet.