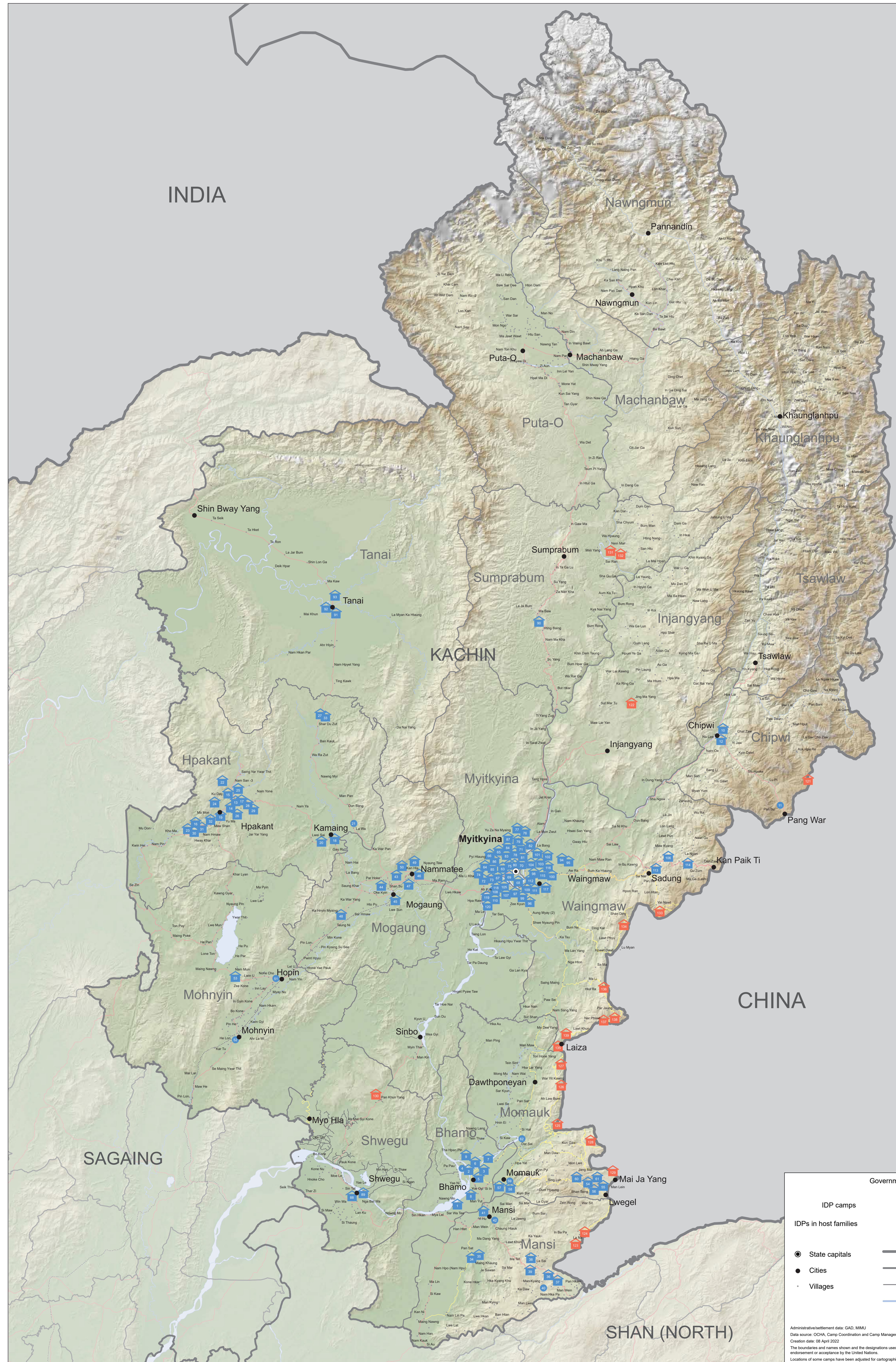




MYANMAR

IDP Sites in Kachin State

As of 28 February 2021



List of IDP Sites

Data provided by the Camp Coordination and Camp Management (CCCM) Cluster based on update of 28 February 2021

No.	State	Township	IDP Site	IDPs
1	Bhamo	Nawngmun	(3 mile) Shwe Pyi Tar (SLCA)	340
2			AD-2000 Thantana Compound	1,226
3			Ang Thar Church	37
4			Bhamo- IDPs in Host	329
5			Hoi San Church	225
6			Lisu Boarding-house	165
7			Nam Hiang Extension Ward camp	185
8			Phan Khar Kone	339
9			Rubert Church	3,817
10			Chpwi	Chpwi
11	Chpwi Pan Wa (Host IDP)	20		
12	Lhaovo Baptist Church (LBC)	884		
13	AG Church, Hmaw Si Sa	438		
14	AG Church, Maw Wan	66		
15	Baptist Church, Hmaw Si Sa(Lon Khin)	249		
16	Chin Church, Sek Mu	24		
17	Dhama Rakhta, Nyein Chan Tar Yar Ward(Lon Khin)	439		
18	Hiang Naung Baptist	139		
19	Hpakant Baptist Church, Nam Ma Hpat	500		
20	Karmang RC Church	53		
21	Lawa RC Church-relocated	250		
22	Lhaovo Baptist Church (LBC)	639		
23	Lisu Baptist Church, Maw Shan Vi, Sek Mu	100		
24	Lisu Baptist Church, Maw Wan Ward	53		
25	Maw Wan, Mawin Baptist Church	14		
26	Mayin church (Aung Yar pre-school compound)	101		
27	Nam Ma Phyi, COC	24		
28	Nam Ma Hoi Catholic Church	230		
29	Rawan Baptist Church, Maw Shan Vi, Sek Mu	111		
30	Shar Du Zui KBC church	71		
31	St Columban Iona Hoi camp	469		
32	Ward 2 Sai Taung Baptist Church, Sek Mu	134		
33	Yunmar Baptist Church	64		
34	Ming Khauang	1,724		
35	Ming Khauang Catholic Church	732		
36	Man Wing Baptist Church	666		
37	Man Wing Baptist Church Cultural Compound	677		
38	Man Wing Catholic Church	3,302		
39	Man Wing Catholic Church II	830		
40	Man Wing IDPs in Host	1,071		
41	Mansi Baptist Church	803		
42	Mansi- IDPs in Host	348		
43	Emmanuel AG Church	32		
44	Kyun Taw Baptist Church	76		
45	Ma Hwang Baptist Church	73		
46	Namti Lamdon, Yang KBC Camp	599		
47	Nai Gy Kone Baptist Church	48		
48	Sar Hmaw - KBC	136		
49	St Francis RCC 1	263		
50	St Francis RCC 2	416		
51	Hopin- IDPs in Host	126		
52	Mohnyin- IDPs in Host	32		
53	Nawng Hoi (Indawgyi) Baptist Church	127		
54	Loi Je Baptist Church	241		
55	Loi Je Catholic Church	448		
56	Loi Je Lisu Camp	1,354		
57	Man Bung Catholic compound	571		
58	Momauk Baptist Church	2,978		
59	Momauk- IDPs in Host	917		
60	Mo Thi- IDP in Host	101		
61	Nyaung Na Pin	291		
62	Seng Ga	277		
63	Du Kathawng Baptist	193		
64	Jan Ma Kawng Baptist Church	1,184		
65	Jan Ma Kawng Catholic Church	601		
66	Jaw Maset Camp	649		
67	Ka Bu Dam COC	44		
68	Le Kone Bethlehem Church	376		
69	Le Kone Zui Baptist Church	697		
70	Malyang Baptist Church	329		
71	Man Hwang Baptist Church	614		
72	Maw Hwang Hka Nan Baptist Church	90		
73	Maw Hwang Lhaovo Baptist Church	166		
74	Nam Kway St. John Catholic Church	338		
75	Niang Dung Baptist Church	317		
76	Pa Daik Myang(Pa La Na)	913		
77	Pa Daik Myang(Pa La Na) II	1,141		
78	Saint Matthew (Shwe ma le-hapuu) camp	83		
79	Sector 5 Panmatti Quarter	144		
80	Shalapani Su Nge Tower	560		
81	Shalapani, Thida Aye Baptist Church	1,119		
82	Shwe Zet Baptist Church	621		
83	Tat Kone Baptist Church	531		
84	Tat Kone COC Baptist - Tat Kone Hoi San	292		
85	Tat Kone Galile Baptist Church	197		
86	Tat Kone San Pye Baptist Church	238		
87	Trinity camp	87		
88	Shwe Gu Baptist Church	263		
89	Shwe Gu Catholic Church	175		
90	Sumprabum	Sumprabum	St Joseph Tanai RC camp	171
91	Tanai CoC		158	
92	Tanai KBC Camp		690	
93	Ding Jang Yang (1)		240	
94	Ding Jang Yang (2)		189	
95	Hai Shi		371	
96	Hat Cho		291	
97	Lhaovo Baptist Convention Old Office Camp		247	
98	Lisu Zonal camp		220	
99	Mading Baptist Church		238	
100	Maina AG Church	2,163		
101	Maina Catholic Church (St. Joseph)	1,775		
102	Maina KBC (Bawng Ring)	2,920		
103	Maina Lawang Baptist Church	283		
104	Maina Mawin Baptist Church	221		
105	Naru Kawng (Post 6 camp)	519		
106	Naung Patanaelachid	69		
107	Naung Tar Law (Kyat Chan)	80		
108	Nawng Hoo Village	85		
109	Phaung Nhai Camp	183		
110	Qiz 2 Lhaovo Baptist Church	590		
111	Qiz 2 Momau Baptist Church	360		
112	Sadung	247		
113	Shing Jai	1,194		
114	Thangyay Lisu Baptist Church	192		
115	Wamaw Baptist Zonal Office 2	387		
116	Wamaw AG Church	263		
117	Wamaw LBC church	231		
118	Wamaw St Joseph RC Church	139		
119	Yau Ka lat Kone Camp	247		
120	Total IDPs in Kachin in Government controlled areas	89,380		
121	Chpwi	Chpwi	Hpaon Hoyer - BP1	536
122	Bum Ra Yang Camp		586	
123	Mansi Bum Tai Pa		1,900	
124	Lama Sub Pa		2,493	
125	Dum Bung		393	
126	Hpaun Lum Yang		3,729	
127	Je Yang Hka		8,245	
128	Nhkwang Pa		1,574	
129	Pa Kathawng		3,682	
130	Fang Hmaw Yang		1,329	
131	Ndu Yang	646		
132	Salang Yang	353		
133	Border Post B	421		
134	Hau Shau (BP 12)	966		
135	IDP Boarding School, A Len Bum	366		
136	Maga Yang	1,625		
137	Pajau - Jan Ma	966		
138	Sha-I Yang	1,881		
139	Woi Chyi	7,040		
140	Total IDPs in Kachin in areas controlled by armed groups or contested areas	39,147		
	Total IDPs in Kachin	88,527		

Government controlled areas (Blue outline)

Areas controlled by armed groups or contested areas (Red outline)

IDP camps (Blue house icon)

IDPs in host families (Blue circle icon)

State capitals (Black circle with dot icon)

Cities (Black dot icon)

Villages (Black dash icon)

International boundaries (Thick grey line)

States/regions (Thin grey line)

Township boundaries (Dashed grey line)

Rivers (Blue line)

Paved roads (Red line)

Rail roads (Black line with cross-ticks)

Roads to IDP camps (Yellow line)

Tertiary roads (Grey line)

Administrative/settlement data: GAD, MMU
 Data source: OCHA, Camp Coordination and Camp Management (CCCM) Cluster
 Creation date: 08 April 2022
 The boundaries and names shown and the designations used on this map do not imply official endorsement or acceptance by the United Nations.
 Locations of some camps have been adjusted for cartographic presentation.

50 km