

CCCM SITE MONITORING: Nget Chaung 1 Camp



April-2018



Township: Pauktaw (Rakhine, MYANMAR)



Geographic Data: Vil. Tract / Town : Pon Nar Gyi

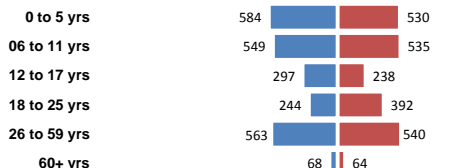
Village/Ward : Cha Eik

Demographic data

 
4,604 people
1,010 households

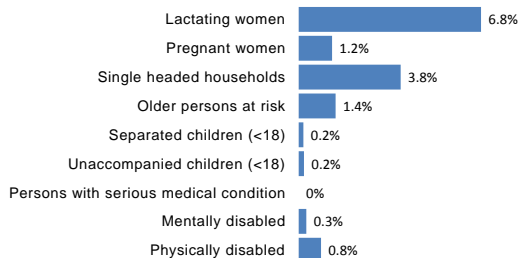
 
59% children
3% elderly

 
13 new borns
1 deaths



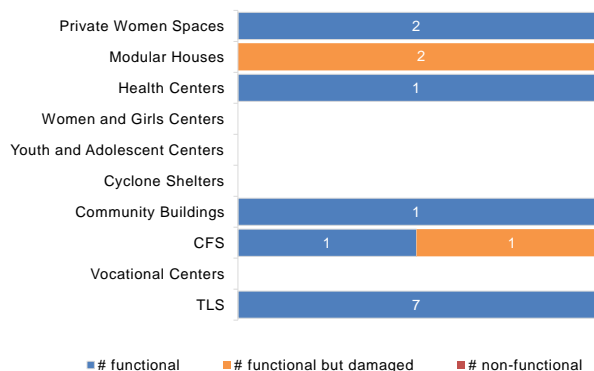
Total 50% Male 50% Female

Vulnerabilities data

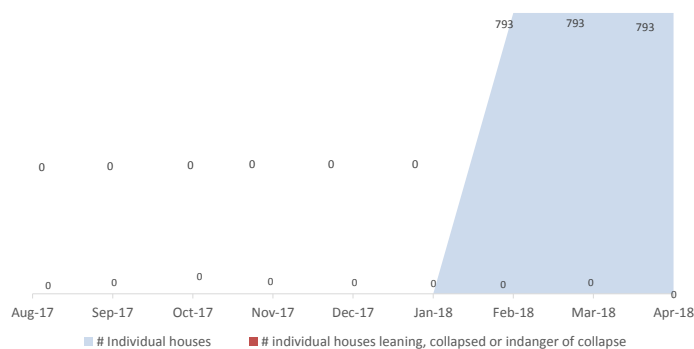


Camp Management or Focal Point Agency: LWF

Community infrastructure damage



Shelter rehabilitation and repair



Sector Overview



CCCM	# of coordinations meetings with CMCs	1
	# of meetings with service providers	1
Community Based Group	# of meetings held	
	DRR Management Committee	
	Youth Development Group (YDG)	
	Women Development Group (WDG)	
	Parent Teacher Association (PTA)	
	Fire Safety Volunteer Group (FSVG)	
	Child Development Group (CDG)	
	Camp Management Committee (CMC)	



Health	Health facility presence	Yes
	# of NGO clinics	1
	# of Government clinics	0
	IDPs access to nearby health facility	Yes

NFI

NFI	# of HHs receiving WaSH consumables (soap, towel)	0
	# of HHs receiving Sanitary Kits / Dignity Kits	0



Shelter	# of temporary shelters (8 – 10 units)	793
	# of informal / makeshift shelters	145
	Date of the last Shelter Cluster assessment	01-Apr-18

Functional Non-functional

	# Lightings at Latrines	0	0
	#Lighting at other areas of camps	0	0
WASH	# of Hand Pumps	0	8 (100%)
	# of Ponds	5	3
	# of Latrines	121	14 (10%)
	# of Solid Waste Management System	5	0



Service Delivery Actors in the Camp

