



CCCM SITE MONITORING: Nget Chaung 1 Camp



February-2018



Township: Pauktaw (Rakhine, MYANMAR)

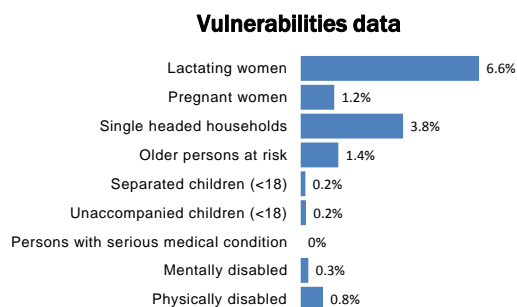
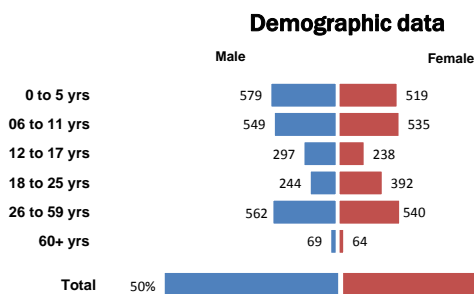
Geographic Data: Vil. Tract / Town : Pon Nar Gyi

Village/Ward : Cha Eik

 
4,588 people 1,010 households

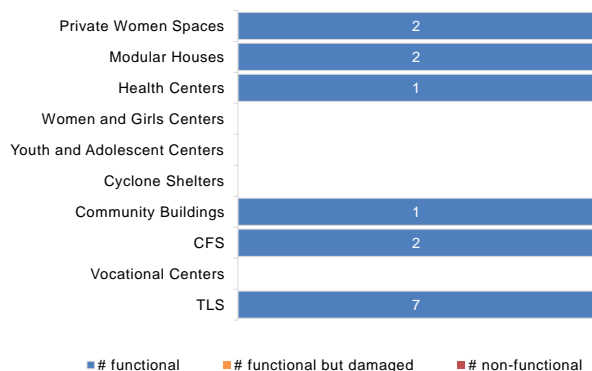
 
59% children 3% elderly

 
6 new borns 2 deaths

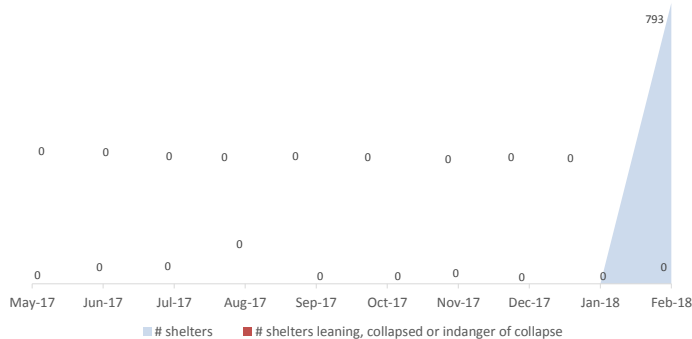


Camp Management or Focal Point Agency: LWF

Community infrastructure damage



Shelter rehabilitation and repair in 2017



Sector Overview



CCCM	# of coordinations meetings with CMCs	1
	# of meetings with service providers	1
Community Based Group	# of meetings held	
Youth Development Group (YDG)		1
Women Development Group (WDG)		1
Parent Teacher Association (PTA)		1
Fire Safety Volunteer Group (FSVG)		1
Camp Management Committee (CMC)		1



Health	Health facility presence	Yes
	# of NGO clinics	1
	# of Government clinics	0
	IDPs access to nearby health facility	Yes

NFI

NFI	# of HHs receiving WaSH consumables (soap, towel)	1010
	# of HHs receiving Sanitary Kits / Dignity Kits	0



Shelter	# of temporary shelters (8 – 10 units)	793
	# of informal / makeshift shelters	145
	Date of the last Shelter Cluster assessment	01-Feb-18

Functional Non-functional

# Lightings at Latrines	0	0
#Lighting at other areas of camps	0	0
WASH		
# of Hand Pumps	6	2 (25%)
# of Ponds	5	1
# of Latrines	145	0 (0%)
# of Solid Waste Management System	1	0



Service Delivery Actors in the Camp

