



CCCM SITE MONITORING: Sin Tet Maw Camp



March-2018



Township: Pauktaw (Rakhine, MYANMAR)

Geographic Data: Vil. Tract / Town : Sin Tet Maw

Village/Ward : Sin Tet Maw

 
2,845 people 617 households

 
42% children 6% elderly

 
6 new borns 0 deaths

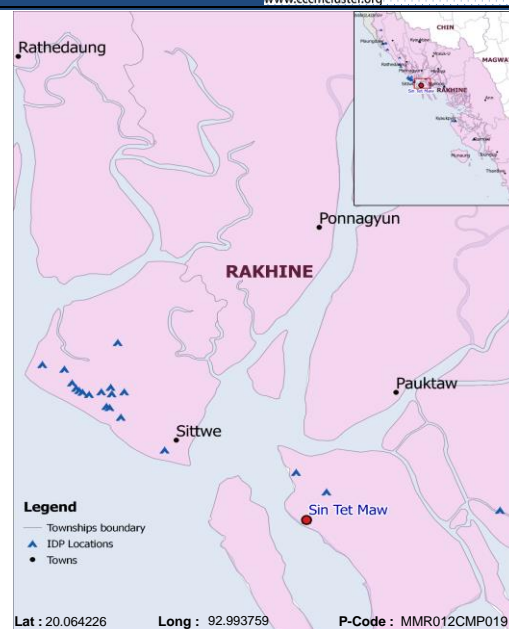
Demographic data

	Male	Female
0 to 5 yrs	220	191
06 to 11 yrs	194	169
12 to 17 yrs	217	196
18 to 25 yrs	304	325
26 to 59 yrs	409	443
60+ yrs	88	89

Total 50% 50%

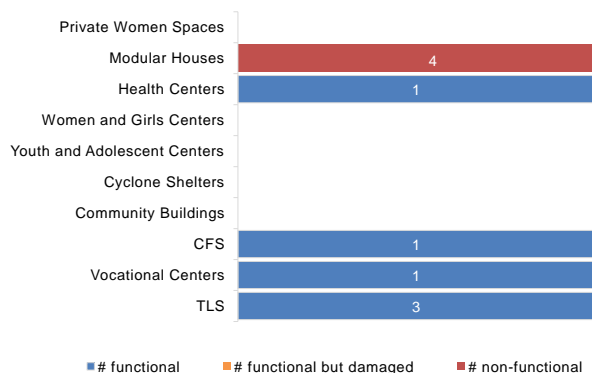
Vulnerabilities data

Lactating women	3.7%
Pregnant women	0.9%
Single headed households	0%
Older persons at risk	0%
Separated children (<18)	0%
Unaccompanied children (<18)	0%
Persons with serious medical condition	0%
Mentally disabled	0%
Physically disabled	0%

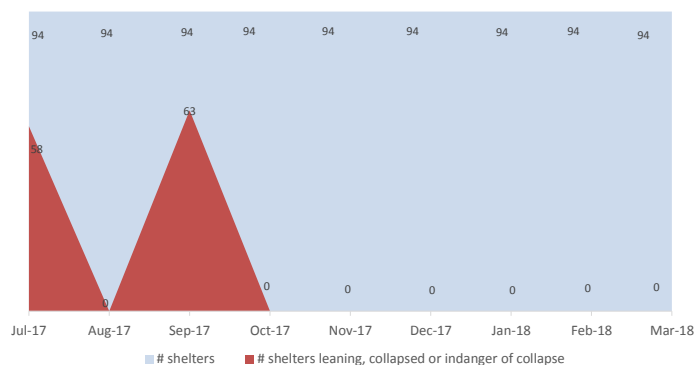


Camp Management or Focal Point Agency: DRC

Community infrastructure damage



Shelter rehabilitation and repair



Sector Overview



CCCM	# of coordinations meetings with CMCs	1
	# of meetings with service providers	1
Community Based Group	# of meetings held	
Youth Development Group (YDG)		1
Men's Sports Club		1
Elderly Group(EG)		1



Health	Health facility presence	No
	# of NGO clinics	0
	# of Government clinics	0
	IDPs access to nearby health facility	Yes

NFI

NFI	# of HHs receiving WaSH consumables (soap, towel)	722
	# of HHs receiving Sanitary Kits / Dignity Kits	722



Shelter	# of temporary shelters (8 – 10 units)	94
	# of informal / makeshift shelters	752
	Date of the last Shelter Cluster assessment	01-Jan-18

Functional Non-functional

	# Lightings at Latrines	0	2
	#Lighting at other areas of camps	5	1
WASH	# of Hand Pumps	7	5 (42%)
	# of Ponds	0	0
	# of Latrines	104	2 (2%)
	# of Solid Waste Management System	1	0



Service Delivery Actors In the Camp

