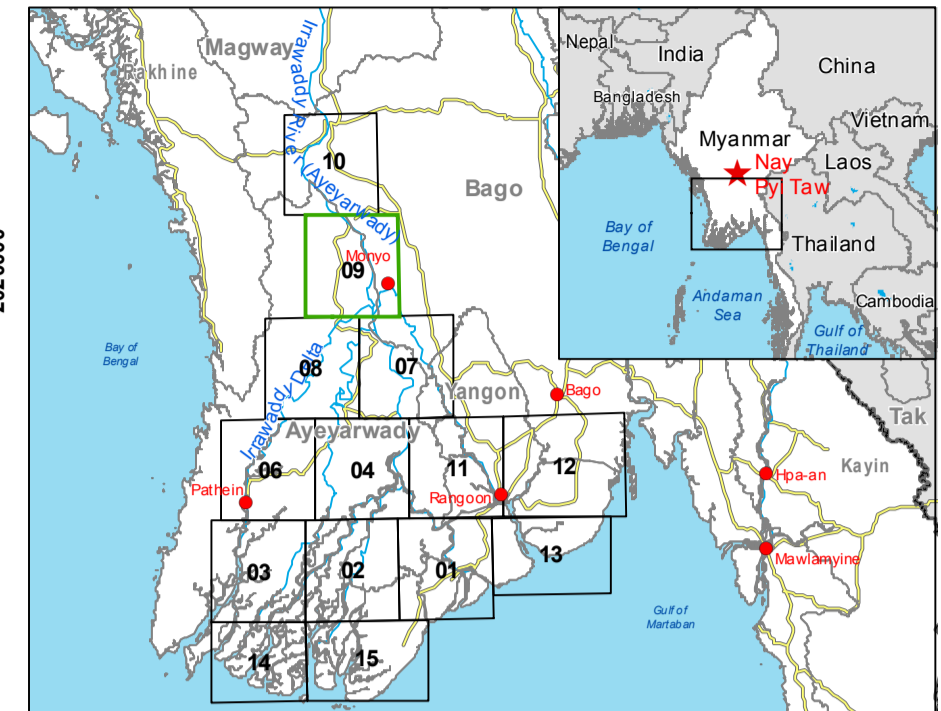


Monyo - MYANMAR

Flood - 01/08/2015

Delineation Map - Moni02



Cartographic Information

1:110000 Full color ISO A1, low resolution (100 dpi)

0 2.5 5 10 km

Grid: WGS 1984 UTM Zone 46N map coordinate system
 Tick marks: WGS 84 geographical coordinate system

Legend

Crisis Information	Hydrology
Flooded Area (04-09-2015 11:46 UTC)	River
General Information	Lake
Area of Interest	Reservoir
Administrative boundaries	River
Region	Transportation
Settlements	Railway
Populated Place	Primary Road
Built-Up Area	Secondary Road
	Local Road

Consequences within the AOI on 04/09/2015

	ha	Affected	Total in AOI
Flooded area		42463	42463
Estimated population	Inhabitants	404994	828745
Settlements	Built-up area	2	1021
Transportation	Primary roads	0	52,7
	Secondary roads	3	112,2
	Local roads	23	212,8
	Railways	0	105,5

Map Information

Unusual heavy monsoon rains have been affecting Myanmar since 16 July causing river overflows and floods. In the past few days, torrential rains damaged farmland, roads, rail tracks, bridges and houses. Reservoir are seasonal inundated areas and water bodies probably due to agricultural practices (paddy fields).
 The core users of the map is Emergency Response Coordination Centre (ERCC).

Relevant date and time records (UTC)

Event	01/08/2015 00:00	Last crisis status	17/08/2015 00:13
Activation	07/08/2015 10:00	Map production	05/09/2015

Data Sources

Sentinel 1-A (acquired on 04/09/2015 11:46, GSD 20 m) provided by European Space Agency.
 Landsat-8 @ U.S. Geological Survey (acquired on 05/03/2015, GSD 15 m, approx. 0.88% cloud coverage)
 Base vector layers based on OpenStreetMap © OpenStreetMap contributors, Wikimapia.org, GeoNames (approx. 1:10000, extracted on 01/01/2001), refined by e-GEOS. Source information is included in vector data.
 Elevation data: SRTM (90 m posting). Height in meters above mean sea level.
 Population data: Landscan 2010 © UT BATTELLE, LLC.
 All Data sources are complete and with no gaps.
 Inset maps based on: Administrative boundaries (JRC 2013), Hydrology, Transportation (Natural Earth, 2012), Settlements (Geonames, 2013).

Dissemination/Publication

Delivery formats are GeoTIFF, GeoPDF, GeoJPEG and vectors (shapefile and KML formats).
 Map products available in the Copernicus EMS Portal at the following URL:
<http://emergency.copernicus.eu/mapping/list-of-components/EMSR130>
 All products are © of the European Union.

Disclaimer

The products elaborated in the framework of current mapping in rush mode activation are realized to the best of our ability, within a very short time frame during a crisis, optimizing the available data and information. All geographic information has limitations due to scale, resolution, date and interpretation of the original data sources. The products are compliant with Copernicus EMS Rapid Mapping Product Portfolio specifications.

Map Production

The present map shows the flood delineation in the area of Monyo (MYANMAR). The basic topographic features are derived from public datasets, refined by means of visual interpretation of pre-event image Landsat-8.
 Thematic layers, assessing the delineation of the event have been derived from post-event image Radarsat-2.
 All satellite images have been radiometrically enhanced, orthorectified with RPC approach (using SRTM elevation data).
 The estimated geometric accuracy of this product is 50 m CE90 or better, from native positional accuracy of the background satellite image.
 The estimated thematic accuracy of this product is 85 % or better, based on previous experience in using high-resolution SAR for flood extent delineation. Please be aware that the thematic accuracy might be lower in urban and forested areas due to known limitations of the analysis technique.
 Only the area enclosed by the Area of Interest has been analyzed.

Contact

Map produced by e-GEOS under contract 259736 with the European Union.
 Name of the release inspector (quality control): e-GEOS(ODO).
 E-mail: rapidmapping@ems-copernicus.eu

