

This tool collects information on **Myanmar-focused assessments, surveys, reports and publications in development and humanitarian sectors** to support agencies, government entities, researchers, donors to:

- share assessment tools (methodologies, questionnaires), and results (data, reports)
- coordinate information gathering initiatives,
- benefit from expertise, knowledge and learning in other sectors,
- avoid duplication and gaps in assessment coverage.

Over 1600 assessments and publications have been registered as of April 2025. Each entry includes details of the implementing agency, the sectors/topics and geographic areas covered, the status (whether planned, ongoing or completed), the method by which information was gathered, products available for dissemination and how they can be accessed.

The implementer/donor uploads and updates their own assessments and publications through the MIMU website or using the offline forms. MIMU shares the results in a dashboard and spreadsheet.

What it includes:

The Tracking tool includes any **planned, ongoing or completed assessments, surveys, research or publications** relevant to the humanitarian or development situation in Myanmar to support inter-agency efforts.

- An **“assessment”** is defined as a survey or other piece of research.
- A **“publication”** is any other published report or analysis. This could include, for example, a desk review on donor policies or the situation in a particular area.
- It does **not include** internal reports or donor reports of individual agencies.

New Features added for COVID-19, Earthquake-2025 and Disability related Reports

- If the reports/publications/assessments done is related to COVID-19, Earthquake-2025 and Disability, click “Yes”.
- Predefined workstreams can be found if you type related character and can also type any other relevant workstreams.
- Relevant pillar can be typed in the text box (pillar number and Pillar name)

Earthquake-2025 Related *

☐ Yes
 ☒ No

COVID-19 Related *

☐ Yes
 ☒ No

Disability Related *

☐ Yes
 ☒ No

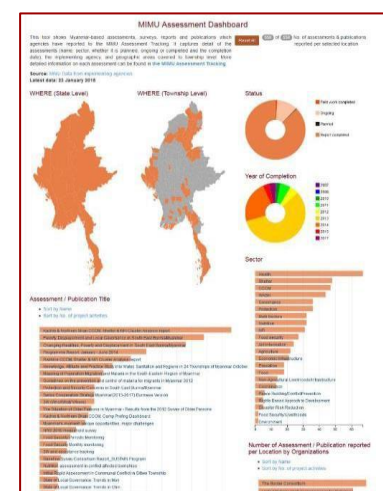
How information is shared:

The **MIMU Assessment dashboard** shows submitted assessments and publications at a glance:

<http://themimu.info/assessment-dashboard>

The **Assessment & Publication Search** allows you to search for specific assessments/publications or for more detail on approaches and methodologies used by other initiatives:

<http://themimu.info/assessments-and-publications>



MIMU Assessment and Publication Tracking

To add your NEW Assessments/Publications:

❖ First, register

Users must be registered to submit or update the records of an assessment/publication:

- Go to the “**Assessment Tracking**” page on the MIMU website <http://themimu.info/assessments-and-publications>,
- Click “**To submit/update Assessments & Publications**”.
- Then click “**Login/Register to submit assessment**”.



+ Overview of Recorded Assessments

→ To submit/update Assessments & Publications

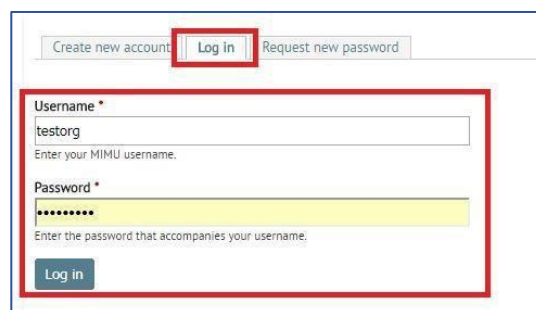
- Before adding an assessment please read our [Guideline_Assessment_and_Publication_06Feb2018.pdf](#)
- To submit an assessment offline, please fill in the [MIMU_Assessment_Registry_EntryForm.xls](#) and email it
- To submit or edit an assessment online please click the button below.
- Newly added or edited assessments will be subject to review by MIMU prior to being published/updated

[Login/Register to submit assessment](#)

❖ Log-in, or create an account

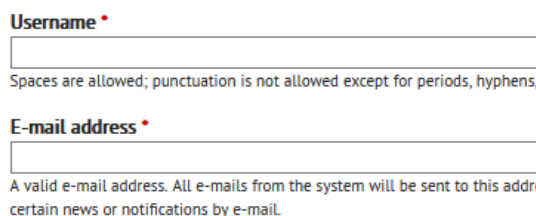
If you are already registered

- Use the “**Log In**” tab
- If you need a new password, click “**Request new password**” and complete this section - MIMU will send a link to reset password to your email.



If you are not already registered

- Click “**Create new account**” and submit the requested information.
- Or send an email to MIMU to assist in creating a new account tun.tun.naing@undp.org

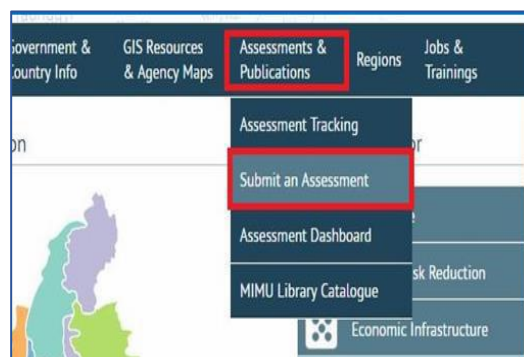



❖ To edit/submit a NEW Assessment or Publication

- Go to “**Submit an Assessment**” - <http://themimu.info/node/add/assessments>
Complete the online form. Required information is noted at the end of this guide.

*NOTE - The form will remain open for up to 30 minutes.
After non-submitted information will be lost.*

- Be sure to **upload your assessment/publication** with the form
- Click “**Save**” to save and submit. MIMU will review your submission for any clarification and upload within 3 working days.



MIMU Assessment and Publication Tracking

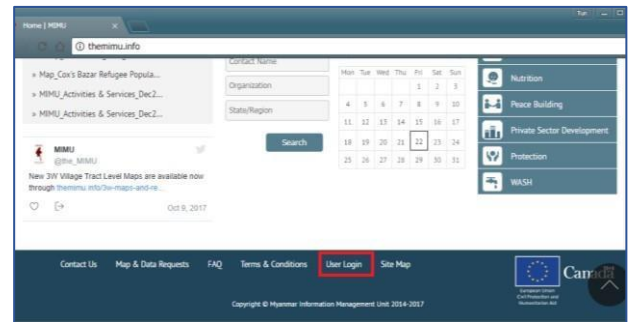
To update/edit an existing Assessment record from the MIMU website

❖ Log-in

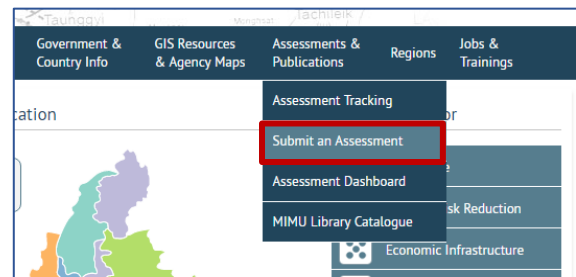
Click **“User Login”** on the lower ribbon of the MIMU website www.themimu.info

OR Click **“Submit an Assessment”**

<http://themimu.info/node/add/assessments>



OR Open **“Submit an Assessment”** (under **“Assessment and Publications”** tab on the top ribbon).



❖ Find your record

Type your organisation name and/or other information to help your search.

Click **“Search”** to find your assessment.

Assessment & Publication Search

Assessment Title	Participating Agencies	Type of Assessment
<input type="text"/>	- Any -	- Any -
Sectors	State/Region	Townships
- Any -	- Any -	- Any -
Start Date	Status	End Date
- Year -	- Any -	- Year -
<input type="button" value="Search"/> <input type="button" value="Reset"/>		

On your assessment record,

- Right click on **“View Details”**
- Click **“Open link in new tab”**.

Assessment Title	Sectors	Agencies	State/ Region	Start Date	Status	Availability	File Attachment	Details
Who Are The Real Winners of Myanmar's Latest Oil and Gas Block Sales	Other	GW	Country-wide	Jan-2013	Report completed	Publicly available		View Details
Too Much Too Soon - The Dilemma of Foreign Aid to Myanmar	Aid Information, Coordination	NATHAN	Country-wide	Jan-2012	Report completed	Publicly available		View Details
Youth and Everyday Peace: Fostering the Untapped Potential of Myanmar's You...	Other	PSF	Country-wide	Jan-2017	Report completed	Publicly available		View Details
3W (Who/What/ Where) (Sep 2017)	Multi Sectors	MIMU	Country-wide	Sep-2017	Report completed	Publicly available		View Details

❖ Edit your assessment/publication record

Go to the **“Edit”** tab and edit your record.

After editing, scroll down to the bottom of the page and click **“Save”**.

View **Edit**

Who Are The Real Winners of Myanmar's Latest Oil and

MIMU Assessment Code: CPG-GW_157

Participating Agencies: Global Witness

Entry Date: 14-Dec-2017

Last Updated: 14-Dec-2017 14:39

Type of Assessment: Development focused

Sector(s) covered: Other

MIMU Assessment and Publication Tracking

Requested information on Assessments and Publications

❖ Who and What

Your contact information	Contact person for any queries on what is included on the form
Participating agencies	The names of agencies participating in the assessment. More than one agency can be added. Type the agency name and select from the list. If it is not in the list, create the new one.
Whether your assessment is public	Publicly available Assessments and Publications will appear on the MIMU dashboard and products, clearly noting your agency name. If you choose 'No', your post will not be visible on the publicly available dashboard and spreadsheet and MIMU users cannot make direct contact with you on this assessment.
Assessment/Publication Title	
Assessment type	Is it emergency, preparedness, development focused or other
Sector(s), sub-sector(s) covered	You can include more than one sector/sub-sector. Select sectors from the dropdown list, and sub-sectors can be freely entered in the cell.

❖ Where - Location and Assessment Coverage

Location	The States/Regions and townships covered. Select the State/Region and then the township. Repeat for each township included in the assessment/publication. Or select "countrywide" if this is the case.
Assessment coverage	The number of villages, households, IDP camps assessed/surveyed

❖ How - Assessment/Survey Methodology

Methodology	The methodology used for the assessment/survey (free text).
Survey Unit	The level at which surveys were conducted (e.g. household, village etc)
Mode of Data Collection	Whether interview, questionnaire, focus group, observation or other. More than one option can be selected.
Status of assessment/survey	Whether it is planned, ongoing, completed. The registered user will update this section as the assessment/publication progresses.
Period covered	The start and end dates (month and year)
Frequency	Is the assessment repeated regularly (e.g. once a year, quarterly, yearly. etc.)

❖ Accessing information

Report Availability	Whether the report is publicly available, available on request or restricted.
Type of Information Available	Assessment resources that are available – you can select more than one (questionnaire, data, full report, summary).
Language	Languages of the Assessment/Publication.
Means of distribution	Whether soft/hard copy with the weblink to access. Please upload the file if you choose "soft copy" as a means of distribution
Contact	provide information of focal person of that report

REMEMBER TO UPLOAD YOUR ASSESSMENT/PUBLICATION WITH THE FORM