



# Shelter, NFI and CCCM gap analysis

Myanmar, Quarter 3, 2023



**Shelter Cluster Myanmar**  
ShelterCluster.org  
Coordinating Humanitarian Shelter

**1,219,360**  
people targeted

**780,755**  
people reached

Gap: 36%

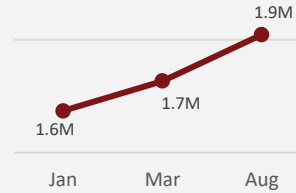
Source: Myanmar Humanitarian Response Plan 2023



**2,017,744**  
total number of IDPs

**53,750**  
displaced to other countries

Source: UNHCR Displacement Overview (13 November 2023)



**\$7.5M**  
received

**\$31.8M**  
committed

**\$124.1M**  
required

**\$84.8M**  
gap

Source: Myanmar Humanitarian Response Plan 2023 | Financial Tracking Service (unocha.org)

## North-West



**17**  
Organizations



**1,058,107**  
Displaced people

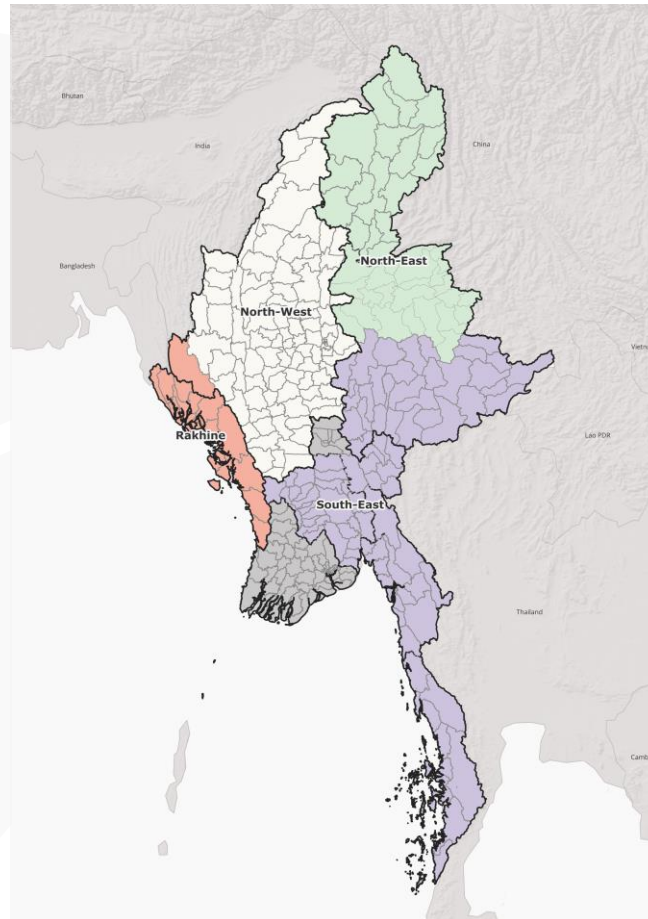
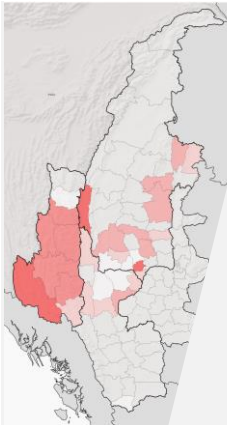
Distribution of Non-Food Items



Emergency Shelter Support



Camp Coordination and Camp Management



## North-East



**15**  
Organizations



**194,957**  
Displaced people

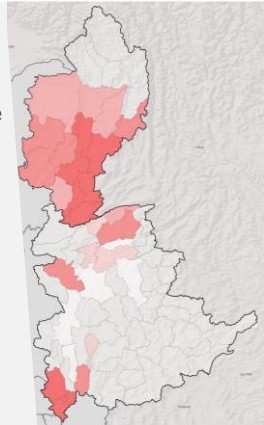
Distribution of Non-Food Items



Emergency Shelter Support



Camp Coordination and Camp Management



## Rakhine



**17**  
Organizations



**216,355**  
Displaced people

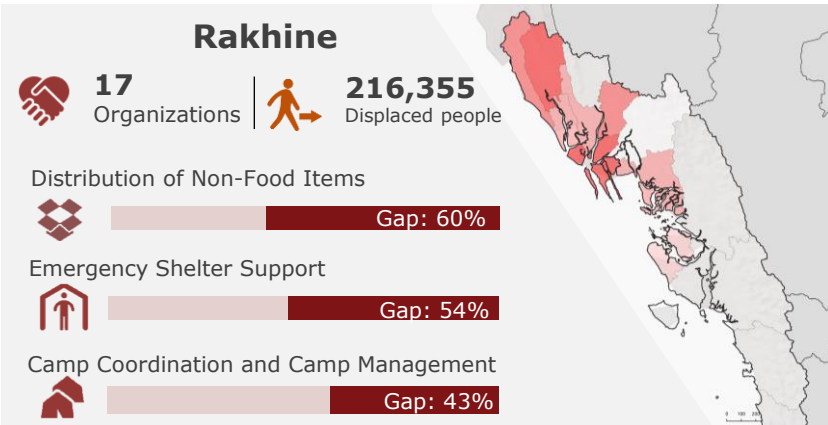
Distribution of Non-Food Items



Emergency Shelter Support



Camp Coordination and Camp Management



## South-East



**11**  
Organizations



**548,325**  
Displaced people

Distribution of Non-Food Items



Emergency Shelter Support



Camp Coordination and Camp Management

