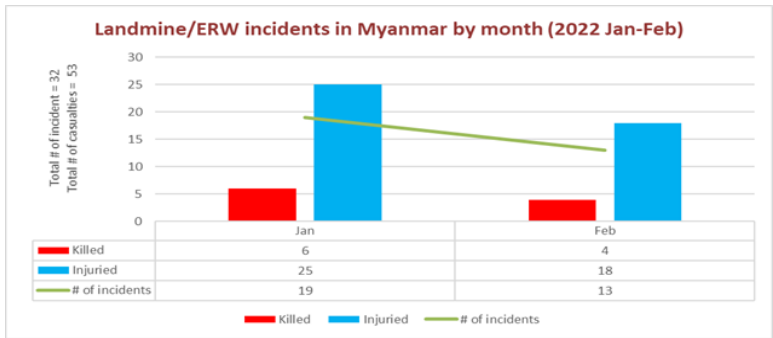


Landmines / ERW Incidents Information (2022)

Overview of incidents and casualties nationwide in 2022 (January-February)

Total incidents		32		
Total Victims		Killed	Injured	Total
		10	43	53
Adult	Total Adult	5	28	33
	Male	4	21	25
	Female	1	7	8
Child	Total Child	5	15	20
	Male	5	13	18
	Female	0	2	2

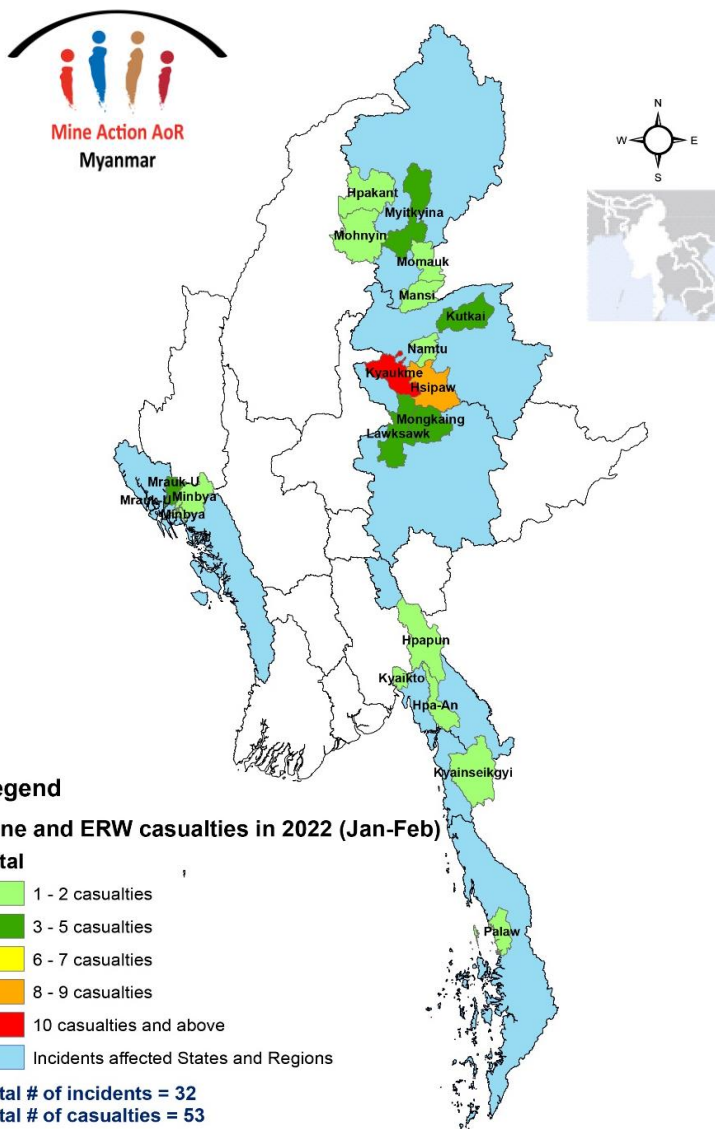


Focus on the States most affected by landmines/ERW in 2022

Shan State (60% of total casualties)

Total incidents		19		
Total Victims		Killed	Injured	Total
		6	26	32
Adult	Total Adult	2	20	22
	Male	2	15	17
	Female	0	5	5
Child	Total Child	4	6	10
	Male	4	5	9
	Female	0	1	1

Incidents affected States/Regions and Townships in 2022



Rakhine State (11% of total casualties)

Total incidents		3		
Total Victims		Killed	Injured	Total
		1	5	6
Adult	Total Adult	1	0	1
	Male	1	0	1
	Female	0	0	0
Child	Total Child	0	5	5
	Male	0	5	5
	Female	0	0	0

Kachin State (15% of total casualties)

Total incidents		5		
Total Victims		Killed	Injured	Total
		1	7	8
Adult	Total Adult	1	6	7
	Male	1	4	5
	Female	0	2	2
Child	Total Child	0	1	1
	Male	0	1	1
	Female	0	0	0

5 other incidents resulting in 7 casualties (13% of total casualties) were also documented in Kayin, Mon and Tanintharyi during the reporting period. There were many explosions and casualties targeted to local administrations and security forces across the country which were not included in this report.

For more information on Mine Action, contact Kim Warren (kiwarren@unicef.org) and Kyaw Win Oo (kwoo@unicef.org) at UNICEF.