

MIMU HDP Nexus 5W Trends - 2020 to 2024

The MIMU HDP Nexus 5W

MIMU’s HDP (Humanitarian, Development and Peace Focus) Nexus “**Who does What Where, When and for Whom**” **database, or 5W**, is a tool tracking the implementation of humanitarian, development and peace focused projects to support coordination, planning and efficient use of resources. MIMU has conducted this exercise regularly in Myanmar since 2008. Information is currently compiled **every six months** based on reports provided voluntarily by contributing agencies.

The MIMU HDP Nexus 5W shows:

- **which organisations (WHO),**
- **are carrying out which activities (WHAT),**
- **in which locations (WHERE),**
- **project status** – whether planned, ongoing or completed (**WHEN**)
- **project beneficiary focus (for WHOM)** – whether focused on IDPs, IDPs and host communities, other vulnerable communities or are aimed to create further resilience and development in communities.

MIMU HDP Nexus 5W Products capture information on the presence of organisations and do not indicate the volume of assistance, the number of beneficiaries, or the extent to which needs are met or unmet.

Summary

The MIMU HDP Nexus 5W Comparison report compares results from August 2020 to August 2024, looking particularly at the impact of events in early 2021 on agencies’ reported activities over time.

2021 saw a significant reduction in the number of reporting agencies and activities compared to the previous round in August 2020:

- **Over 30% reduction in reporting agencies** (from 213 agencies in Aug’ 2020 to 159/163 agencies in May/Oct 2021), mainly among INGOs and NNGOs.
- **33% reduction in the number of projects reported countrywide** (over 200 less projects) in 2021, with reductions mainly in Shan (over 100), Yangon (over 90) and Rakhine (over 60).
- **A significant reduction in the number of activities reported as ongoing** - 43,428 less activities in May 2021, mainly in Tanintharyi (84% reduction), Shan east (58%), Mon (57%), Shan south (55%) and Kayin (50%), and 35,930 less activities in Oct 2021, mainly in Rakhine (18%), Chin and Shan south (11% in each), Tanintharyi (10%), Kayin (9%), Shan north (8%) and Mon (7%).
- **Suspension of activities was significant.** The highest number of suspended activities were reported in May 2021 (19 times higher than in August 2020).

2023 and 2024 has seen increase in reporting agencies and reported activities compared to 2021:

- **About 1,000 more village tracts/towns reported ongoing activities in 2023 and 2024** (83%-78% of Village Tracts (VTs)/Towns around the country), mainly in Agriculture, Education, Food, Health, Mine Action, NFI, Protection and WASH as compared to 2021.
- **Less activities reported as suspended** in 2024 (1-3% of total reported activities) compared to 2021 (10%) – this does not indicate however whether activities have ended/completed or are planned to be resumed later.

Overall, despite the higher number of reporting agencies over the past 12 months:

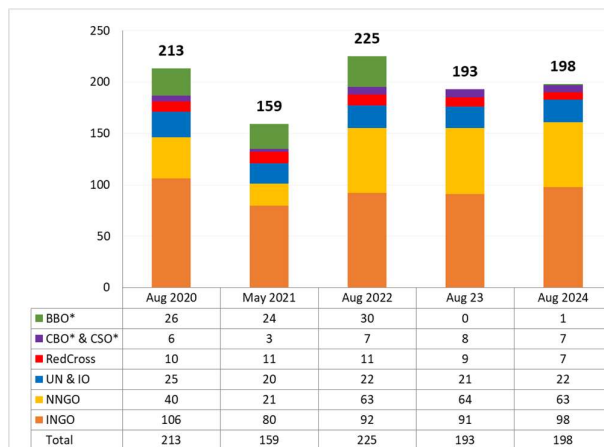
- **More activities were reported as “suspended”** – 1753 more completed/ended activities were found in Aug’ 2024 than Aug’ 2023. This change was particularly noted in Health, Nutrition and Agriculture due to access and security constraints.
- **A lower percentage of total activities were reported as “ongoing”** – 6% less ongoing activities reported as active (from 78% in Aug’ 2023 and 72% in Aug’ 2024)
- **More planned activities except IDP focused projects** (around 2 times increase in IDP and Host Communities, Other Vulnerable Group and Development Focused projects) in Aug’ 2024 compared to Aug’ 2023.

Trend Analysis

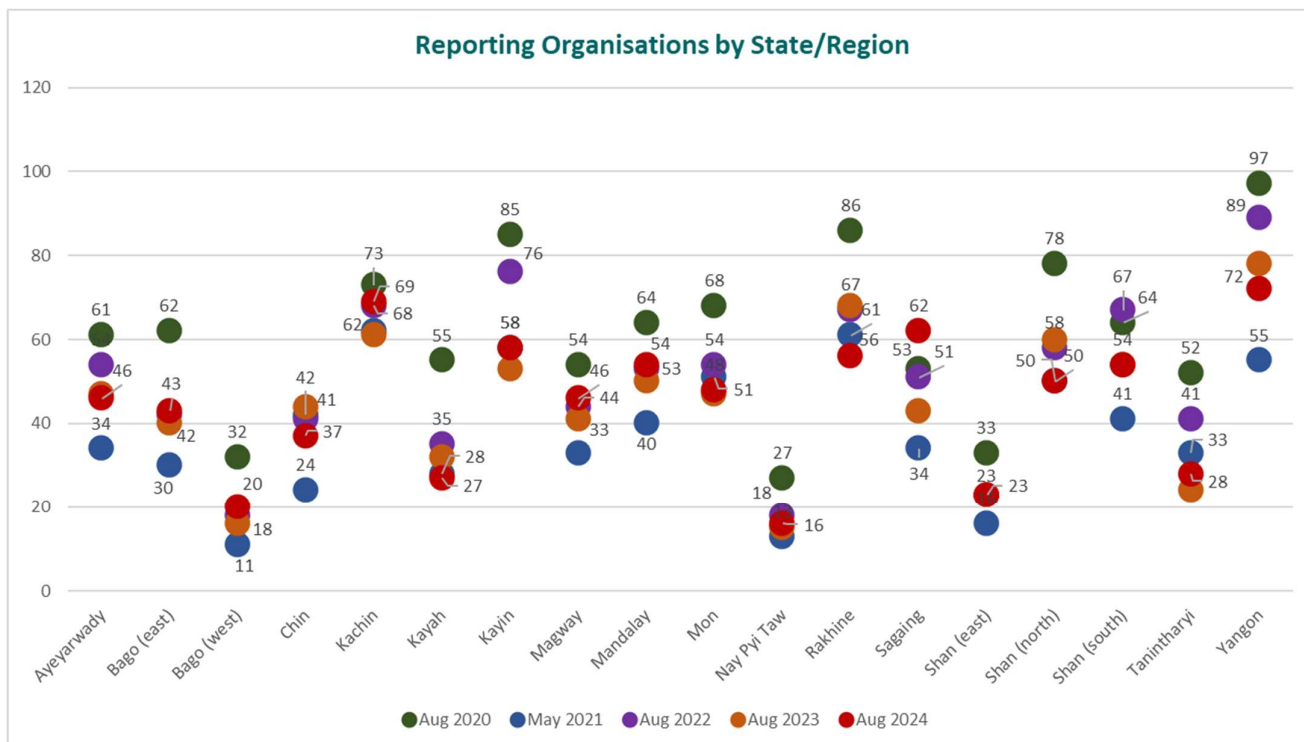
This analysis reviews activities reported to the MIMU HDP Nexus 5W between August 2020 and August 2024. The MIMU HDP Nexus 5W tool captures information on the type, area and status of activities, but does not include the number of people reached, the extent to which needs are met or any financial information. While MIMU currently is not in a position to do such further analytical work, this type of information can possibly be obtained through select additional data collection and consequent analysis by other institutions. Please share your feedback, suggestions and any queries on this analysis with us via info.mimu@undp.org.

Reporting Organizations

5 more organisations reported in Aug' 2024 compared to the Aug' 2023 round. After high levels of reporting through 2019 and 2020, the number of **reporting agencies dropped significantly in 2021 before rising in 2022 and 2023**. **32 less organisations reported in Aug' 2023** compared to the Aug' 2022 round, this is due to mainly border-based agencies who reported activities without implementing partners names and hence around 30 agencies reported as one. Hence particularly, the number of reporting agencies in southeastern Myanmar (Bago east, Kayah, Kayin, Mon, Shan south, Shan east and Tanintharyi) decreased. While there is a slight decrease in number of INGOs, there has been a notable increase in the number of NNGOs contributing to the MIMU HDP Nexus exercise, which is now higher than in 2020.



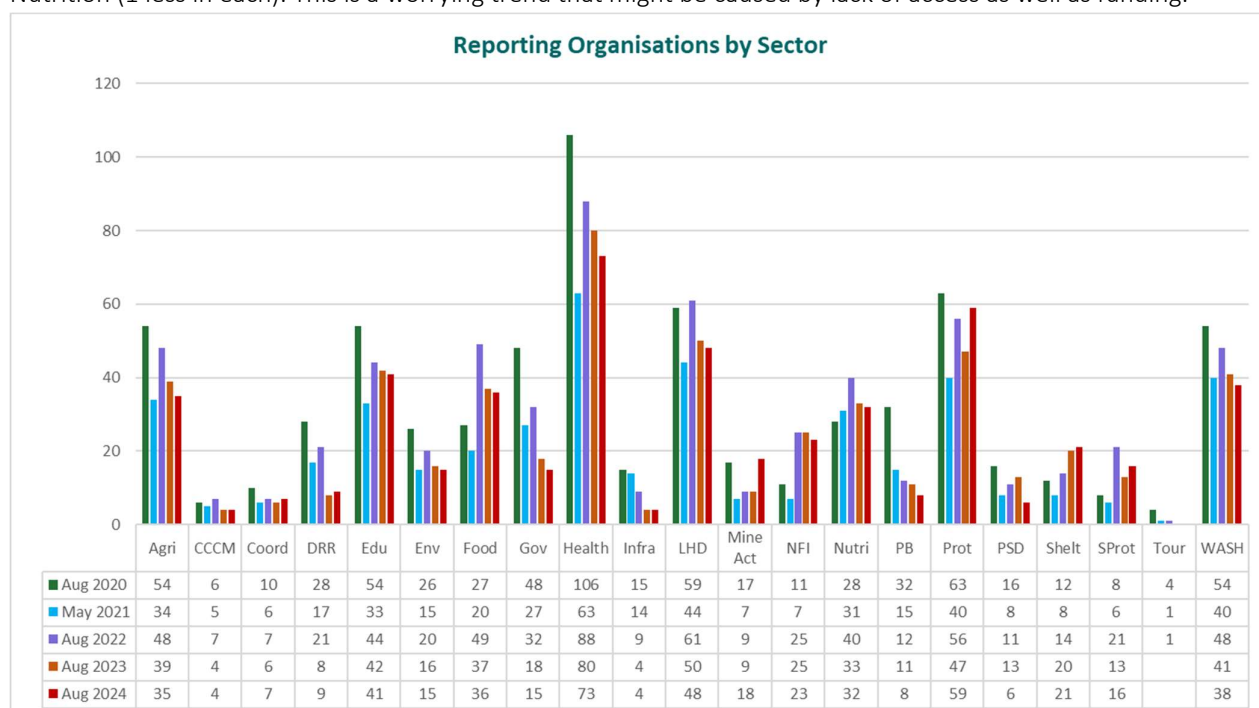
Regarding the number of organisations with ongoing activities by state/region, **Aug' 2020 saw the highest number of organisations in every state and region except Chin, Sagaing and Shan south** compared with the latest round in Aug' 2024. Significantly less organisations were found in Rakhine (30 less organisations), Kayah and Shan north (28 less in each), Kayin (27 less), Yangon (25 less), Tanintharyi (24 less) and Mon (20 less). When making comparison within a year (between Aug 2023 and Aug 2024), significantly more organisations with projects under implementation were found in Sagaing (19 more organisations), Kachin (8 more), Kayin and Magway (5 more in each), Bago west and Mandalay (4 more in each) and Bago east (3 more), while less organisations found in Rakhine (12 less), Shan north (10 less), Chin (7 less), Yanong (6 less) and Kayah (5 less).



Reporting by Sector

Engagement has dropped in 16 sectors in Aug'2024 compared to Aug'2020, particularly interventions related to Governance and Health (33 less organisations with ongoing activities in each), Peace Building/Conflict Prevention (24 less) and Agriculture, Disaster Risk Reduction (19 less in each) and WASH (16 less). By contrast, there was an increase in agencies reporting work in 5 mainly humanitarian-focused sectors - Non-food items (12 more organisations), Food and Shelter (9 more in each), Social Protection (8 more), Nutrition (4 more) and Mine Action (1 more).

The past 12 months (Aug'2023 to Aug'2024) saw an increase in agency engagement in 6 sectors: Protection (12 more reporting organisations), Mine Action (9 more), Social Protection (3 more), coordination, Disaster Risk Reduction and Shelter (1 more in each). Agency engagement was reduced mainly in Health and Private Sector Development (7 less organisations reporting activities), Agriculture (4 less), Governance, Peace Building/Conflict Prevention and WASH (3 less), Livelihoods and Non-Food Item (2 less) and Education, Environment, Food and Nutrition (1 less in each). This is a worrying trend that might be caused by lack of access as well as funding.

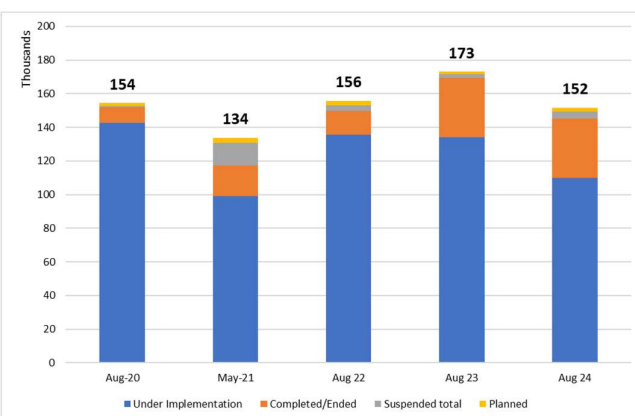


Reporting by Project status

Project Status	Aug 20		May 21		Aug 22		Aug 23		Aug 24	
	No. of Activities per Location	%	No. of Activities per Location	%	No. of Activities per Location	%	No. of Activities per Location	%	No. of Activities per Location	%
Activities including reporting to VT/town level	131,314	85%	119,395	89%	127,226	94%	162,949	94%	138,112	91%
Under Implementation	142,674	92%	99,246	74%	135,758	87%	134,223	78%	109,799	72%
Completed/Ended	9,342	6%	18,135	14%	14,014	9%	35,271	20%	35,494	23%
Suspended due to access/security constraints			7,897	6%	1,921	1%	1,228	1%	2,455	2%
Suspended due to funding constraints			191	0.1%	320	0.2%	121	0.1%	134	0.1%
Suspended for other reasons			5,402	4%	915	0.6%	915	0.5%	1,428	0.9%
Suspended total	674	0.40%	13,490	10%	3,156	2%	2,264	1%	4,017	3%
Planned	1,787	1%	3,022	2%	2,856	2%	1,289	1%	2,393	2%
Grand Total	154,477	100%	133,893	100%	155,784	100%	173047	100%	151703	100%

2024 Aug was notable for the very high number of activities reported as completed (2.8 times higher than Aug'2020), with 35,494 completed activities reported in Aug' 2024 compared to 9,342 in August 2020.

In all Aug' 2022, 2023 and 2024, the number of suspended activities were lower than in May 2021, but still a significant number of activities were suspended compared to Aug' 2020, mainly due to access/security constraints. It is not possible to assess how many of the suspended activities from 2021 and 2022 were ended vs resumed by 2024 due to the changes in project names and locations, however most of the activities reported as suspended in Aug' 2024 were in Rakhine (1,393 activities suspended), Sagaing (721), Shan north (573), and Kachin (474). Note that this reflects the organisation's assessment of project status at the time of MIMU HDP Nexus 5W reporting and may not capture temporary suspensions on the ground.



Over the past 12 months since Aug'2023, a 12 % decrease was noted in overall reported activities per location and less were reported for on-going activities while 2 times more agencies reported suspended activities in Aug' 2024 round. More suspended activities were reported mainly in Rakhine, Sagaing and Kachin while less ongoing activities were noted in Shan north, Rakhine, Kayin, Kachin and Chin.

1,367 village tracts/towns and 46 camps with activities in Aug'2020 no longer had any activities in Aug'2024. VT/town level reductions were mainly in Rakhine (307 less), Shan north (282), Chin (174), Tanintharyi (134), Kachin (93), whereas camp-level interventions were reduced in Shan north (21 less camps), Kachin (13 less) and Rakhine (12 less).

Village tracts/towns with reported activities	Aug 20	May 21	Aug-22	Aug-23	Aug-24
Total No. of Village Tracts (VTs) and Towns in Myanmar	14,304	14,303	14,303	14,303	14,303
VTs and Towns with reported activities – All Sectors	12,490	10,984	12,085	11,875	11,123
% of VTs and Towns with reported activities	87%	77%	85%	83%	78%

8 less nation-wide projects were reported over the past 12 months (Aug'2023 to Aug'2024). In term of number of projects by state/region, the less activities were found mainly in Chin (16 less projects), Rakhine (15 less) and Kayah (10 less). However, 34 more projects were reported in Sagaing Region and 13 more projects were noted in Kayin and Shan.

This is 133 less nation-wide projects in Aug' 2024 than in Aug'2020. Reductions were most significant mainly in Yangon (82 less projects), Rakhine (67 less), Shan (66 less), Kayin (65 less) and Kayah (51 less).

*Number of Nation-wide projects is estimated by a unique count of ongoing overall projects implemented by agencies. Note that one project may be implemented in more than one state/region. In that case, the accumulated number of projects by state/region is not equal to the number of nation-wide projects.

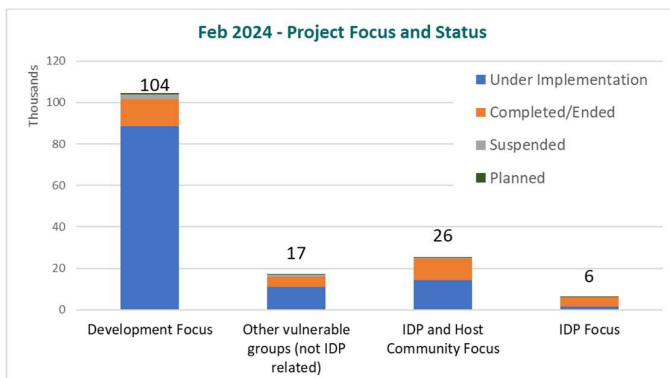
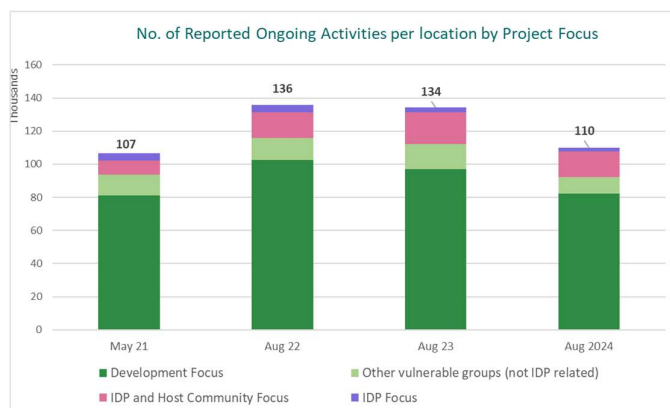
State/ Region	No. of Projects					Difference (4 years since Aug'20)	Difference (past 12 months)
	Aug 2020	May 2021	Aug 2022	Aug 2023	Aug 2024		
Ayeyarwady	120	66	106	92	90	-30	-2
Bago	105	47	73	69	72	-33	3
Chin	83	45	52	54	38	-45	-16
Kachin	173	148	167	159	164	-9	5
Kayah	97	51	58	56	46	-51	-10
Kayin	186	126	134	108	121	-65	13
Magway	104	53	62	61	65	-39	4
Mandalay	128	82	106	101	106	-22	5
Mon	134	101	105	92	103	-31	11
Nay Pyi Taw	53	19	25	24	22	-31	-2
Rakhine	192	136	142	140	125	-67	-15
Sagaing	98	62	96	79	113	15	34
Shan	203	96	132	124	137	-66	13
Tanintharyi	112	72	98	68	67	-45	-1
Yangon	210	119	148	133	128	-82	-5
*Grand Total	814	608	712	689	681	-133	-8

Reporting by Project Focus

Development focused activities made up 67% of activities reported to the Aug'2024 MIMU HDP Nexus 5W, with 14,929 less ongoing activities reported than in Aug'2023. Development-focused activities made up the majority of the Ongoing activities (81%), while 16% of completed/ended activities and 2% of suspended activities were development-focused.

IDP and Host Community focused activities were the second highest, totalling 18% of the total activities reported in Aug'2024, with an 19% decrease since Aug'2023 (3,559 less ongoing activities) despite 10 more reporting agencies. Over the past 12 months (Aug'23-Aug'24), there has, however, been almost 4 times increase in suspended activities within this target group.

Activities with Other Vulnerable Groups (non IDPs) made up almost 11% of reported activities in Aug'2024. The number of reported ongoing activities decreased by 35% with 3 less implementing agencies, but with more activities in other project status (23% more in completed/ended, 1.8 times in planned and 6.8 times in suspended) over the past 12 months.



A key finding is that activities which were solely IDP-focused increased by 23% although ongoing activities were reported in 51 less camps and 114 less village tracts and towns over 12 months, with 5 less implementing agencies. There was also a 23% reduction in ongoing activities but 4.3 times more in planned activities in Aug' 2024 compared to Aug' 2023.

Project Focus	Aug 23 (Ongoing Projects)					Aug 24 (Ongoing Projects)				
	# of Orgs	# of VTs/Towns	# of Villages/Wards	No. of Camps	No. of Activities per location	# of Orgs	# of VTs/Towns	# of Villages/Wards	No. of Camps	No. of Activities per location
Development Focus	133	11,115	37,129		97,188	115	9,931	32,190		82,259
Other vulnerable groups (not IDP related)	79	2,050	4,118		15,135	76	1,973	3,855		9,839
IDP and Host Community Focus	67	2,034	6,281	173	19,123	77	2,172	4,046	160	15,564
IDP Focus	45	391	616	174	2,777	40	277	417	123	2,137
Grand Total	181	11,875	41,152	206	134,223	183	11,123	35,836	170	109,799

Reporting by Sector and Area

As of Aug'2024, less Village tracts/towns were reached in 15 sectors compared to 4 years earlier in Aug'2020 – these included Livelihoods (5,381 less village tracts/towns in Aug'2024), WASH (1,684 less), Health (1,822 less), Environment (1,252 less), Governance (560 less), Education (454 less) and infrastructure (416 less). At the same time, the number of VTs/Towns with ongoing activities increased in 6 sectors, namely Food (activities in 308 more village tracts/towns), Mine Action (226 more), Nutrition (230 more), Agriculture (215 more), NFI (64 more) and Shelter (34 more) compared to Aug' 2020 HDP Nexus 5W round.

The reach decreased particularly in 15 sectors over the past 12 months – mainly in Health (733 less village tracts/towns), Nutrition (642 less), Agriculture (430 less), Education (275 less) and Environment (230 less).

Ongoing activities were reported in 170 previously-established IDP camps¹ in Aug'2024. This was 46 less camps than 4 years previously in August 2020 and 36 less camps than 12 months ago, however the past 12 months saw an increase in reported activities in 4 sectors in the previously-established camps, most notably in the Disaster Risk Reduction, Infrastructure, Shelter and Social Protection sectors whereas a decrease mainly in CCCM, Nutrition and Education.

¹ The MIMU HDP Nexus 5W uses the CCCM camp list which included camps that were established prior to 2021 in Rakhine, Kachin and Shan States in this round.

No. VTs/Towns and Camps with Ongoing activities by State/Region

State/Region	VTs and Towns					Camps				
	Aug 2020	May 2021	Aug 2022	Aug 2023	Aug 2024	Aug 2020	May 2021	Aug 2022	Aug 2023	Aug 2024
Ayeyarwady	1,952	1,933	1,943	1,890	1,892					
Bago (East)	532	455	564	604	609					
Bago (West)	639	588	630	658	666					
Chin	485	482	481	457	311					
Kachin	488	406	502	484	395	135	132	136	130	122
Kayah	84	72	84	62	65					
Kayin	394	368	394	394	353					
Magway	1,412	1,233	1,260	1,277	1,344					
Mandalay	1,234	1,113	1,182	1,235	1,214					
Mon	390	258	384	384	312					
Nay Pyi Taw	167	136	157	162	165					
Rakhine	966	814	946	817	659	46	42	32	35	34
Sagaing	1,641	1,451	1,602	1,554	1,559					
Shan (East)	155	127	130	134	135					
Shan (north)	716	618	661	743	434	35	29	35	41	14
Shan (South)	393	312	370	279	316					
Tanintharyi	285	134	244	209	151					
Yangon	557	484	551	532	543					
Grand Total	12,490	10,984	12,085	11,875	11,123	216	203	203	206	170
% of total VTs/Towns and Camps in Myanmar	87%	77%	85%	83%	78%	94%	89%	89%	99%	75%

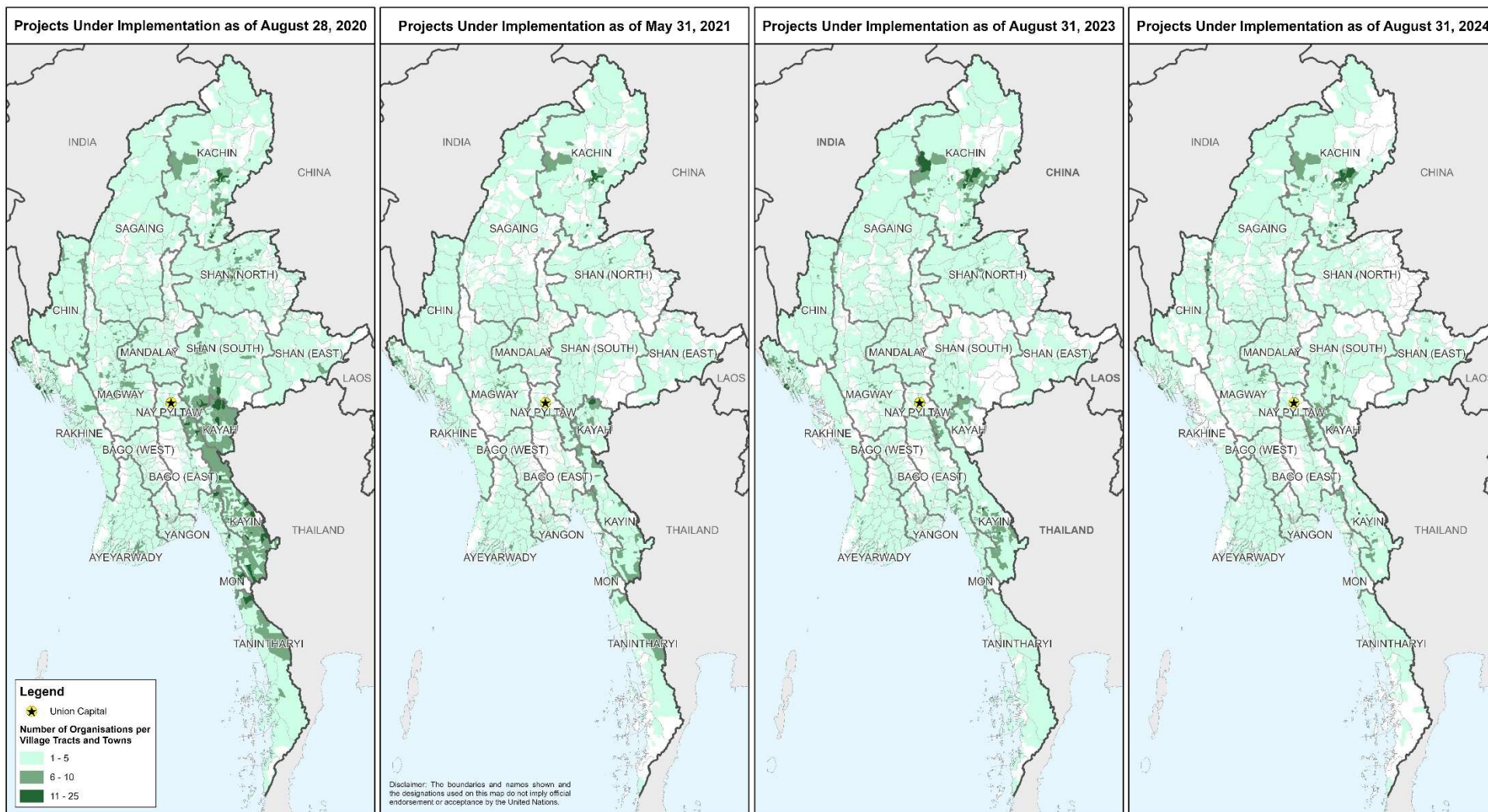
No. VTs/Towns and Camps with Ongoing activities by Sector

Sector	VTs and Towns					Camps				
	Aug 2020	May 2021	Aug 2022	Aug 2023	Aug 2024	Aug 2020	May 2021	Aug 2022	Aug 2023	Aug 2024
Agriculture	7,668	6,932	7,938	8,313	7,883	26	23	6	4	
CCCM	163	81	56	5	32	163	154	189	48	10
Coordination	99	77	98	55	52					
Disaster Risk Reduction	254	206	245	122	125	11	3	2	1	4
Education	2,169	556	1,668	1,990	1,715	62	79	88	59	34
Environment	1,349	715	317	327	97					
Food	293	378	471	680	601	152	144	67	134	120
Governance	950	464	472	229	390	7		2	4	4
Health	5,468	3,398	4,631	4,319	3,586	161	111	131	119	101
Infrastructure	429	120	32	49	13		8	2		2
Livelihoods	6,719	5,394	5,496	1,522	1,338	118	97	84	61	58
Mine Action	504	337	578	865	730	25	23	30	64	58
Non-Food Items	106	47	105	245	170	37	19	8	48	46
Nutrition	939	1,106	1,221	1,811	1,169	151	135	113	157	131
Peace Building/ Conflict Prevention	214	61	122	36	62	98	84	6	9	9
Private Sector Development	95	21	84	93	45			35	41	33
Protection	1,837	1,165	2,097	1,763	1,691	191	140	170	129	108
Responsible Tourism	22									
Shelter	120	83	56	215	154	157	155	44	15	16
Social Protection	73	28	82	81	72	19	16	15	2	4
WASH	2,359	482	733	645	675	127	151	123	64	61

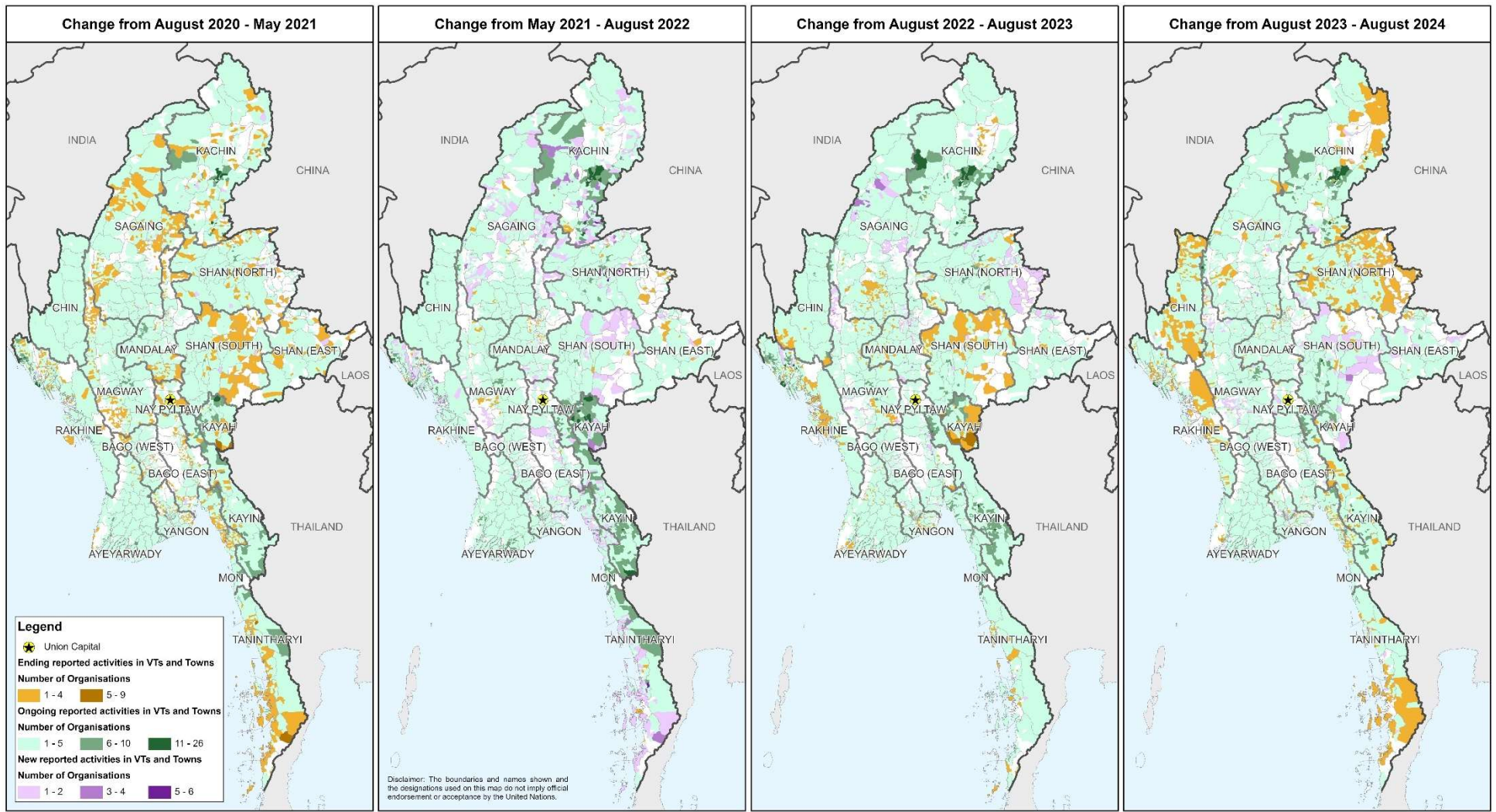
For more information or clarification, see [MIMU's HDP Nexus 5W products](#) and interactive dashboards or contact us: Info.mimu@undp.org

Number of Organizations reporting Projects Under Implementation by Village Tract

These maps reflect the changing concentration of reporting organisations by area from 2020 to 2024. Note that this does not indicate the level of need or vulnerability and whether needs are met.



Change in Reported Activities by Village Tract



The maps below show trends over time in terms of village tracts with newly established activities (purple colour), ongoing activities (green colour) and recently ended activities (orange colour).