

# MIMU HDP Nexus 5W Trends - 2020 to 2024

## The MIMU HDP Nexus 5W

MIMU's HDP (Humanitarian, Development and Peace Focus) Nexus **"Who does What Where, When and for Whom"** database, or **5W**, is a tool tracking the implementation of humanitarian, development and peace focused projects to support coordination, planning and efficient use of resources. MIMU has conducted this exercise regularly in Myanmar since 2008. Information is currently compiled **every six months** based on reports provided voluntarily by contributing agencies.

The MIMU HDP Nexus 5W shows:

- **which organizations (WHO),**
- **are carrying out which activities (WHAT),**
- **in which locations (WHERE),**
- **project status** – whether planned, ongoing or completed (**WHEN**)
- **project beneficiary focus (for WHOM)** – whether focused on IDPs, IDPs and host communities, other vulnerable communities or are aimed to create further resilience and development in communities.

MIMU HDP Nexus 5W Products capture information on the presence of organisations and do not indicate the volume of assistance, the number of beneficiaries, or the extent to which needs are met or unmet.

## Summary

The MIMU HDP Nexus 5W Comparison report compares results from August 2020 to February 2024, looking particularly at the impact of events in early 2021 on agencies' reported activities over time.

**2021 saw a significant reduction in the number of reporting agencies and activities compared to the previous round in August 2020:**

- **Over 30% reduction in reporting agencies** (from 213 agencies in Aug' 2020 to 159/163 agencies in May/Oct 2021), mainly INGOs and NNGOs.
- **33% reduction in the number of projects reported countrywide** (over 200 less projects) in 2021, with reductions mainly in Shan (over 100), Yangon (over 90) and Rakhine (over 60).
- **A significant reduction in the number of activities reported as ongoing** - 43,428 less activities in May 2021, mainly in Tanintharyi (84% reduction), Shan east (58%), Mon (57%), Shan south (55%) and Kayin (50%), and 35,930 less activities in Oct 2021, mainly in Rakhine (18%), Chin and Shan south (11% in each), Tanintharyi (10%), Kayin (9%), Shan north (8%) and Mon (7%).
- **Suspension of activities was significant.** The highest number of suspended activities were reported in May 2021 (19 times higher than in August 2020).

**2023 and 2024 has seen increase in reporting agencies and reported activities compared to 2021:**

- **About 1,000 more village tracts/towns reported ongoing activities in 2023 and 200 more in 2024** (86%-78% of VTs/Towns around the country), mainly in Agriculture, Education, Health and Protection as compared to 2021.
- **Less activities reported as suspended** in 2024 (2% of total reported activities) compared to 2021 (around 10%) and Feb' 2023 (1%) – this does not indicate however whether activities have ended/completed or resumed.

**Overall, despite the higher number of reporting agencies over the past 12 months:**

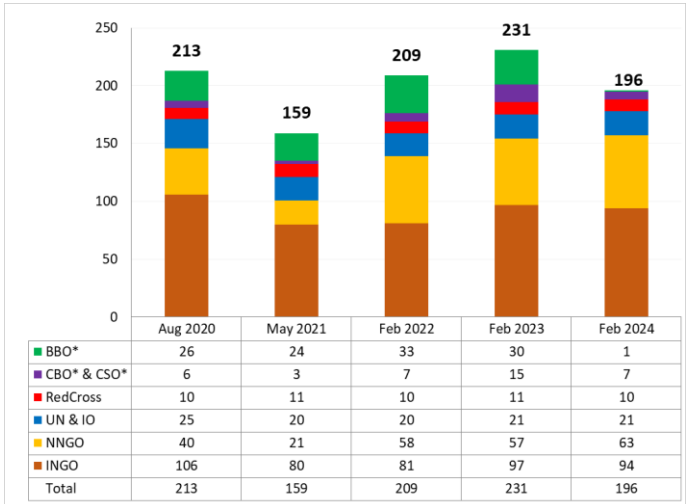
- **More activities were reported as "completed/ended"** – 6,476 more completed/ended activities were found in Feb' 2024 than Feb' 2023. This change was particularly noted within **Livelihoods activities, where** one agency ended a project with a large number of micro credit activities in June 2023.
- **A lower percentage of total activities were reported at VTs/Towns level as "ongoing"** – 8% less ongoing activities reported as active (from 86% in Feb' 2023 and 78% in Feb' 2024)
- **More suspended activities focused on Other Vulnerable Groups and IDP Focus** (nearly 4 times increase in each group) in Feb' 2024 compared to Feb' 2023.

# Trend Analysis

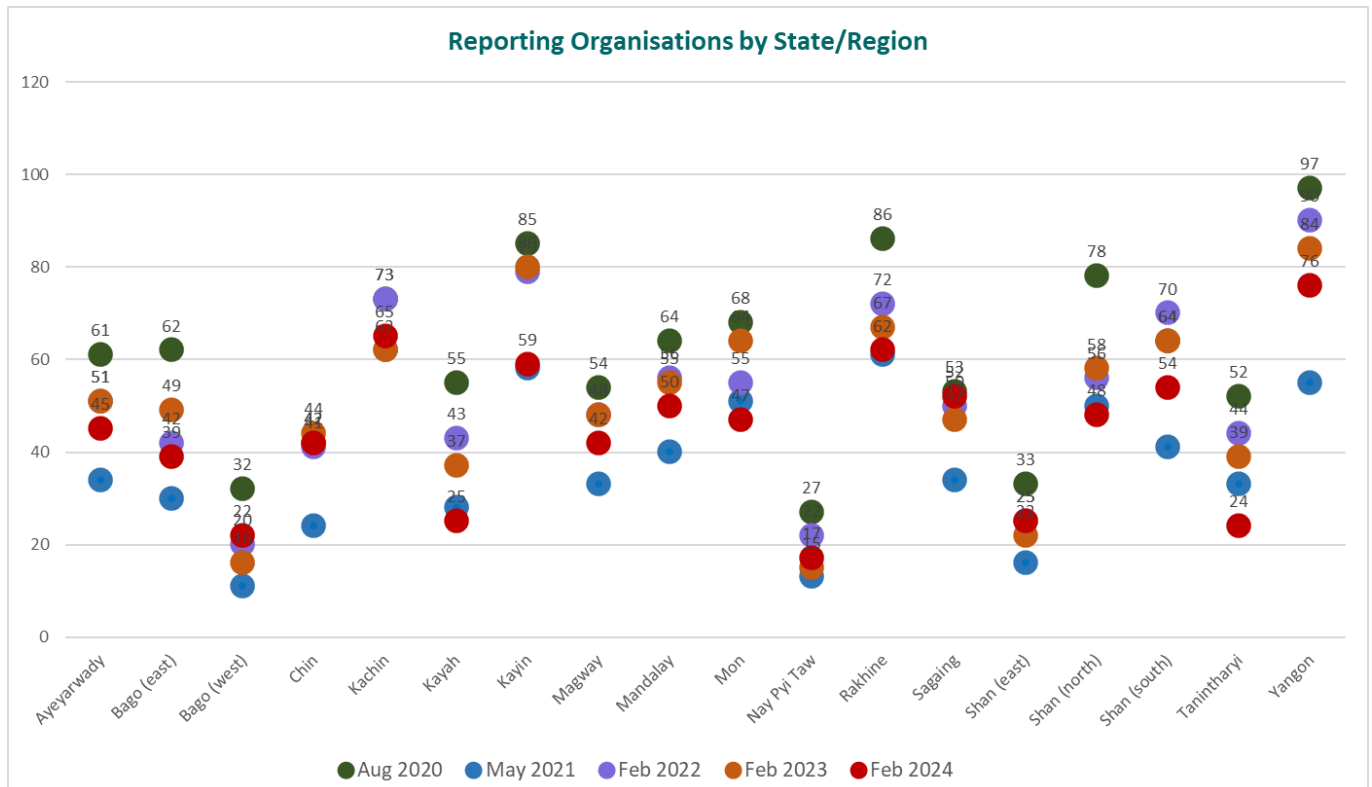
This analysis reviews activities reported to the MIMU HDP Nexus 5W between August 2020 and February 2024. The MIMU HDP Nexus 5W tool captures information on the type, area and status of activities, but does not include the number of people reached, the extent to which needs are met or any financial information. While MIMU currently is not in a position to do such further analytical work, this type of information can possibly be obtained through select additional data collection and consequent analysis by other institutions. Please share your feedback, suggestions and any queries on this analysis with us via [info.mimu@undp.org](mailto:info.mimu@undp.org)

## Reporting Organizations

After high levels of reporting through 2019 and 2020, the number of reporting agencies dropped significantly in 2021 before rising in Feb' 2022 and 2023. 35 less organisations reported in Feb' 2024 compared to previous round in Feb' 2023, this is due to mainly border-based agencies who reported activities without implementing partners names and hence reported as one. Hence particularly, the number of reporting agencies in southeastern Myanmar (Bago east, Kayah, Kayin, Mon, Shan south, Shan east and Tanintharyi) decreased. While there is a slight decrease in number of INGOs, there has been a notable increase in the number of NNGOs, which is now higher than in 2020.



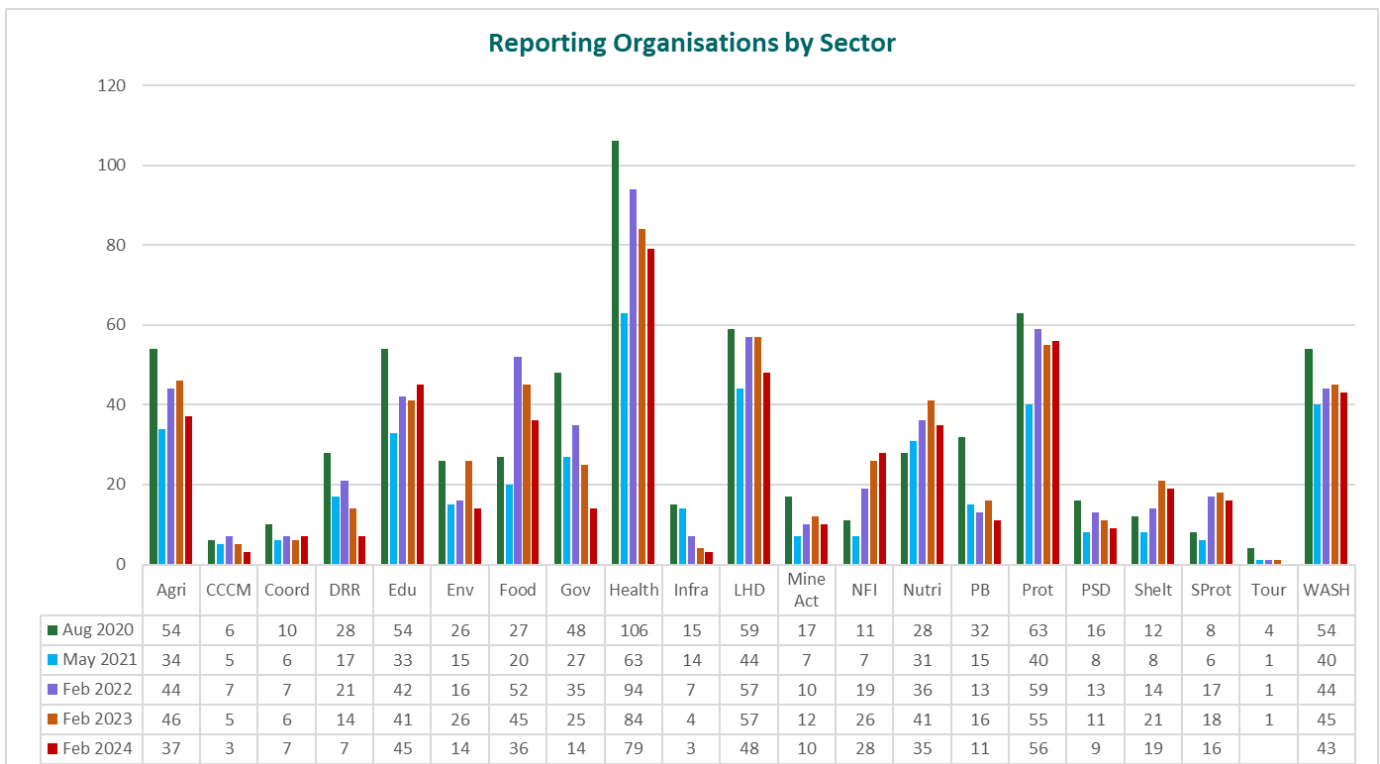
Regarding the number of organisations with ongoing activities by state/region, Aug' 2020 saw the highest number of organisations in every state and region except Chin compared with the latest round in Feb' 2024. Significantly less organisations were found in Shan north and Kayah (30 less organisations in each), Tanintharyi (28 less), Kayin (26 less), Rakhine (24 less), Bago east (23 less) and Yangon (21 less). Compared to Feb' 2023, less organisations with projects under implementation were found in all state/region except Bago west (6 more organisations), Sagaing (5 more), Kachin and Shan east (3 more) and Nay Pyi Taw (2 more).



## Reporting by Sector

Engagement has dropped in 16 sectors in Feb'2024 compared to Aug'2020, particularly interventions related to Governance (34 less organisations with ongoing activities), Health (27 less), Peace Building/Conflict Prevention and Disaster Risk Reduction (21 less in each). By contrast, there was an increase in agencies reporting work in 5 mainly humanitarian-focused sectors - Non-food items (17 more organisations), Food (9 more), Social Protection (8 more), Nutrition and Shelter (7 more in each).

The past 12 months (Feb'2023 to Feb'2024) saw an increase in agency engagement in 4 sectors: Education (4 more reporting organisations), Non-food items (2 more), Protection (1 more) and coordination (1 more). Agency engagement was reduced mainly in Environment (12 less organisations reporting activities), Governance (11 less), Agriculture, Food and Livelihoods (9 less), Disaster Risk Reduction (7 less), Nutrition (6 less) and Health and Peace Building/ Conflict Prevention (5 less in each). This is a worrying trend that might be caused by lack of access as well as funding.

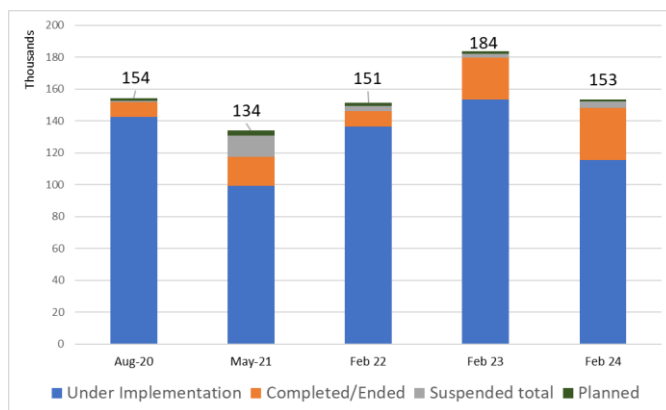


## Reporting by Project status

Project Status	Aug 20		May 21		Feb-22		Feb 23		Feb 24	
	No. of Activities per Location	%	No. of Activities per Location	%	No. of Activities per Location	%	No. of Activities per Location	%	No. of Activities per Location	%
Activities including reporting to VT/town level	131,314	85%	119,395	89%	127,326	84%	168,539	92%	139,837	91%
Under Implementation	142,674	92%	99,246	74%	136,446	90%	153,524	83%	115,523	75%
Completed/Ended	9,342	6%	18,135	14%	9,762	6%	26,376	14%	32,852	21%
Suspended due to access/security constraints			7,897	6%	2,543	2%	1,296	1%	1,191	1%
Suspended due to funding constraints			191	0.1%	163	0.1%	260	0.1%	187	0.1%
Suspended for other reasons			5,402	4%	564	0%	881	0.5%	2,424	1.6%
<b>Suspended total</b>	674	0.40%	13,490	10%	3,270	2%	2,437	1%	3,802	2%
Planned	1,787	1%	3,022	2%	1,816	1%	1,616	1%	1,136	1%
<b>Grand Total</b>	<b>154,477</b>	<b>100%</b>	<b>133,893</b>	<b>100%</b>	<b>151,294</b>	<b>100%</b>	<b>183,953</b>	<b>100%</b>	<b>153,313</b>	<b>100%</b>

2023 was notable for the very high number of activities reported as completed (2.7 times higher than Aug'2020), with 32,852 completed activities reported in Feb' 2024 compared to 9,342 in August 2020.

In all Feb' 2022, 2023 and 2024, the number of suspended activities were lower than in May 2021, but still a significant number of activities were suspended compared to Aug' 2020, mainly due to access/security constraints except Feb' 2024, which found more suspended activities due to other reasons. It is not possible to assess how many of the suspended activities from 2021 and 2022 were ended vs resumed by 2024 due to the changes in project names and locations, however most of the activities reported as suspended in Feb' 2024 were in Rakhine (1,815 activities suspended), Sagaing (517), Shan north (384), and Kachin (342). Note that this reflects the organisation's assessment of project status at the time of MIMU HDP Nexus 5W reporting and may not capture temporary suspensions on the ground.



A particularly high number of activities have been completed/ended over the past 12 months since Feb'2022 (26,376 activities, or 14% of the total activities reported to the MIMU HDP Nexus 5W in Feb' 2023 mainly in Health, WASH, Protection and Nutrition and 32,852 activities, or 21% in Feb' 2024 mainly in Agriculture, Health, Protection, Education and WASH.)

1306 village tracts/towns and 39 camps with activities in Aug'2020 no longer had any activities in Feb'2024. VT/town level reductions were mainly in Rakhine (265 less), Magway (221), Chin (181), Tanintharyi (143), Shan north (140), Sagaing (111), and Shan south (96), whereas camp-level interventions were reduced in Shan north (19 less camps), Rakhine (13 less) and Kachin (7 less).

Village tracts/towns with reported activities	Aug 20	May 21	Feb 22	Feb 23	Feb 24
Total No. of Village Tracts (VTs) and Towns in Myanmar	14,304	14,303	14,303	14,303	14,303
VTs and Towns with reported activities – All Sectors	12,490	10,984	11,887	12,346	11,184
% of VTs and Towns with reported activities	87%	77%	83%	86%	78%

54 less nation-wide projects were reported over the past 12 months (Feb'2023 to Feb'2024). In term of number of projects by state/region, the majority of the 54 were in Tanintharyi (26 less projects) and Kayah (17 less).

This is still 134 less nation-wide projects in Feb' 2024 than in Aug'2020. Reductions were most significant mainly in Yangon (79 less projects), Shan (64 less), Kayin (62 less), Rakhine (54 less), Kayah (53 less), Tanintharyi (47 less) and Magway (46 less).

\*Number of Nation-wide projects is estimated by a unique count of ongoing overall projects implemented by agencies. Note that one project may be implemented in more than one state/region. In that case, the accumulated number of projects by state/region is not equal to the number of nation-wide projects.

State/Region	No. of Projects					Difference (3 <sup>1/2</sup> years since Aug'20)	Difference (past 12 months)
	Aug 2020	May 2021	Feb 2022	Feb 2023	Feb 2024		
Ayeyarwady	120	66	78	102	89	-31	-13
Bago	105	47	58	78	69	-36	-9
Chin	83	45	38	54	49	-34	-5
Kachin	173	148	166	164	162	-11	-2
Kayah	97	51	61	61	44	-53	-17
Kayin	186	126	138	136	124	-62	-12
Magway	104	53	63	65	58	-46	-7
Mandalay	128	82	92	108	99	-29	-9
Mon	134	101	103	107	102	-32	-5
Nay Pyi Taw	53	19	23	24	25	-28	1
Rakhine	192	136	134	145	138	-54	-7
Sagaing	98	62	69	87	96	-2	9
Shan	203	96	122	142	139	-64	-3
Tanintharyi	112	72	82	91	65	-47	-26
Yangon	210	119	141	141	131	-79	-10
<b>Grand Total</b>	<b>814</b>	<b>608</b>	<b>665</b>	<b>734</b>	<b>680</b>	<b>-134</b>	<b>-54</b>

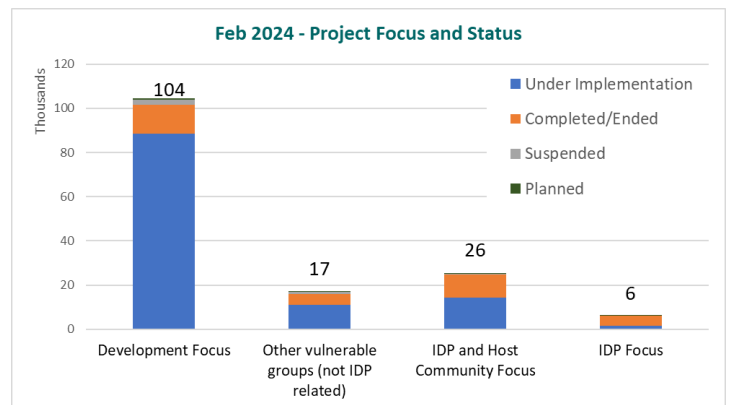
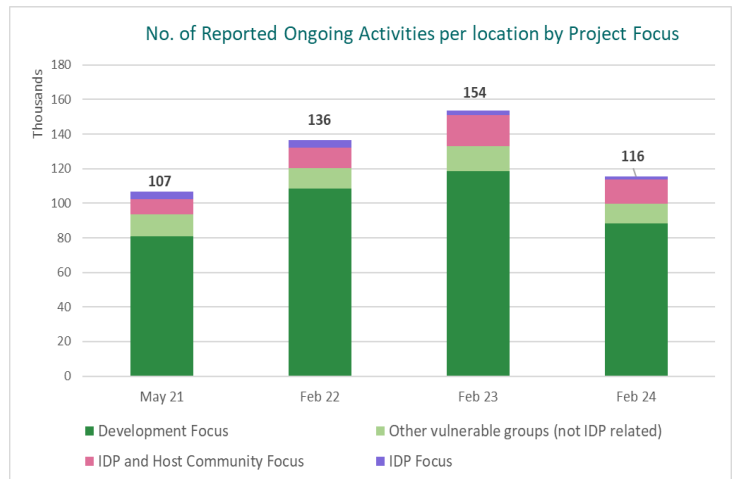
## Reporting by Project Focus

Development focused activities made up 68% of activities reported to the Feb'2024 MIMU HDP Nexus 5W, with 27,741 less activities reported than in Feb'2023. Development-focused activities also made up the majority of the Ongoing activities (85%), followed by completed/ended activities (13%) and suspended activities (2%).

IDP and Host Community focused activities were the second highest, totalling 17% of the total activities reported in Feb'2024, with an 26% decrease since Feb'2023 (3,623 less activities) despite 8 more reporting agencies. Over the past 2 years (Feb'22-Feb'24), there has, however, been a 22% increase in ongoing activities with this target group.

Activities with Other Vulnerable Groups (non IDPs) made up almost 11% of reported activities in Feb'2024. The number of reported ongoing activities decreased by 29% with 12 less implementing agencies, while a 62% decrease in completed activities but 4 times more suspended activities over the past 12 months.

A key finding is that activities which were solely IDP-focused increased by just 4% although ongoing activities were reported in 3 less camps and 230 less village tracts and towns over 12 months, with 24 less number of implementing agencies. There was also a 61% reduction in ongoing activities but 5 times more in suspended activities in Feb' 2024 compared to Feb' 2023.



Project Focus	Feb 23 (Ongoing Projects)					Feb 24 (Ongoing Projects)				
	# of Orgs	# of VTs/Towns	# of Villages/Wards	No. of Camps	No. of Activities per location	# of Orgs	# of VTs/Towns	# of Villages/Wards	No. of Camps	No. of Activities per location
Development Focus	150	11,660	41,501		118,532	118	10,006	33,098		88,455
Other vulnerable groups (not IDP related)	89	2,542	5,411		14,448	77	2,135	3,841		11,189
IDP and Host Community Focus	63	2,020	5,265	171	17,801	71	1,869	3,609	164	14,178
IDP Focus	64	452	557	162	2,743	40	204	327	159	1,701
<b>Grand Total</b>	<b>214</b>	<b>12,346</b>	<b>45,410</b>	<b>189</b>	<b>153,524</b>	<b>178</b>	<b>11,184</b>	<b>36,570</b>	<b>177</b>	<b>115,523</b>

## Reporting by Sector and Area

As of Feb'2024, less Village tracts/towns were reached in 14 sectors compared to 3 years earlier in Aug'2020 – these included Livelihoods (5,197 less village tracts/towns in Aug'2023), WASH (1,714 less), Health (1,149 less), Environment (1,022 less), Governance (721 less) and infrastructure (380 less). At the same time, the number of VTs/Towns with ongoing activities increased in 7 sectors, namely Nutrition (activities in 872 more village tracts/towns), Agriculture (645 more), Food (387 more), Mine Action (361 more), NFI (139 more), Shelter (95 more) and Social Protection (8 more) compared to Aug' 2020 HDP Nexus 5W round.

The reach increased particularly in 10 sectors over the past 12 months – mainly in Nutrition (590 more village tracts/towns), Agriculture (375 more), Education (322 more), Mine Action (287 more) and Food (209 more).

Ongoing activities were reported in 206 previously-established IDP camps<sup>1</sup> in Aug'2023. This was 10 less camps than 3 years previously in August 2020 and 3 more camps than 12 months ago, however the past 12 months saw an increase in reported activities in 7 sectors in the previously-established camps, most notably in the Food, Nutrition, NFI and Mine Action sectors.

<sup>1</sup> The MIMU HDP Nexus 5W uses the CCCM camp list which included camps that were established prior to 2021 in Rakhine, Kachin and Shan States in this round.

## No. VTs/Towns and Camps with Ongoing activities by State/Region

State/Region	VTs and Towns					Camps				
	Aug 2020	May 2021	Feb 2022	Feb 2023	Feb 2024	Aug 2020	May 2021	Feb 2022	Feb 2023	Feb 2024
Ayeyarwady	1,952	1,933	1,943	1,944	1,893					
Bago (East)	532	455	511	603	609					
Bago (West)	639	588	621	655	666					
Chin	485	482	481	481	304					
Kachin	488	406	479	494	443	135	132	140	127	128
Kayah	84	72	86	85	69					
Kayin	394	368	394	394	341					
Magway	1,412	1,233	1,249	1,314	1,191					
Mandalay	1,234	1,113	1,112	1,244	1,236					
Mon	390	258	384	384	323					
Nay Pyi Taw	167	136	154	161	165					
Rakhine	966	814	901	932	701	46	42	30	32	33
Sagaing	1,641	1,451	1,577	1,619	1,530					
Shan (East)	155	127	129	131	149					
Shan (north)	716	618	714	724	576	35	29	28	30	16
Shan (South)	393	312	374	389	297					
Tanintharyi	285	134	232	235	142					
Yangon	557	484	546	557	549					
<b>Grand Total</b>	<b>12,490</b>	<b>10,984</b>	<b>11,887</b>	<b>12,346</b>	<b>11,184</b>	<b>216</b>	<b>203</b>	<b>198</b>	<b>189</b>	<b>177</b>
<b>% of total VTs/Towns and Camps in Myanmar</b>	<b>87%</b>	<b>77%</b>	<b>83%</b>	<b>86%</b>	<b>78%</b>	<b>94%</b>	<b>89%</b>	<b>89%</b>	<b>77%</b>	<b>76%</b>

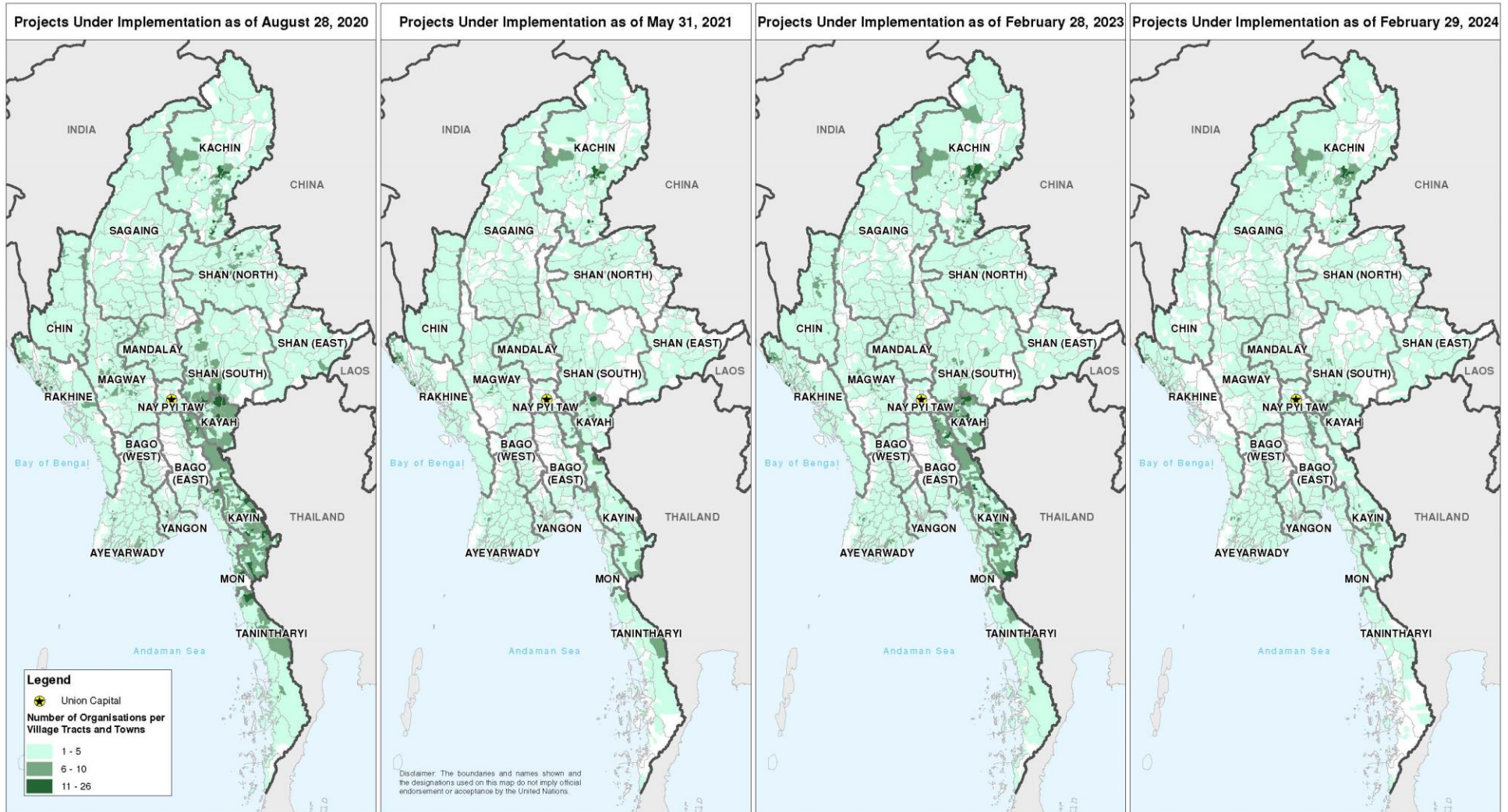
## No. VTs/Towns and Camps with Ongoing activities by Sector

Sector	VTs and Towns					Camps				
	Aug 2020	May 2021	Feb 2022	Feb 2023	Feb 2024	Aug 2020	May 2021	Feb 2022	Feb 2023	Feb 2024
Agriculture	7,668	6,932	7,729	8,228	7,944	26	23	4	23	4
CCCM	163	81	90	12	5	163	154	118	164	9
Coordination	99	77	100	57	79					
Disaster Risk Reduction	254	206	208	162	71	11	3	3	3	
Education	2,169	556	1,456	1,965	990	62	79	108	130	28
Environment	1,349	715	150	380	186				1	
Food	293	378	401	508	453	152	144	123	149	110
Governance	950	464	468	314	372	7		8	7	4
Health	5,468	3,398	4,398	4,460	3,836	161	111	128	141	99
Infrastructure	429	120	27	29	8		8	1	8	2
Livelihoods	6,719	5,394	5,407	5,715	1,393	118	97	88	78	46
Mine Action	504	337	635	951	459	25	23	46	87	65
Non-Food Items	106	47	129	226	259	37	19	21	51	47
Nutrition	939	1,106	1,079	2,045	1,682	151	135	146	165	142
Peace Building/ Conflict Prevention	214	61	124	96	85	98	84	43	21	15
Private Sector Development	95	21	85	108	75			34	42	37
Protection	1,837	1,165	1,876	2,166	1,749	191	140	160	184	116
Responsible Tourism	22									
Shelter	120	83	125	87	144	157	155	174	39	15
Social Protection	73	28	65	65	174	19	16	14		
WASH	2,359	482	720	747	760	127	151	135	155	62

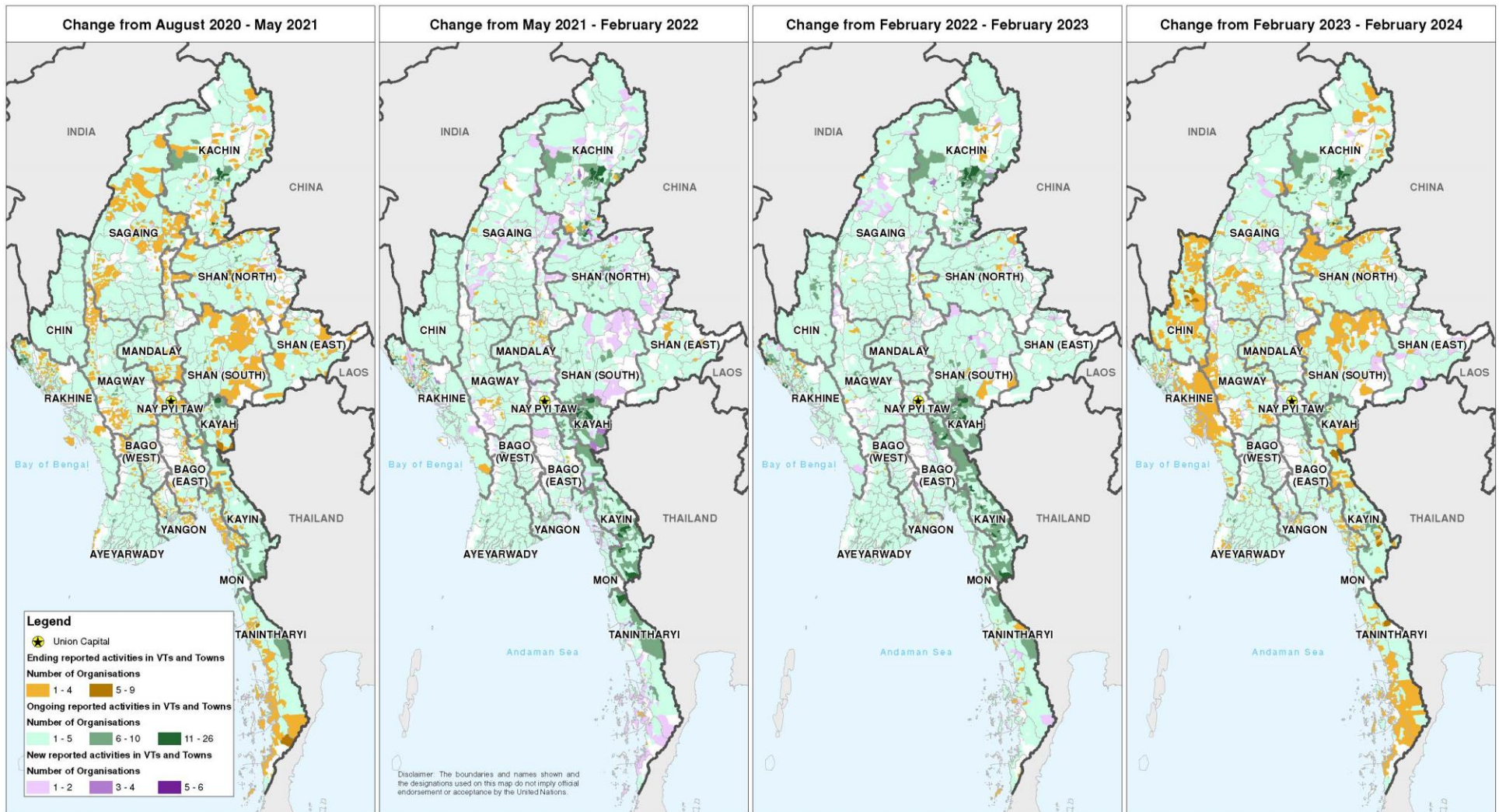
For more information or clarification, see [MIMU's HDP Nexus 5W products](#) and interactive dashboards or contact us: [Info.mimu@undp.org](mailto:Info.mimu@undp.org)

## Number of Organizations reporting Projects Under Implementation by Village Tract

These maps reflect the changing concentration of reporting organisations by area from 2020 to 2024. Note that this does not indicate the level of need or vulnerability and whether needs are met.



## Change in Reported Activities by Village Tract



The maps below show trends over time in terms of village tracts with newly established activities (purple colour), ongoing activities (green colour) and recently ended activities (orange colour).