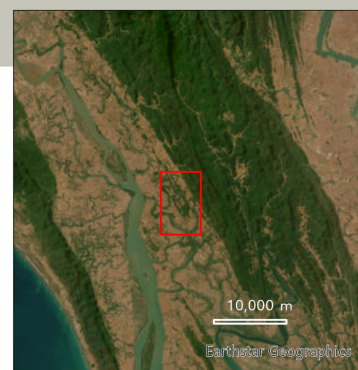


DAMAGE ASSESSMENT IN RAKHINE STATE, MYANMAR



As Observed by Pleiades Satellite on May 18, 19 and 21, 2023

DAMAGED BUILDINGS



This map shows the detected damaged buildings in Sa Par Htar (194 damaged buildings) and La Mone Taing (120 damaged buildings) Villages, Rathedaung Town, Sittwe Districts, Rakhine State, Myanmar on May 18, 19 and 21, 2023, due to heavy rains and strong winds on May 14, 2023, from Cyclone Mocha.

- Damaged Building
- Sa Par Htar Village
- La Mone Taing Village
- Village Boundary

Satellite Image:

Pre-disaster :
Pleiades on 28 Oct 2022,
Post-disaster :
Pleiades on 18 May 2023,
Pleiades on 19 May 2023,
Pleiades on 21 May 2023.

Copyright:

"Pleiades © CNES (2023),
Distribution Airbus DS"

GIS Data:

Road © OSM (2023)
Administrative Boundary
© Myanmar Information
Management Unit (2023)

Map Scale 1:25,000
Coordinate System: GCS WGS 84
Datum: D WGS 84
Unit: Degree

0 0.34 0.68 1.35
Kilometers

Map product made by GIC-AIT
(v1.0).