

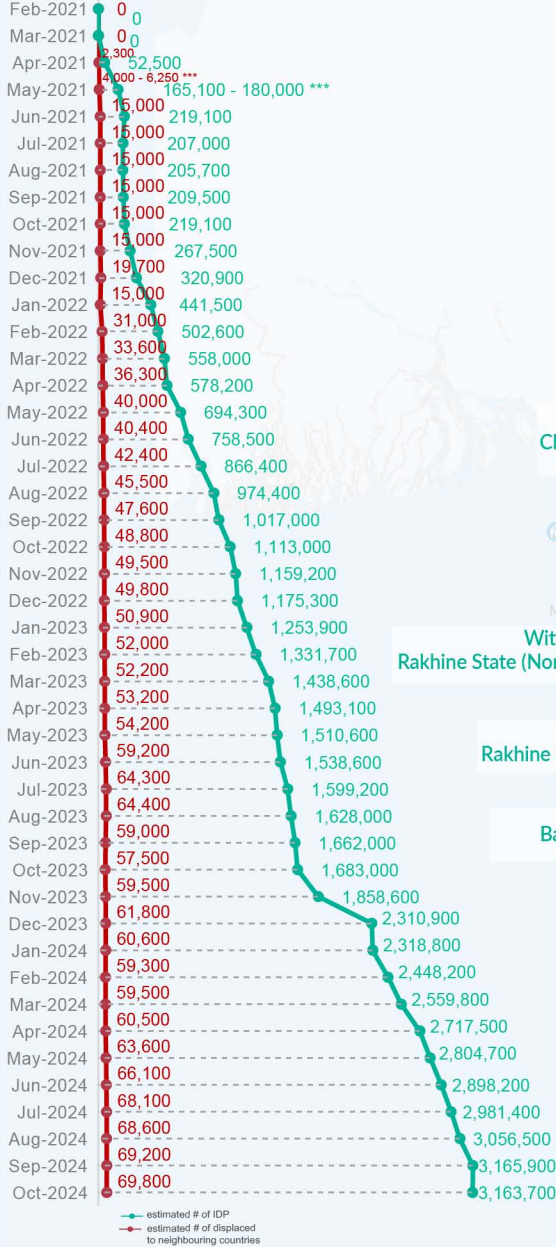
Key figures

Estimated # of IDPs → 3,163,700

Estimated # of displaced to neighbouring countries → 69,800

Source : UN in Myanmar

Estimated displacement figures by Month



*141,600 persons are displaced by armed conflict in neighbouring Kayah State while 4,600 persons are displaced by inter-EAO conflict between SSPP and RCSS.

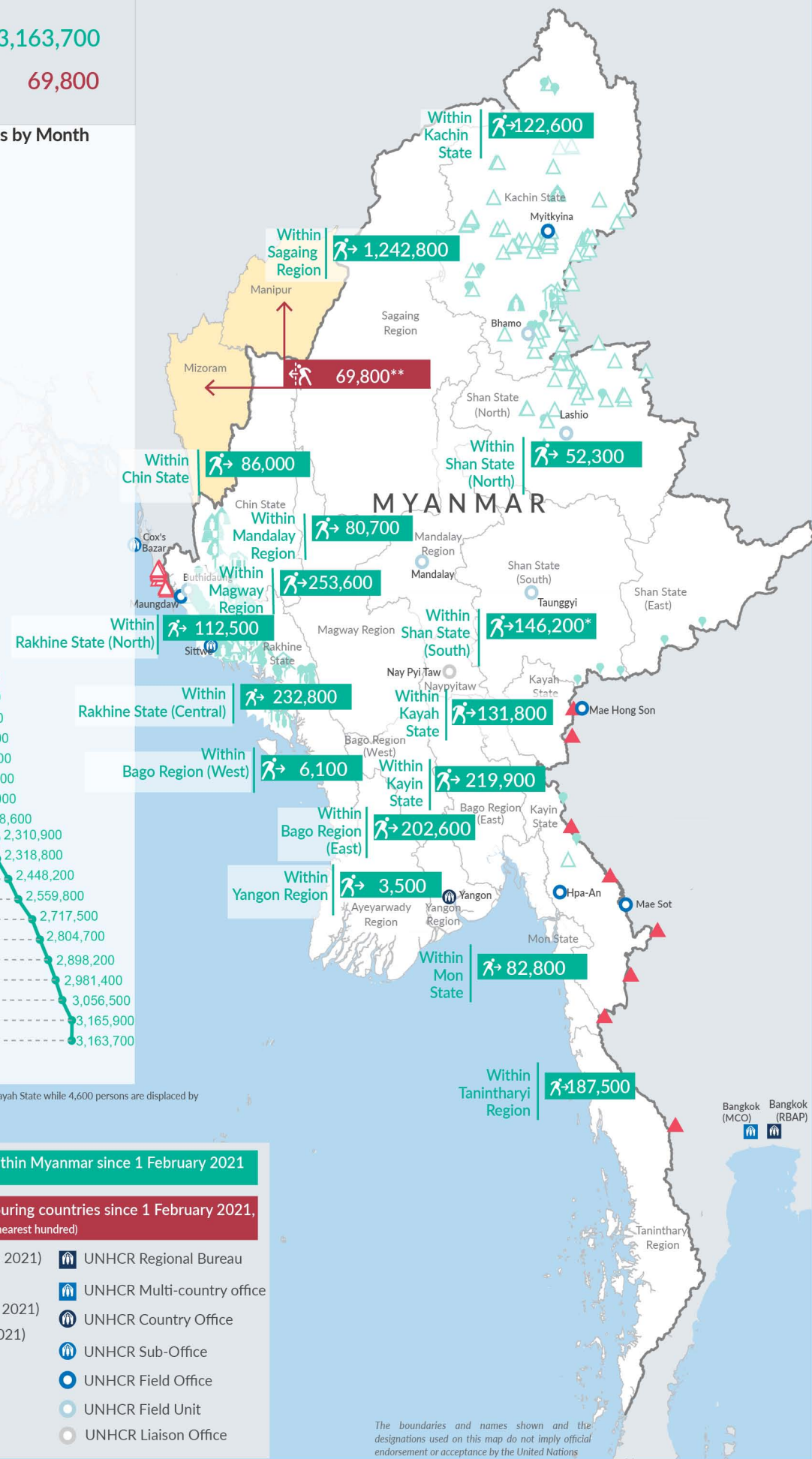
**UN Estimates

***Range of figures was used while data collection was in progress.

Estimated internal displacement within Myanmar since 1 February 2021 (rounded to the nearest hundred)

Estimated displacement to neighbouring countries since 1 February 2021, who remain displaced (rounded to the nearest hundred)

- IDP unplanned settlement (pre-1 Feb 2021)
- IDP Center (pre-1 Feb 2021)
- IDP spontaneous location (pre-1 Feb 2021)
- IDP planned settlement (pre-1 Feb 2021)
- Temporary shelter for displaced people from Myanmar
- Refugee, planned settlement
- States/Provinces with new arrivals
- International boundaries
- UNHCR Regional Bureau
- UNHCR Multi-country office
- UNHCR Country Office
- UNHCR Sub-Office
- UNHCR Field Office
- UNHCR Field Unit
- UNHCR Liaison Office



Key figures

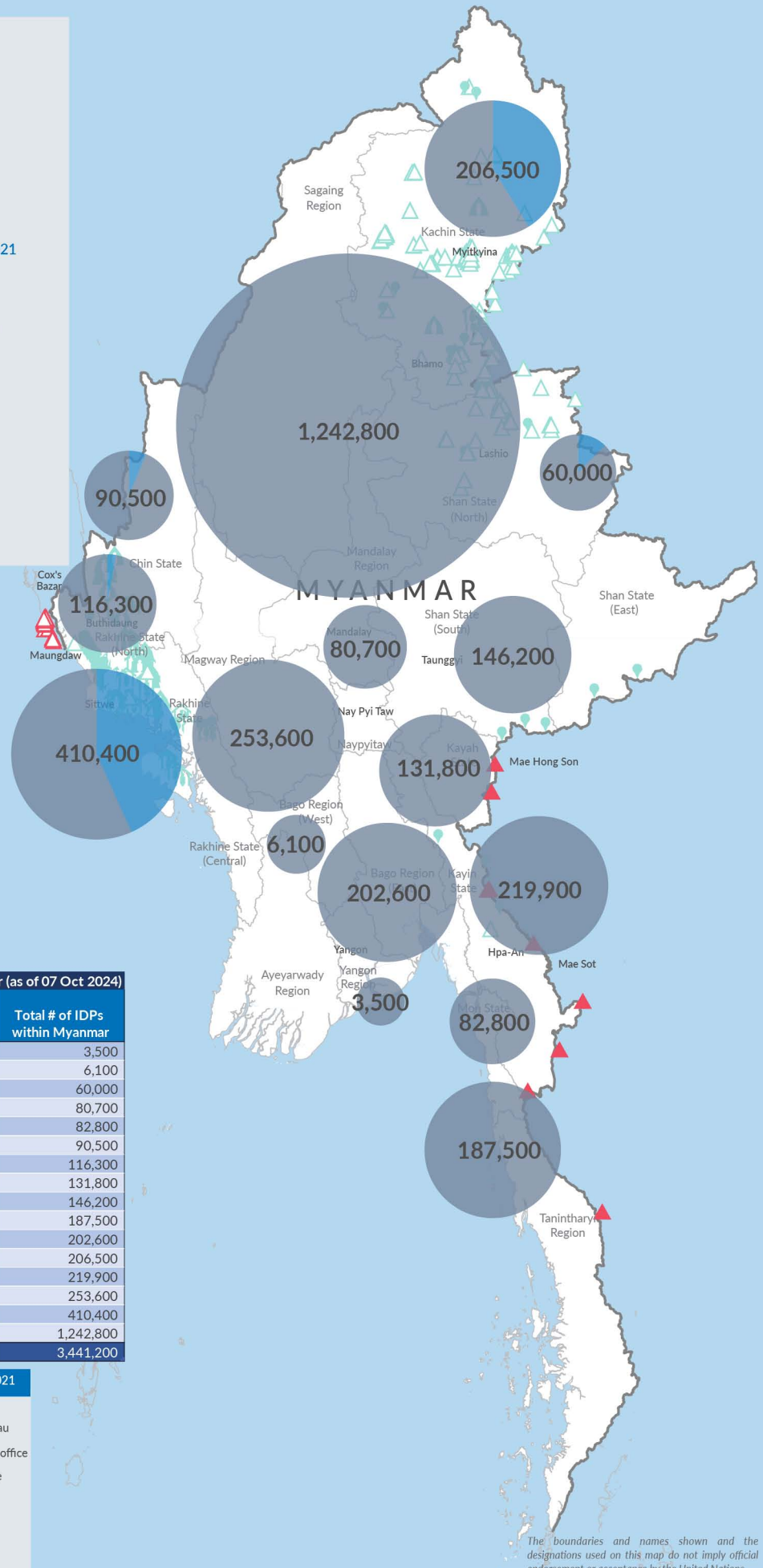

3,441,200

Estimated total IDPs within Myanmar



277,500
 Estimated # of IDPs displaced prior to 1 Feb 2021
(As of 30 Jun, 2024)

3,163,700
 Estimated # of IDPs displaced post 1 Feb 2021
(As of 07 Oct, 2024)
 Prior to 1 Feb 2021
 Post 1 Feb 2021

Source : UN in Myanmar


Estimated total internally displaced person (IDPs) within Myanmar (as of 07 Oct 2024)

State/Region	Prior to 1 Feb 2021 IDPs	Post 1 Feb 2021 IDPs	Total # of IDPs within Myanmar
Yangon Region		3,500	3,500
Bago Region (West)		6,100	6,100
Shan State (North)	7,700	52,300	60,000
Mandalay Region		80,700	80,700
Mon State		82,800	82,800
Chin State	4,500	86,000	90,500
Rakhine State (North)	3,800	112,500	116,300
Kayah State		131,800	131,800
Shan State (South)		146,200	146,200
Tanintharyi Region		187,500	187,500
Bago Region (East)		202,600	202,600
Kachin State	83,900	122,600	206,500
Kayin State		219,900	219,900
Magway Region		253,600	253,600
Rakhine State (Central)	177,600	232,800	410,400
Sagaing Region		1,242,800	1,242,800
Grand Total	277,500	3,163,700	3,441,200

 **Estimated internal displacement within Myanmar Pre+Post 1 February 2021**
(rounded to the nearest hundred)

-  IDP unplanned settlement (pre-1 Feb 2021)
-  IDP Center (pre-1 Feb 2021)
-  IDP spontaneous location (pre-1 Feb 2021)
-  IDP planned settlement (pre-1 Feb 2021)
-  Temporary shelter for displaced people from Myanmar
-  Refugee, planned settlement
-  International boundaries
-  UNHCR Regional Bureau
-  UNHCR Multi-country office
-  UNHCR Country Office
-  UNHCR Sub-Office
-  UNHCR Field Office
-  UNHCR Field Unit
-  UNHCR Liaison Office

The boundaries and names shown on this map do not imply official endorsement or acceptance by the United Nations