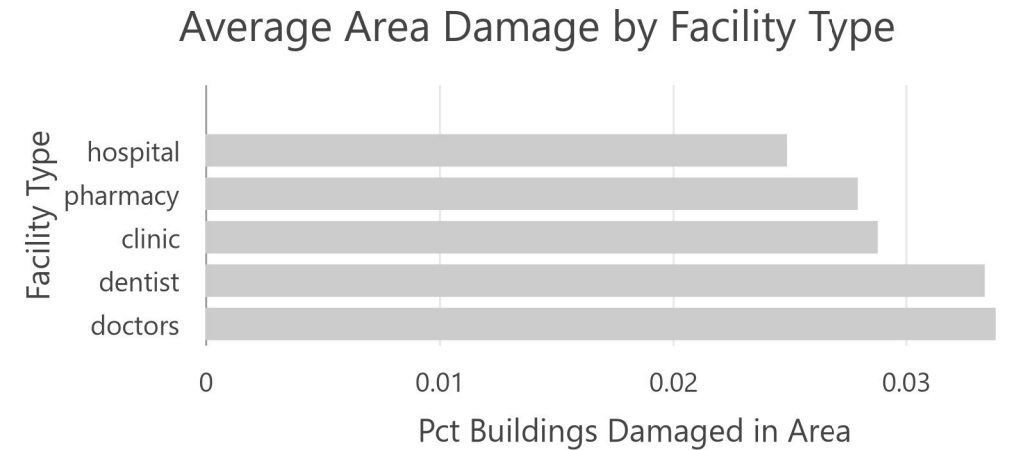
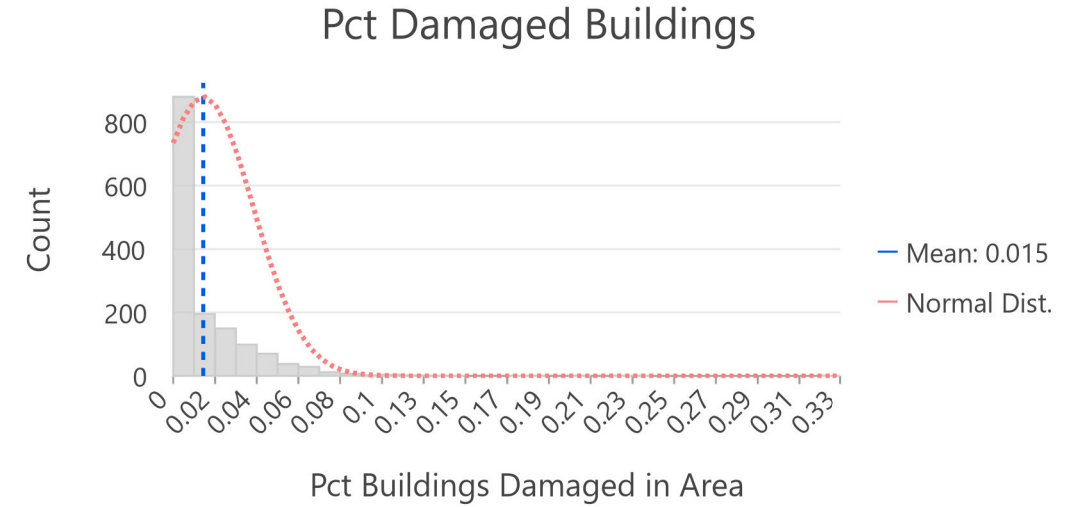
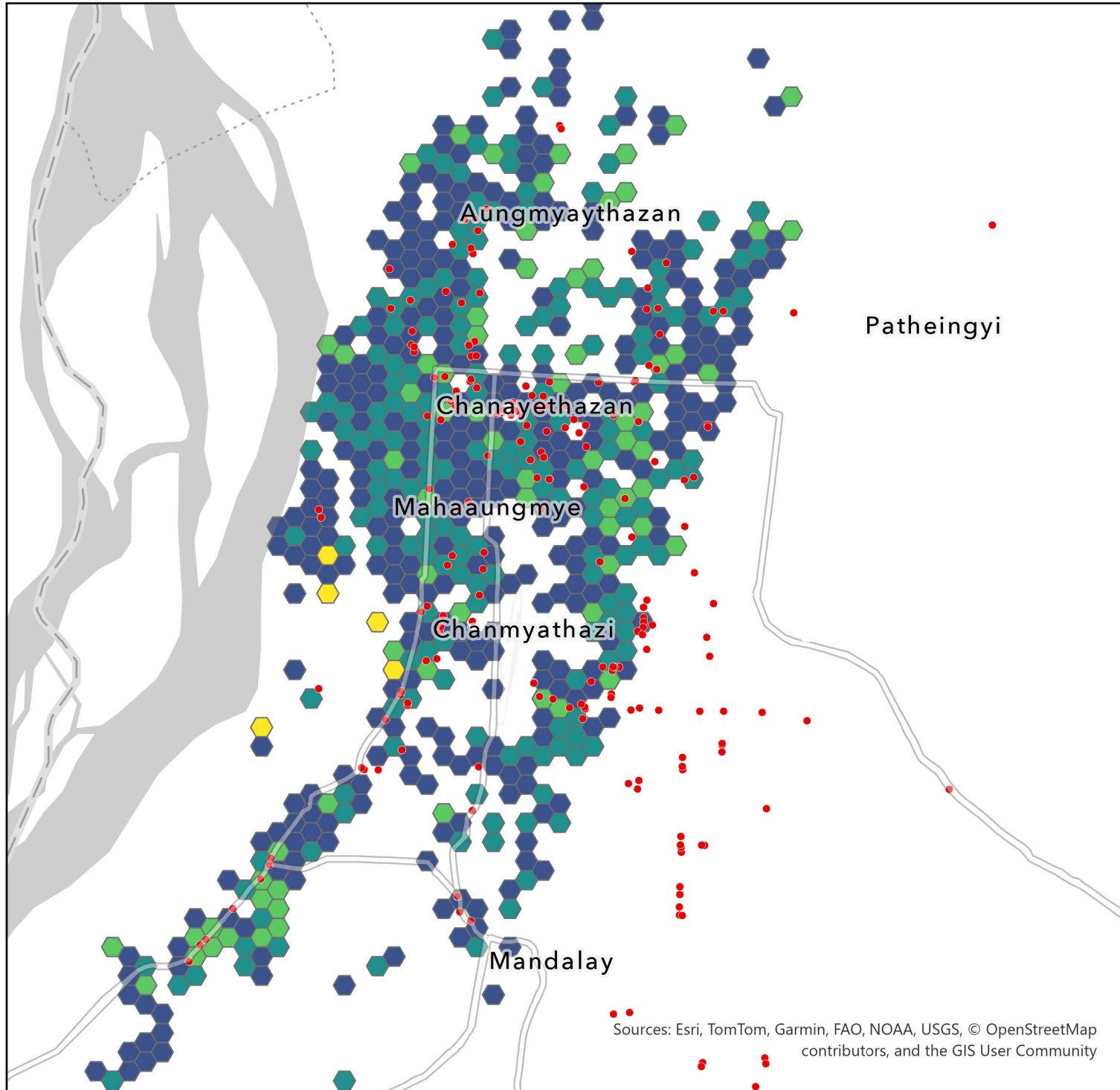


ML-Derived Building Damage and Health Facilities in Mandalay Following the March 28, 2025 Earthquake



- Mean Damaged Building
- 0%
 - 1% to 3%
 - 3.1% to 5%
 - 6% to 14%
 - 15% to 33%
 - Health Facilities

This map shows a 0.22km² tessellated grid of the percentage of buildings considered to be damaged by the Microsoft AI for Good damage estimation model, based on post-earthquake imagery from Planet. Source: <https://data.humdata.org/organization/microsoft-ai4g-lab>

Each health facility type was located in an area with a damage proportion greater than the city average per grid cell, with private doctors and dentists roughly 1/3 more likely to be in higher damage areas than hospitals and pharmacies. Source: https://data.humdata.org/dataset/hotosm_mmr_health_facilities