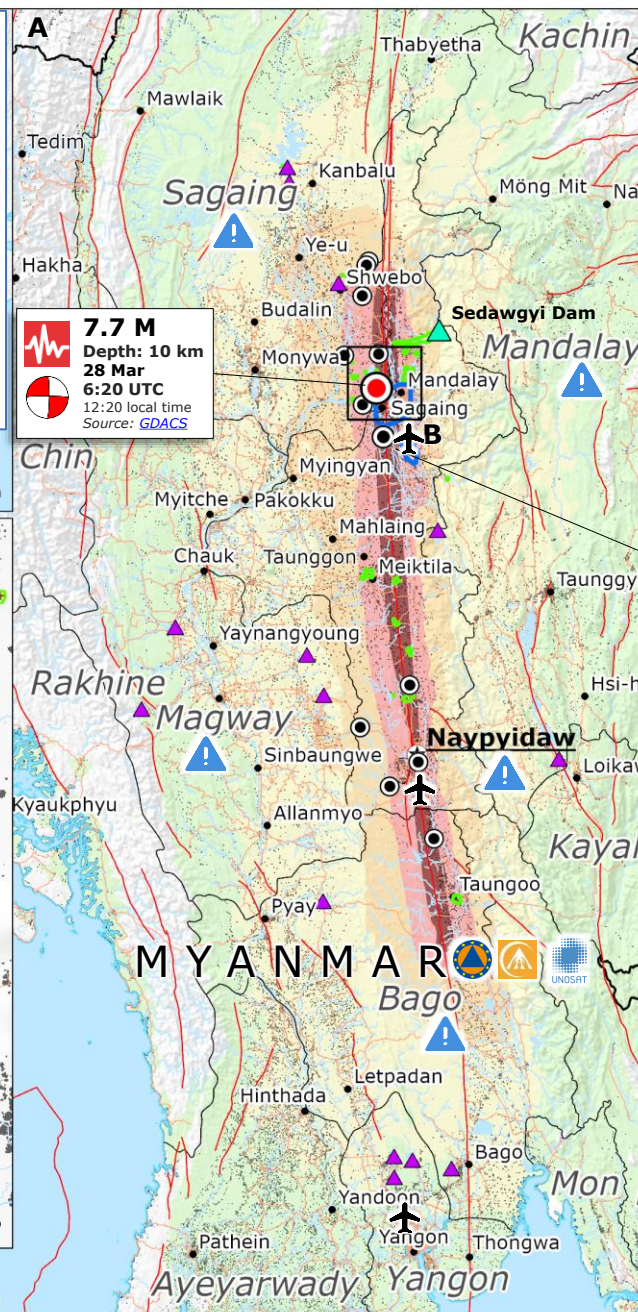
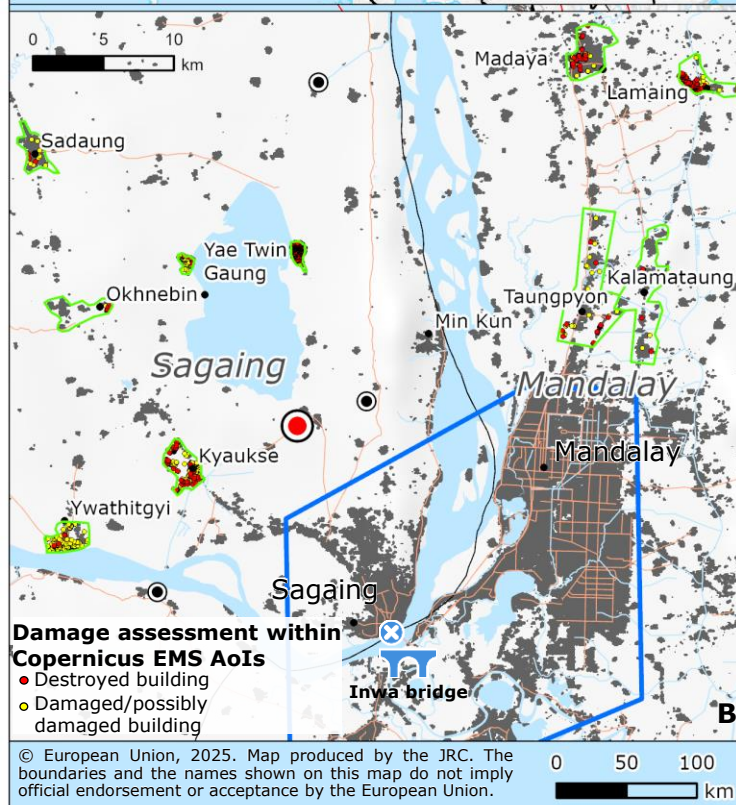
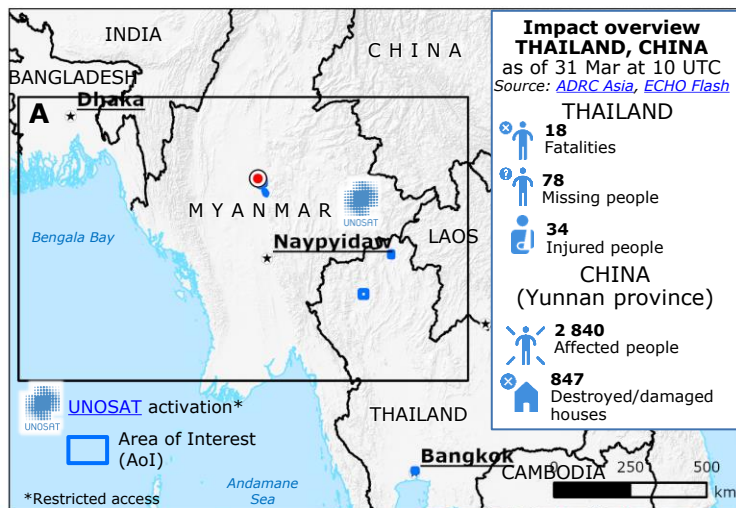


Myanmar | 7.7 M earthquake of 28 March and EU response



EU response
as of 31 March at 18:00 UTC

€ **€ 2.5 million emergency aid (ALERT)**

The UCPM has been activated by receiving a request from the Joint Environmental Unit from UNEP/OCHA on 29 March and by UN OCHA Myanmar on 30 March.

So far, 2 UCPM Member States made an offer for assistance:

- 1 ERCC Liaison Officer** has been deployed to Bangkok
- 1 EUCPT team composed of 12 experts and one ERCC Liaison Officer** have been selected for deployment
- On 28 March, Copernicus EMS On-Demand Rapid Mapping Service was requested to provide damage assessment emergency mapping ([EMSR798](#)): **26 damage assessment maps** were produced.

Impact overview MYANMAR
as of 31 Mar at 10 UTC
Source: [media](#)

- 2 056** Fatalities
- 270** Missing people
- 3 900** Injured people
- 1** Destroyed bridge

Copernicus EMSR798 activation

Area of Interest (AoI)

Dam

Affected dam

Declared state of emergency**

Airport with limited capacity

Densely populated area, Source: Copernicus EMS [GHSL](#)

State boundary

Country boundary

Road

River

**Sagaing, Mandalay, Magway, Bago regions, northeastern Shan State, Naypyidaw Council Territory