

MIMU Assessment Tracking Overview - 16th November 2020

What is the MIMU Assessment Tracking?

The MIMU Assessment Tracking¹ gathers information on assessments, surveys, reports and publications (“Assessments”) focused on humanitarian, development and peace-related issues and activities in Myanmar. It allows agencies, government counterparts, researchers and donors to share resources developed for particular initiatives (results, methodologies, questionnaires and data), to benefit from the knowledge and learning of other agencies and assessment initiatives, to coordinate information gathering and to avoid duplication or gaps in assessment coverage.

What does it include?

The MIMU Assessment Tracking includes details on:

- Implementing agencies (WHO)
- Sector / topics covered (WHAT)
- Geographic coverage (WHERE)
- Assessment status – whether planned, ongoing or completed (WHEN)
- Methods used for information gathering (HOW)

Which products will be available and how they can be accessed(AVAILABLE RESOURCES)

Most Assessment records are public however the Assessment Tracking also includes “restricted” records which are not public but can be followed up with the concerned agency.

How can I upload and view information on assessments and publications?

Agencies add and update their own Assessment records as the activity progresses, updating the initiative status from planned → ongoing → completed, along with detail of the geographic and sector coverage, anticipated products etc. Information can be uploaded online through the MIMU website (www.themimu.info/assessments-and-publications), or offline by submitting the [Assessment Tracking Excel sheet](#) to the MIMU team.

Uploaded Assessment records appear on the [MIMU Assessment Tracking Dashboard](#), and in the Excel Assessment Listing. Agencies can also share their final Assessment reports and publications through the MIMU website. If your agency’s Assessment is not visible in the Dashboard or Assessment Listing, it may not yet have been registered in the MIMU Assessment Tracking tool, or may be registered as “restricted”, in which case the full details of the Assessment record are not made public.

Overview of reported Assessments as of 16th November 2020

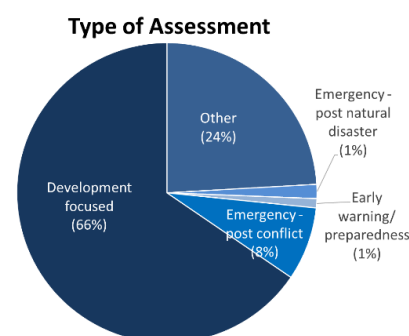
As of 16th November 2020, 1,909 Assessments were reported as undertaken or planned between 2007 and 2023. This includes 71 COVID-19-related initiatives.

These Assessments were reported by 191 organisations – namely 74 INGOs, 18 UN agencies, 33 local NGOs, 21 International Organisations, 14 Donors/ Embassies, 9 Government, 1 Red Cross agency, 1 CBO and 20 Others.

1,250 (66%) of the reported Assessments are development-focused; most were conducted countrywide, in Yangon, Mandalay, Ayeyarwady, Magway and Sagaing.

460 (24%) of recorded Assessments focus on “other” purposes such as annual reports, the MIMU 3W, guidelines and specific sector surveys; the focus in this case is mainly Countrywide, Rakhine, Kayin, Mon or Yangon. 151 (8%) of the reported Assessments emergency post-conflict initiatives, primarily on Rakhine, Shan (North) and Kachin.

460 (24%) of recorded Assessments focus on “other” purposes such as annual reports, the MIMU 3W, guidelines and specific sector surveys; the focus in this case is mainly Countrywide, Rakhine, Kayin, Mon or Yangon. 151 (8%) of the reported Assessments emergency post-conflict initiatives, primarily on Rakhine, Shan (North) and Kachin.



¹ The MIMU Assessment Tracking tool collates records provided by implementing agencies. Inclusion of a document in this listing does not imply endorsement of its contents by the MIMU or the United Nations.

COVID-19 Related Assessments

71 COVID-related Assessments have been reported by 13 agencies, namely IFPRI, FAO, UN Women, RI, TAF, CARE, UN-Habitat, UNICEF, MC, NAG, VNGI, WFP and WV.

Who?

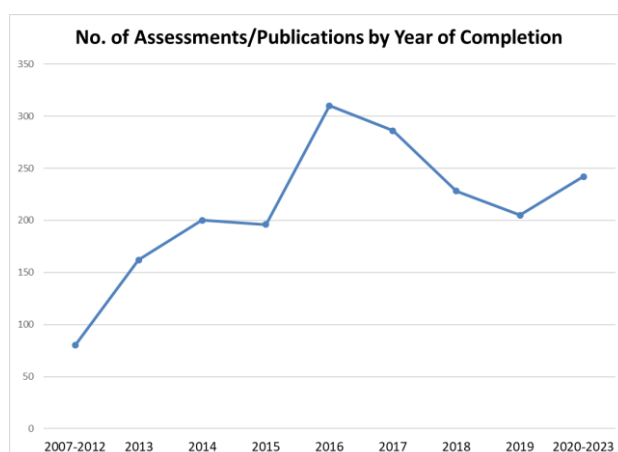
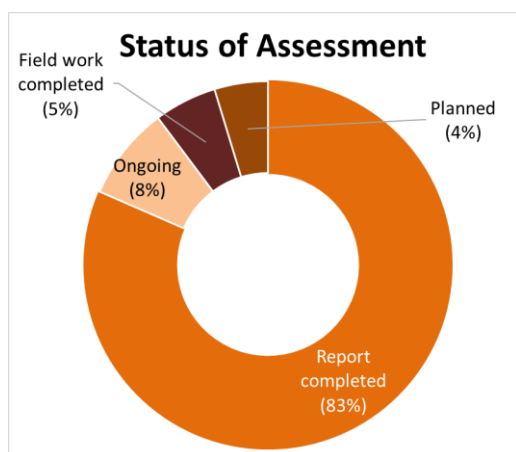
To date, 14 agencies have contributed 50% of the Assessments, namely UNOPS, MKE, RI, UNFPA, MCRB, SCI, UNDP, IRC, IFPRI, UN-Habitat, UNHCR, MHDO, MIMU and UNOCHA.

Number of Assessment Records and their Status by Organisation Type

Reporting Organisation	# of Orgs.	# of Assessment Records	Report Status			
			Report completed	Ongoing	Field work completed	Planned
CBO	1	2	1			1
Donor/Embassy	14	52	51		1	
INGO	74	746	610	52	30	54
IO	21	46	44	1	1	
NNGO	33	220	133	52	25	10
Red Cross	1	4	2	1	1	
Government	9	31	31			
UN	18	783	679	50	34	20
Other	20	25	25			
Grand Total	191	1909	1576	156	92	85

When?

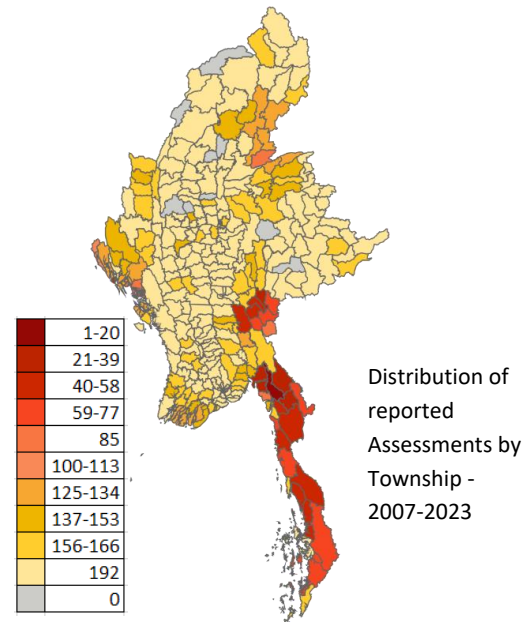
156 initiatives were listed as “ongoing” as of November 2020. A further 1,576 Assessments are recorded as fully completed and 92 are near completion with the field work completed.



Where?

38% of reported Assessments are for the Countrywide initiatives, followed by Rakhine (16%), Yangon (13%) and Ayeyarwady (11%). The most frequently reported states/regions are Rakhine (16%), Yangon (13%), followed by Ayeyarwady, Mandalay and Shan (North). Areas with the least reported Assessments are Bago (West) and Nay Pyi Taw.

State/Region	Total No. of Assessments
Ayeyarwady	218
Bago (East)	155
Bago (West)	65
Chin	113
Country-wide	723
Kachin	158
Kayah	111
Kayin	199
Magway	176
Mandalay	208
Mon	174
Nay Pyi Taw	21
Rakhine	297
Sagaing	157
Shan (East)	107
Shan (North)	204
Shan (South)	179
Tanintharyi	111
Yangon	238



Sector	Country-wide	Ayeyarwady	Bago (East)	Bago (West)	Chin	Kachin	Kayah	Kayin	Magway	Mandalay	Mon	Nay Pyi Taw	Rakhine	Sagaing	Shan (East)	Shan (North)	Shan (South)	Tanintharyi	Yangon	Grand Total
Agriculture	78	38	27	8	23	21	23	29	31	37	29	3	28	31	19	21	42	21	15	261
Aid Information	19	1	8			10	8	8			8		12			10	8	8		39
CCCM	5					17							14			17				26
Coordination	28	1	1		2	19			2	2	2		24	1		13			1	64
Disaster Risk Reduction	20	9	13	3	13	4	1	7	9	8	6		13	13	3	2	2	2	9	93
Economic Infrastructure	25	3	6	3	2	1	3	3	2	3	5		2	5	2	3	3	2	1	41
Education	17	9	14		5	12	29	29	12	7	24		28	3	4	15	7	17	12	119
Environment	56	12	14	5	4	4	1	1	19	20	10	1	2	19			6	5	9	105
Food	16	12	23	8	13	31	24	30	12	11	25		41	7	9	30	21	23	3	117
Gender	61	3	3	1	9	30	5	9	6	11	9	1	24	6	6	17	8	2	11	130
Governance	85	26	35	21	17	26	11	13	27	20	16	1	10	21	2	8	26	7	34	171
Health	257	57	44	20	24	37	32	62	25	41	50	4	53	24	16	53	33	40	60	556
Infrastructure	16	2	5		1	2	6	5	2	3	5		3	3		2	1	5	1	36
Logistics	13				1	17			1	2			15	1		10				38
Mine Action			6				9	7			7					4		7		16
Multi Sectors	74	6	10	4	5	9	16	15	6	7	15	1	10	4	6	3	10	13	4	123
NFI	5	1	2			13	8	8	1	1	9		15	1		13		8	1	37
Non-Agricultural Livelihoods	31	16	21	5	12	27	17	18	14	17	22		29	16	7	21	19	16	8	129
Nutrition	31	20	21	3	11	27	21	23	11	14	20		53	12	11	29	24	16	16	164
Other	170	75	19	8	22	15	17	56	53	65	50	9	64	45	44	55	52	35	79	401
Peace Building / Conflict Prevention	40		3	1	4	7	6	12		3	14		7		3	6	7	4	5	74
Private Sector Development	42	4	5	1	1			3	3	4	5		1	2	1		2	2	11	69
Protection	36	12	27	3	10	27	33	38	15	16	40	2	56	7	7	36	17	28	22	186
Shelter	6	1	14		1	26	23	22	2	2	22		23	1		19	10	22	1	78
Tourism	4	23	1	1	1	1	2	21	21	21	20		20	21	21	21	24	20	22	32
WASH	9	24	26	19	23	50	21	22	24	29	17		65	28	3	24	24	16	26	170

What?

Health has been the most frequently reported Assessment sector over the 2007-2023 period, followed by Agriculture, Protection, Governance, WASH, Nutrition, and Non-Agricultural Livelihoods.

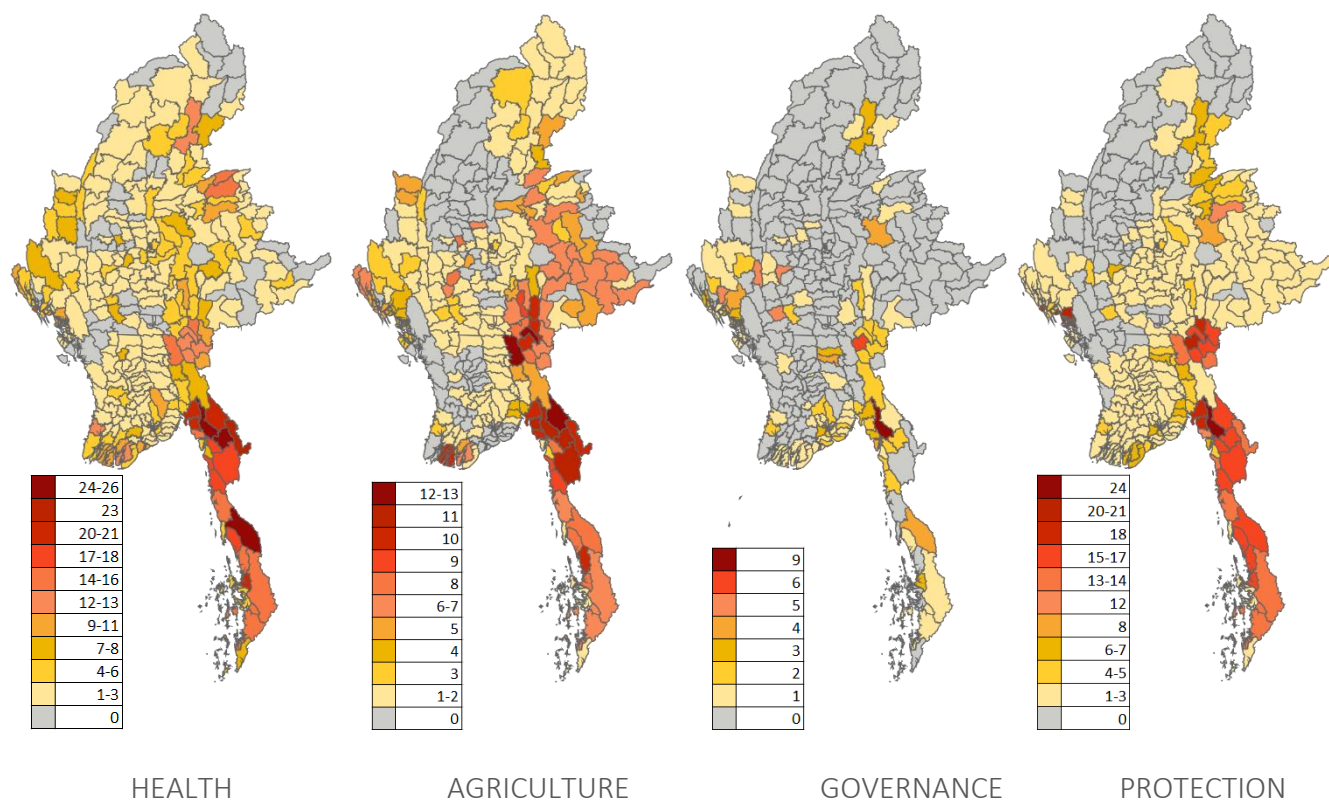
The sectors with the least reported Assessments were Mine Action, CCCM, Tourism and Infrastructure.

“Other” refers to reported initiatives which do not readily fit the sector definitions, namely Transportation, Mining, Migration and Development, Early Recovery, Human Rights, Oil and Gas, ICT, Business and Cash-focused Interventions.

63% of the total reported Assessments are publicly available, and 19% are available from the reporting agency on request.

Sector (s) Covered	Public	Total
Agriculture	258	261
Aid Information	39	39
CCCM	26	26
Coordination	58	64
Disaster Risk Reduction	89	93
Economic Infrastructure	40	41
Education	100	119
Environment	102	105
Food	106	117
Gender	122	130
Governance	162	171
Health	502	556
Infrastructure	34	36
Logistics	38	38
Mine Action	15	16
Multi Sectors	122	122
NFI	37	37
Non-Agricultural Livelihoods	125	129
Nutrition	132	164
Other	393	401
Peace Building / Conflict Prevention	74	74
Private Sector Development	68	69
Protection	169	186
Shelter	78	78
Tourism	32	32
WASH	154	170

Sector Distribution of Assessments 2007-2023 for Which Township is Reported



How to add or update your Assessments and Publications?

1. Start by reading [the guidelines](#) to correctly register your Assessments on MIMU's Assessment Tracking:
2. To submit an Assessment offline, please fill in the [MIMU Assessment Registry Entry Form](#) and email it to assessment@themimu.info.
3. To submit or edit an Assessment online, please click the link below. Please note that newly added or edited Assessments will be subject to review by MIMU prior to being published/updated on the website.
[Login/Register to submit assessment](#)

MIMU Assessment Tracking Products

The three main products of the MIMU Assessment Tracking are as follows:

1. **Assessment Tracking Data (Excel)** – updated every 3 months.
Lists the records for all reported publicly available Assessments – includes who, what, where, when, how the initiative was conducted, availability of the tools and data produced through the Assessment and key contact persons for follow-up.
<http://www.themimu.info/assessments-and-publications>
2. **Assessment Tracking Dashboard (MIMU website)** – updated every 6 months.
Interactive dashboard allowing users to search reported Assessments by where (state/region), when (year), what (sector), and status (completed, planned etc.).
<http://www.themimu.info/assessment-dashboard>
3. **Assessment Tracking Overviews (PDF documents)** – updated every six months
MIMU produces this short narrative update and a shorter “One Pager” to draw out information on the reported assessments.

Please share your feedback to help us make the MIMU Assessment Tracking tool and this Overview as useful as possible assessment@themimu.info

Prepared by MIMU,
December 10, 2020

