

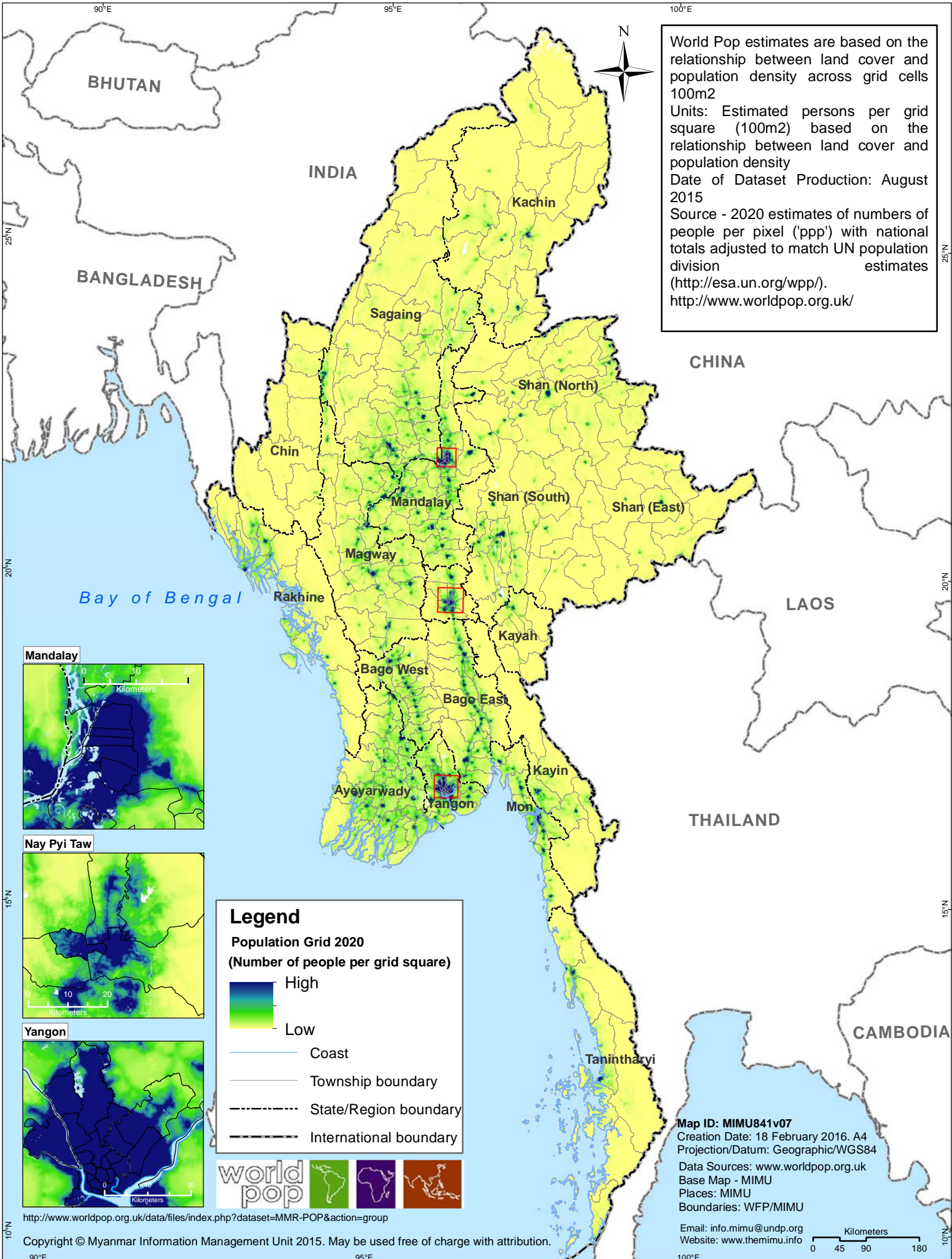


Population of Myanmar using the World Population Grid

Estimated by 2020



Humanitarian Aid and Civil Protection

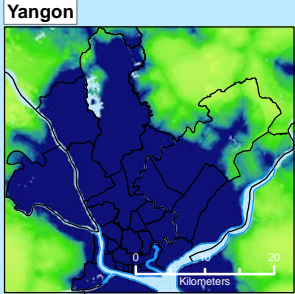
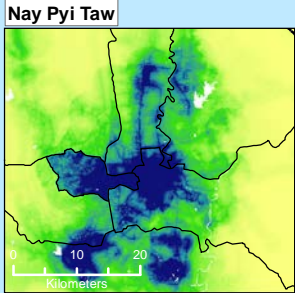
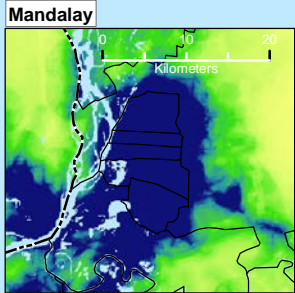


World Pop estimates are based on the relationship between land cover and population density across grid cells 100m2

Units: Estimated persons per grid square (100m2) based on the relationship between land cover and population density

Date of Dataset Production: August 2015

Source - 2020 estimates of numbers of people per pixel ('ppp') with national totals adjusted to match UN population division estimates (<http://esa.un.org/wpp/>). <http://www.worldpop.org.uk/>



Legend

Population Grid 2020
(Number of people per grid square)

- High
- Low
- Coast
- Township boundary
- State/Region boundary
- International boundary



<http://www.worldpop.org.uk/data/files/index.php?dataset=MMR-POP&action=group>

Copyright © Myanmar Information Management Unit 2015. May be used free of charge with attribution.

Map ID: MIMU841v07
 Creation Date: 18 February 2016. A4
 Projection/Datum: Geographic/WGS84
 Data Sources: www.worldpop.org.uk
 Base Map - MIMU
 Places: MIMU
 Boundaries: WFP/MIMU

Email: info.mimu@undp.org
 Website: www.themimu.info