

Advanced Disaster Analysis and Mapping

ADAM Project

ADAM's Family

ADAM Earthquake

- Shake Intensity
- Epicenter Map
- Population Impact Table (by shake intensity)

ADAM Tropical Storm

- Storm Trajectory Map
- Rainfall Forecast Map
- Population Impact Table (by windspeed)

ADAM Floods

- Flood Map/Forecast
- Population and Cropland Impact Map
- Population and Cropland Impact Table

ADAM Earthquake

EARTHQUAKE

EVENT INFO

7.0 Magnitude

Place: 46km E of Vigan

Time: 27 Jul. 2022, 00:43 GMT

Depth: 10.0 km

Coord.: Lat: 17.56 Lon: 120.6

Populat.: 780,585 within 50km

Automatically generated **SHAKE MAP** powered by: **ADAM** - Automated Disaster Analysis and Mapping

27 July 2022 02:48:26 GMT

USGS ShakeMap

| Instrumental Intensity | I | II-III | IV | V | VI | VII | VIII | IX | X |
|------------------------|----------|--------|----------|------------|-------------|----------|----------------|---------|------------|
| Potential Shaking | Not felt | Weak | Moderate | Strong | Very Strong | Severe | Violent | Extreme | |
| Potential Damage | Nano | Nano | Nano | Very Light | Light | Moderate | Moderate/Heavy | Heavy | Very Heavy |

China
Philippines
Scarborough Reef

EARTHQUAKE

EVENT INFO

7.0 Magnitude

Place: 46km E of Vigan

Time: 27 Jul. 2022, 00:43 GMT

Depth: 10.0 km

Coord.: Lat: 17.56 Lon: 120.6

Populat.: 780,585 within 50km

Automatically generated **SHAKE MAP** powered by: **ADAM** - Automated Disaster Analysis and Mapping

27 July 2022 02:48:26 GMT

USGS ShakeMap

| Instrumental Intensity | I | II-III | IV | V | VI | VII | VIII | IX | X |
|------------------------|----------|--------|----------|------------|-------------|----------|----------------|---------|------------|
| Potential Shaking | Not felt | Weak | Moderate | Strong | Very Strong | Severe | Violent | Extreme | |
| Potential Damage | Nano | Nano | Nano | Very Light | Light | Moderate | Moderate/Heavy | Heavy | Very Heavy |

China
Philippines
Scarborough Reef

MODIFIED MERCALLI INTENSITY SCALE:
8.2/10

Intensity Class VIII:
Drivers have trouble steering. Tall structures such as towers, monuments and chimneys may twist and fall. Wood frame houses that are not bolted to their foundations may shift and sustain serious damage. Damage is slight to moderate in well-constructed buildings, considerable in poorly constructed buildings. Branches are broken and fall from trees. Changes occur in flow or temperature of springs and wells. Cracks appear in wet ground and on steep slopes.

Concepts and definitions
Shake Map combines instrumental measurements of shaking with information about local geology and earthquake location and magnitude to estimate potential impacts throughout a geographic area. The estimated intensity map is derived from ground motions recorded by seismographs and represents Modified Mercalli Intensities (MMI's) that are likely to have been associated with the ground motions. Magnitude and Intensity measure different characteristics of earthquakes. Magnitude measures the energy released at the source of the earthquake. Magnitude is determined from measurements on seismographs. Intensity measures the strength of shaking produced by the earthquake at a certain location. Intensity is determined from effects on people, human structures, and the natural environment. (Source: USGS)

Please report errors to hq.gis@wfp.org. Event ID: [US50000374](https://www.usgs.gov/earthquake-hazards-program). Map projection: WGS 84 / UTM Zone 51N (EPSG:32651). Sources: USGS (ShakeMap layer, earthquake info), GAUL, WFP/VAM, NASA, ESRI. The designations employed and the presentation of material in this map do not imply the expression of any opinion whatsoever of WFP concerning the legal or constitutional status of any country, territory or sea area, or concerning the delimitation of frontiers.

Legend:
WFP Country Office, WFP Sub Office, WFP Warehouse, Airport, Port, Earthquake epicenter, Dam, Nuclear power plant, International boundary, First level administrative boundary, Main road, Water body

EARTHQUAKE

EVENT INFO

6.8 Magnitude

Place: 7km W of Nueva Era

Time: 25 Oct. 2022, 14:59 GMT

Depth: 10.0 km

Coord.: Lat: 17.9 Lon: 120.6

PEOPLE LIVING IN THE AREA

- Within 15 km from epicenter: 92,339
- Within 30 km from epicenter: 458,281
- Within 50 km from epicenter: 1,087,720

FOOD SECURITY

15.6M People with insufficient food consumption

IN THE COUNTRY

CHINA
PHILIPPINES

Region I (Ilocos Region), Philippines

WEATHER FORECAST

Current Conditions: 28°C, Humidity: 70%, Wind: 4.73 m/s

WFP WORLD FOOD PROGRAMME PRESENCE

OFFICES IN THE AFFECTED COUNTRY
Sub Offices: 2
Country Offices: 1
Reference Regional Bureau for Philippines: RBB - Bangkok

CLOSEST FACILITY
Manila, Country Office, PHL (374km from epicenter)

Automatically generated alert powered by: **ADAM** - Automated Disaster Analysis and Mapping

25 October 2022 | 15:18:19 GMT

Follow alerts via Twitter: [@wfp_adam](https://twitter.com/wfp_adam)

Legend:
WFP Sub Office, WFP Warehouse, Airport, Port, Earthquake epicenter, Dam, Nuclear power plant, International boundary, First level administrative boundary, Main road, Water body

Earthquake in Philippines - Preliminary Population Exposure Estimation.

The population exposure, summarized by Admin 0, 1 and 2, has been calculated using a 1km resolution WorldPop raster (WorldPop Database 2020). Admin boundaries are defined by Gaul 2015 dataset. Impact intensity levels are derived from the ShakeMap, a product of the USGS Earthquake Hazards Program. This is a preliminary analysis and has not yet been validated in the field.

Analysis performed by ADAM (Automated Disaster Analysis and Mapping) on 25-10-2022 at 17:09 UTC.
Contact: hq.gis@wfp.org

Intensity classes for this earthquake:
III: Felt by people indoors. Hanging objects swing back and forth. Vibration from the earthquake may seem like the passing of light trucks. May not be recognized as an earthquake.
IV: Hanging objects swing. Vibration may seem like the passing of heavy trucks or a jolt, like a heavy ball striking the walls. Parked vehicles may rock noticeably. Windows, dishes, doors may rattle and glasses clink.
V: Almost everyone feels movement whether inside or outdoors. Sleeping people are awakened. Liquids in containers are disturbed; some are spilled. Small unstable objects are displaced or overturned. Doors vibrate. Felt by all; some are frightened and take cover. People have difficulty walking due to motion. Objects fall from shelves and dishes, glassware and ceramics may be broken. Pictures fall off walls. Furniture may vibrate.
VII: People have difficulty standing. Drivers on the road feel their cars shaking. Furniture may be overturned and broken. Loose bricks fall from buildings and masonry walls and cracks in plaster and masonry may appear.

| ADM0_NAME | ADM1_NAME | ADM2_NAME | POPULATION | | | | | TOTAL |
|-------------|--|--|------------|---------|---------|---------|---------|-----------|
| | | | 3 | 4 | 5 | 6 | 7 | |
| Philippines | Cordillera Administrative region (CAR) | Abra | 2,026 | 59,901 | 169,125 | 25,134 | 255,786 | |
| | | Apayao | 106,105 | 37,276 | | | 143,381 | |
| | | Benguet | 728,388 | 169,484 | | | 897,872 | |
| | | Iligan | 31,739 | 47,986 | | | 79,725 | |
| | | Kalinga | | 282,739 | 22,218 | | 304,957 | |
| | | Mountain Province | | 192,737 | 155 | | 192,892 | |
| | | Ilocos Administrative region (CAR) - TOT | 760,127 | 801,077 | 119,150 | 169,125 | 25,134 | 1,874,613 |
| | | Region I (Ilocos region) | 430 | 154,692 | 474,109 | 21 | 629,252 | |
| | | Ilocos Sur | 1,058 | 221,161 | 121,557 | | 343,776 | |
| | | La Union | 319,851 | 462,755 | | | 782,606 | |
| Pangasinan | 102,211 | | | | 102,211 | | | |

WFP

Legend:
WFP Country Office, WFP Sub Office, WFP Warehouse, Airport, Port, Earthquake epicenter, Dam, Nuclear power plant, International boundary, First level administrative boundary, Main road, Water body

ADAM Tropical Storm

TROPICAL STORM

EVENT INFO

i

Current windspeed: 92.6 km/h

Max. Storm Surge: 0.69 m

Current Coordinates: Lat: 16.4 Lon: -63.3

Warning ref.: NOAA - Bulletin #12

PEOPLE LIVING IN AREAS AT RISK

(All Countries Considered)

120 km/h windspeed ● 1,063,619

90 km/h windspeed ● 2,418,099

60 km/h windspeed ● 15,163,653



Tropical Cyclone FIONA

WFP WORLD FOOD PROGRAMME PRESENCE

CURRENT CLASSIFICATION

Tropical Storm

CLOSEST FACILITIES

Roseau Country Office (DMA): 238 km on 17/09 at 09:00

Bridgetown Country Office (BRB): 684 km on 17/09 at 18:00

Caracas Country Office (VEN): 736 km on 18/09 at 06:00

CLOSEST HUMANITARIAN RESPONSE DEPOT


Panama City (PAN): 1943 km on 17/09 at 09:00

Automatically generated alert powered by:
ADAM - Automated Disaster Analysis and Mapping

17 September 2022 | 09:28:40 GMT

A collaboration with JRC

Follow alerts via Twitter: @wfp_adam



WFP Country Office

WFP Sub Office

WFP Field Office

WFP Warehouse

Wind 1000h

Wind speed

Wind speed (forecast)

National Capital

Major Town

Intermediate Town

Densely Populated Area

International Boundary

Administrative Boundary

Coastline

Regionally Joint Level

Country and Admin. Boundary

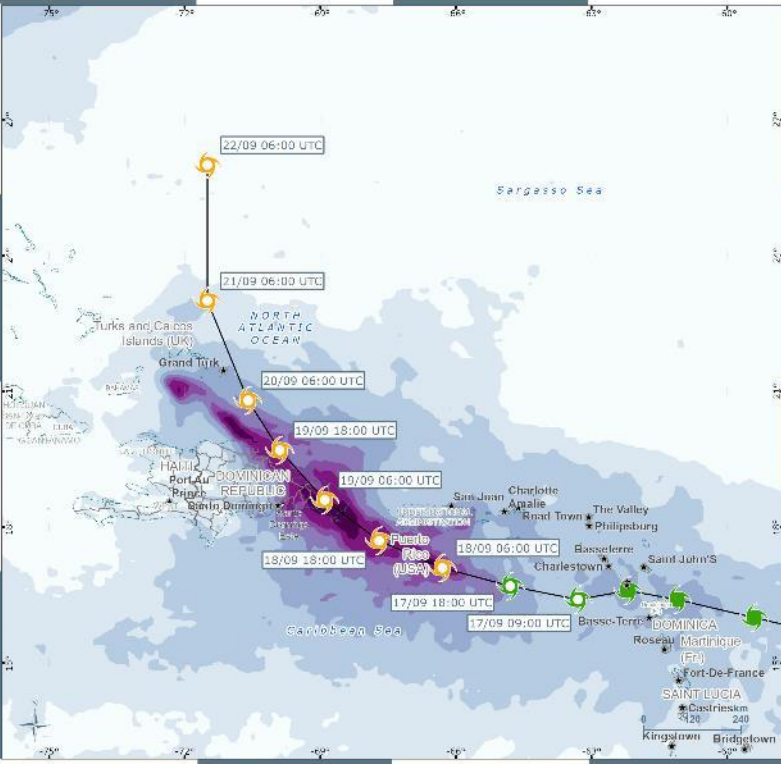
Coastline

Please report errors to fwf.gis@wfp.org. Report ID: 100001812. Coordinate system: EPSG:31466. Data sources: GDACS, Landsat 2018, Gaia, WFP, ESRI. The designations employed and the presentation of material in this map do not imply the expression of any opinion whatsoever of WFP concerning the legal or constitutional status of any country, territory or sea area, or concerning the delimitation of frontiers.

TROPICAL STORM

Tropical Cyclone FIONA

5 Days Precipitation Forecast - 16 Sep to 21 Sep



PRECIPITATION BY CITY

Accumulated Precipitation Forecast

| City | 5 Days Rainfall |
|--------------------------------|-----------------|
| La Romana (DOM) | 419 mm. |
| San Pedro de Macoris (DOM) | 357 mm. |
| Salvañn de Higüey (DOM) | 281 mm. |
| Ponce (PRI) | 235 mm. |
| San Francisco de Macoris (DOM) | 166 mm. |
| Puerto Plata (DOM) | 151 mm. |
| Santo Domingo (DOM) | 147 mm. |
| Los Alcarrizos (DOM) | 147 mm. |
| Concepción de La Vega (DOM) | 124 mm. |
| Caguas (PRI) | 120 mm. |
| Lamenton (GLP) | 114 mm. |
| Baie-Mahault (GLP) | 114 mm. |
| Saint-Franois (GLP) | 114 mm. |

Automatically generated alert powered by:
ADAM - Automated Disaster Analysis and Mapping

17 September 2022 09:30:27 GMT

Please report errors to fwf.gis@wfp.org. Report ID: 100001812. Coordinate system: EPSG:31466. Data sources: GDACS, Landsat 2018, Gaia, WFP, ESRI. The designations employed and the presentation of material in this map do not imply the expression of any opinion whatsoever of WFP concerning the legal or constitutional status of any country, territory or sea area, or concerning the delimitation of frontiers.

FIONA-22 - Population Exposure Estimation based on bulletin n. 12

The population exposure, summarized by Admin 0, 1 and 2, has been calculated using a 1 km resolution Landsat raster (Landsat Database 2018). Admin boundaries are defined by Gaia 2015 dataset. Windspeed buffers are produced by GDACS (JRC). This is a preliminary analysis and has not yet been validated in the field.

Analysis performed by ADAM (Automated Disaster Analysis and Mapping) on 17-09-2022 at 09:28 UTC
Contact: hq.gis@wfp.org

| ADM0_NAME | ADM1_NAME | ADM2_NAME | POPULATION | | | TOTAL |
|---------------------------|------------------|-----------|------------|---------|----------|---------|
| | | | 60 km/h | 90 km/h | 120 km/h | |
| Anguilla | Blowing Point | — | 786 | — | — | 786 |
| | Dog Island | — | — | — | — | — |
| | George Hill | — | 1.650 | — | — | 1.650 |
| | Island Harbour | — | 3.003 | — | — | 3.003 |
| | Long Bay Village | — | 1.207 | — | — | 1.207 |
| | Scrub Island | — | — | — | — | — |
| | South Hill | — | 1.686 | — | — | 1.686 |
| Anguilla - TOT | Stoney Ground | — | 4.700 | — | — | 4.700 |
| | The Valley | — | 2.418 | — | — | 2.418 |
| Antigua and Barbuda | Barbuda | — | 15.450 | — | — | 15.450 |
| Antigua and Barbuda - TOT | Redonda | — | 1.885 | — | — | 1.885 |
| | Saint John | — | 10.713 | 10.713 | — | 21.426 |
| | Saint George | — | 51.244 | 51.244 | — | 102.488 |
| | Saint Mary | — | 8.067 | 8.067 | — | 16.134 |
| | Saint Paul | — | 10.031 | 10.031 | — | 20.062 |
| | Saint Peter | — | 8.526 | 8.526 | — | 17.052 |
| | Saint Philip | — | 3.531 | 3.531 | — | 7.062 |
| Antigua and Barbuda - TOT | — | 93.997 | 92.112 | — | 186.109 | |

**ADAM Flood
Forecast**

**ADAM Flood
Impact Analysis**

**ADAM Flood
Monitoring**



Day 0 – next 14 days

First 72 hours

Long Floods
1-3 months or more

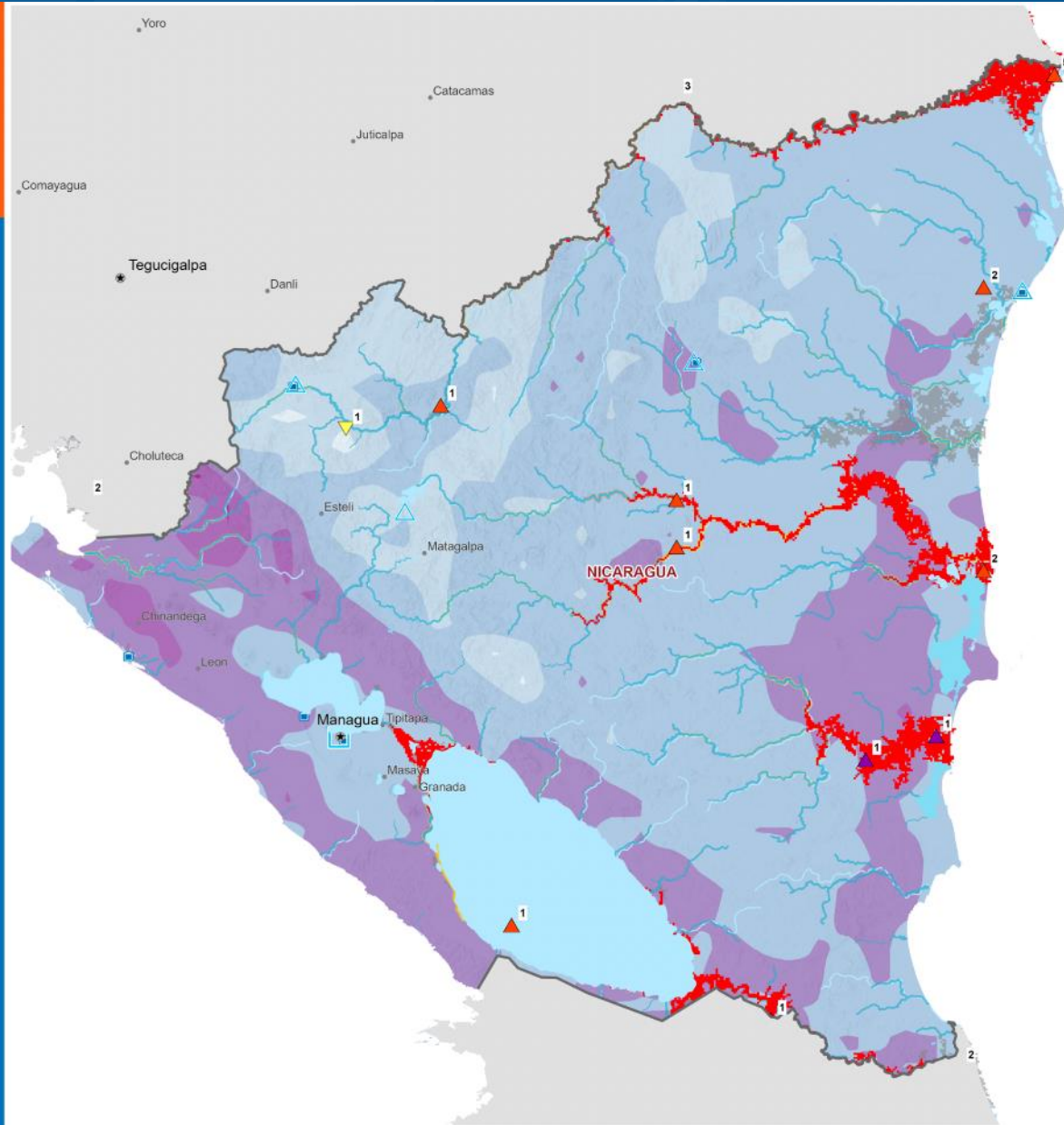
ADAM Floods - Forecast



FLOOD Alert

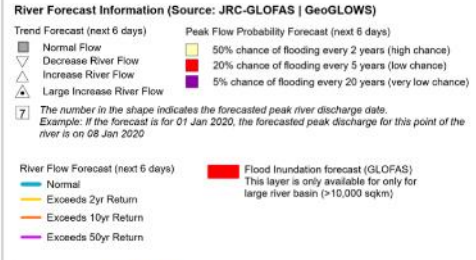
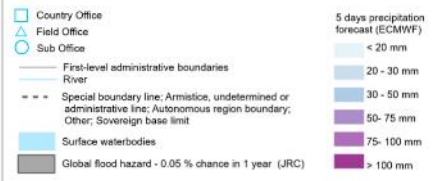
Nicaragua

Rainfall & river flood forecast from 11 Oct - 18 Oct



Potential populated places of concern

| Locality | Alert | Peak flow | River |
|-------------------------|-------|-----------|-------------------|
| Rivas | 2 | 12 | Oct Unnamed River |
| Masaya | 2 | 12 | Oct Unnamed River |
| Granada | 2 | 12 | Oct Unnamed River |
| Jinotepe | 2 | 12 | Oct Unnamed River |
| Acoyapa | 2 | 12 | Oct Unnamed River |
| Nindirí | 2 | 12 | Oct Unnamed River |
| Masatepe | 2 | 12 | Oct Unnamed River |
| Ticunalespe | 2 | 12 | Oct Unnamed River |
| Juglalpa | 2 | 12 | Oct Unnamed River |
| Boaco | 2 | 12 | Oct Unnamed River |
| Matagalpa | 1 | 12 | Oct Coco |
| Jinotega | 1 | 12 | Oct Coco |
| La Ermita | 1 | 12 | Oct Coco |
| San Sebastián De Yua | 1 | 12 | Oct Coco |
| San Rafael Del Norte | 1 | 12 | Oct Coco |
| Santa María De Pantasma | 1 | 12 | Oct Coco |
| Wimil De Jinotega | 1 | 12 | Oct Coco |
| Dani | 1 | 12 | Oct Coco |
| El Panizo | 1 | 12 | Oct Coco |
| Jitapa | 1 | 12 | Oct Coco |
| Quilali | 1 | 12 | Oct Coco |
| Skuna | 2 | 12 | Oct Unnamed River |
| Río Blanco | 2 | 12 | Oct Unnamed River |
| Matiguas | 2 | 12 | Oct Unnamed River |
| El Cuá | 2 | 12 | Oct Unnamed River |
| San José De Bocay | 2 | 12 | Oct Unnamed River |
| Waslala | 2 | 12 | Oct Unnamed River |
| Bluefields | 3 | 12 | Oct Unnamed River |



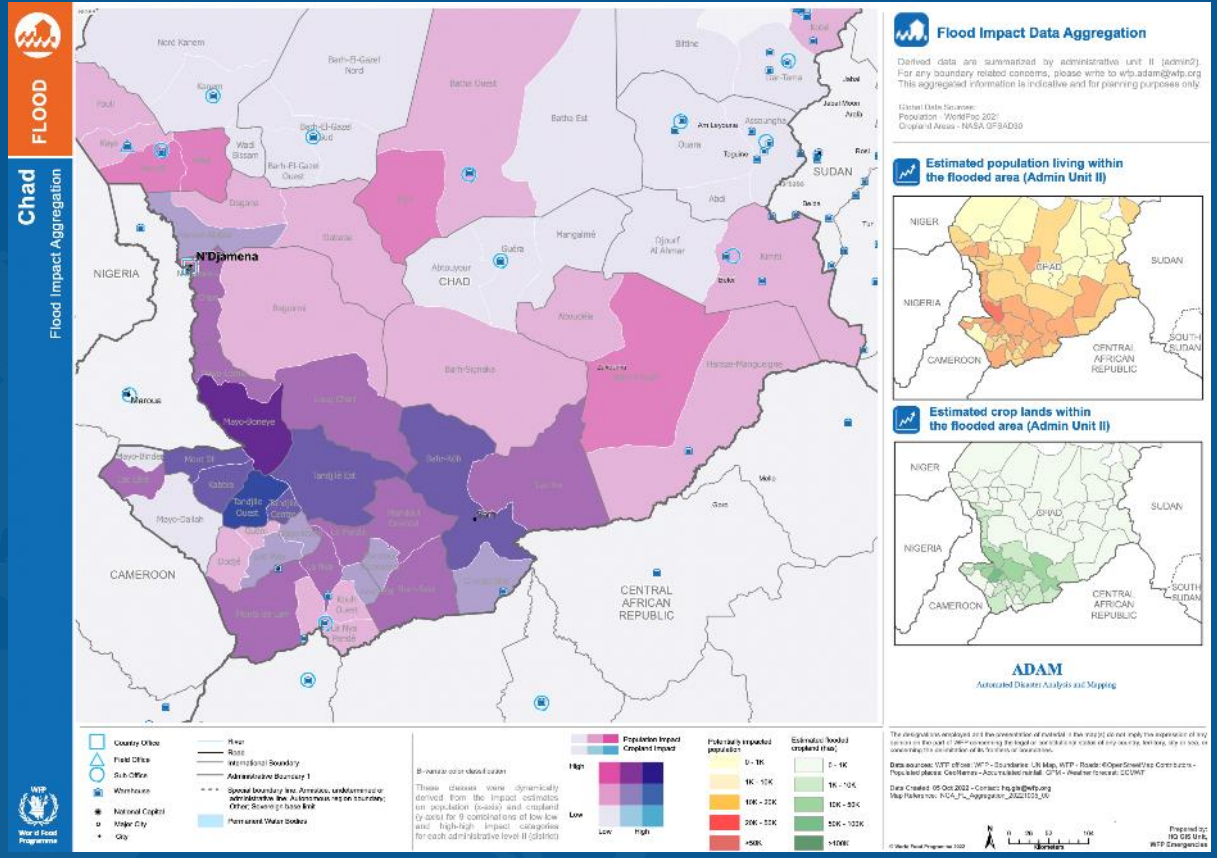
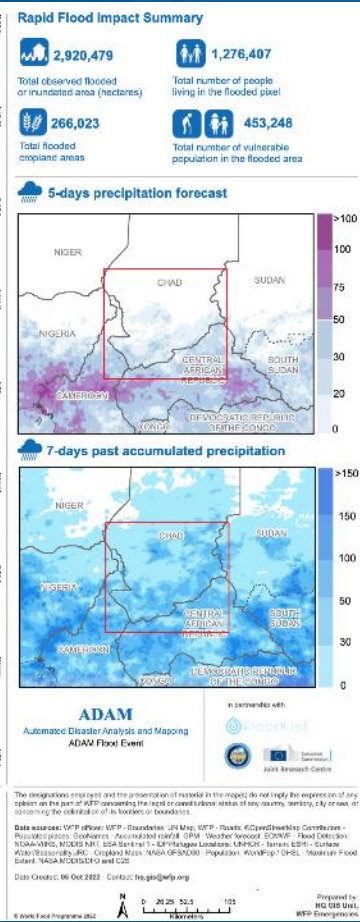
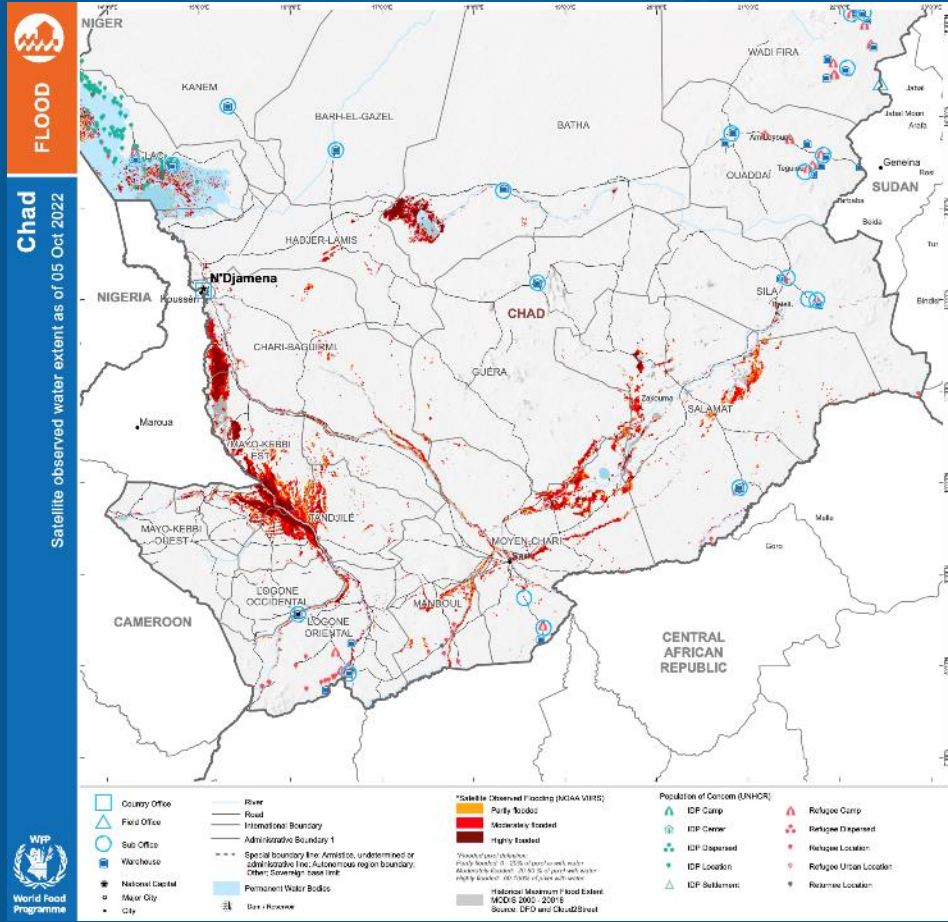
ADAM
Automated Disaster Analysis and Mapping
ADAM Floods - Alert

The designations employed and the presentation of material in the map(s) do not imply the expression of any opinion on the part of WFP concerning the legal or constitutional status of any country, territory, city or sea, or concerning the delimitation of its frontiers or boundaries.

Data sources: WFP offices; WFP - Boundaries; UN Map; WFP - Roads; ©OpenStreetMap Contributors - Populated places; GeoNames - Accumulated rainfall; GPM - Weather forecast; ECMWF

Date Created: 11 Oct 2022 - Contact: hq.gis@wfp.org
Map Reference: Alert_dashboard_beta

ADAM Floods - Event



A.D.A.M Floods - Rapid Impact Analysis

*Estimated number of people living in the flooded areas with at least 100 people potentially affected per district. Vulnerable population within flooded area are estimates from WorldPop data.

| Country Code | Region (Admin level 1) | District (Admin level 2) | Flooded Area (hectares) | Flooded Cropland (hectares) | Potentially impacted Population* | | |
|--------------|------------------------|--------------------------|-------------------------|-----------------------------|----------------------------------|---------------------|--------------------|
| | | | | | Total in District | Children (0-9 y.o.) | Elderly (>60 y.o.) |
| TCD | Barh-El-Gazel | Barh-El-Gazel Nord | 6,323 | 0 | 140 | 6 | 46 |
| | | Barh-El-Gazel Sud | 2,767 | 0 | 380 | 15 | 124 |
| | Batha | Batha Est | 6,235 | 39 | 896 | 44 | 320 |
| | | Batha Ouest | 12,941 | 35 | 1,040 | 51 | 371 |
| | | Fitri | 177,739 | 46 | 29,357 | 1,452 | 10,472 |
| | Chari-Baguirmi | Baguirmi | 57,105 | 155 | 10,155 | 419 | 3,515 |
| | | Chari | 130,438 | 3,019 | 53,112 | 1,686 | 12,953 |
| | | Loug-Chari | 114,666 | 4,041 | 24,457 | 998 | 8,475 |
| | Guéra | Barh-Signaka | 91,163 | 186 | 6,351 | 314 | 2,265 |
| | | Dababa | 37,479 | 202 | 7,295 | 302 | 2,534 |
| | Hadjer-Lamis | Dagana | 7,193 | 370 | 3,193 | 132 | 1,109 |
| | | Haraze-Al-Biar | 27,583 | 1,477 | 19,099 | 784 | 6,647 |
| | | Nord Kanem | 9,912 | 0 | 205 | 8 | 67 |
| | Lac | Fouli | 17,211 | 4 | 4,524 | 183 | 1,478 |
| | | Kaya | 23,530 | 3 | 4,432 | 180 | 1,448 |
| | | Mamdi | 153,021 | 182 | 37,920 | 1,538 | 12,391 |
| | | Wayi | 30,792 | 105 | 21,415 | 870 | 7,050 |

ADAM about page | gis.wfp.org/adam



World Food
Programme

SAVING
LIVES
CHANGING
LIVES

Advanced Disaster Analysis and Mapping (ADAM)

WFP's corporate geospatial solution for emergency preparedness, early
warning & response

ADAM Features

ADAM about page – gis.wfp.org/adam

ADAM Alerts – ADAM report sent via email if subscribed (Floods, Earthquakes, Tropical Storm)

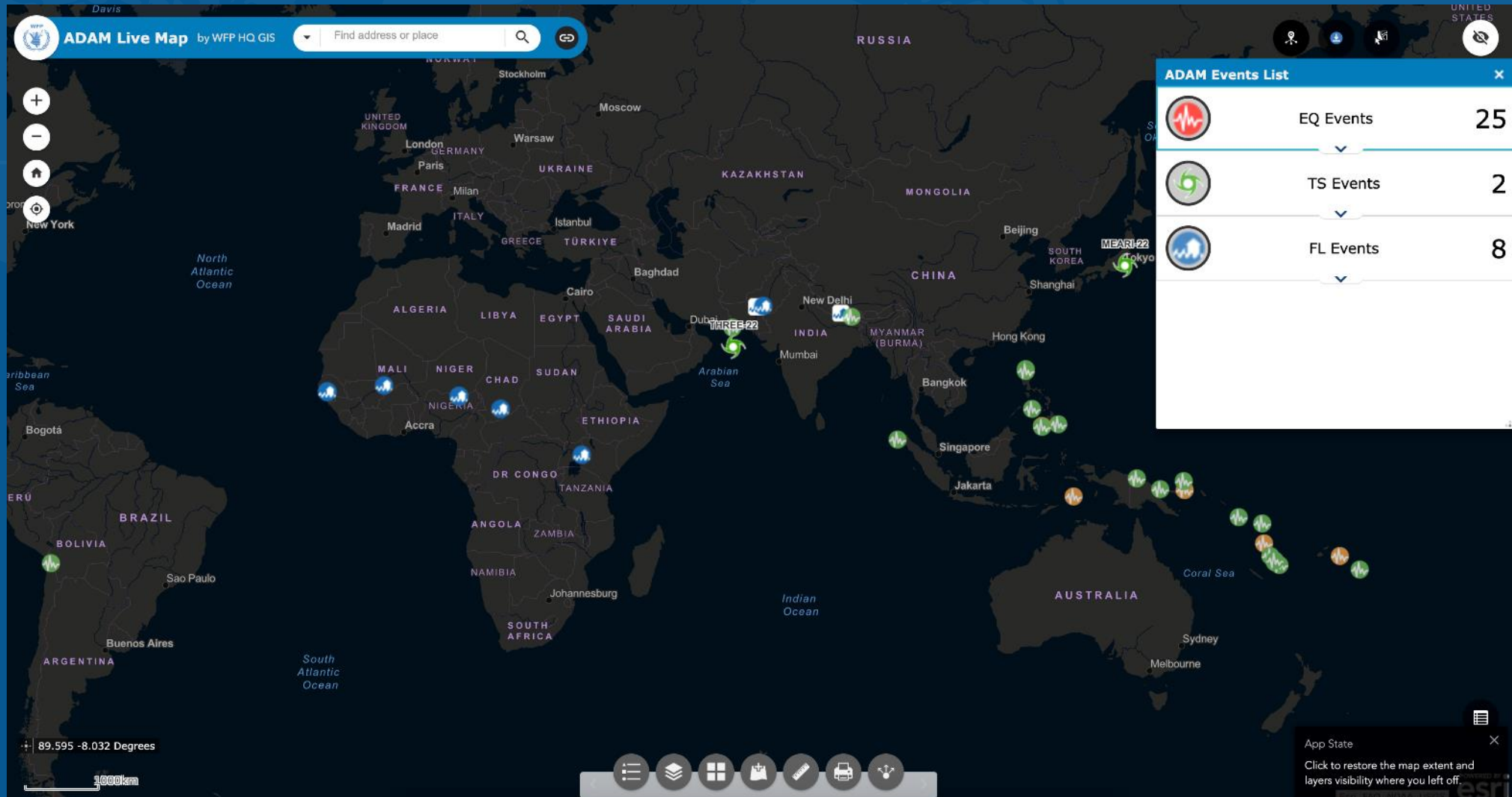
ADAM Live Map – View last 14 days of events and download GIS data

ADAM Dashboard – download historical ADAM events


ADAM API – programmatically access historical events, reports, disaster data

ADAM Annual Report

ADAM LIVE MAP | gis.wfp.org/adamlive



ADAM dashboard



World Food Programme

- Home
- Earthquakes
- Floods**
- Tropical Storms

App Settings

Filter displayed records.

Start Date
2016/01/01

End Date
2023/07/14

Aggregate Events By
Event Date

© 2023, Advanced Disaster Analysis and Mapping (ADAM). All rights reserved.

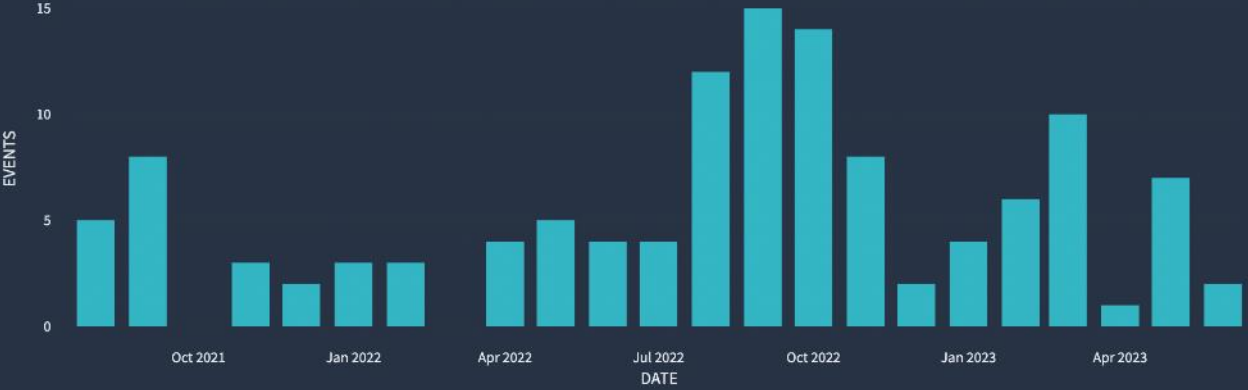
Contact: wfp.adam@wfp.org. Live Map: [ADAM Live Map](#). Data API: [WFP ADAM API](#).

ADAM Floods.

This page shows ADAM Floods records from 2016-01-01 to 2023-07-14.

[Flood Events](#) [Flood Subscribers](#)

Floods Events grouped by Date



| DATE | EVENTS |
|----------|--------|
| Oct 2021 | 5 |
| Nov 2021 | 8 |
| Dec 2021 | 3 |
| Jan 2022 | 2 |
| Feb 2022 | 3 |
| Mar 2022 | 3 |
| Apr 2022 | 4 |
| May 2022 | 5 |
| Jun 2022 | 4 |
| Jul 2022 | 4 |
| Aug 2022 | 12 |
| Sep 2022 | 15 |
| Oct 2022 | 14 |
| Nov 2022 | 8 |
| Dec 2022 | 2 |
| Jan 2023 | 4 |
| Feb 2023 | 6 |
| Mar 2023 | 10 |
| Apr 2023 | 1 |
| May 2023 | 7 |
| Jun 2023 | 2 |

Flood Events Table

| id | iso3 | country | rb | flood_area | fl_croplnd | population | date | download |
|-------------------------------------|------|----------------|-----|------------|------------|------------|------------|---------------------------------|
| <input type="checkbox"/> FL-2023... | CUB | Cuba | RBP | 75959 | 45981 | 56198 | 2023-06-12 | Click to dow... |
| <input type="checkbox"/> FL-2023... | HTI | Haiti | RBP | 51845 | 42118 | 434174 | 2023-06-08 | Click to dow... |
| <input type="checkbox"/> FL-2023... | SOM | Somalia | RBN | 246525 | 47441 | 333905 | 2023-05-18 | Click to dow... |
| <input type="checkbox"/> FL-2023... | MMR | Myanmar | RBB | 402004 | 297436 | 615368 | 2023-05-18 | Click to dow... |
| <input type="checkbox"/> FL-2023... | MMR | Myanmar | RBB | 276486 | 368701 | 479895 | 2023-05-16 | Click to dow... |
| <input type="checkbox"/> FL-2023... | COD | Congo, The ... | RBJ | 174001 | 36173 | 344012 | 2023-05-08 | Click to dow... |
| <input type="checkbox"/> FL-2023... | UGA | Uganda | RBN | 278647 | 61395 | 672793 | 2023-05-08 | Click to dow... |

ADAM API

ADAM API v0.1.0 OAS3

/dev/openapi.json

Advanced Disaster Analysis and Mapping (ADAM)

[ADAM Dev Team - Website](#)

[Send email to ADAM Dev Team](#)

Servers

/dev

Event Feed ^

GET /events/feed Recent Events ∨

Earthquakes ^

GET /events/earthquakes Adam Earthquakes ∨

GET /events/earthquakes/{event_id} Adam Earthquake Event ∨

Cyclones ^

GET /events/cyclones Tropical Cyclones ∨

GET /events/cyclones/{event_id} Tropical Cyclone Event ∨

Floods ^

GET /events/floods Get Flood Events ∨

ADAM in HDX (soon)

THIS IS A DEMO SERVER THIS IS A DEMO SERVER THIS IS A DEMO SERVER THIS IS A DEMO SERVER THIS IS A DEMO SERVER THIS IS A DEMO SERVER THIS IS A DEMO SERVER THIS IS A DEMO SERVER THIS IS A DEMO SERVER THIS IS A DEMO SERVER THIS IS A DEMO SERVER

OCHA Services ? FAQ | Log in | Sign up | Switch to HDX Lite

HDX Search Datasets DATA | LOCATIONS | ORGANISATIONS | DATAVIZ ADD DATA

HOME / ORGANISATIONS / ADVANCED DISASTER ANALYSIS & MAPPING /

Advanced Disaster Analysis & Mapping

11 Datasets - 0 Archived Datasets - 3 Members - 0 Followers - [Visit Website](#)
Member since 22 February 2023

ADAM is an operational system for collecting, analysing and mapping geospatial and socio-economic information following sudden onset humanitarian emergencies. Currently operational for floods, earthquakes and tropical storms, ADAM issues alerts and response dashboards aggregating relevant, evidence-based, near-real time risk and impact information.

[Twitter](#) [Facebook](#) [RSS](#)

Datasets Activity Stream Stats

Data Datasets [27] | Archived Datasets[0] [?] Search all datasets ... SHOW FILTER: SHOW 25 ORDER BY

Refine your search: [Clear all](#)

FEATURED: -

- CODs [\[Learn more\]](#) [0]
- Sub-national [0]
- Geodata [10]
- Administrative Divisions [0]
- Datasets on request (HDX Connect) [0]
- Datasets with Quick Charts [0]
- Datasets with Showcase [1]
- Datasets with HXL tags [0]

Madagascar: Cyclone - Tropical storm - Feb 2022
Advanced Disaster Analysis & Mapping
Updated 15 June 2023 | Reference Period: February 16, 2022-February 24, 2022
This dataset updates: Never

A cyclone (tropical storm) during the period Feb 16 2022-Feb 24 2022 in Madagascar. It impacted 2331603 people.
[SHP](#) [XLSX](#) [Download](#)

Dominican Republic: Cyclone - Tropical storm - Sep 2022
Advanced Disaster Analysis & Mapping
Updated 15 June 2023 | Reference Period: September 14, 2022-September 24, 2022
This dataset updates: Never

A cyclone (tropical storm) during the period Sep 14 2022-Sep 24 2022 in Canada, Turks and Caicos Islands, Dominican Republic, Puerto Rico. It impacted 2809830 people.
[SHP](#) [XLSX](#) [Download](#)

WFP ADAM Partners



EARTH SCIENCE
APPLIED SCIENCES



HDX



ADAM by the numbers

- 2,300+ unique subscribers and users
- 200+ major & minor disasters analyzed since 2014
- 20+ humanitarian and aid organizations/partners



Thank you!