

Current nutrition IM

Data Collection and Data visualization

- Updating 4Ws – Twice a year
- Updating contact list – as needed
- (3W-NIS) Nutrition partner data collection, analysis and compilation – monthly (*10th of the month*)
- Updating HRP dashboard- Monthly

Reports

- Monthly UNICEF Sit-reps and HPM report *IM support figures and coordinator is needed to prepare narrative*
- Quarterly HRP reports - OCHA *IM support figures and coordinator is needed to prepare narrative*
- Monthly Humanitarian update - OCHA
- Global Nutrition Cluster reports - (twice a year)
- Support nutrition HRP process such as PIN, target and costing
- Uploading and sharing updated data/information in the sector link

Humanitarian Response Plan HRP data flow

HRP progress sharing to the cluster, GNC, HAC, OCHA



National data collection, analysis, compilation, updating HRP progress dashboard

COB 10th of the month



Sub-national data collection, analysis and compilation

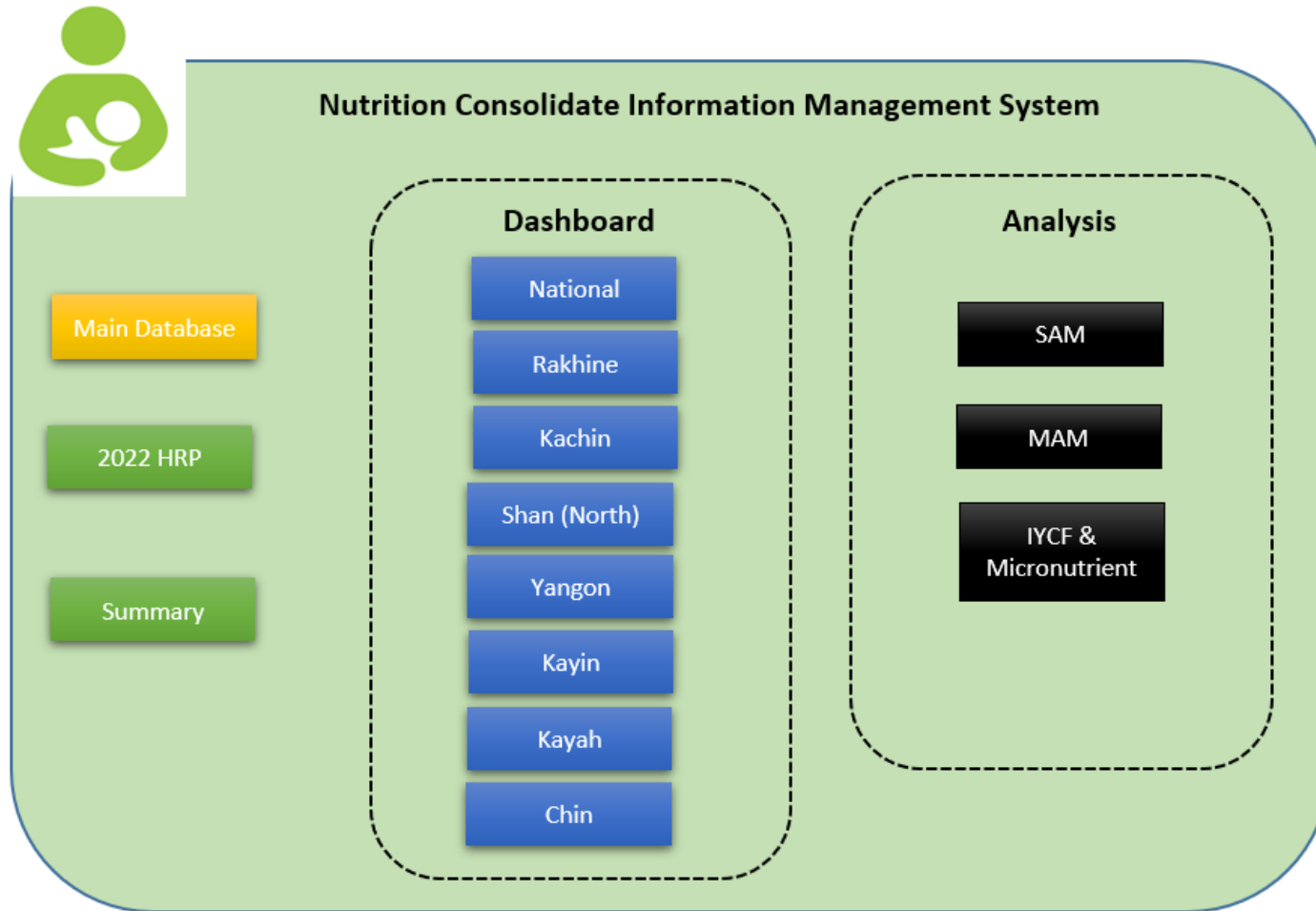


Cluster partners

GI Admin1			
Ayeyarwady	Chin	Kachin	Kayah
Kayin	Magway	Nay Pyi Taw	Rakhine
Sagaing	Shan (North)	Shan (South)	Yangon

Partners Reporting Form			
General information			
Agency acronym		Agency name	
Reporting week		Reporting month	
Reporting year		Date of report submission (ED/MM/YY)	
State		Township	
Village tract		Village	
Camp		Has expanded admission criteria been used?	
Stabilization Center (SC)		Out-Patient Therapeutic Center (OTPC)	
Community level Treatment site (BSFP)		Targeted Supplementary Feeding site (TSFP)	
P.Code Admin1	#N/A	P.Code Admin2	#N/A
P.Code Admin3	#N/A	P.Code Admin4	#N/A
P.Code Admin5	#N/A	Status of the site	
		Status of the site	
		Status of the site	Operational
		Status of the site	
Screening and Referral			
Boys 6-59 months	Screening (MUAC measurements)	Number screened No. of Boys with bilateral oedema No. of Boys with red MUAC (<11.5 cm) No. of Boys 6-59m with yellow MUAC (<11.5 cm to <12.5 cm) No. of Boys 6-59m with green MUAC (<12.5 cm)	0
	Referral	No. of Boys 6-59m referred to OTP No. of Boys 6-59m referred to TSFP	
	Automatic calculations Screening and Referral	Total no. (Boys+Girls) screened Total no. (Boys+Girls) oedema Total no. (Boys+Girls) Red Total no. (Boys+Girls) Yellow Total no. (Boys+Girls) Green Total no. (Boys+Girls) referred to OTP Total no. (Boys+Girls) referred to TSFP % of (Boys+Girls) oedema % of (Boys+Girls) Red % of (Boys+Girls) Yellow % of (Boys+Girls) Green % of (Boys+Girls) referred to TFP % of (Boys+Girls) referred to TSFP	0 #VALUE! #VALUE! #VALUE! #VALUE! #VALUE! #VALUE! #VALUE! #VALUE! #VALUE! #VALUE!
Girls 6-59 months	Screening (MUAC measurements)	Number screened No. of Girls with bilateral oedema No. of Girls 6-59m with red MUAC (<11.5 cm) No. of Girls 6-59m with yellow MUAC (<11.5 cm to <12.5 cm) No. of Girls 6-59m with green MUAC (<12.5 cm)	0
	Referral	No. of Girls 6-59m referred to OTP No. of Girls 6-59m referred to TSFP	
	Automatic calculations Screening and Referral	Total no. (Boys+Girls) screened Total no. (Boys+Girls) oedema Total no. (Boys+Girls) Red Total no. (Boys+Girls) Yellow Total no. (Boys+Girls) Green Total no. (Boys+Girls) referred to OTP Total no. (Boys+Girls) referred to TSFP % of (Boys+Girls) oedema % of (Boys+Girls) Red % of (Boys+Girls) Yellow % of (Boys+Girls) Green % of (Boys+Girls) referred to TFP % of (Boys+Girls) referred to TSFP	0 #VALUE! #VALUE! #VALUE! #VALUE! #VALUE! #VALUE! #VALUE! #VALUE! #VALUE! #VALUE!
Pregnant & Lactating Women	Screening (MUAC measurements)	Number screened No. of PLW with MUAC <21.0 cm No. of PLW with MUAC >21.0 cm to <23.0 cm No. of PLW with MUAC >23.0 cm	0
	Referral	No. of PLW referred to OTP No. of PLW referred to TSFP	
	Automatic calculations PLW	% MUAC <21.0 cm % MUAC >21.0 cm to <23.0 cm % MUAC >23.0 cm % of PLW referred to OTP % of PLW referred to TSFP	
Boys 6-59 months	Screening (VHZ)	Number screened No. of Boys Male with bilateral oedema No. of Boys with Z-scores <-3 No. of Boys with Z-scores <-3 and <-2 No. of Boys with Z-scores <-2 No. of Boys referred to OTP No. of Boys referred to TSFP	0
	Referral	No. of Boys referred to OTP No. of Boys referred to TSFP	
	Automatic calculations Screening and Referral	Total no. (Boys+Girls) screened Total no. (Boys+Girls) oedema No. of Boys with Z-scores <-3 No. of Boys with Z-scores <-3 and <-2 No. of Boys with Z-scores <-2 Total no. (Boys+Girls) referred to OTP Total no. (Boys+Girls) referred to TSFP % of (Boys+Girls) oedema % of (Boys+Girls) referred to TFP % of (Boys+Girls) referred to TSFP	0 #VALUE! #VALUE! #VALUE! #VALUE! #VALUE! #VALUE! #VALUE! #VALUE! #VALUE!
Girls 6-59 months	Screening (VHZ)	Number screened No. of Girls with bilateral oedema No. of Girls with Z-scores <-3 No. of Girls with Z-scores <-3 and <-2 No. of Girls with Z-scores <-2 No. of Girls referred to OTP No. of Girls referred to TSFP	0
	Referral	No. of Girls referred to OTP No. of Girls referred to TSFP	
	Automatic calculations Screening and Referral	Total no. (Boys+Girls) screened Total no. (Boys+Girls) oedema No. of Girls with Z-scores <-3 No. of Girls with Z-scores <-3 and <-2 No. of Girls with Z-scores <-2 Total no. (Boys+Girls) referred to OTP Total no. (Boys+Girls) referred to TSFP % of (Boys+Girls) oedema % of (Boys+Girls) referred to TFP % of (Boys+Girls) referred to TSFP	0 #VALUE! #VALUE! #VALUE! #VALUE! #VALUE! #VALUE! #VALUE! #VALUE! #VALUE!
Management of Severe Acute Malnutrition - Inpatient			
Children 6-59 months	Entry categories	Total end of last time period: Boys (A) Total end of last time period: Girls (B) New admissions: Boys (B1) New admissions: Girls (B2)	Automatic calculations Children 6-59m Total admissions Boys (D+B-C) Total Admissions Girls (D-B-C)
			0 0 0 0
Instructions Site1 Site2 Site3 Site4 Site5 Site6 Site7 Site8 Site9 Site10 Site11 Site12 Site			

Nutrition Cluster Information Products



Nutrition Cluster Information Products

Sector link :

<https://drive.google.com/drive/folders/1z0NqUfb4nMWkeIDUNVISry0VozFYvP2C>

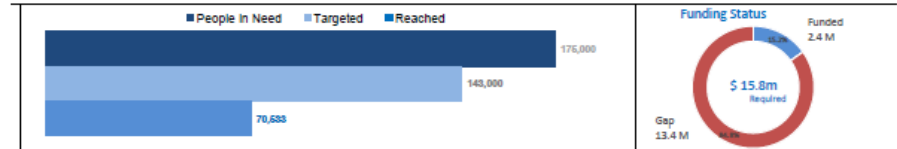
Myanmar: Nutrition Sector Dashboard 2020 as of November 2020



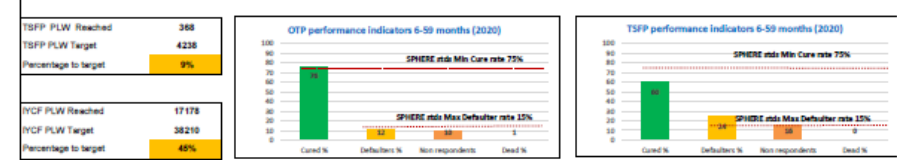
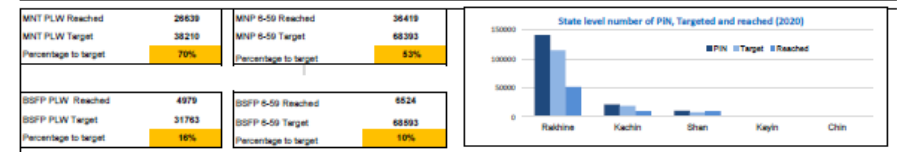
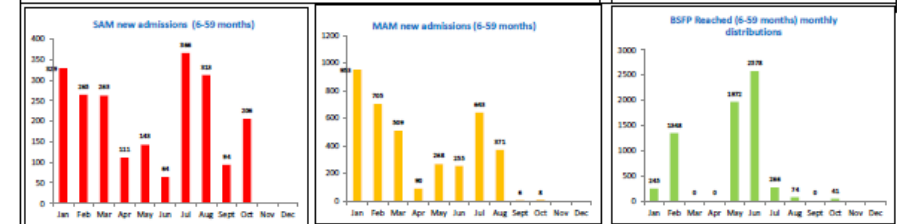
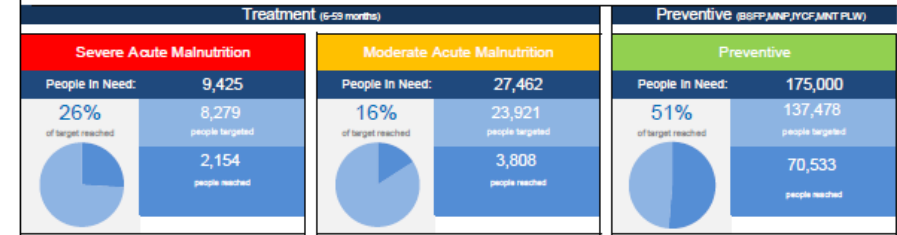
CLUSTER OBJECTIVES

As per the HRP

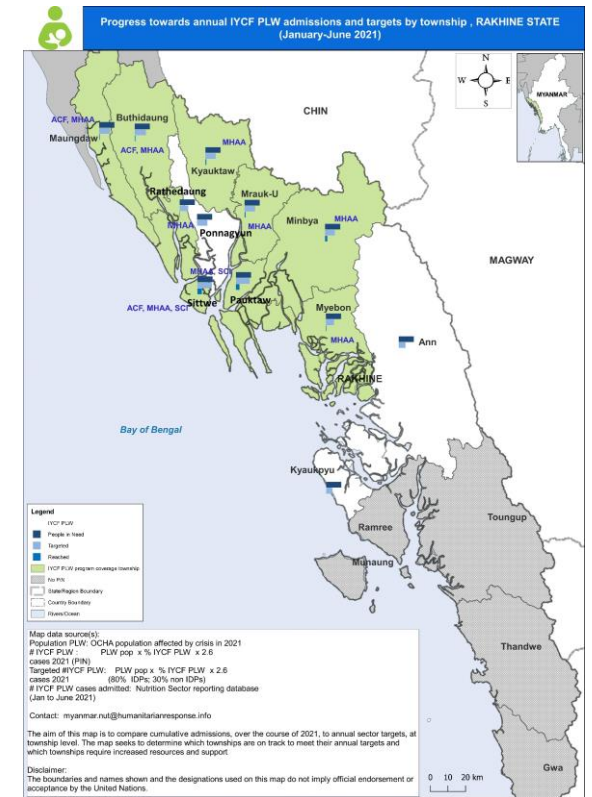
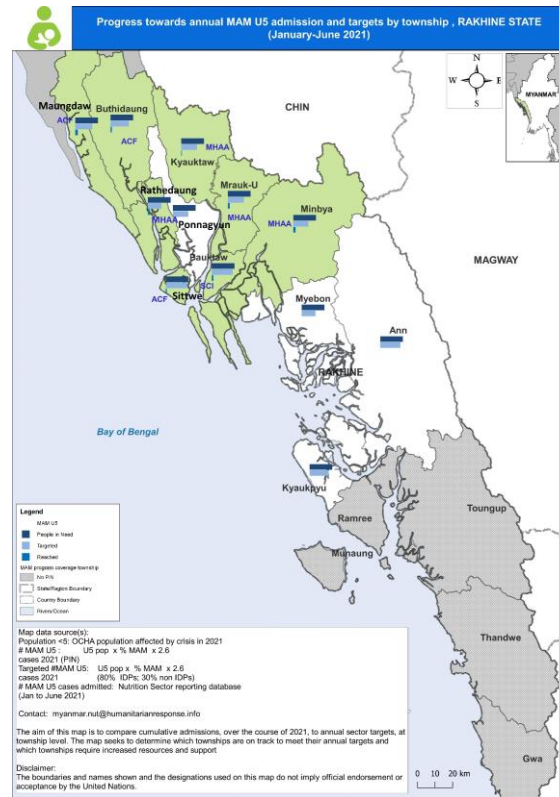
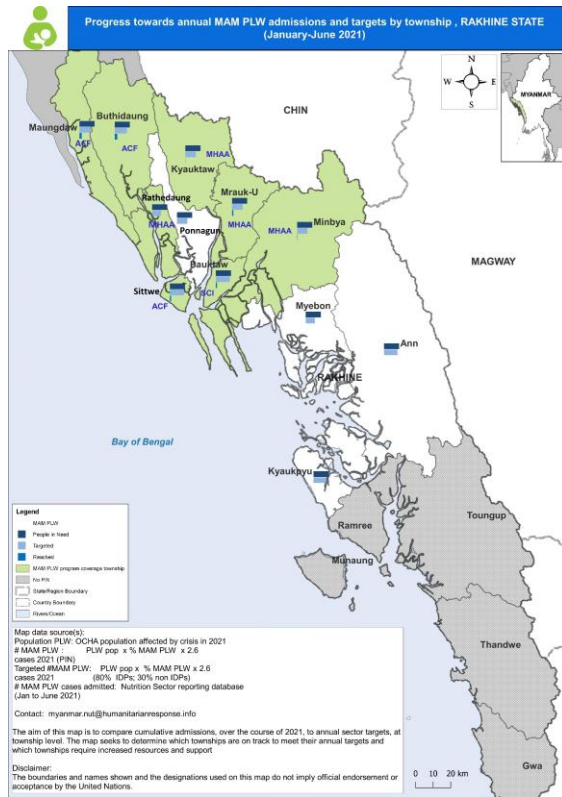
- 1 Specific Objective 1: Children and women with acute malnutrition access appropriate management services.
- 2 Specific objective 2: Nutritionally vulnerable children and women access prevention/nutrition-specific services.



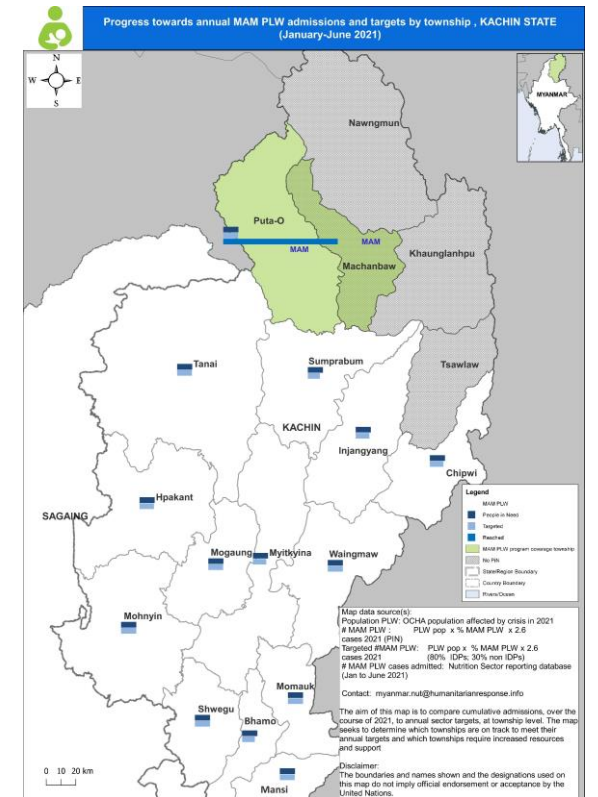
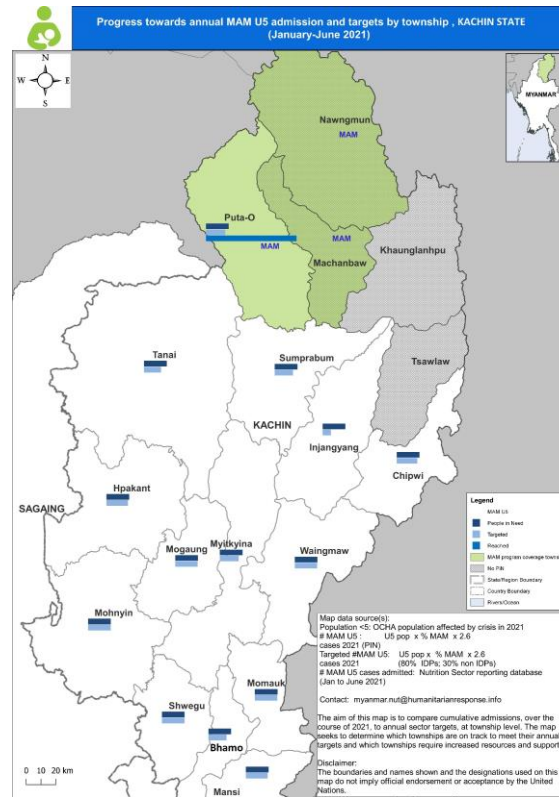
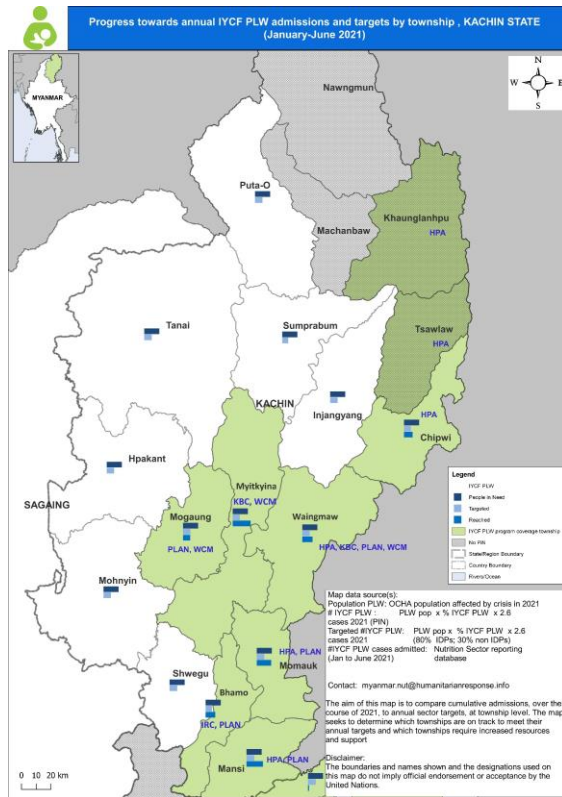
Nutrition Response is Broken Down into Treatment and Preventive Response



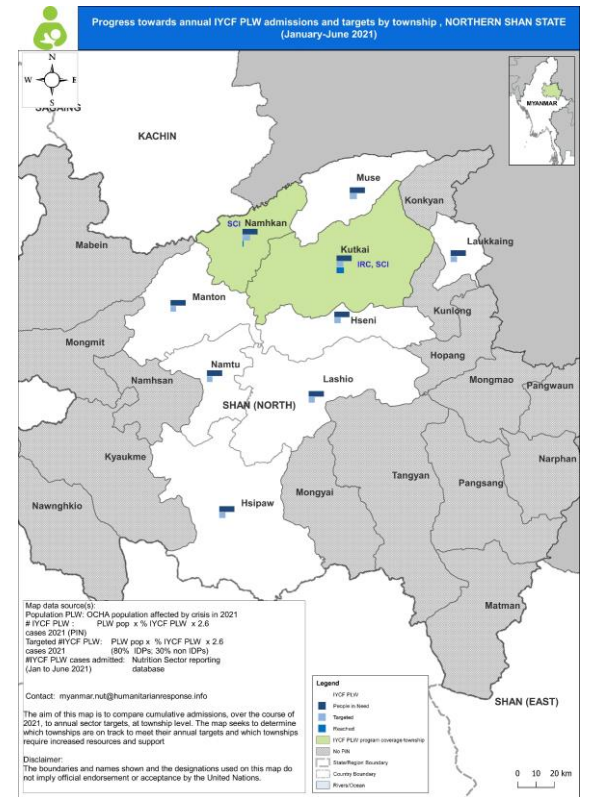
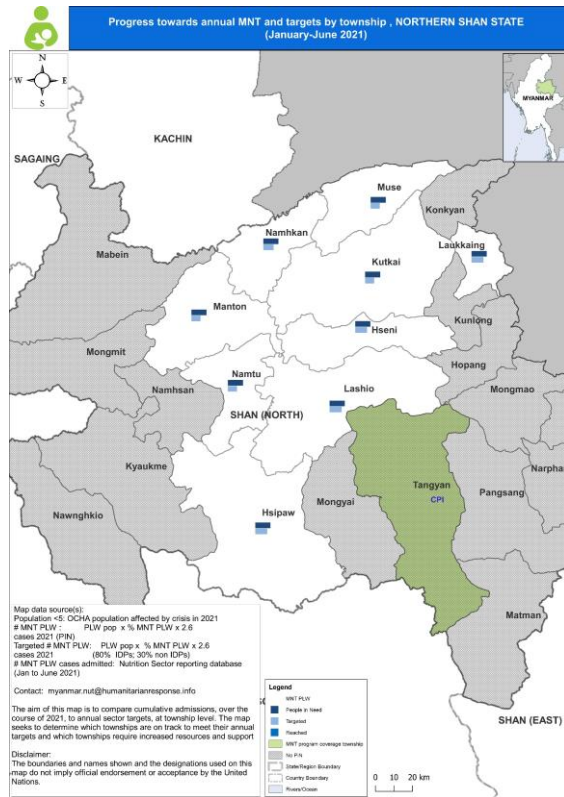
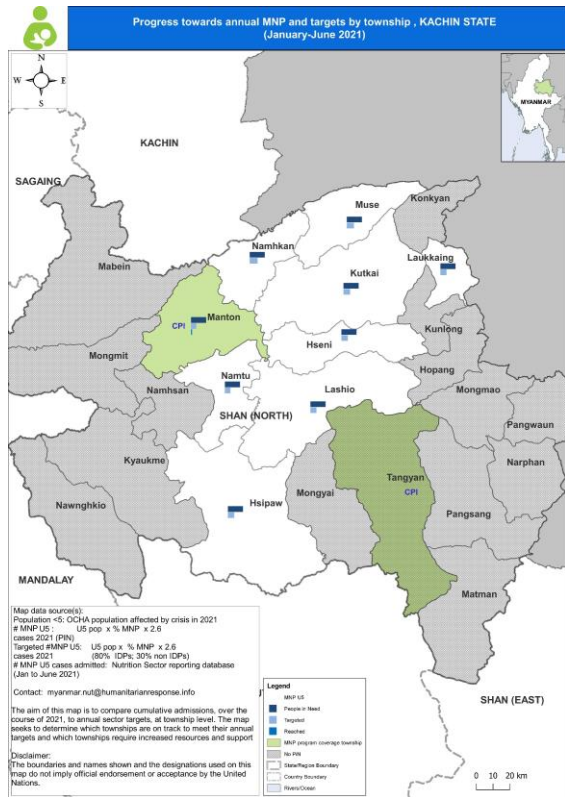
Updated Date : Oct 2020 | Data sources : Nutrition Sector



Rakhine Nutrition Cluster Information Products



Kachin Nutrition Cluster Information Products



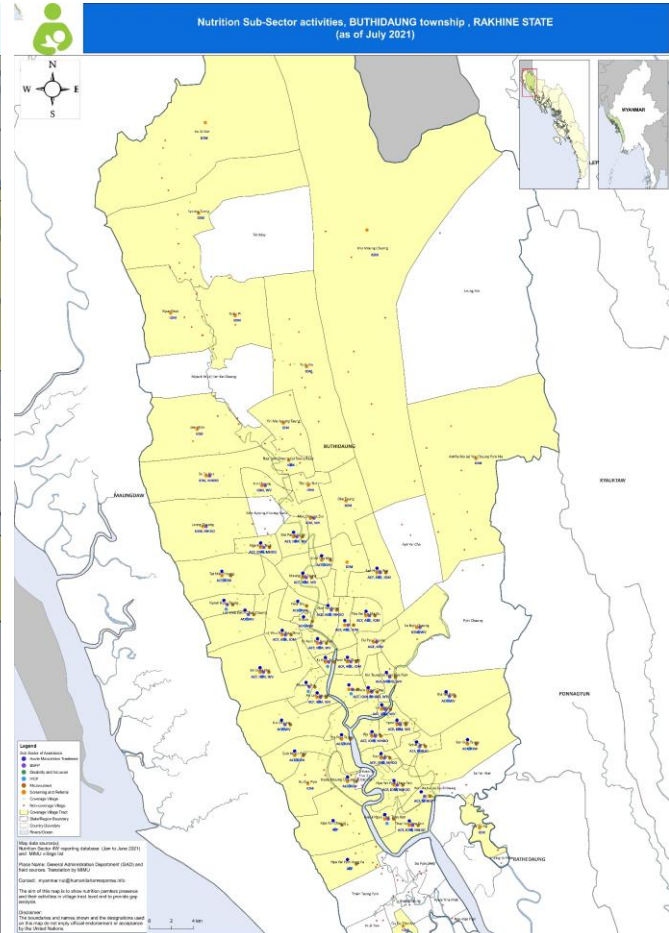
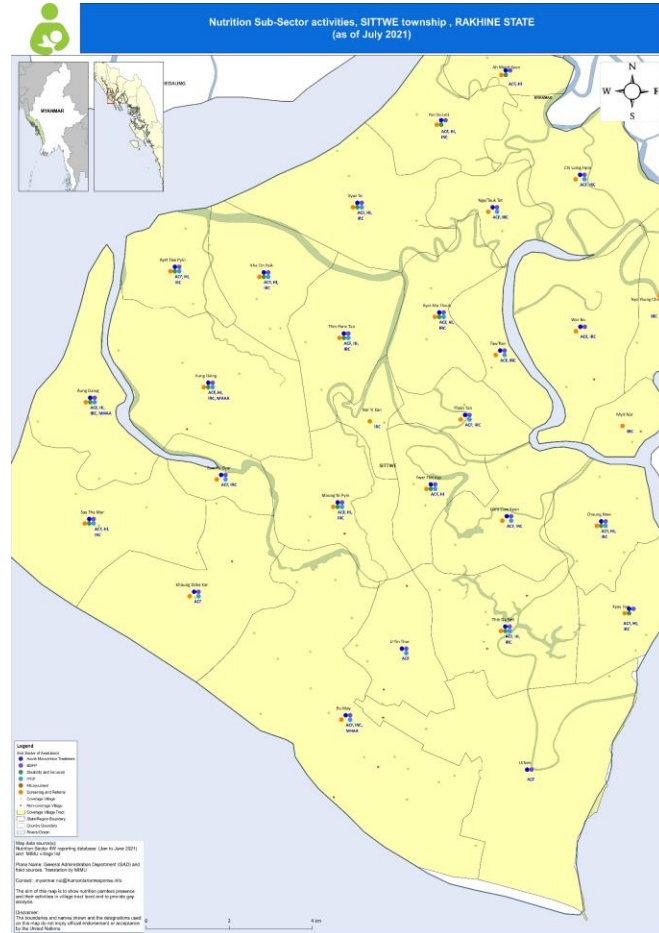
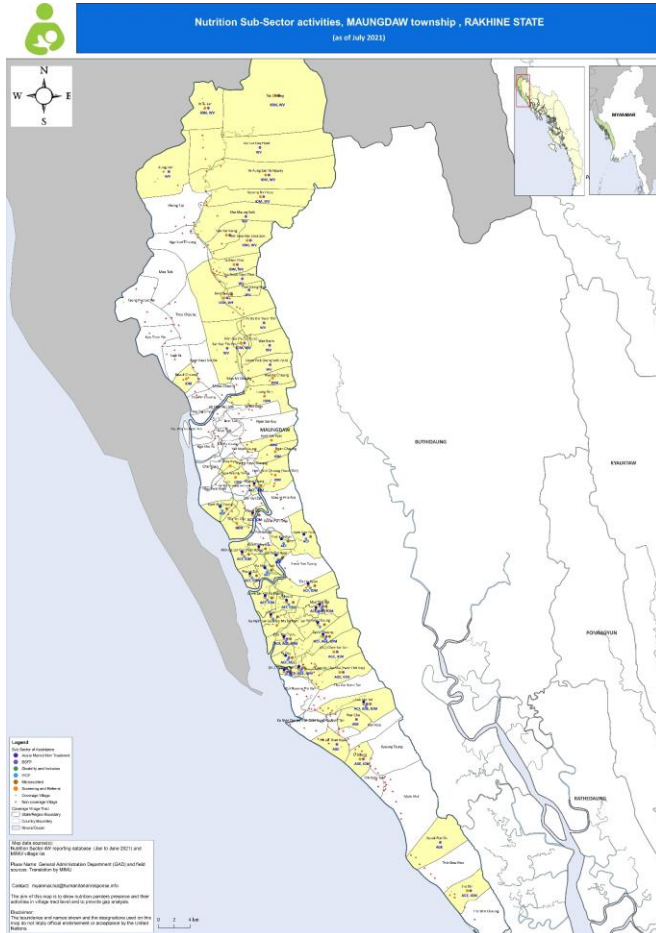
Northern Shan - Nutrition Cluster Information Products

Nutrition Sector 4W – Implementing Partners (as of November 2022)

State/region	# of partners	# of Agency	Type of agency	# of Partner	# of Agency
Chin	11	7	Border Based Organization	7	1
Kachin	37	16	Community Based Organization	1	1
Kayah	4	1	Donor	14	5
Kayin	28	15	Embassy	1	1
Kunming	1	1	International NGO	168	37
Magway	6	5	Learning institutions	1	1
Mandalay	1	1	National NGO	82	24
Monywa	1	1	Others	3	2
Nay Pyi Taw	17	8	Red Cross	8	2
NorthWest	1	1	United Nations	69	10
Other	2	2	Grand Total	354	84
Rakhine	47	19			
remote	2	2			
Sagaing	3	3			
Shan (North)	40	16			
Shan (South)	2	1			
Yangon	151	52			

- 15 state/regions
- 84 Implementing Partners

Rakhine- Nutrition Cluster 4W Products



Nutrition Cluster 3W/4W reporting templates

To download the files from the links:

- [Nutrition 4W reporting template](#)
- [Nutrition monthly 3W- NIS partner reporting template](#)

Thank You