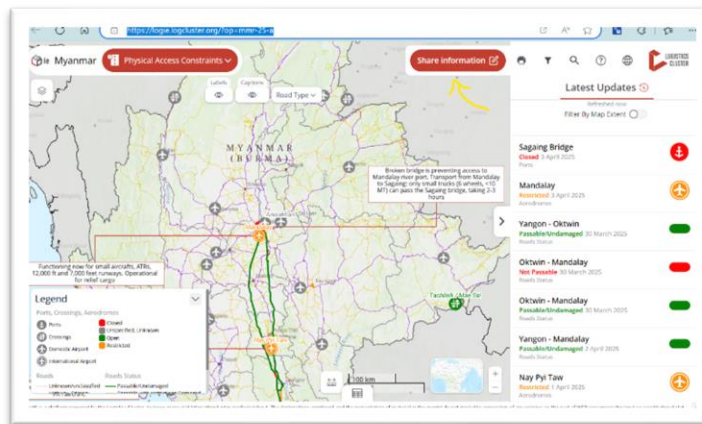


## 1. Overview

- Rapid needs assessments indicate the following challenges: storage in the affected areas (Mandalay and Sagaing), and transport facilitation. Other challenges reported by partners entail the importation of relief, obtaining authorizations and definition of consignee upon arrival, access and visa constraints, and limited market information.
- Road access information to remote areas, especially in Sagaing remains limited.
- Logistics Cluster staff deployed in Bangkok and Yangon.

## 2. Coordination & Information Management

- National logistics coordination meetings are held online twice a week, every Tuesday and Friday. **Today's meeting minutes are available here:** [Myanmar - Meeting Minutes, Logistics Coordination Meeting - 8 April 2025 | Logistics Cluster Website](#)
- **The next meeting is scheduled for Friday, April 11 at 2PM Yangon time (GMT +06:30).**
- To sign up for the mailing list to receive operational updates, invitations to meetings, and join the WhatsApp group, contact [global.logcluster@wfp.org](mailto:global.logcluster@wfp.org) or click on ["sign up for our mailing list" on the operational webpage.](#)
- Information on customs clearance and importation procedures can be obtained by reaching out to the "IMPortation and Customs Clearance Together" (IMPACCT) working group: [impacct.2021@gmail.com](mailto:impacct.2021@gmail.com)
- Collecting updated information on physical access constraints is still a major challenge. All partners are encouraged to use the dynamic mapping [LogIE for Myanmar](#) to share information on the physical condition of affected roads and rivers. *When opening LogIE (from the [Logistics Cluster website](#) or the [mobile app](#)), click on the "share information" button and follow the step-by-step instructions. [Further guidance on how to use LogIE.](#)*



## 3. Logistics Updates

### Overland transport

- Transport from Yangon to Nay Pyi Taw and Mandalay is possible without truck weight limitations (old highway). Within Mandalay city, maximum truck weight limit is of 12 MT
- Expressway Yangon-Nay Pyi Taw is now reopen to small vehicles. Larger vehicles and heavy trucks are redirected via alternate routes.
- Light Vehicles: The Yangon-Mandalay Highway Road is accessible until around milepost 352 on the expressway without any significant challenges, where divert old Mandalay Road that passing Pa Leik town of Sint Kaing township and Tada-U airport area.
- Between 163 and 168, only Yangon-Mandalay Road section will be accessible by both sides and keep maintain right side for safety reason.

### Air

- Yangon Airport (RGN): Open with limited payload and handling capacity. Department of Civil Aviation granted a weight limit waiver (50MT) due to refuelling limitations in Yangon.
- Nay Pyi Taw Airport (NYT): relief flights and commercial passenger flights are operating, and only during daytime. Refer to ICAO guidelines
- Mandalay Airport (MDL): Operational for small aircraft (ATRs). Rehabilitation of the landing area is in progress.
- Airlink is evaluating partners' requirements for onward deployment from Bangkok and Chiang Mai Airports (Thailand) to Myanmar, due to visa restrictions at YGN airport.

### Airlift

- EUHAB flight carrying humanitarian cargo arriving on April 9th; additional EUCPM cargo consigned to UNHCR.
- Australian Government charter with shelter items landing on April 8th in collaboration with WFP and UNHCR.

### Storage

- Cold storage (2-8 Celsius degree) available at Yangon airport custom warehouse – however space to be confirmed by DHL upon request.
- Multiple partners using same warehouse in Mandalay. Common storage could possible based on request from partners.

---

## Contacts

Logistics Cluster

[global.logcluster@wfp.org](mailto:global.logcluster@wfp.org)

Edmondo Perrone, Head of Operations Myanmar

[Edmondo.perrone@wfp.org](mailto:Edmondo.perrone@wfp.org)