

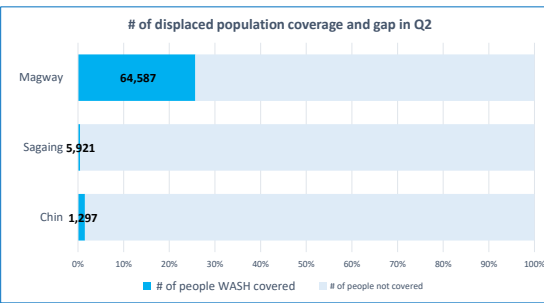
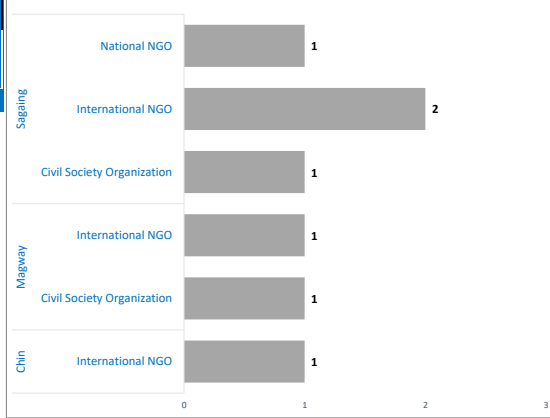
GAP Analysis - Under WASH partners management

Type of beneficiaries	State/Region	Township	# of sites	Total Population	% Water GAP	% Sanitation GAP	% Hygiene Gap	# of partners
IDP returnees	Sagaing	Kani	1	1,286	100%	100%	43%	2
IDP returnees Total			1	1,286	100%	100%	43%	
Newly IDPs	Magway	Saw	8	494	100%	100%	100%	1
	Sagaing	Kale	1	1,289	100%	100%	0%	2
		Kani	1	937	100%	100%	56%	1
		Pale	3	2,479	100%	100%	37%	2
		Shwebo	1	5,837	0%	50%	100%	1
		Tabayin	1	136	100%	100%	100%	1
		Yinmarbin	3	2,818	100%	100%	56%	2
Newly IDPs Total			18	13,990	58%	79%	68%	
Village (Other crisis-affected)	Chin	Matupi	3	1,297	100%	100%	100%	1
	Magway	Gangaw	10	5,427	100%	21%	0%	1
	Sagaing	Chaung-U	10	6,045	100%	58%	0%	1
		Kani	10	10,417	100%	100%	22%	2
		Myaung	10	6,254	100%	48%	0%	1
		Pale	13	10,412	100%	78%	18%	2
		Yinmarbin	10	8,484	100%	100%	1%	2
Village (Other crisis-affected people) Total			66	48,336	100%	74%	11%	
Grand Total			85	63,612	91%	76%	24%	

Comparison with updated displacement figures

State/Region	UNHCR Current IDPs (as of 22th July 2024)	# of WASH Responded Agency	# Covered Site/village	# of people WASH covered	% of coverage
Chin	85,600	1	3	1,297	2%
Sagaing	1,236,200	4	18	5,921	0%
Magway	251,100	2	73	64,587	26%
Grand Total	1,572,900	7	94	71,805	5%

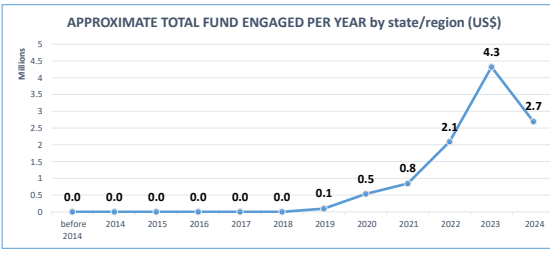
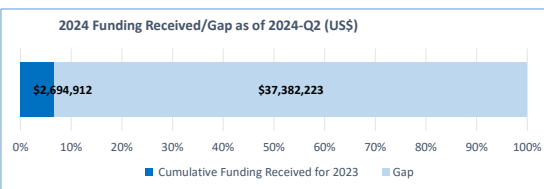
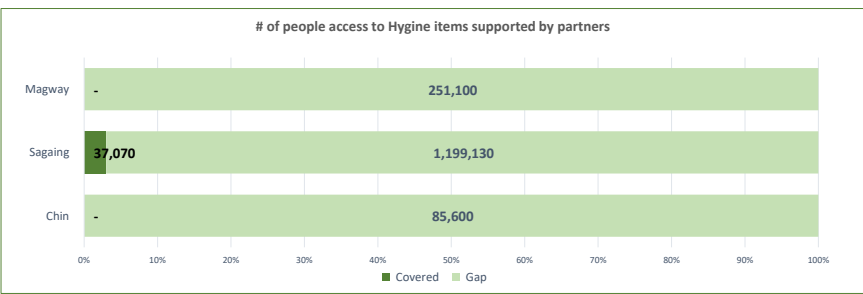
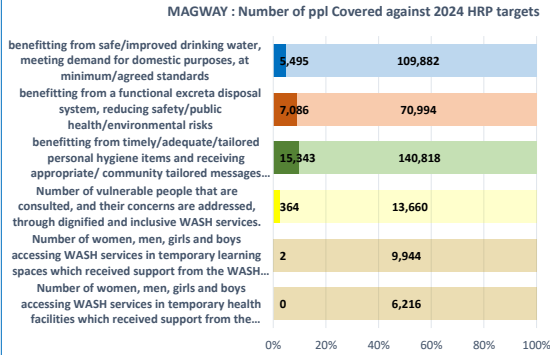
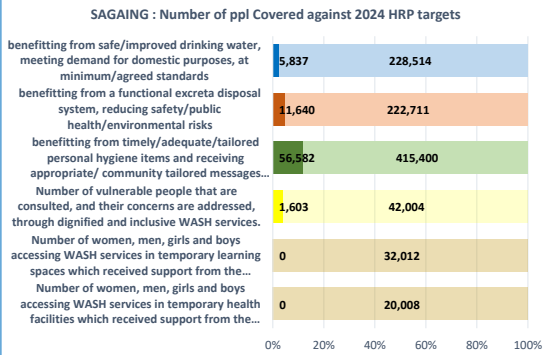
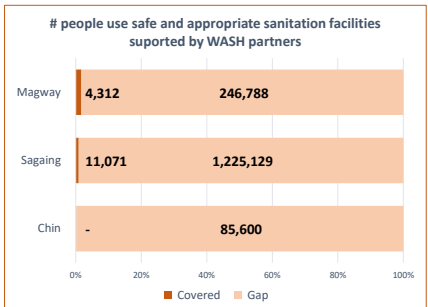
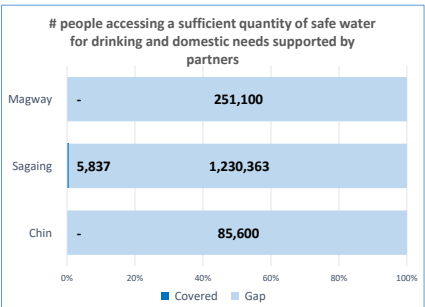
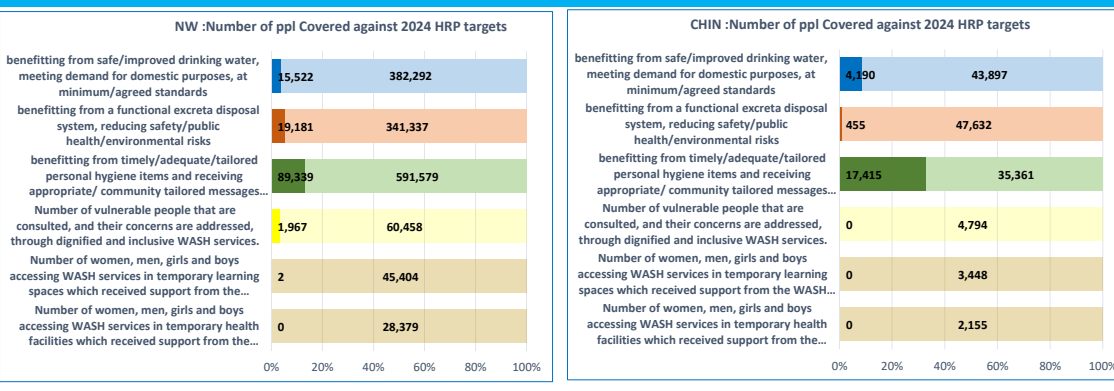
of reporting partners in Q2



Supported by WASH actors in Q2_2024

State/Region	Township	# of Water filter distributed (communal or HH level)	# Jerry Cans/Water Buckets	Menstrual Hygiene Management kits	# Hygiene kits distributed (Full and refill included)	# of People received Menstrual Hygiene Promotion awareness	# of HP sessions	# of People received Hygiene Promotion awareness
Chin	Matupi	-	-	-	-	-	-	-
Chin Total								
Magway	Gangaw	-	-	-	-	-	10	5,427
	Saw	-	-	-	-	-	-	-
Magway Total							10	5,427
Sagaing	Chaung-U	-	-	-	-	-	10	6,045
	Kale	-	-	-	-	-	-	-
	Kani	-	1,427	-	271	4,346	34	2,841
	Myaung	-	-	-	-	-	10	6,254
	Pale	-	-	-	67	692	55	10,100
	Salingyi	-	1,928	-	-	-	-	-
	Shwebo	-	-	-	-	-	-	-
	Tabayin	-	-	-	-	-	-	-
	Tamu	-	-	-	-	-	-	-
	Yinmarbin	-	1,645	-	-	4,242	57	2,033
Sagaing Total			5,000		338	13,685	166	27,273
Grand Total			5,000		338	13,685	176	32,700

Q2 Humanitarian Response Plan achievement



DONORS: BHA, MHF, UNICEF, ECHO, CDCS