

2025-Earthquake Situation Report

3rd April, 2025

(1) Situation and Overview

(1.1) Disaster Information

Disaster	Earthquake Situation of Nay Pyi Taw, Sagaing, Mandalay, Bago East, and Southern Shan
Damage caused	Blocked transport route, Bridge, In fracture, Water Sources, Hospitals
Primary needs	Drinking waters, Basic Foods, First Aid, MHPSS, Health Care and Shelter

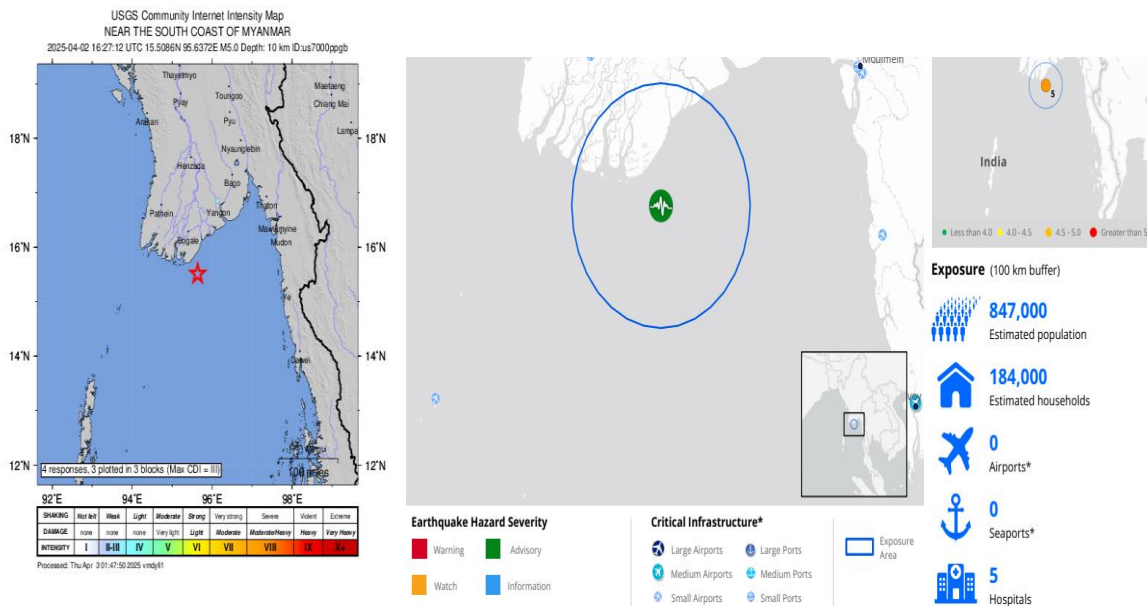
(1.2) Background

(DMH-Issued at 14:15 hrs M.S.T. on 28-3-2025)

On 28 March, at around 12:50 PM local time, a powerful 7.7 magnitude earthquake struck central Myanmar, with its epicenter near Mandalay and Sagaing cities at a shallow depth of 10km. The tremors were felt across the country and beyond. Another 6.4 magnitude earthquake further south followed within minutes. Preliminary reports indicate that upwards of 1,000 people have been killed and over 2,200 others injured, while approximately 200 others are missing in central and northwestern Myanmar. The majority of the deaths were reported in the Mandalay area. The State Administration Council (SAC) has declared a state of emergency for Bago Region, Mandalay Region, Nay Pyi Taw Union Territory, Sagaing Region and parts of Shan State and called for international assistance. The earthquake caused widespread destruction of homes and severe damage to critical infrastructure. Initial reports indicate that Mandalay International Airport (with commercial flights cancelled until further notice), major bridges, roads, universities, hotels, historical and religious sites and public service buildings in urban and rural areas have been heavily damaged or destroyed. Thousands of people are spending the nights on the streets or open spaces due to the damage and destruction to home or fearing further quakes.

On April 2, 2025, at 16:27:12 UTC, a moderate earthquake with a magnitude of 5.0 occurred approximately 86 kilometers south of Pyapon, Burma (Myanmar). The epicenter was located at coordinates 15.509°N latitude and 95.637°E longitude, with a depth of 10.0 kilometers in Sea. (Sources USGS website)

(1.3) Lasted Aftershock Data



(1.4) Emergency Operation Center (EOC)

- The MRCS EOC consistently monitored the daily earthquake situation and promptly shared updates from the Department of Meteorology and Hydrology (DMH) with the Emergency Task Force (ETF), Operations Response Team (ORT), PNSs, UN agencies, and relevant government departments.
- The EOC collected field data, entered it into the Daily Disaster Metadata system after coordination with the State/Region Red Cross Supervisory Committees and Branches, and prepared a Situation Report based on information management and data analysis.
- EOCs in earthquake-affected areas, including Pyay, Ayeyarwady, Bago, Kayin, Mon, and Southern Shan, were fully operational. On-job training was conducted for Red Cross Volunteers (RCVs), who remained on standby for EOC duties and response assignments.
- disseminates real-time weather and earthquake data to ground-level deployment teams. This critical information enables teams to assess the situation, make informed decisions, and prepare effectively based on the evolving conditions.

(2) Disaster Management Department (DM)

- Communicate and Coordinate with Affected Area State Red Cross Supervisory Committee and Branches
- Checks the warehouse stocks in Central (Yangon and Nay Pyi Taw), related Regions/ States and Branches and prepare dispatch plan
- According to the response SOP, the State RCSC will use the State EMF for current response activities (HQ will reimburse the State EMF after WA clearance submission to HQ).
- MRCS-DM team will collaborate and share information with all humanitarian organizations who are ERP working group members.
- MRCS-DM team will coordinate with OCHA and other humanitarian organizations for two types of assessments on the ground: Low-profile and High-profile approaches.
- Collaborate with local government agencies Secondary Data support, assistance to hospital and respond to miscellaneous community needs in affected area.

(3) Primary Affected areas and Population

The beneficiaries need drinking water, Basic food Items, Shelter, Toilet, hygiene materials, First aid, MHPSS, death body bags, and health care services. Public Hospital are not enough for health services. *(RCV Male- 299 and RCV Female -199 total RCV -498)*

(3.1) 3.4.2025 Data

No.	Region/State	Aff HH	Individuals	Deaths	Injuries	Missing	RCV M	RCV F	Remark
1	Mandalay	58,722	261,409	1,105	1,231	201	66	47	
2	Sagaing	1,400	0	472	1,913	217	73	45	
3	Nay Pyi Taw	677	0	1,039	2,016	37	68	40	
4	Bago	1,760	5,180	77	401	0	61	44	
5	Shan (South)	0	0	33	0	0	31	23	

**The data might be increase*

(4) Local Red Cross Volunteers Activities

In the earthquake-impacted regions of Mandalay Region, Sagaing Region, Bago Region, Nay Pyi Taw, and Shan State, local volunteers are collaborating with relevant authorities and Local organizations to conduct relief operations.

The ongoing efforts include: First aid Service, Emergency medical transfers of critically injured patients to hospitals/clinics, MHPSS, RFL, Blood Donation, water and sanitating,

waste management, food and cash distribution management of donations from local donor to affected communities. On April 3, Mandalay and Sagaing Region Red Cross Branches distributed water and provided assistance to patients in hospitals. Sagaing Region Red Cross Branches distributed death body bags to Local CSO. Nay Pyi Taw Red Cross Branch has established a shelter to support the affected community.

(4.1) Deployment Staffs and RCV Activities

- Rapid Needs Assessment
- Water Distribution, WASH (Water, Sanitation, and Hygiene)
- Mobile Health Clinic and Hospital Assistance, Blood Donation
- Deployed Team starts to operate Mobile Clinics in Mandalay Region at 2 identified areas, one in the Morning and one in the Evening.
- FA Posts in the areas where the mobile clinics were not covered
- Restoring Family Link Services
- Mental Health and Psychosocial Support (MHPSS)

No	Area	S/R RCV Team	No of Staff	No of Mobile Clinic	Wash Team
1	Mandalay	Ayeyarwady (10) RCVs Kachin State (20) RCVs	6	2 team	1 team
2	Sagaing	Magway (10) RCVs Local (40) RCVs	6	1 team	1 team
3	Nay Pyi Taw	Mon State (10) RCVs Local (50) RCVs	5		1 team
4	Bago (East)	Kayin State (10) RCVs	5		



(4.2) Support for First Aid Service and WASH Unit Items to Affected Area

No	State and Region	Mobile Clinic	Ambulance	Structure	Water Unit	Trauma First Aid	Advance First Aid	Deployment RCV Kit	ERT	tarpaulin	Shelter Tool Kit	Family Tent	Power supply	Emergency Light	Individual HK
1	Mandalay	2	1	5	1	20	20	29	1	20	8	3	1	4	13
2	Sagaing	1	1		1	20	20	16	1	20	8	3	1	4	13
3	Nay Pyi Taw			5		10	10	15	1	20	8	3		4	13
4	Bago					2	5	15	1	20	8	3		4	13
5	Southern Shan					3	5		1						

(4.3) Coordination at Field

- On April 3rd, 2025, the Red Cross Society of China will hand over to the Regional Government and the Regional Red Cross to support affected area. The items provided will include: Family Kits: 2,000 units, Bedding: 427 units, Bedding: 173 units, Towels: 2,000 units, Tents: 300 units.
- ICRC Provided emergency latrines, kitchen equipment, solar lamps, and charging ports to Deployment RCVs.

(5) Challenges and Basic Need Items

(5.1) Challenges

- Telecommunications and internet disruptions continue to hinder humanitarian communications and operations.
- Damaged roads and debris are obstructing humanitarian access and complicating needs assessments.
- Hospitals and health facilities have sustained extensive damaged
- One EOC are Damage and Communication Cutout
- Evacuated community are stay in open spaces (not enough shading areas and drinking water, domestic water)
- Shading place not enough under high temperature for evacuated families
- Out of electricity in Mandalay, Sagaing and Naypyitaw
- Market prices increase of basic food, water and fuel
- Staffing Issues: Need for additional logistics and finance personnel.

(5.2) Mostly Requested from the Branches

- ORS, Water Purified, Food
- Tarpaulins, Mosquito Nets, Hygiene Materials, Shelter, RCVs Safety Mantrials
- Health Care Services, First Aid Kits, MHPSS
- Solor panel for light and communication
- Death Body Bags

(5.2) Urgent Needs

- More shelter materials to meet growing demand.
- Enhanced security in displacement sites.
- Water distribution and WASH activities.
- Water Trucks and transport Trucks

For more information regarding this operation, please contact:

- Deputy Secretary General: Dr Nyo Nyo Wint, nyonyowint@redcross.org.mm
- Director of Disaster Management: Moe Thida Win, moethidawin@redcross.org.mm

Please show detail data in attachment of Earthquake Data 2025 file.